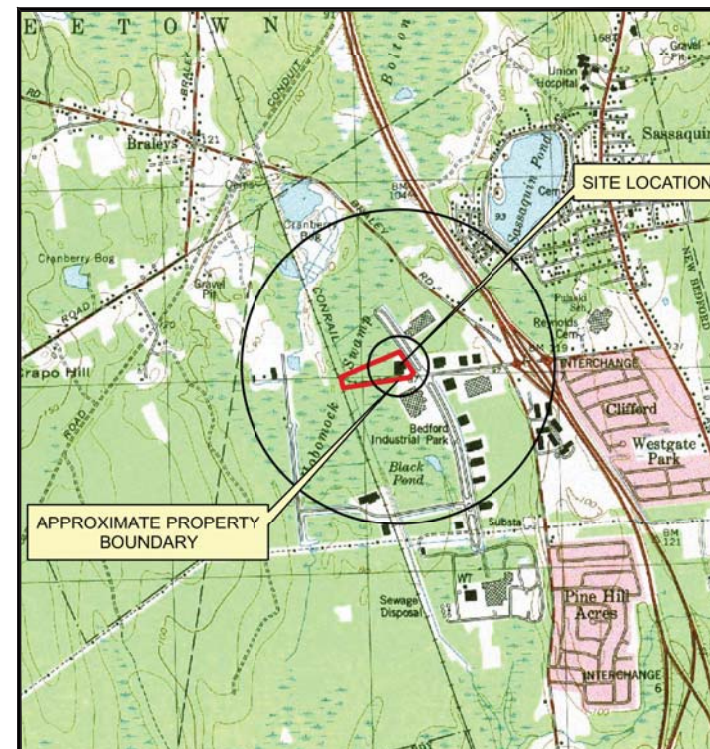


**241 DUCHAINE BOULEVARD
NEW BEDFORD, MASSACHUSETTS**

**DEPARTMENT OF
ENVIRONMENTAL STEWARDSHIP**

SHEET	DRAWINGS
1	COVER SHEET
2	GENERAL NOTES, AND DETAILS
3	EXISTING CONDITIONS PLAN
4	DEMOLITION PLAN
5	BUILDING MATERIALS SAMPLING PLAN AND BUILDING MATERIALS MANAGEMENT PLAN
6	PHOTO LOCATIONS PLAN



NO SCALE

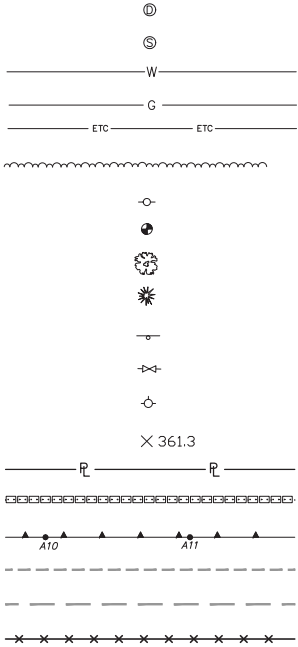
Tighe & Bond
www.tighebond.com

COMPLETE SET 6 SHEETS

Tighe & Bond, Inc. J:\N\N1011 New Bedford\CAD\Demo Project\Legend.dwg Jun 27, 2016-1:09pm Plotted By: tmp

LEGEND

- EXISTING DRAIN MANHOLE
- EXISTING SANITARY OR COMBINED MANHOLE
- EXISTING PUBLIC WATER LINE
- EXISTING GAS LINE
- EXISTING ELECTRICAL/TELEPHONE/COMM LINE
- EDGE OF WOODED AREA
- UTILITY POLE
- MONITORING WELL
- DECIDUOUS TREE
- CONIFEROUS TREE
- STREET SIGN
- WATER GATE
- HYDRANT
- SPOT ELEVATION
- PROPERTY LINE
- SEDIMENT AND EROSION CONTROL
- WETLAND DELINEATION AND FLAGGING
- 25 FOOT BUFFER ZONE (WWPO)
- 100 FOOT BUFFER ZONE (MAWPA)
- PROPOSED CHAIN LINK FENCE



ABBREVIATIONS

- CATCH BASIN
- CONCRETE
- CONCRETE CURB
- CONCRETE WALK
- DEBRIS
- DIRT PILE
- DRAIN MANHOLE
- EDGE OF PAVEMENT
- HYDRANT
- INVERT
- MANHOLE
- PROPERTY LINE
- PROPOSED
- REINFORCED CONCRETE PIPE
- SANITARY MANHOLE
- STORM DRAIN
- STRUCTURE
- UTILITY POLE
- WATER GATE
- CB
- CONC
- CC
- CW
- DB
- DP
- DMH
- EOP
- HYD
- INV
- MH
- RL
- PROP
- RCP
- SMH
- SD
- STRUCT
- U.P.
- WG

GENERAL NOTES

- NOTIFY "DIGSAFE" AT 1-888-344-7233 TO ARRANGE FOR MARKING OUT EXISTING UNDERGROUND UTILITIES AT LEAST 72 HOURS IN ADVANCE OF MAKING EXCAVATIONS AT ANY GIVEN LOCATION. UNDER NO CIRCUMSTANCES SHALL THE CONTRACTOR BE ALLOWED TO START ANY KIND OF EXCAVATION WORK PRIOR TO HIS OBTAINING ALL NECESSARY INFORMATION REGARDING THE LOCATION OF UNDERGROUND UTILITIES AT THE SITE.
- TOPOGRAPHY AND EXISTING UTILITY LOCATIONS AND ELEVATIONS ARE BASED ON SURVEY PROVIDED BY THE CITY OF NEW BEDFORD AND THOMPSON FARLAND. DATED JULY 22, 2014
- NOTIFY THE OWNER AND THE ENGINEER OF ANY STORM, SANITARY OR OTHER UTILITY DISCOVERED DURING CONSTRUCTION THAT IS NOT SHOWN ON THE DRAWINGS.
- IMMEDIATELY REPORT SPILLS OF OIL AND/OR HAZARDOUS MATERIALS (OHM) TO THE MA DEPARTMENT OF ENVIRONMENTAL PROTECTION.
- PROPERTY LINE INFORMATION AS SHOWN ON THE PLANS WAS COPIED FROM AVAILABLE ASSESSOR MAP INFORMATION AND IS SHOWN FOR REFERENCE PURPOSES ONLY.
- VERTICAL DATUM = ASSUMED DATUM (FEET)
HORIZONTAL DATUM = ASSUMED DATUM (FEET)
- WETLAND FLAGS BASED ON PLANS PREPARED BY TIGHE & BOND, INC. FOR THE CITY OF NEW BEDFORD
- NO MATERIALS OR EQUIPMENT SHALL BE STORED ON-SITE WITHOUT PRIOR APPROVAL OF CITY OF NEW BEDFORD. CONTRACTOR SHALL COORDINATE ACTIVITIES ACCORDINGLY.

ENVIRONMENTAL REQUIREMENTS:

- PORTIONS OF THE WORK AREA ARE LOCATED WITHIN OR IN CLOSE PROXIMITY TO DESIGNATED INLAND WETLANDS AND/OR WATERWAYS. THE LIMITS OF THESE WETLANDS ARE SHOWN ON THE CONTRACT DRAWINGS. CONDUCT ALL WORK IN THESE AREAS ACCORDING TO THE REQUIREMENTS NOTED ON THE CONTRACT DRAWINGS, CALLED FOR IN THE PROJECT MANUAL, AND IN STRICT COMPLIANCE WITH PERMITS OBTAINED FOR THIS CONTRACT.
- PROVIDE DUST CONTROL USING WATER FOR ALL RAW SLOPES, ALL EARTH STOCKPILES, ANY EARTH PILED ALONG EXCAVATIONS, AND SURFACES OR REFILLED TRENCHES. IN NO CASE SHALL EXCAVATED MATERIAL BE STOCKPILED AT SUCH LOCATIONS WHERE THE MATERIAL CAN RUNOFF INTO WETLAND AREAS, WATERWAYS OR ADJACENT PROPERTIES.
- CLEAN ALL ROADWAY AND ADJOINING AREAS AFFECTED BY THE PROPOSED WORK TO AVOID SEDIMENT BUILD-UP.

ASBESTOS ABATEMENT NOTES:

- REFER TO SPECIFICATION SECTION 13281 AND ABATEMENT SCHEDULE FOR COMPLETE DETAILS AND QUANTITIES TO BE REMOVED.

OIL/HAZARDOUS MATERIAL NOTES:

- REFER TO SPECIFICATION SECTION 13283 FOR GENERAL IDENTIFICATION AND APPROXIMATE QUANTITIES OF HAZARDOUS MATERIALS TO BE REMOVED.

DEMOLITION NOTES:

- ALL ABOVE-FLOOR GRADE STRUCTURES ASSOCIATED WITH THE BUILDING WITHIN THE LIMIT OF WORK SHALL BE DEMOLISHED AND DISPOSED OF OR RECYCLED UNLESS OTHERWISE NOTED.
- ALL BUILDING FOUNDATION COMPONENTS AND RELATED ELEMENTS SHALL REMAIN COMPLETELY, INCLUDING COLUMN FOOTINGS, FROST WALLS, SUB-SLAB PITS, TRENCHES UNLESS OTHERWISE NOTED.
- REFER TO CONTRACT SPECIFICATIONS FOR ASBESTOS AND OIL/HAZARDOUS MATERIAL ABATEMENT REQUIREMENTS.
- REMOVE ALL MISCELLANEOUS SITE DEBRIS LOCATED WITHIN THE BUILDING.
- ALL EROSION CONTROL MEASURES SHOWN, SPECIFIED, AND REQUIRED BY THE ENGINEER WILL BE INSTALLED PRIOR TO ANY CONSTRUCTION/DEMOLITION WORK BY THE CITY OF NEW BEDFORD. THE CONTRACTOR SHALL MAINTAIN ALL SUCH CONTROL MEASURES UNTIL CONTRACTOR DEMOLITION WORK IS COMPLETED.

UTILITY DEMOLITION NOTES:

- UNLESS OTHERWISE NOTED, TERMINATE, CUT AND CAP ALL UNDERGROUND UTILITIES SERVING THE BUILDING (LOCATE VIA TEST PIT, IF NECESSARY).
- UNLESS OTHERWISE NOTED, INSTALL CONCRETE PLUGS IN GRAVITY LINES OUTSIDE THE FOUNDATION OF THE BUILDING.
- CITY OF NEW BEDFORD WILL TERMINATE ALL WATER SERVICES TO THE BUILDING TO BE DEMOLISHED.
- TERMINATE ALL SEWER AND DRAIN CONNECTIONS IN ACCORDANCE WITH CITY OF NEW BEDFORD REQUIREMENTS.

City of
New Bedford

Former Polymerine
Site Demolition
Project
241 Duchaine
Boulevard

New Bedford,
Massachusetts

VERIFY SCALE

BAR IS 1 INCH ON ORIGINAL DRAWING

0 1 INCH

IF NOT ONE INCH ON THIS SHEET, ADJUST SCALES ACCORDINGLY

Mark	Date	Description
PROJECT NO:		N1011
FILE:		Legend.dwg
DRAWN BY:		TMP
CHECKED:		TDK
APPROVED BY:		TMB
GENERAL NOTES AND LEGEND		
SCALE:		NONE
SHEET 2 OF 6		

Former Polymerine
Site Demolition
Project
241 Duchaine
Boulevard

New Bedford,
Massachusetts

VERIFY SCALE

BAR IS 1 INCH ON
ORIGINAL DRAWING

0 1 INCH

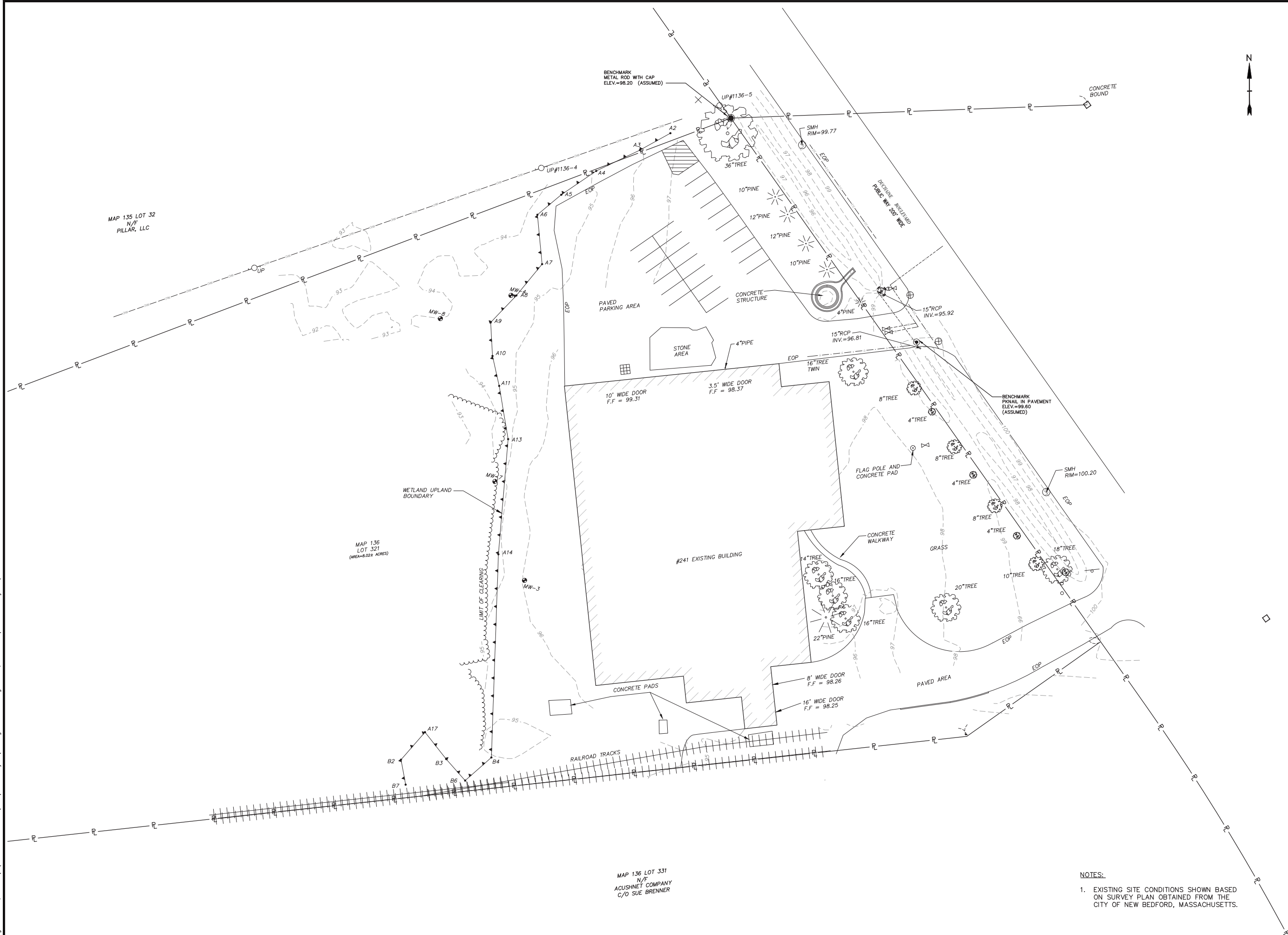
THIS SHEET, ADJUST

Mark	Date	Description
PROJECT NO:		N1011
FILE:		Existing Conditions.dwg
DRAWN BY:		TMP
CHECKED:		TDK
APPROVED BY:		TMR

EXISTING CONDITIONS PLAN

SCALE: 1"=30'

SHEET 3 OF 6



NOTES:

1. EXISTING SITE CONDITIONS SHOWN BASED ON SURVEY PLAN OBTAINED FROM THE CITY OF NEW BEDFORD, MASSACHUSETTS.

Former Polymerine
Site Demolition
Project
241 Duchaine
Boulevard

**New Bedford,
Massachusetts**

VERIFY SCALE

BAR IS 1 INCH ON
ORIGINAL DRAWING

0 1 INCH

IF NOT ONE INCH ON

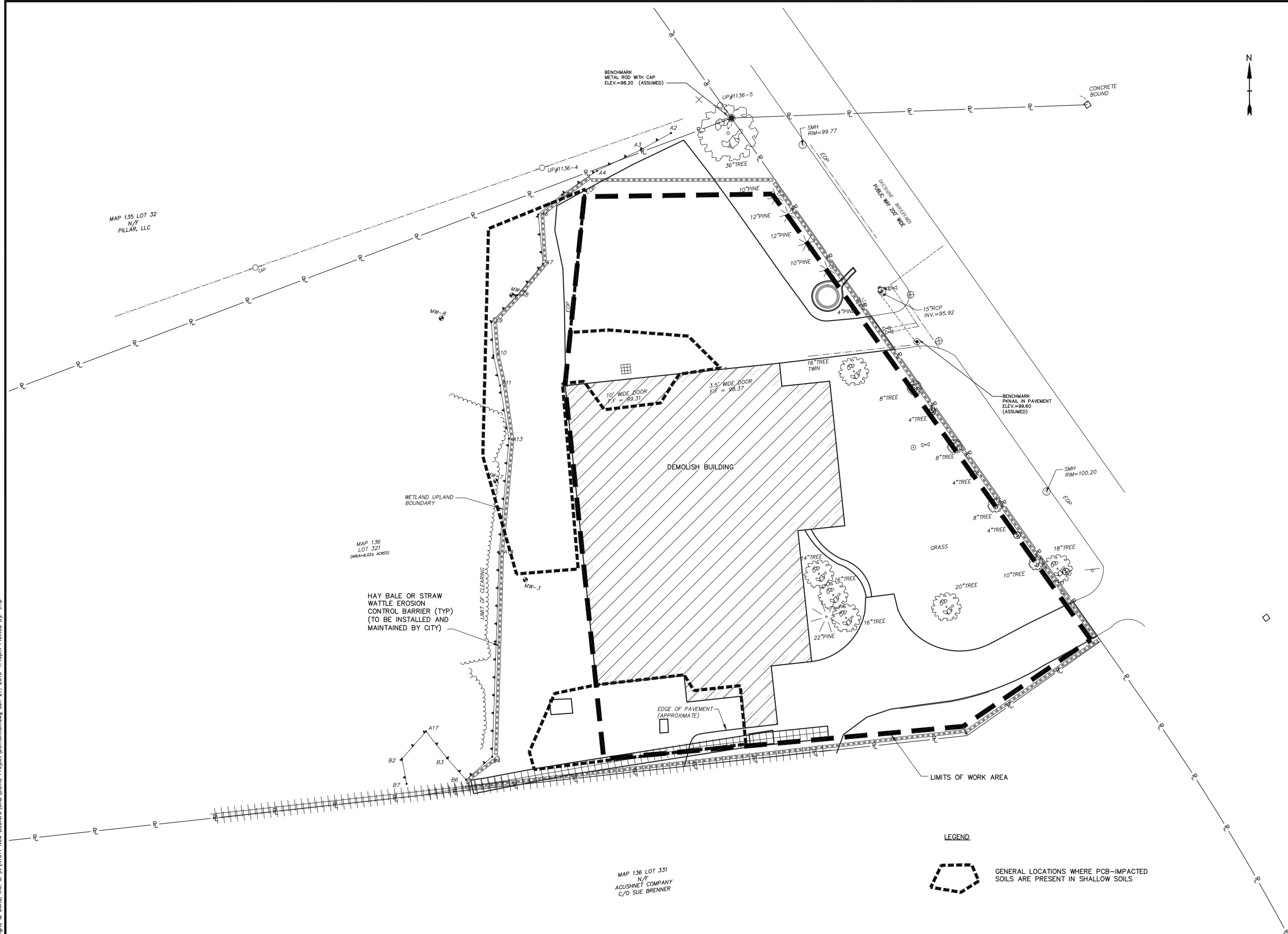
THIS SHEET, ADJUST
SCALES ACCORDINGLY

Mark	Date	Description
PROJECT NO:		N1011
FILE:		Demolition.dwg
DRAWN BY:		TMP
CHECKED:		TDK
APPROVED BY:		TMB

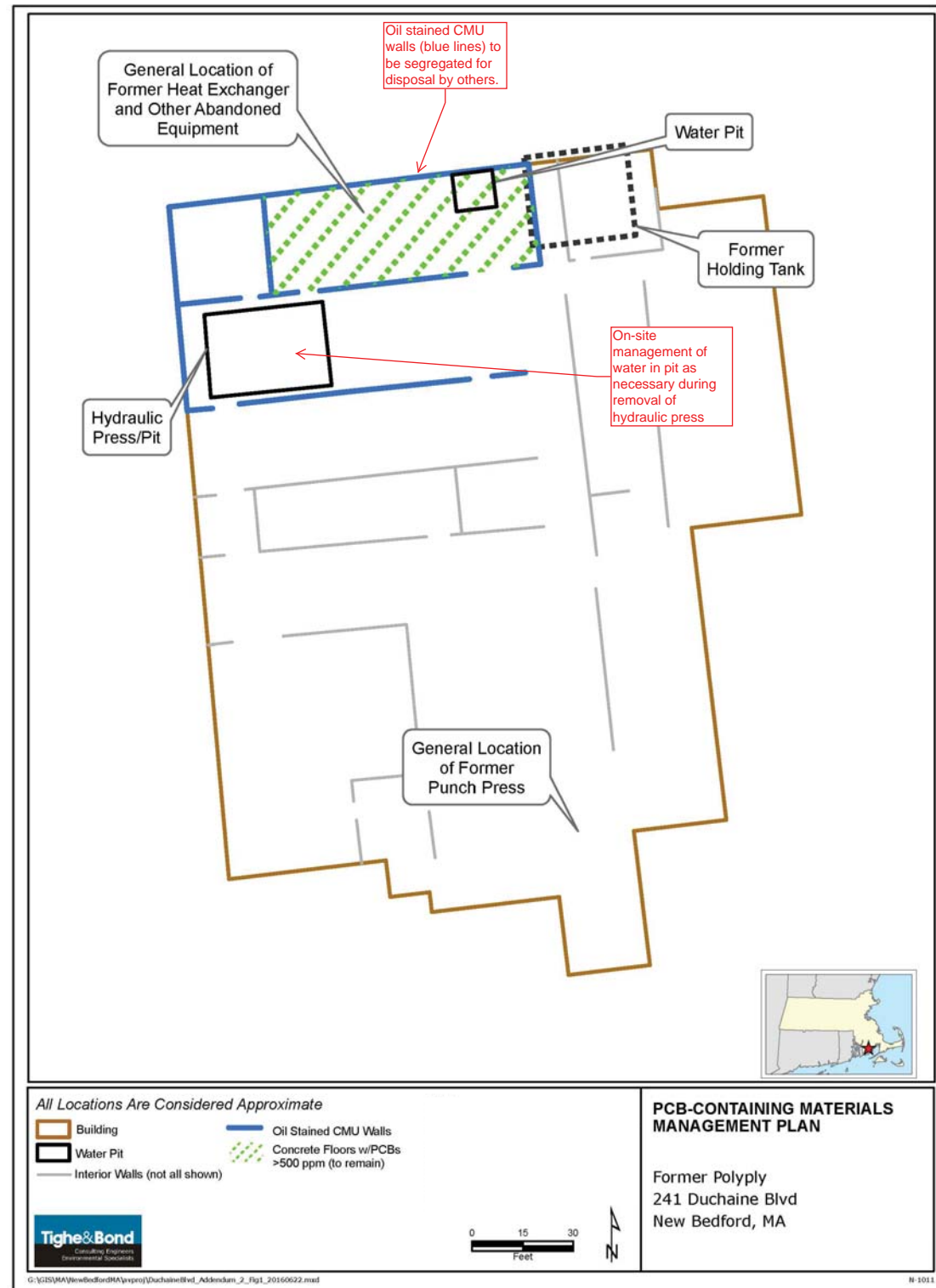
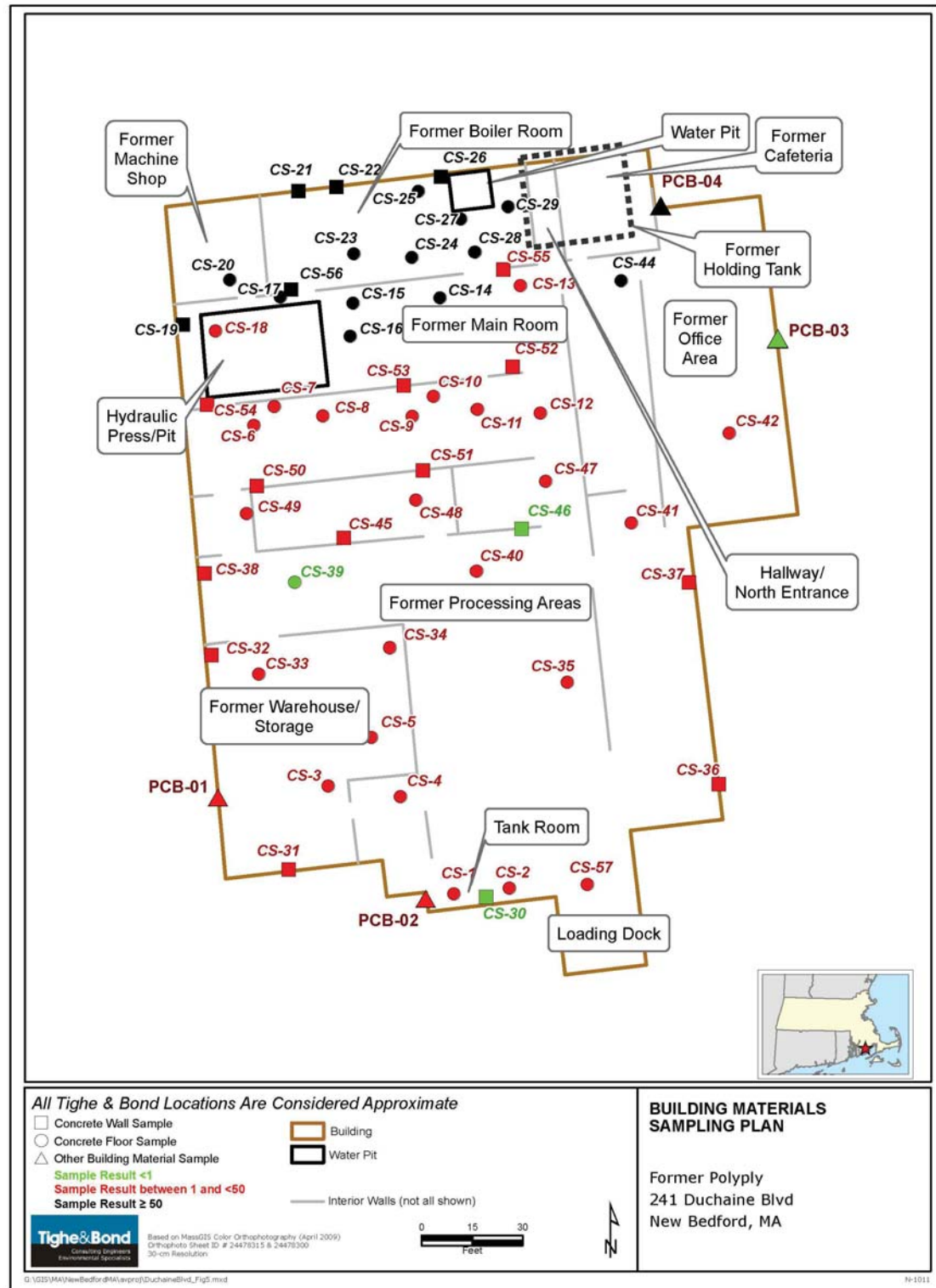
DEMOLITION PLAN

SCALE: 1"=30'

SHEET 4 OF 6



Tighe & Bond, Inc. J:\N1011 New Bedford\New Bedford\Building Materials.dwg Jun 27, 2016 - 1:10pm Plotted By: tmp



**City of
New Bedford**

Former Polymerine
Site Demolition
Project
241 Duchaine
Boulevard

New Bedford,
Massachusetts

VERIFY SCALE
BAR IS 1 INCH ON
ORIGINAL DRAWING
0 1 INCH
IF NOT ONE INCH ON
THIS SHEET, ADJUST
SCALES ACCORDINGLY

Mark	Date	Description

PROJECT NO: N1011
FILE: Building Materials.dwg
DRAWN BY: TMP
CHECKED: TDK
APPROVED BY: TMB

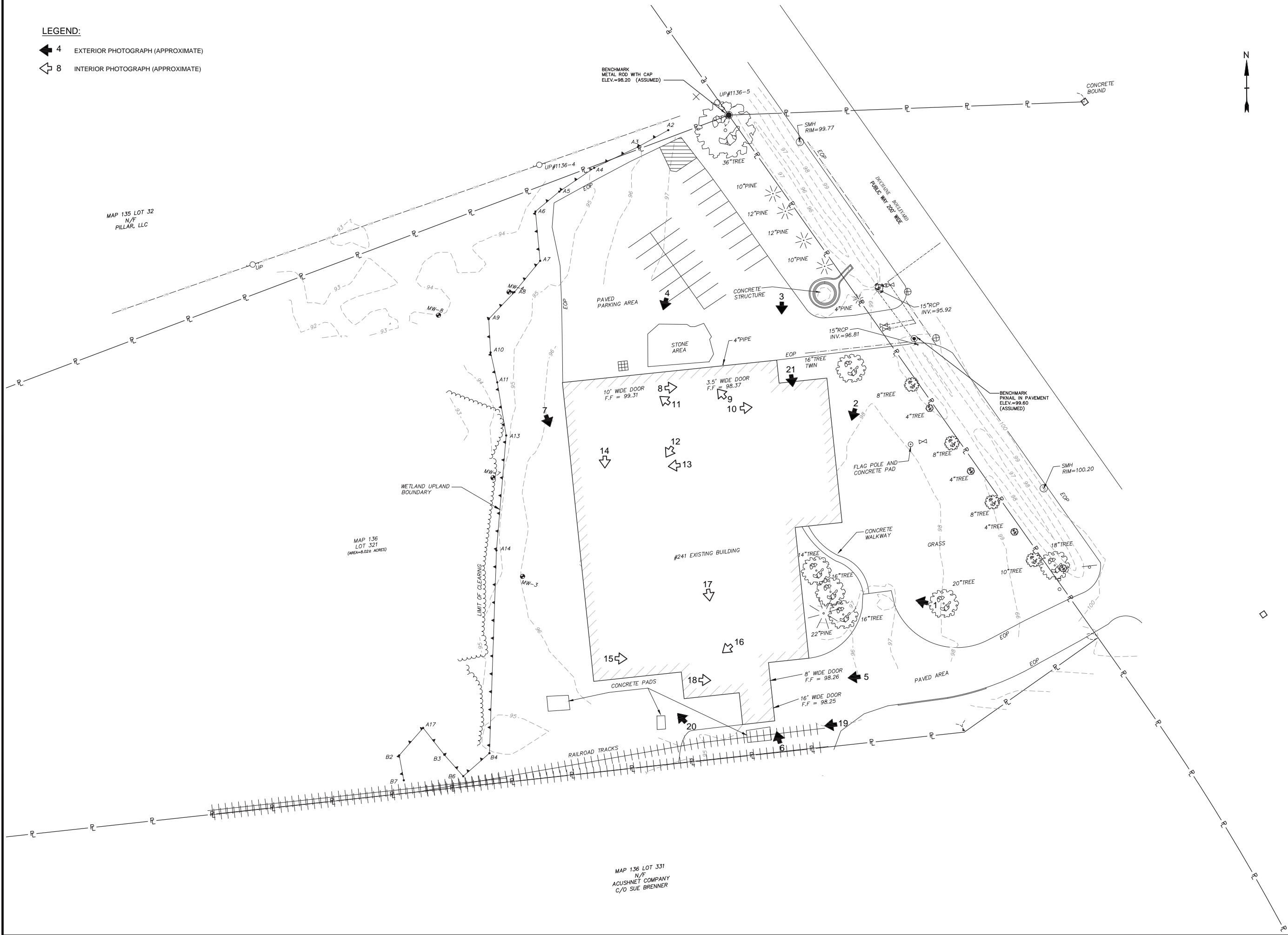
BUILDING MATERIALS SAMPLING
PLAN AND BUILDING MATERIALS
MANAGEMENT PLAN

SCALE: NONE

Tighe & Bond, Inc. d:\N\N1011 New Bedford\CAD\Demo Project\Photo Locations.dwg, Jun 27, 2016-1:11pm Plotted By: tmp

LEGEND:

- 4 EXTERIOR PHOTOGRAPH (APPROXIMATE)
8 INTERIOR PHOTOGRAPH (APPROXIMATE)



**City of
New Bedford**

**Former Polymerine
Site Demolition
Project
241 Duchaine
Boulevard**

**New Bedford,
Massachusetts**

VERIFY SCALE

BAR IS 1 INCH ON
ORIGINAL DRAWING
0 1 INCH
IF NOT ONE INCH ON
THIS SHEET, ADJUST
SCALES ACCORDINGLY

Mark	Date	Description
PROJECT NO: N1011		
FILE: Photo Locations.dwg		
DRAWN BY: TMP		
CHECKED: TDK		
APPROVED BY: TMB		

PHOTO LOCATIONS PLAN

SCALE: 1"=30'