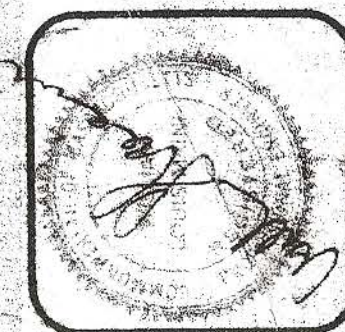
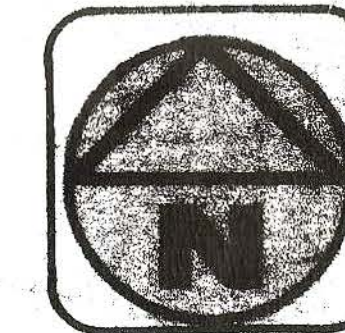
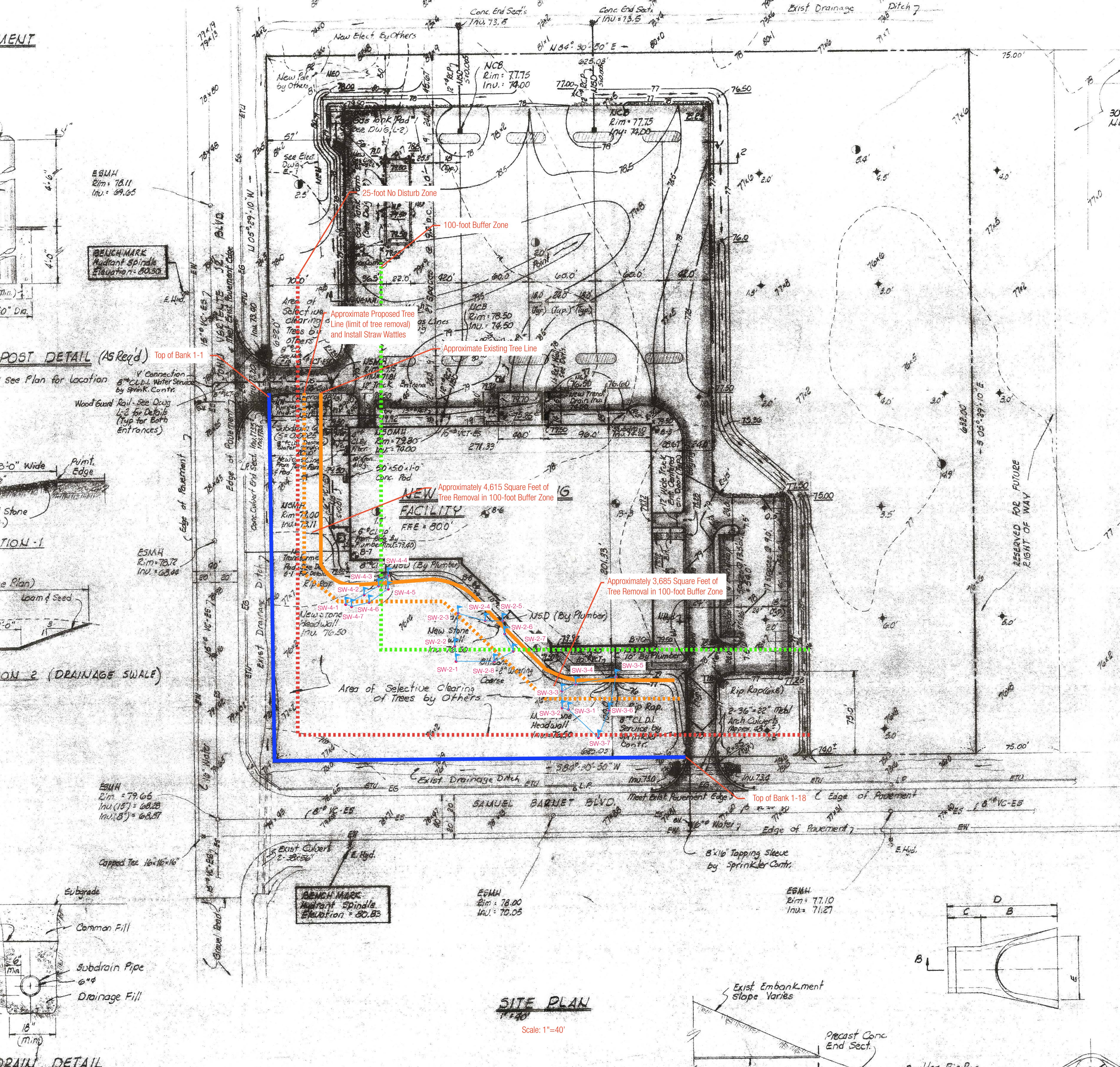


[illegible][illegible]

MANUFACTURING FACILITY FOR
ISOTRONICS, INC.
NEW BEDFORD, MASSACHUSETTS
SYMMES MAINI & MCKEE INC.
ARCHITECTS ENGINEERS
1050 MASSACHUSETTS AVENUE CAMBRIDGE, MASSACHUSETTS



| | |
|-------|--------------|
| TAILS | JOB NO. 7779 |
|-------|--------------|



C.I. - CAST IRON
VCT-ES - VITRIFIED CLAY TILE - EXTRA STRENGTH
RCP - REINFORCED CONCRETE PIPE
→ INDICATES DIRECTION OF FLOW

64. APPROXIMATE LOCATION OF 6-INCH DIA. HOLLOW STEEL DRIVE SAMPLE AUGER BORING BY C. WELT, INC. DURING THE PERIOD JAN. 1978 AND MARCH 1978.

15. APPROXIMATE LOCATION AND DEPTH IN FEET OF SOFT COMPRESSIBLE ORGANIC SOILS DETERMINED BY HAND PROBINGS BY HALEY & ALDRICH, INC., JAN. 1978.

55. APPROXIMATE LOCATION AND DEPTH IN FEET OF HAND PROBES BY AMERICAN DRILLING CO., INC. APRIL 1964.

- GENERAL NOTES
1. Boundary line and easement information taken from plan entitled "Option Plan of Land in New Bedford, MA, New Bedford Industrial Foundation", dated June 20, 1977, by Tibbetts Engineering Corp., New Bedford, MA.
 2. Topographical Contour information taken from plan entitled, "Topographic Plan for Proposed Building Site West of the Industrial Park, New Bedford Industrial Development Commission", dated May 26, 1964 by Tibbetts Engineering Corp., New Bedford, MA.
 3. Spot grades along existing ditches and streets taken from plan entitled, "As Built", New Bedford, MA, dated March 9, 1978 by Pilling Engineering Co., Inc., Consulting Engineers, 26 Norfolk Street, Dedham, MA.
 4. Any discrepancies found in existing site conditions or utilities, notify Architect immediately.
 5. See Mechanical, Plumbing and Electrical drawings for further utilities information.
 6. Bench mark: As indicated on plan.
 7. For boring logs, see Dwg. L-2.
 8. Notify N.B.G. & Electric Company, New Bedford, MA, 48 hours prior to any construction on or near their utilities.
 9. Existing drainage ditch to be reconstructed to meet new metal arch culverts.
 10. All fees and permits to be paid for by the Contractor.
 11. Loan and seed all areas outside building and pavement which are to be regraded or otherwise disturbed by work under this contract.
 12. Protect trees in areas designated to be selectively cleared by others and other trees designated by the Architect to remain.
13. 8th C.I.P. 30 ft. Long to be Centered on New Arch Culverts on UPERTENE BLVD. (2'-38" x 56")

