



KINGS HIGHWAY
(1969 STATE HIGHWAY LAYOUT)
(PUBLIC WIDTH VARIES)
(NO ACCESS)

"BANK OF AMERICA" ATM

TRAFFIC SIGNAL EASEMENT

PROP. FOOT CANDLE
READING (TYP)

MAP 25, LOT 29
N/F LANDS OF
CEDAR-KINGS LLC
BK. 8820, PG. 194

MAP125, LOT 113
N/F LANDS OF
MICHAEL PANAGAKOS
BK. 5268, PG. 311

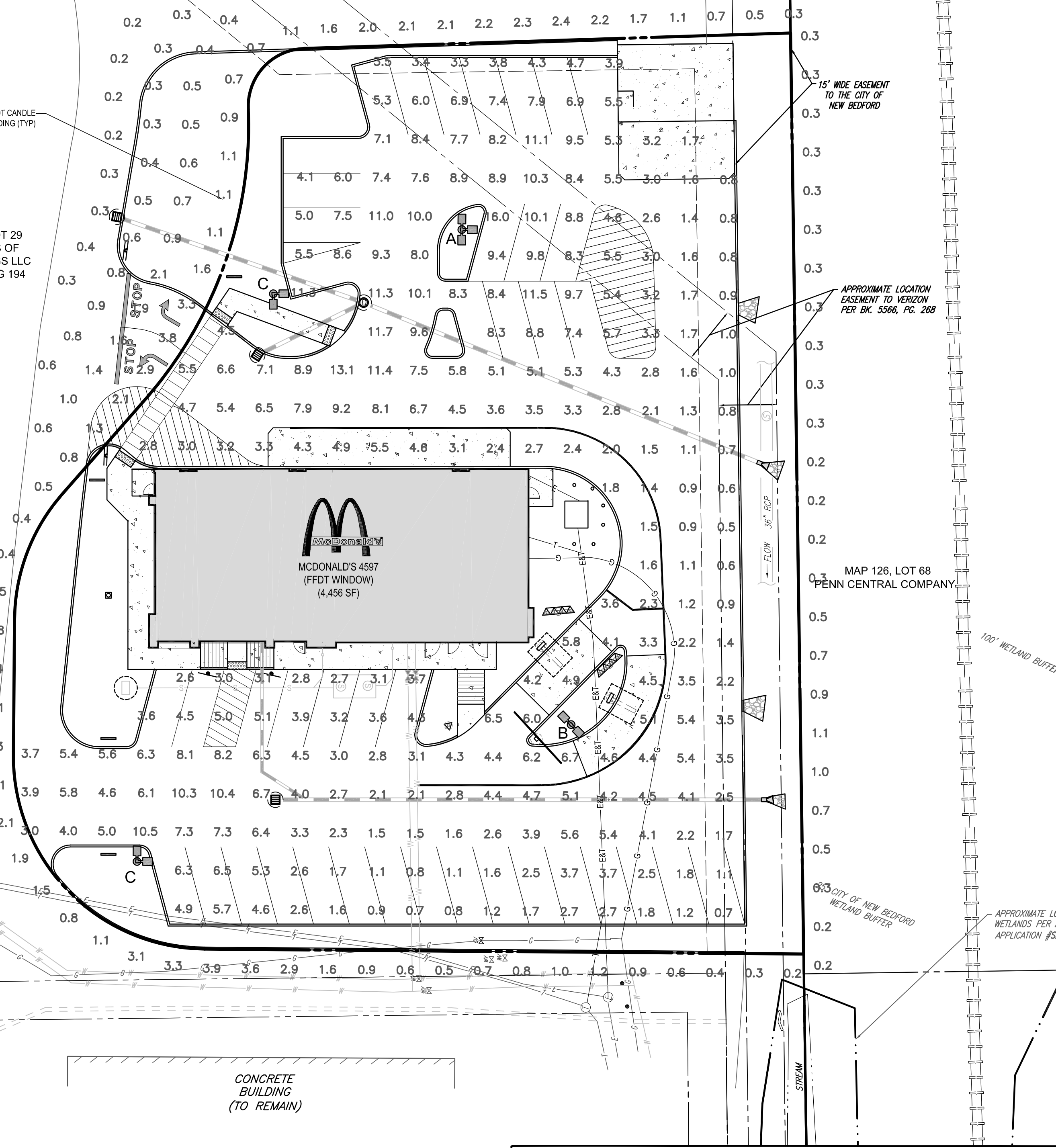
1 STORY
BUILDING
(TO REMAIN)

LOT A

LOT A-1

LOT B-1

CONCRETE
BUILDING
(TO REMAIN)



APPROXIMATE LOCATION OF
10' WIDE ELECTRICAL EASEMENT
PER BK. 1809, PG. 610

MAP 126, LOT 68
PENN CENTRAL COMPANY

100' WETLAND BUFFER

60' CITY OF NEW BEDFORD
WETLAND BUFFER

APPROXIMATE 10
WETLANDS PER A
APPLICATION #35

LIGHTING NOTES:

- THIS LIGHTING PLAN DEPICTS PROPOSED SUSTAINED ILLUMINATION LEVELS CALCULATED USING DATA PROVIDED BY THE NOTED MANUFACTURERS. ACTUAL SUSTAINED SITE ILLUMINATION LEVELS AND PERFORMANCE OF LUMINAIRES MAY VARY DUE TO VARIATIONS IN WEATHER, ELECTRICAL VOLTAGE, TOLERANCE IN LAMPS, THE SERVICE LIFE OF EQUIPMENT AND LUMINAIRES AND OTHER RELATED VARIABLE FIELD CONDITIONS.
- THE LIGHT LOSS FACTORS USED IN THESE LIGHTING CALCULATIONS ARE 0.80 FOR ALL LED LUMINAIRES, 0.80 FOR ALL HIGH PRESSURE SODIUM LUMINAIRES OR 0.72 FOR ALL METAL HALIDE LUMINAIRES UNLESS OTHERWISE SPECIFIED. THESE FACTORS ARE INDICATIVE OF TYPICAL LIGHTING INDUSTRY MODELING STANDARDS.
- THE LIGHTING VALUES AND CALCULATION POINTS DEPICTED ON THIS PLAN ARE ALL ANALYZED ON A HORIZONTAL GEOMETRIC PLANE AT ELEVATION ZERO (GROUND LEVEL) UNLESS OTHERWISE NOTED. THE VALUES DEPICTED ON THIS PLAN ARE IN FOOT-CANDLES.
- THE LUMINAIRES, LAMPS AND LENSES MUST BE REGULARLY INSPECTED/MAINTAINED TO ENSURE THAT THEY FUNCTION PROPERLY. THIS WORK SHOULD INCLUDE, BUT NOT BE LIMITED TO, FREQUENT VISUAL INSPECTIONS, CLEANING OF LENSES, AND REPLACING (IF NECESSARY) AT LEAST ONCE EVERY SIX (6) MONTHS. FAILURE TO FOLLOW THE ABOVE STEPS COULD CAUSE THE LUMINAIRES, LAMPS AND LENSES TO FAIL PROPERLY TO FUNCTION.
- WHERE APPLICABLE, THE EXISTING CONDITION LIGHT LEVELS ILLUSTRATED ARE REPRESENTATIVE OF AN APPROXIMATION UTILIZING LABORATORY DATA FOR SIMILAR FIXTURES. UNLESS ACTUAL FIELD MEASUREMENTS ARE TAKEN WITH A LIGHT METER AND ARE, CONSEQUENTLY, APPROXIMATIONS ONLY. DUE TO FACTORS SUCH AS FIXTURE MAINTENANCE, EQUIPMENT TOLERANCES, WEATHER CONDITIONS, ETC., ACTUAL LIGHT LEVELS MAY DIFFER. EXISTING LIGHT LEVELS DEPICTED ON THIS PLAN SHOULD BE CONSIDERED APPROXIMATE.
- THIS LIGHTING PLAN IS INTENDED TO SHOW THE LOCATIONS AND TYPE OF LUMINAIRES, ONLY. POWER SYSTEM, CONDUITS, WIRING, VOLTAGES AND OTHER ELECTRICAL COMPONENTS ARE THE RESPONSIBILITY OF THE ARCHITECT, MEP AND/OR LIGHTING CONTRACTOR, AS INDICATED IN THE CONSTRUCTION CONTRACT DOCUMENTS. THESE ITEMS MUST BE INSTALLED AS REQUIRED BY STATE AND LOCAL REGULATIONS. LIGHT POLE BASES ARE THE RESPONSIBILITY OF THE STRUCTURAL ENGINEER, AS INDICATED IN THE CONSTRUCTION CONTRACT DOCUMENTS. CONTRACTOR IS RESPONSIBLE FOR INSTALLING LIGHTING FIXTURES AND APPURTENANCES IN ACCORDANCE WITH ALL APPLICABLE BUILDING AND ELECTRICAL CODES AND ALL OTHER APPLICABLE RULES, REGULATIONS, LAWS AND STATUTES.
- CONTRACTOR MUST BRING TO DESIGNER'S ATTENTION, PRIOR TO THE COMMENCEMENT OF CONSTRUCTION, ANY LIGHT LOCATIONS THAT CONFLICT WITH DRAINAGE, UTILITIES, OR OTHER STRUCTURES.
- IT IS LIGHTING CONTRACTOR'S RESPONSIBILITY TO COORDINATE WITH THE PROJECT ARCHITECT OR OWNER REGARDING THE POWER SOURCE(S) FROM WITHIN THE BUILDING, AND TIMING DEVICES NECESSARY TO MEET THE DESIGN INTENT.
- THE LIGHTING CONTRACTOR SHALL COMPLY WITH ALL APPLICABLE CONTRACTOR REQUIREMENTS INDICATED IN THE SITE PLAN, INCLUDING BUT NOT LIMITED TO, GENERAL NOTES, GRADING AND UTILITY NOTES, SITE SAFETY, AND ALL GOVERNMENTAL RULES, LAWS, ORDINANCES, REGULATIONS AND THE LIKE.
- THE CONTRACTOR MUST VERIFY THAT INSTALLATION OF LIGHTING FIXTURES COMPLIES WITH THE REQUIREMENTS FOR SEPARATION FROM OVERHEAD ELECTRICAL WIRES PER STATE REGULATIONS.
- WHEN A BANK/ATM IS INCLUDED IN THE PLAN, THE LIGHTING DESIGN REPRESENTS BOHLER'S UNDERSTANDING AND INTERPRETATION OF THE REGULATORY LIGHTING LEVELS INTENDED BY PUBLISHED STANDARDS.
- UPON OWNER'S ACCEPTANCE OF THE COMPLETED PROJECT, THE OWNER SHALL BE RESPONSIBLE FOR ALL MAINTENANCE, SERVICING, REPAIR AND INSPECTION OF THE LIGHTING SYSTEM AND ALL OF ITS COMPONENTS AND RELATED SYSTEMS, TO ENSURE ADEQUATE LIGHTING LEVELS ARE PRESENT AND FUNCTIONING AT ALL TIMES.
- LIGHTING LEVELS INDICATED ON THIS PLAN ARE TAKEN FROM PLAN PREPARED BY SECURITY LIGHTING SYSTEMS, ENTITLED "POINT-BY-POINT FOOTCANDLE PLOT", DRAWING NUMBER 1PCP30275A AND DATED 07/07/15.

NUMERIC SUMMARY

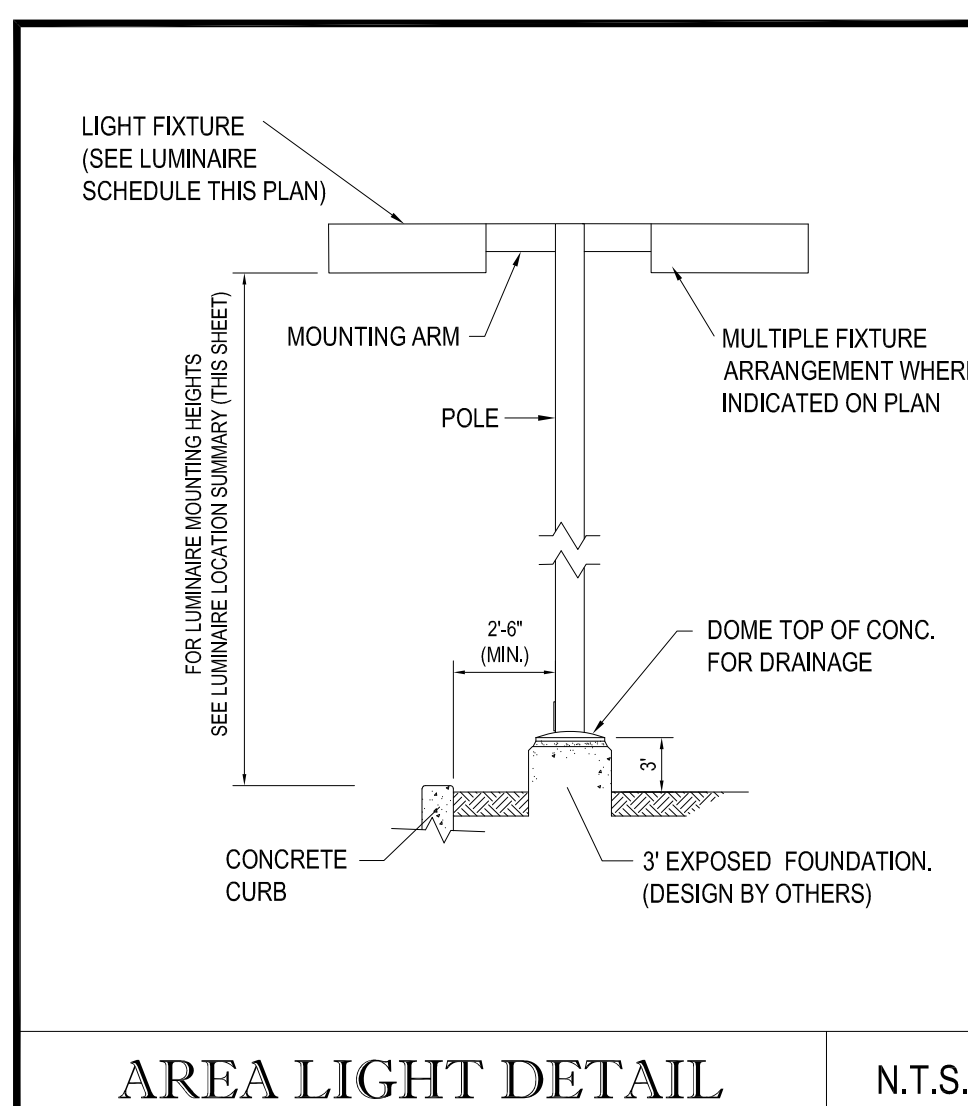
LABEL	CALC TYPE	UNITS	AVG	MAX	MIN	AVG/MIN	MAX/MIN
PAVED SURFACE READINGS	ILLUMINANCE	FC	4.7	16.0	0.5	9.31	32.00
PROPERTY LINE READINGS	ILLUMINANCE	FC	1.2	3.9	0.2	5.86	19.50

LUMINAIRE SCHEDULE

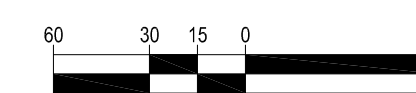
SYMBOL	QTY	ARRANGEMENT	LUMENS	LLF	DESCRIPTION
A	1	SINGLE	24,700	0.87	280-WATT VIPER - LARGE (LED) VPL-96NB-280-5k-T4-UNV-RA-**- SSP-4116-GL-**-TT (41) POLE TYPE", MOUNTING HEIGHT 21'
B	1	DOUBLE @ 180	24,700	0.87	280-WATT VIPER - LARGE (LED) VPL-96NB-280-5k-T4-UNV-RA-**- SSP-4116-GL-**-TT (41) POLE TYPE", MOUNTING HEIGHT 21'
C	2	DOUBLE @ 90	24,700	0.87	280-WATT VIPER - LARGE (LED) VPL-96NB-280-5k-T4-UNV-RA-**- SSP-4116-GL-**-TT (41) POLE TYPE", MOUNTING HEIGHT 21'

* POLES SPECIFIED ON THIS DRAWING ARE RATED FOR AN 120 MPH WIND LOAD. FOR AREAS WHERE THE WIND LOAD CRITERIA EXCEEDS 120 MPH, PLEASE CONSULT FACTORY FOR PROPER POLE SPECIFICATION AND MODEL NUMBER.

** SPECIFY COLOR



THIS PLAN TO BE UTILIZED FOR
LIGHTING PURPOSES ONLY



**BOHLER
ENGINEERING**

352 TURNPIKE ROAD
SOUTHBOROUGH, MA 01772
Phone: (508) 480-9900
Fax: (508) 480-9080
www.BohlerEngineering.com

CIVIL & CONSULTING ENGINEERS
SURVEYORS
PROJECT MANAGERS
ENVIRONMENTAL CONSULTANTS
LANDSCAPE ARCHITECTS

OFFICES:
WARREN, NJ
UPSTATE NEW YORK
BOSTON, MA
NEW YORK METRO
PHILADELPHIA/SOUTHERN NJ
LEHIGH VALLEY, PA
SOUTHEASTERN PA
BALTIMORE, MD
SOUTHERN MARYLAND
NORTHERN VIRGINIA
WASHINGTON, DC
CENTRAL VIRGINIA
CHARLOTTE, NC
RALEIGH, NC

THE INFORMATION, DESIGN AND CONTENT OF THIS PLAN ARE THE PROPERTY OF BOHLER ENGINEERING. ONLY APPROVED, SIGNED AND SEALED PLANS SHALL BE UTILIZED FOR CONSTRUCTION PURPOSES. © 2008 BOHLER ENGINEERING.

CONSTRUCTION CHECK	DATE
CONSTRUCTION CHECK	DATE
PROJECT No.: W142005	
CAD I.D. #: W142005ss0.dwg	

STREET ADDRESS 1080 KINGS HIGHWAY	
CITY NEW BEDFORD	STATE MASSACHUSETTS
COUNTY PROVIDENCE COUNTY	
SITE ID # 020-0128	PLAN DESCRIPTION LIGHTING PLAN

STATUS	DATE	BY
DRAWN BY:	8/12/15	EGD
PLAN CHECKED		JAK
AS-BUILT		
SHEET NO.	C-12	

J.A. KUCICH
PROFESSIONAL ENGINEER
MASSACHUSETTS LICENSE NO. 41030
CONNECTICUT LICENSE NO. 24577
RHODE ISLAND LICENSE NO. 9618
MAINE LICENSE NO. 12553

McDonald's
THESE PLANS AND SPECIFICATIONS ARE THE PROPERTY OF MCDONALD'S CORPORATION AND SHALL NOT BE REPRODUCED WITHOUT THEIR WRITTEN PERMISSION.
NORTHEAST REGION
690 CANTON STREET
WESTWOOD, MA

PLAN APPROVALS	DATE	SIGNATURE
		APPROVED MCDONALD'S AGENT

