

TRC  
Wannalancit Mills  
650 Suffolk Street  
Lowell, MA 01854

Main 978-970-5600  
Fax 978-453-1885

## Memorandum

**To:** Kimberly N. Tisa, United States Environmental Protection Agency  
**From:** David M. Sullivan, LSP, CHMM, TRC Environmental Corporation  
**Subject:** Liberty Street Drainage Improvements  
Analytical Results from Supplemental Soil Data Collection Along Drainage  
Installation Route  
New Bedford, Massachusetts  
**Date:** June 17, 2010  
**CC:** Scott Alfonse, Cheryl Henlin, City of New Bedford, Department of Environmental  
Stewardship  
Molly Cote, Massachusetts Department of Environmental Protection  
Jeffrey Saunders, Malcolm Beeler, TRC Environmental Corporation

---

This memorandum transmits the tabulated polychlorinated biphenyl (PCB) data obtained from supplemental soil sample collection related to the proposed Liberty Street Utility-Related Abatement Measure (URAM). The proposed URAM will support proposed drainage improvements that the City of New Bedford's (City) Department of Public Infrastructure (DPI) plans to implement at the New Bedford High School (NBHS) portion of the Parker Street Waste Site (PSWS).

TRC Environmental Corporation (TRC) performed supplemental soil sampling along the proposed drainage line route per the City's February 25, 2010 letter to the United States Environmental Protection Agency. The soil sampling was conducted by TRC via direct-push on May 12, 2010.

The analytical data are summarized on the attached Table 1. The supplemental soil sample locations (soil borings SB-LSD-1 through SB-LSD-8) and corresponding analytical data are also illustrated on Figure 1 in addition to previously collected soil samples in the vicinity of the proposed drainage line.

1.

Only one soil sample [SB-LSD-5 (1-3)] exhibited a total concentration of PCB Aroclors greater than 1 milligram per kilogram (mg/kg). The total concentration of PCB Aroclors in SB-LSD-5 (1-3) was 3.918 mg/kg. Twenty-one of the twenty-six soil samples (including the two field duplicates) exhibited detectable concentrations of total PCB Aroclors less than 1 mg/kg. The PCB Aroclor detections that were less than 1 mg/kg ranged in concentration from 0.0607 mg/kg [SB-LSD-3 (1-3)] to 0.919 mg/kg [SB-LSD-7 (1-3)].

We look forward to discussing the results with you at your earliest convenience.

**Summary of Analytical Results for Soil Samples - May 2010**  
**Liberty Street**  
**New Bedford, Massachusetts**

Analysis	Analyte	Sample Location:						SB-LSD-1			SB-LSD-2				SB-LSD-3			SB-LSD-4		
		Sample Depth (ft.):						0-1	1-3	3-4	0-1	1-3	1-3	3-4	0-1	1-3	4-5	0-1	1-3	3.5-4.5
		S-1/GW-2	S-1/GW-3	S-2/GW-2	S-2/GW-3	RC S-1*	TSCA	5/12/2010	5/12/2010	5/12/2010	5/12/2010	5/12/2010	5/12/2010	5/12/2010	5/12/2010	5/12/2010	5/12/2010	5/12/2010	5/12/2010	5/12/2010
<b>PCBs</b> (mg/kg)	Aroclor 1016	2	2	3	3	2	1	0.0544 U	0.0521 U	0.0567 U	0.0569 U	0.0570 U	0.0560 U	0.0563 U	0.0551 U	0.0555 U	0.0599 U	0.0559 U	0.0564 U	0.0608 U
	Aroclor 1221	2	2	3	3	2	1	0.0544 U	0.0521 U	0.0567 U	0.0569 U	0.0570 U	0.0560 U	0.0563 U	0.0551 U	0.0555 U	0.0599 U	0.0559 U	0.0564 U	0.0608 U
	Aroclor 1232	2	2	3	3	2	1	0.0544 U	0.0521 U	0.0567 U	0.0569 U	0.0570 U	0.0560 U	0.0563 U	0.0551 U	0.0555 U	0.0599 U	0.0559 U	0.0564 U	0.0608 U
	Aroclor 1242	2	2	3	3	2	1	0.0544 U	0.0521 U	0.0567 U	0.0569 U	0.0570 U	0.0560 U	0.0563 U	0.0551 U	0.0555 U	0.0599 U	0.0559 U	0.0564 U	0.0608 U
	Aroclor 1248	2	2	3	3	2	1	0.0544 U	0.0521 U	0.0567 U	0.0569 U	0.0570 U	0.0560 U	0.0563 U	0.0551 U	0.0555 U	0.0599 U	0.0559 U	0.0564 U	0.0608 U
	Aroclor 1254	2	2	3	3	2	1	<b>0.0685 J</b>	0.0521 U	<b>0.611 J</b>	<b>0.131 J</b>	<b>0.510 J</b>	<b>0.478 J</b>	<b>0.523 J</b>	<b>0.0615 J</b>	0.0555 U	0.0599 U	<b>0.0759 J</b>	<b>0.163 J</b>	0.0608 U
	Aroclor 1260	2	2	3	3	2	1	0.0544 U	0.0521 U	<b>0.227 J</b>	0.0569 U	<b>0.221 J</b>	<b>0.210 J</b>	<b>0.215 J</b>	0.0551 U	<b>0.0607 J</b>	0.0599 U	0.0559 U	<b>0.109 J</b>	0.0608 U
	Total PCBs	2	2	3	3	2	1	<b>0.0685 J</b>	0.0521 U	<b>0.838 J</b>	<b>0.131 J</b>	<b>0.731 J</b>	<b>0.688 J</b>	<b>0.738 J</b>	<b>0.0615 J</b>	<b>0.0607 J</b>	0.0599 U	<b>0.0759 J</b>	<b>0.272 J</b>	0.0608 U

**Notes:**

mg/kg - milligrams per kilogram (dry weight) or parts per million (ppm).

J - Estimated value.

U - Compound was not detected at specified quantitation limit.

Values in **Bold** indicate the compound was detected.

**Values shown in Bold and shaded type exceed one or more of the listed MassDEP Method 1 standards.**

PCBs - Polychlorinated Biphenyls.

RC - Reportable Concentration.

TSCA - Toxic Substances Control Act criteria.

\* - For reference purposes only.

**Summary of Analytical Results for Soil Samples - May 2010**  
**Liberty Street**  
**New Bedford, Massachusetts**

Analysis	Analyte	Sample Location:						SB-LSD-5			SB-LSD-6			SB-LSD-7				SB-LSD-8						
		Sample Depth (ft.):						0-1	1-3	3.5-4.5	0-1	1-3	3.5-5	0-1	1-3	1-3	3.5-4.5	0-1	1-3	3.5-4.5				
		Sample Date:						5/12/2010	5/12/2010	5/12/2010	5/12/2010	5/12/2010	5/12/2010	5/12/2010	5/12/2010	5/12/2010	Field Dup	5/12/2010	5/12/2010	5/12/2010				
		S-1/GW-2	S-1/GW-3	S-2/GW-2	S-2/GW-3	RC S-1*	TSCA																	
<b>PCBs</b> (mg/kg)	Aroclor 1016	2	2	3	3	2	1	0.0588 U	0.0540 U	0.0517 U	0.0540 U	0.0623 U	0.0582 U	0.0610 U	0.0585 U	0.0581 U	0.0500 U	0.0563 U	0.0569 U	0.0551 U				
	Aroclor 1221	2	2	3	3	2	1	0.0588 U	0.0540 U	0.0517 U	0.0540 U	0.0623 U	0.0582 U	0.0610 U	0.0585 U	0.0581 U	0.0500 U	0.0563 U	0.0569 U	0.0551 U				
	Aroclor 1232	2	2	3	3	2	1	0.0588 U	0.0540 U	0.0517 U	0.0540 U	0.0623 U	0.0582 U	0.0610 U	0.0585 U	0.0581 U	0.0500 U	0.0563 U	0.0569 U	0.0551 U				
	Aroclor 1242	2	2	3	3	2	1	0.0588 U	0.0540 U	0.0517 U	0.0540 U	0.0623 U	0.0582 U	0.0610 U	0.0585 U	0.0581 U	0.0500 U	0.0563 U	0.0569 U	0.0551 U				
	Aroclor 1248	2	2	3	3	2	1	0.0588 U	0.0540 U	0.0517 U	0.0540 U	0.0623 U	0.0582 U	0.0610 U	0.0585 U	0.0581 U	0.0500 U	0.0563 U	0.0569 U	0.0551 U				
	Aroclor 1254	2	2	3	3	2	1	<b>0.458 J</b>	<b>3.01 J</b>	<b>0.0645 J</b>	<b>0.117 J</b>	<b>0.277 J</b>	0.0582 U	<b>0.365 J</b>	<b>0.676 J</b>	<b>0.676 J</b>	<b>0.0819 J</b>	<b>0.256 J</b>	<b>0.105 J</b>	<b>0.150 J</b>				
	Aroclor 1260	2	2	3	3	2	1	<b>0.252 J</b>	<b>0.908 J</b>	0.0517 U	<b>0.096 J</b>	<b>0.146 J</b>	0.0582 U	<b>0.129 J</b>	<b>0.243 J</b>	<b>0.221 J</b>	0.0500 U	<b>0.102 J</b>	0.0569 U	<b>0.0944 J</b>				
	Total PCBs	2	2	3	3	2	1	<b>0.710 J</b>	<b>3.918 J</b>	<b>0.0645 J</b>	<b>0.213 J</b>	<b>0.423 J</b>	0.0582 U	<b>0.494 J</b>	<b>0.919 J</b>	<b>0.897 J</b>	<b>0.0819 J</b>	<b>0.358 J</b>	<b>0.105 J</b>	<b>0.2444 J</b>				

**Notes:**

mg/kg - milligrams per kilogram (dry weight) or parts per million (ppm).

J - Estimated value.

U - Compound was not detected at specified quantitation limit.

Values in **Bold** indicate the compound was detected.

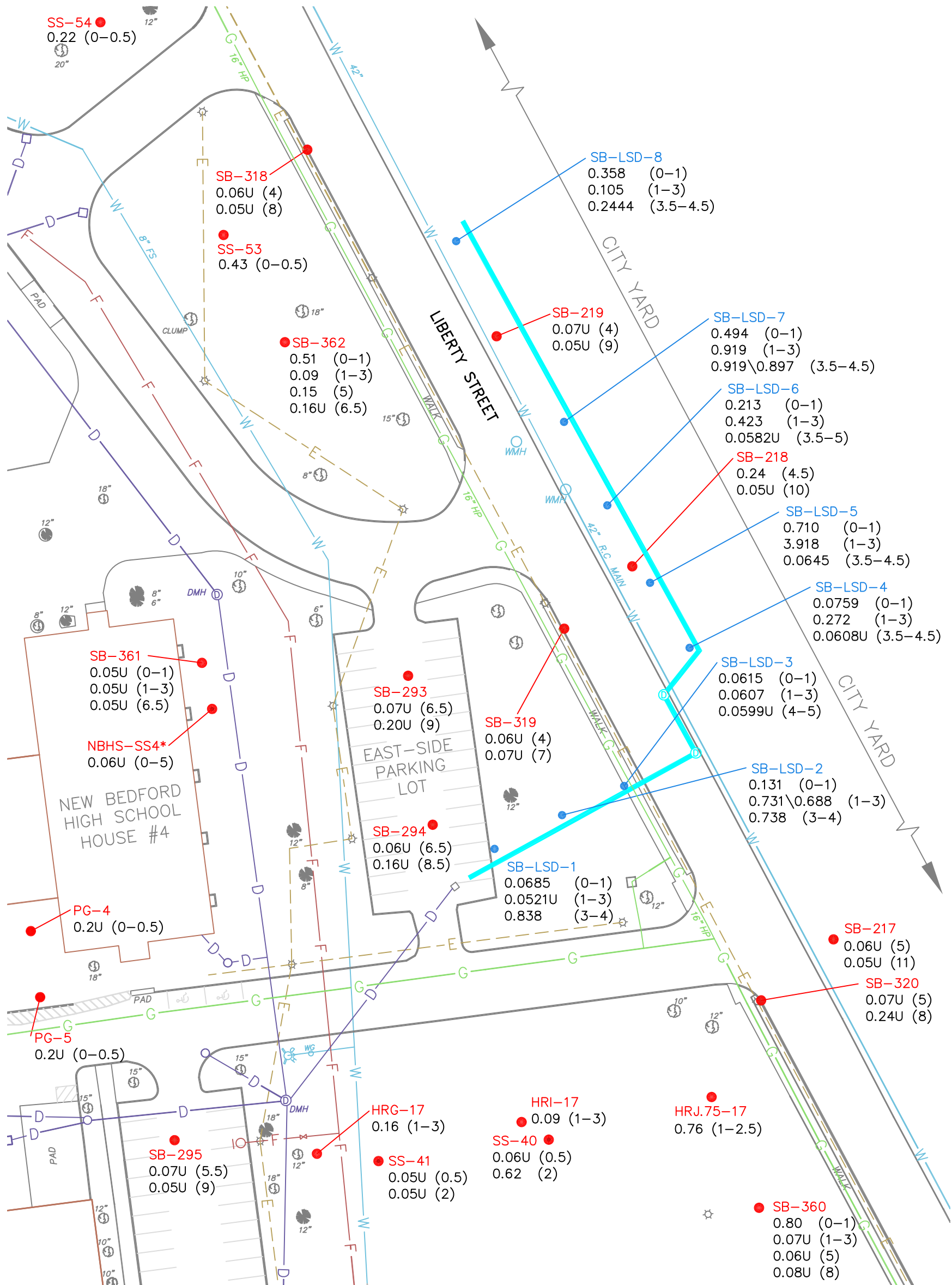
**Values shown in Bold and shaded type exceed one or more of the listed MassDEP Method 1 standards.**

PCBs - Polychlorinated Biphenyls.

RC - Reportable Concentration.

TSCA - Toxic Substances Control Act criteria.

\* - For reference purposes only.



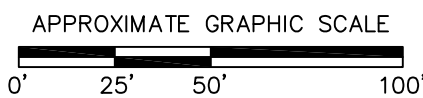
LEGEND:

- APPROXIMATE LOCATION OF PROPOSED DRAINAGE LINE
- D APPROXIMATE LOCATION OF DRAIN LINE
- F APPROXIMATE LOCATION OF FIRE LINE
- G APPROXIMATE LOCATION OF GAS LINE
- E APPROXIMATE LOCATION OF ELECTRIC LINE
- W APPROXIMATE LOCATION OF WATER LINE

TOTAL PCB CONCENTRATION  
mg/Kg DEPTH IN FEET

0.80	(0-1)
0.07U	(1-3)
0.06U	(5)
0.08U	(8)

U = NOT DETECTED



NEW BEDFORD HIGH SCHOOL LIBERTY STREET DRAINAGE CONSTRUCTION AREA NEW BEDFORD, MASSACHUSETTS	
SUPPLEMENTAL PCB SAMPLE LOCATION MAP	
Wannalancit Mills 650 Suffolk Street Lowell, MA 01854 (978) 970-5600	FIGURE <b>1</b>
DRAWN BY: HWB CHECKED BY: JBS	DATE: JUNE 2010