



Projects:\Nordic Fisheries-New Bedford\NOI

PRINCIPALS

March 7, 2022

Mr. Chance Perks, Conservation Agent
New Bedford Conservation Commission
133 William Street, Room 304
New Bedford, MA 02740

Subject: Supplemental Information – Notice of Intent (DEP No. 049-0885) Nordic Fisheries Inc., Pier Replacement Project, New Bedford, MA

Dear Commissioners:

On behalf of Nordic Fisheries, Inc. (“Nordic” or “Applicant”), Epsilon Associates, Inc. submits the enclosed materials and response to comments that arose during the New Bedford Conservation Commission March 1, 2022, Public Hearing.

Included in this submission are the following materials and information:

- ◆ Letter of Support from Jamie Ponte, Commissioner of the New Bedford Department of Public Infrastructure (DPI).
- ◆ Updated Plan Sheet Fig-09, Site Preparation Plan which depicts the approximate location of the silt curtain and floating surface boom to be installed and maintained around the active work zone for the duration of demolition and construction.
- ◆ MassDEP has issued the Project file # SE049-0885.
- ◆ We are in communication with MassDEP regarding the comments in the March 2, 2022. email to address 1) the adequacy of the silt curtain and surface boom for the project, and 2) that appropriate “clearances” through other permitting bodies that will be received through the forthcoming Water Quality Certification process with MassDEP and further review by the U.S. Army Corps of Engineers. Based on our discussion with MassDEP, comments or communication should be submitted by MassDEP in advance of the upcoming Hearing.
- ◆ We are preparing a construction sequence plan that presents the anticipated construction sequence/approach based on discussions with potential contractors

Theodore A Barten, PE
Margaret B Briggs
Dale T Raczynski, PE
Cindy Schlessinger
Lester B Smith, Jr

Robert D O’Neal, CCM, INCE
Michael D Howard, PWS, CWS
Douglas J Kelleher
AJ Jablonowski, PE

David E Hewett, LEED AP
Dwight R Dunk, LPD

David C Klinch, PWS, PMP
Maria B Hartnett

Richard M Lampeter, INCE
Geoff Starsiak, LEED AP BD+C

Marc Bergeron, PWS, CWS
Alyssa Jacobs, PWS

ASSOCIATES

Holly Carlson Johnston
Brian Lever
Dorothy K. Buckoski, PE
John Zimmer

3 Mill & Main Place, Suite 250
Maynard, MA 01754
www.epsilonassociates.com

978 897 7100

FAX 978 897 0099

and the engineer. This will be submitted under a separate header prior to the supplemental material submission deadline of Noon on March 9th.

We respectfully request the Commission's review and inclusion of these new and revised materials and information in support of the Nordic Fisheries Pier Replacement Project at the continued hearing scheduled for March 15th, 2022. Should you have any questions regarding this submission, please do not hesitate to contact me at (978) 461-6299 or via email at sscannell@epsilonassociates.com.

Sincerely,
EPSILON ASSOCIATES, INC.



Sean Scannell
Project Scientist

cc: M. Livingstone, Nordic Fisheries, Inc.
D. R. Dunk, Epsilon Associates, Inc.
C. Sams, Waterfront Structural Consulting, LLC



CITY OF NEW BEDFORD
Jonathan F. Mitchell, Mayor

Department of Public Infrastructure

Jamie Ponte
Commissioner

Water
Wastewater
Highways
Engineering
Cemeteries
Park Maintenance
Forestry

February 24, 2022

Mr. Dennis Audette
Chairman
City of New Bedford Conservation Commission
133 William Street
New Bedford, MA 02740

Subject: Nordic Fisheries Pier Replacement
Letter of Support for Project Implementation

Dear Chairman Audette:

On behalf of the City of New Bedford (City) Department of Public Infrastructure (DPI), I offer my full support for the Nordic Fisheries Pier Replacement. In December 2019, the New Bedford Port Authority (NBPA) notified the DPI of ground subsidence in the vicinity of Antonio Costa Boulevard and Nordic Fisheries. At that time, it was believed that a watermain break had caused the issue. Based on an initial site inspection by the City's Engineering Division and Highway Division, it appeared that other issues may have caused the ground subsidence leading to the watermain break.

To be proactive ensuring integrity of major stormwater and combined sewer overflow (CSO) outfalls, the City contracted with CDM Smith Inc. (CDM Smith) to conduct a multi-sensory inspection of Outfall 035, Outfall 036, and DP 202. The results of the program concluded that the Outfall 035 and DP 202 were in fair to good condition. The results were inconclusive for Outfall 036 due to tidal constraints impacting the inspection. Subsequent dive inspections indicated that the existing bulkhead was in suspect conditions with voids identified in the steel sheets and around existing penetrations through the bulkhead.

In August 2021, DPI was contacted by Epsilon Associated Inc. (Epsilon) regarding a bulkhead improvements project proposed in the vicinity of Nordic Fisheries and the City's outfalls. Following several field visits and meetings regarding a viable approach to design and construct the project, a set of draft design drawings were submitted to the DPI Engineering and Wastewater Divisions for review. The drawings were reviewed DPI, and comments submitted.

DPI agrees with the proposed approach to install a new bulkhead, fill the current pile supported concrete slab to reinforce the existing bulkhead, and leave a utility corridor with manhole access for future inspection or repair of Outfall 036. These improvements will reinforce the existing infrastructure and mitigate potential failures of Outfall 036 resulting from failure of the bulkhead. Failure of Outfall 036 would result in significant impacts to the City's stormwater and CSO system.

As such, the DPI provides our full support for this critical project. We ask that the following conditions be included in the approved Order of Conditions (OOC):

- All applicable City permits must be applied for prior to the start of construction.
- Engineering Division is notified a minimum of 72-hours prior to the start of construction.
- All construction work in the vicinity of Outfall 036 is overseen by the DPI Engineering Division.
- Final as-built plans are submitted to the DPI for our records.

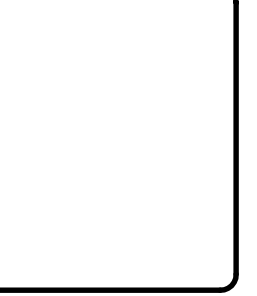
Should the Commission have any questions or require additional information, please feel free to contact Shawn Syde City Engineer or James Costa Wastewater Superintendent at (508) 979-1556.

Sincerely,

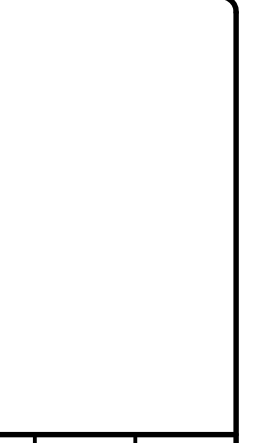


Jamie Ponte
Commissioner

Cc: Shawn T. Syde, City Engineer
Justin Chicca, Deputy Commissioner
James Costa, Wastewater Superintendent



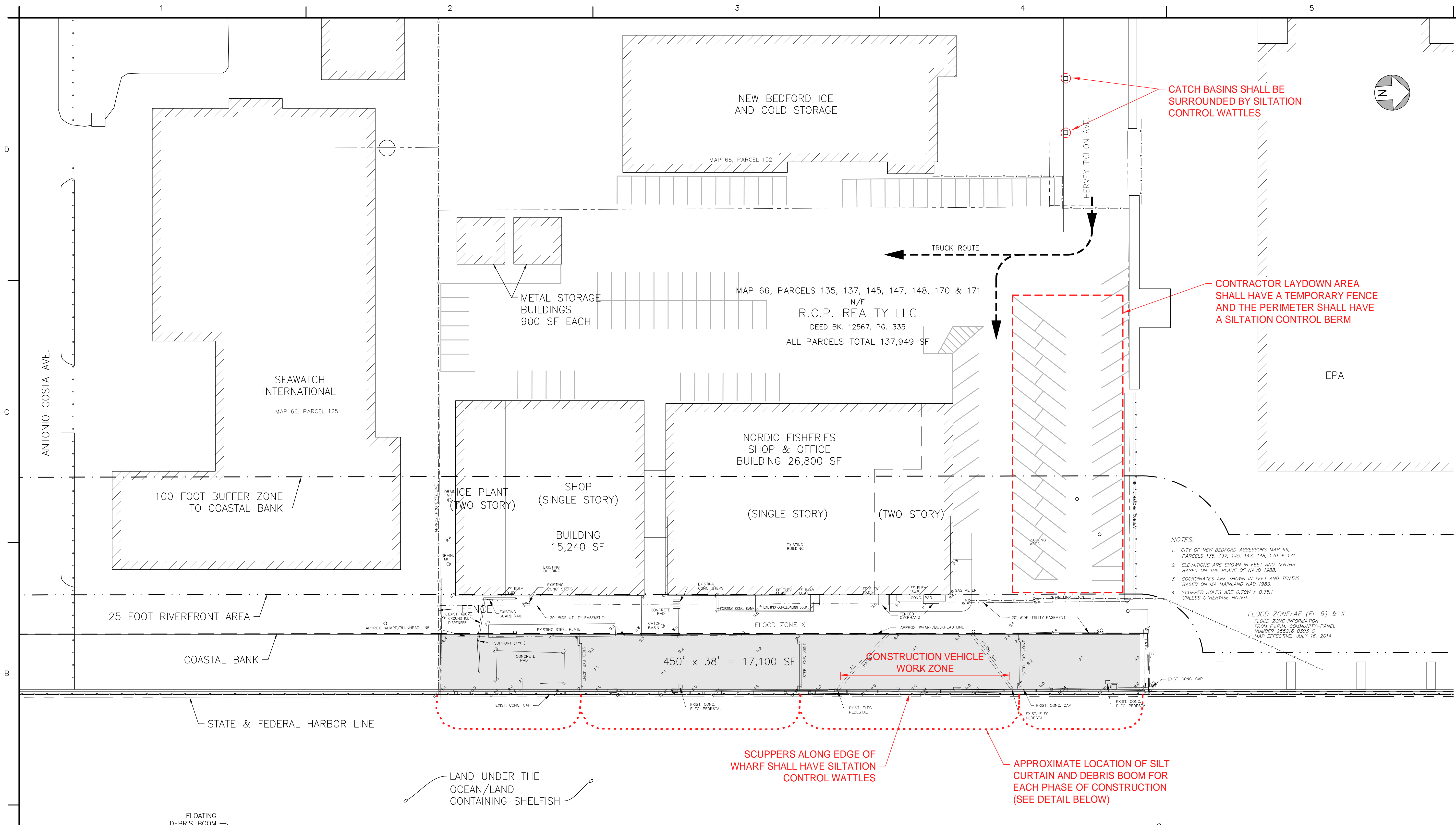
Date	Description



Designed by:	CDS	Date:	02/15/22
Drawn by:	TDG	Check by:	CDS
Reviewed by:	CDS	Design file no.:	006-19-FIG-09
		Scale:	1"=30'-0"

PROPOSED BULKHEAD
NORDIC FISHERIES, INC.
NEW BEDFORD, MA
SITE PREPARATION PLAN

Sheet reference number:
FIG-09
Sheet 9 of 9

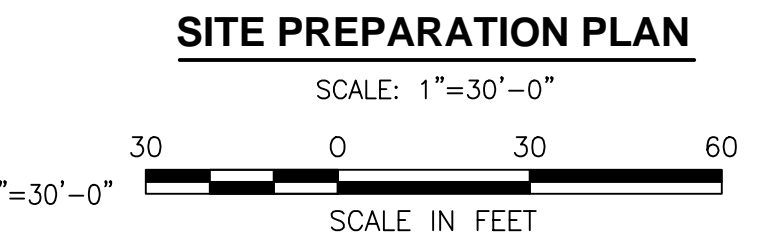
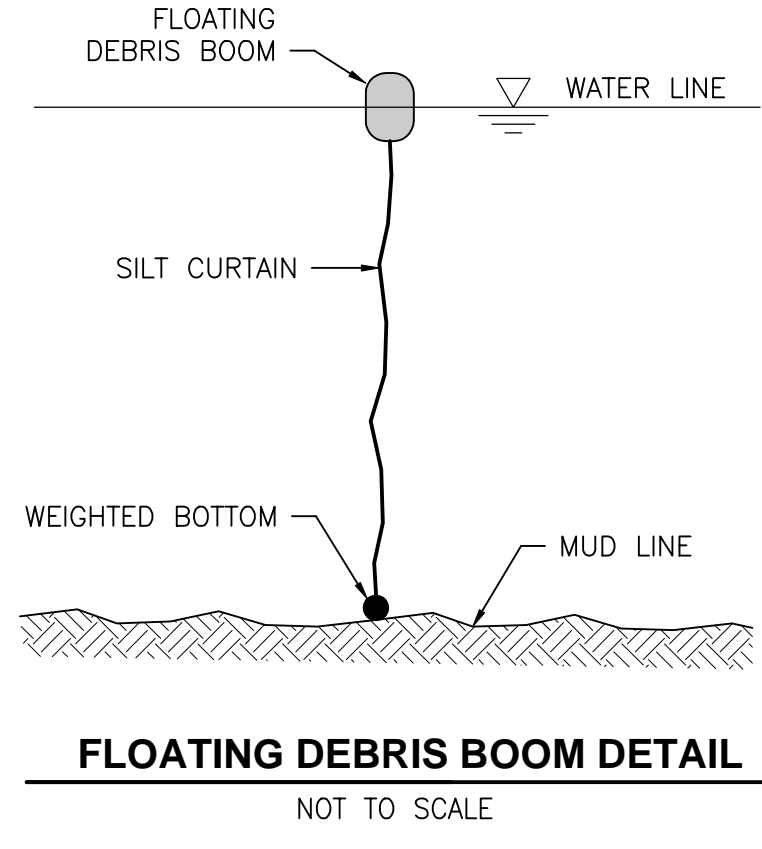


CATCH BASINS SHALL BE SURROUNDED BY SILTATION CONTROL WATTLES

CONTRACTOR LAYDOWN AREA SHALL HAVE A TEMPORARY FENCE AND THE PERIMETER SHALL HAVE A SILTATION CONTROL BERM

- NOTES:
1. CITY OF NEW BEDFORD ASSESSORS MAP 66, PARCELS 135, 137, 145, 147, 148, 170 & 171
 2. ELEVATIONS ARE SHOWN IN FEET AND TENTHS BASED ON THE PLANE OF NAVD 1988.
 3. COORDINATES ARE SHOWN IN FEET AND TENTHS BASED ON MA MAINLAND NAD 1983.
 4. SCUPPER HOLES ARE 0.70W X 0.35H UNLESS OTHERWISE NOTED.

FLOOD ZONE: AF (EL 6) & X
FLOOD ZONE INFORMATION FROM F.I.R.M. COMMUNITY-PANEL NUMBER 252216-0393-D MAP EFFECTIVE: JULY 16, 2014



LEGEND

[Grey Box] LOCATION OF PROJECT WORK

FOR PERMITTING PURPOSES ONLY

From: SERO_NOI@MassMail.state.ma.us
To: [Sean Scannell; jiahui.wang@mass.gov](mailto:Sean.Scannell:jiahui.wang@mass.gov)
Cc: sero_noi@state.ma.us; chancery.perks@newbedford-ma.gov; teresa.alves@newbedford-ma.gov; sero_noi@state.ma.us
Subject: MassDEP NOI File Number
Date: Friday, March 4, 2022 1:44:28 PM

COMMONWEALTH OF MASSACHUSETTS
EXECUTIVE OFFICE OF ENERGY & ENVIRONMENTAL AFFAIRS
DEPARTMENT OF ENVIRONMENTAL PROTECTION
SOUTHEAST REGIONAL OFFICE
20 RIVERSIDE DRIVE, LAKEVILLE, MA 02347 508-946-2700

Date: 03/04/2022 Municipality NEW BEDFORD

RE: NOTIFICATION OF WETLANDS PROTECTION ACT FILE NUMBER

The Department of Environmental Protection has received a Notice of Intent filed in accordance with the Wetlands Protection Act (M.G.L. c. 131, §40):

Applicant NORDIC FISHERIES INC. Address 14 HERVEY TICHON AVENUE,NEW BEDFORD MA Locus 14 HERVEY TICHON AVENUE , NEW BEDFORD MA	Owner Address
--	----------------------

This project has been assigned the following file # : **SE 049-0885**

ISSUANCE OF A FILE NUMBER INDICATES ONLY COMPLETENESS OF SUBMITTAL, NOT APPROVAL OF APPLICATION

Although a file # is being issued, please note the following:

ADDITIONAL REQUIREMENTS:

A Chapter 91 license may be required. Application and transmittal forms are available on the MassDEP website <http://www.mass.gov/eea/agencies/massdep/water/approvals/wetlands-and-waterways-forms.html#2>. For additional information, contact MassDEP Waterways Program by email at dep.waterways@mass.gov or visit <https://www.mass.gov/waterways-program-chapter-91>.

A 401 Water Quality Certification (WQC) (314 CMR 9.00) may be required for this project. The project qualifies for 401 Certification under the Army Corps of Engineers General Permit for Massachusetts (MAGP), provided that the project meets certain conditions outlined in 314 CMR 9.03 and 9.04, and the conditions under MAGP. WQC information is available at <https://www.mass.gov/regulations/314-CMR-9-401-water-quality-certification> and MAGP information is available at <http://www.nae.usace.army.mil/Missions/Regulatory/StateGeneralPermits/MassachusettsGeneralPermit.aspx>.

401 WQC applications must now be submitted electronically through MassDEP's ePLACE online tool at <https://www.mass.gov/lists/water-quality-certification-forms-massdep>. MASSDEP WILL NO LONGER ACCEPT PAPER APPLICATIONS FOR THESE FILINGS. General instructions and visual ePLACE step-by-step instructions to assist in submitting your application are available online at <https://www.mass.gov/how-to/ww-10-11-major-minor-fill-and-excavation-projects>. and <https://www.mass.gov/how-to/ww-07-08-09-water-quality-certifications-dredging-projects>

Review under Section 404 may be required. (Call 1-800-362-4367 for information).

Regards,
for MassDEP,

(508)-946-2806
Jiahui.Wang@mass.gov