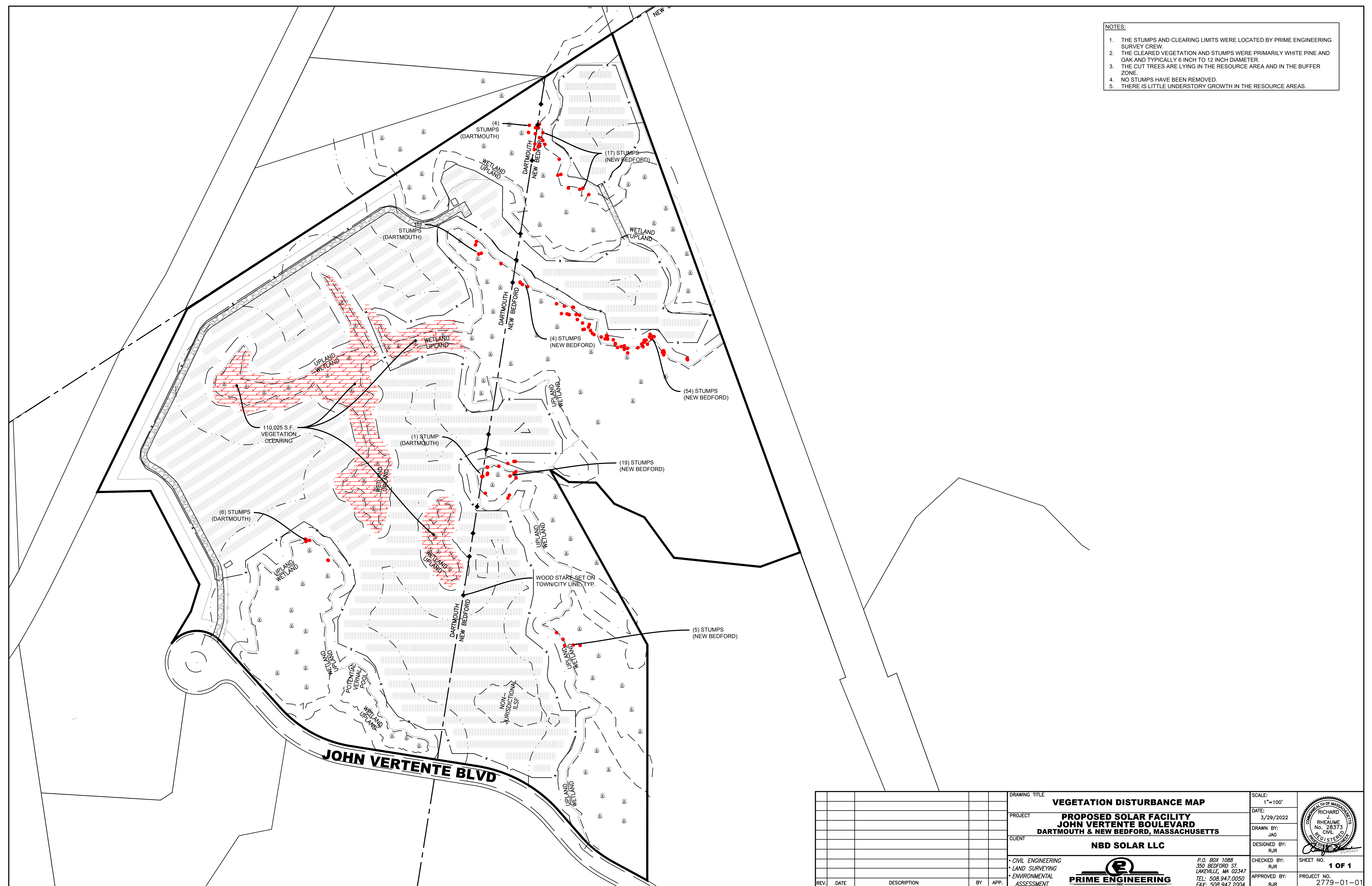


- NOTES:**
1. THE STUMPS AND CLEARING LIMITS WERE LOCATED BY PRIME ENGINEERING SURVEY CREW.
 2. THE CLEARED VEGETATION AND STUMPS WERE PRIMARILY WHITE PINE AND OAK AND TYPICALLY 6 INCH TO 12 INCH DIAMETER.
 3. THE CUT TREES ARE LYING IN THE RESOURCE AREA AND IN THE BUFFER ZONE.
 4. NO STUMPS HAVE BEEN REMOVED.
 5. THERE IS LITTLE UNDERSTORY GROWTH IN THE RESOURCE AREAS.



DRAWING TITLE VEGETATION DISTURBANCE MAP				SCALE: 1"=100'
PROJECT PROPOSED SOLAR FACILITY JOHN VERTENTE BOULEVARD DARTMOUTH & NEW BEDFORD, MASSACHUSETTS				DATE: 3/29/2022
CLIENT NBD SOLAR LLC				DRAWN BY: JAG
DESIGNED BY: RJR				CHECKED BY: RJR
APPROVED BY: RJR				PROJECT NO. 2779-01-01
• CIVIL ENGINEERING • LAND SURVEYING • ENVIRONMENTAL ASSESSMENT				SHEET NO. 1 OF 1
				P.O. BOX 1088 350 BEDFORD ST. LAKEVILLE, MA 02347 TEL: 508.947.0050 FAX: 508.947.2004
REV.	DATE	DESCRIPTION	BY	APP.

