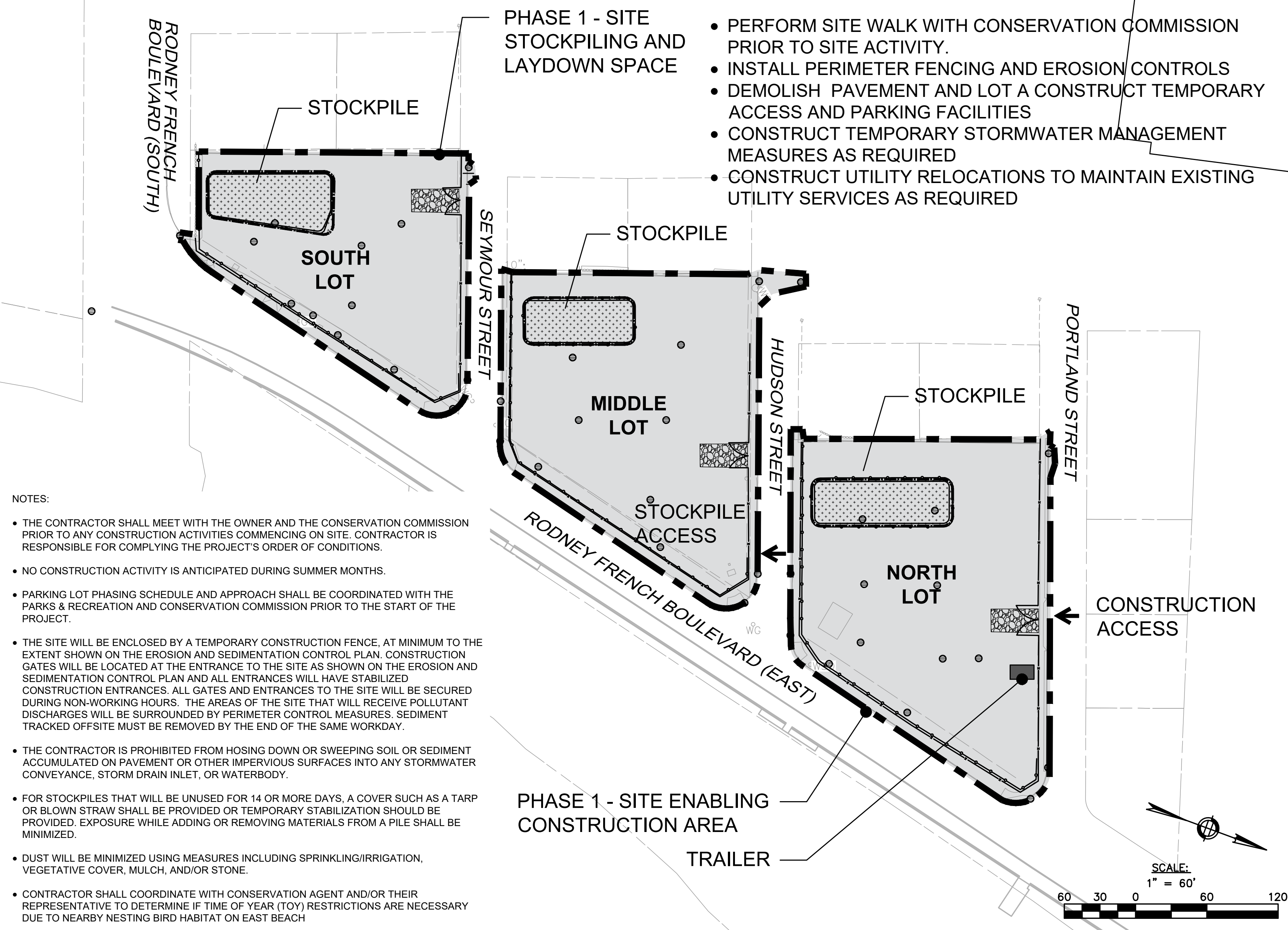


PHASE 1 - SITE ENABLING

DURATION: 1-2 MONTHS

SCOPE:

- PERFORM SITE WALK WITH CONSERVATION COMMISSION PRIOR TO SITE ACTIVITY.
- INSTALL PERIMETER FENCING AND EROSION CONTROLS
- DEMOLISH PAVEMENT AND LOT A CONSTRUCT TEMPORARY ACCESS AND PARKING FACILITIES
- CONSTRUCT TEMPORARY STORMWATER MANAGEMENT MEASURES AS REQUIRED
- CONSTRUCT UTILITY RELOCATIONS TO MAINTAIN EXISTING UTILITY SERVICES AS REQUIRED



NOTES:

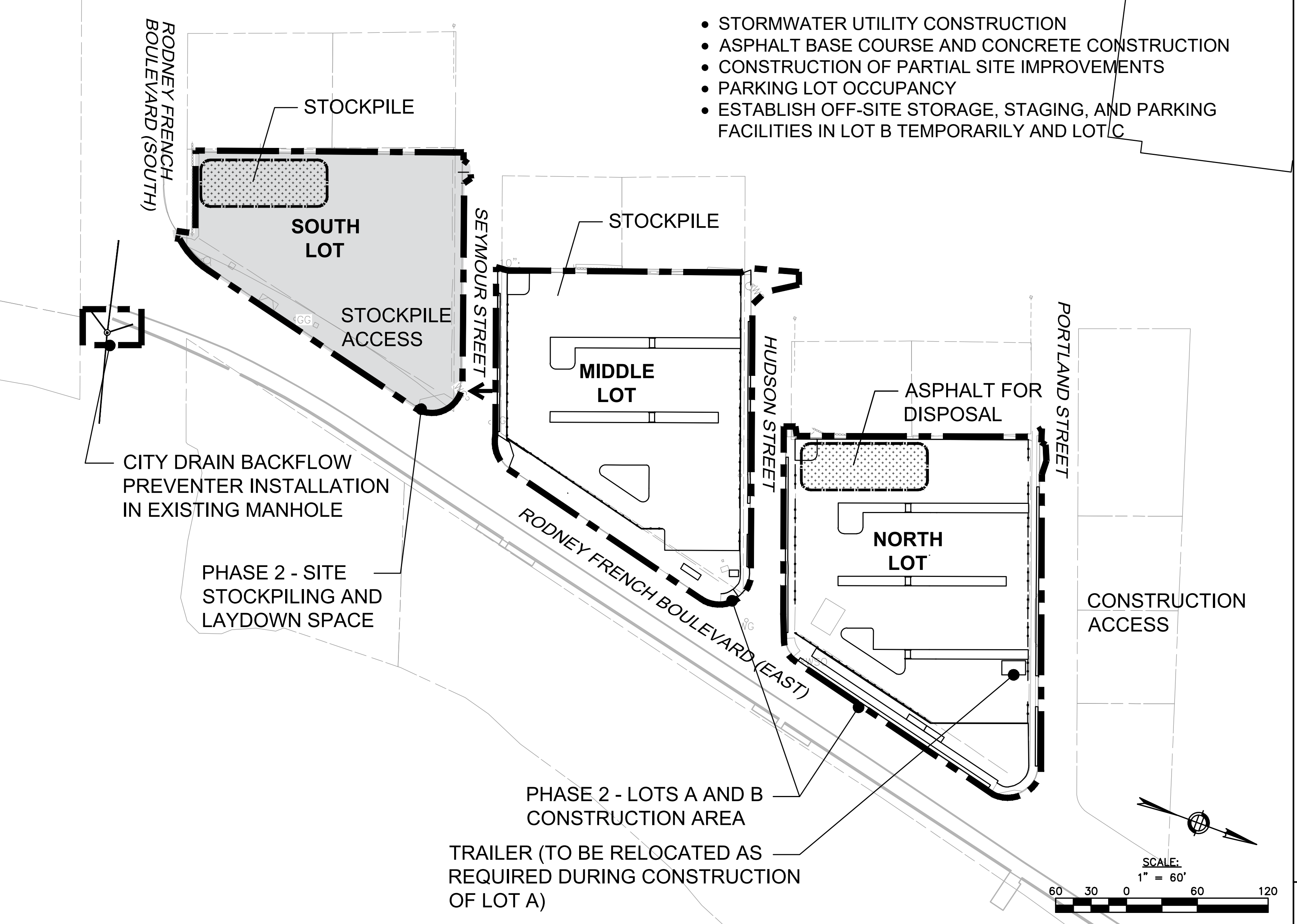
- THE CONTRACTOR SHALL MEET WITH THE OWNER AND THE CONSERVATION COMMISSION PRIOR TO ANY CONSTRUCTION ACTIVITIES COMMENCING ON SITE. CONTRACTOR IS RESPONSIBLE FOR COMPLYING THE PROJECT'S ORDER OF CONDITIONS.
- NO CONSTRUCTION ACTIVITY IS ANTICIPATED DURING SUMMER MONTHS.
- PARKING LOT PHASING SCHEDULE AND APPROACH SHALL BE COORDINATED WITH THE PARKS & RECREATION AND CONSERVATION COMMISSION PRIOR TO THE START OF THE PROJECT.
- THE SITE WILL BE ENCLOSED BY A TEMPORARY CONSTRUCTION FENCE, AT MINIMUM TO THE EXTENT SHOWN ON THE EROSION AND SEDIMENTATION CONTROL PLAN. CONSTRUCTION GATES WILL BE LOCATED AT THE ENTRANCE TO THE SITE AS SHOWN ON THE EROSION AND SEDIMENTATION CONTROL PLAN AND ALL ENTRANCES WILL HAVE STABILIZED CONSTRUCTION ENTRANCES. ALL GATES AND ENTRANCES TO THE SITE WILL BE SECURED DURING NON-WORKING HOURS. THE AREAS OF THE SITE THAT WILL RECEIVE POLLUTANT DISCHARGES WILL BE SURROUNDED BY PERIMETER CONTROL MEASURES. SEDIMENT TRACKED OFFSITE MUST BE REMOVED BY THE END OF THE SAME WORKDAY.
- THE CONTRACTOR IS PROHIBITED FROM HOSING DOWN OR SWEEPING SOIL OR SEDIMENT ACCUMULATED ON PAVEMENT OR OTHER IMPERVIOUS SURFACES INTO ANY STORMWATER CONVEYANCE, STORM DRAIN INLET, OR WATERBODY.
- FOR STOCKPILES THAT WILL BE UNUSED FOR 14 OR MORE DAYS, A COVER SUCH AS A TARP OR BLOWN STRAW SHALL BE PROVIDED OR TEMPORARY STABILIZATION SHOULD BE PROVIDED. EXPOSURE WHILE ADDING OR REMOVING MATERIALS FROM A PILE SHALL BE MINIMIZED.
- DUST WILL BE MINIMIZED USING MEASURES INCLUDING SPRINKLING/IRRIGATION, VEGETATIVE COVER, MULCH, AND/OR STONE.
- CONTRACTOR SHALL COORDINATE WITH CONSERVATION AGENT AND/OR THEIR REPRESENTATIVE TO DETERMINE IF TIME OF YEAR (TOY) RESTRICTIONS ARE NECESSARY DUE TO NEARBY NESTING BIRD HABITAT ON EAST BEACH

PHASE 2 - LOT A AND LOT B CONSTRUCTION

DURATION: 3 MONTHS

SCOPE:

- STORMWATER UTILITY CONSTRUCTION
- ASPHALT BASE COURSE AND CONCRETE CONSTRUCTION
- CONSTRUCTION OF PARTIAL SITE IMPROVEMENTS
- PARKING LOT OCCUPANCY
- ESTABLISH OFF-SITE STORAGE, STAGING, AND PARKING FACILITIES IN LOT B TEMPORARILY AND LOT C



Nitsch Engineering
 www.nitscheng.com
 2 Center Plaza, Suite 430
 Boston, MA 02108
 T: (617) 338-0063
 F: (617) 338-6472

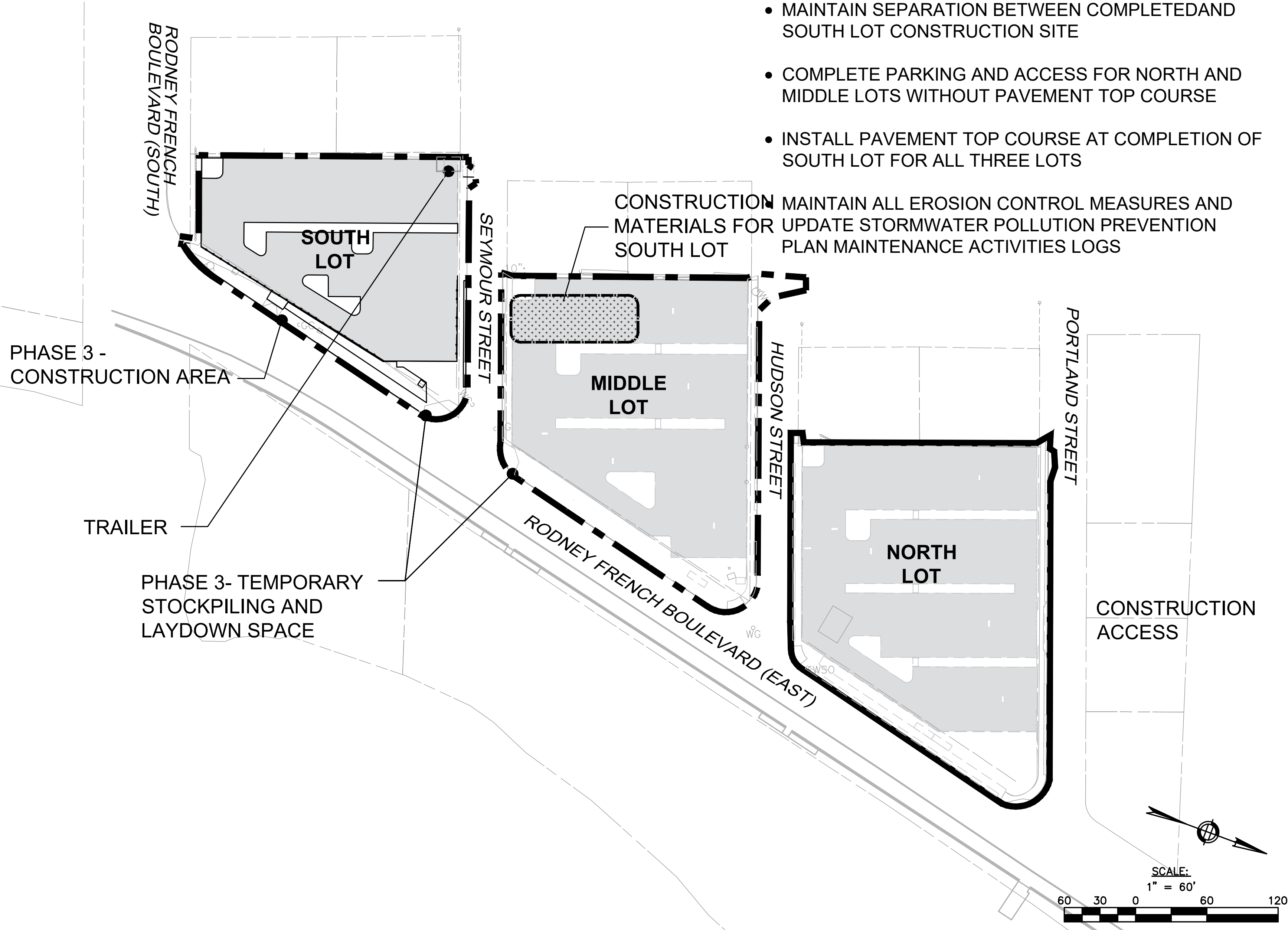
- ▶ Civil Engineering
- ▶ Land Surveying
- ▶ Transportation Engineering
- ▶ Structural Engineering
- ▶ Green Infrastructure
- ▶ Planning
- ▶ GIS

PHASE 3 - LOT C CONSTRUCTION & PAVEMENT TOP COURSE

DURATION: 2 MONTHS

SCOPE:

- MAINTAIN SEPARATION BETWEEN COMPLETED AND SOUTH LOT CONSTRUCTION SITE
- COMPLETE PARKING AND ACCESS FOR NORTH AND MIDDLE LOTS WITHOUT PAVEMENT TOP COURSE
- INSTALL PAVEMENT TOP COURSE AT COMPLETION OF SOUTH LOT FOR ALL THREE LOTS

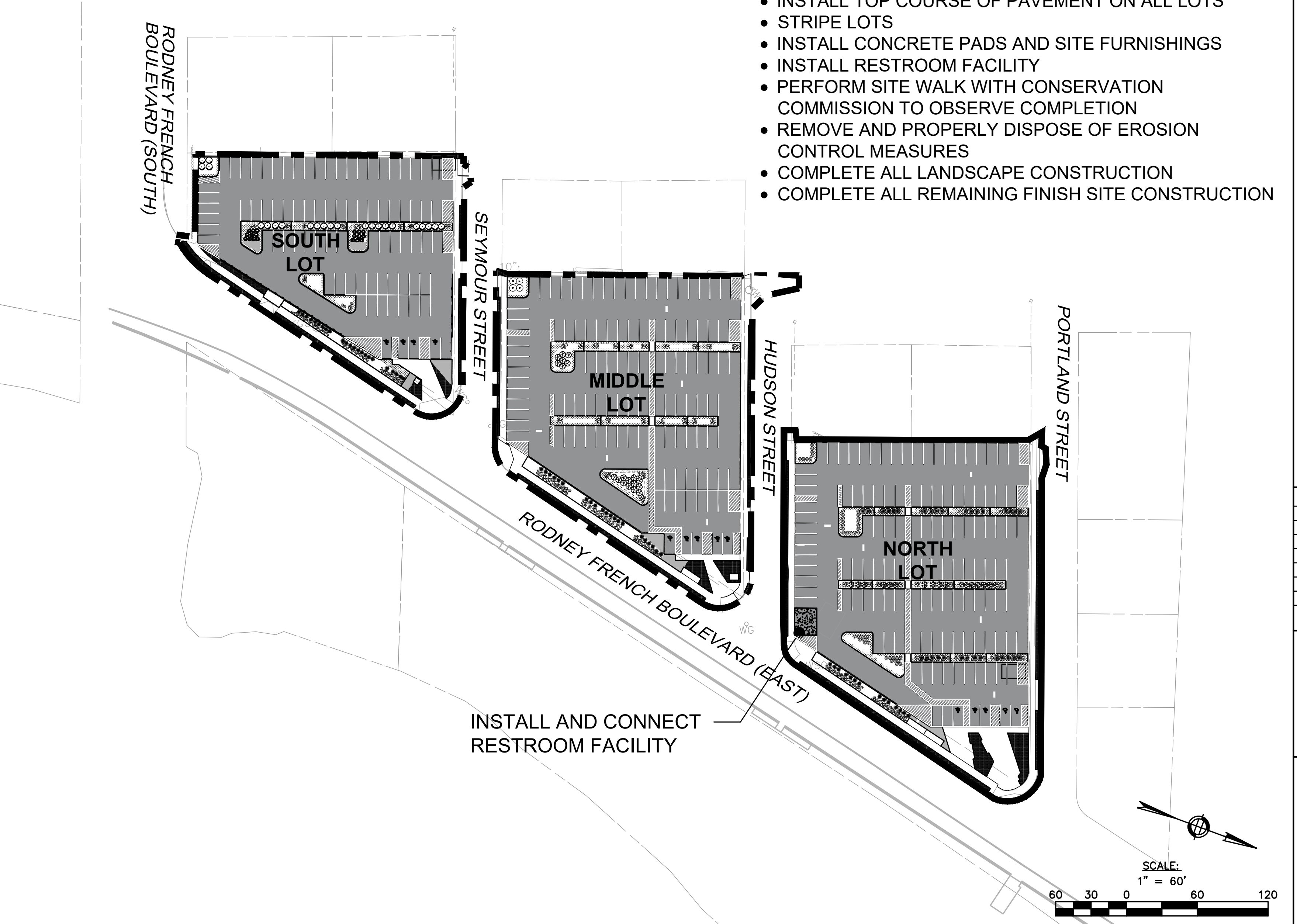


PHASE 4 - PLANTING, STRIPING, & FURNISHING

DURATION: 1 MONTH

SCOPE:

- INSTALL TOP COURSE OF PAVEMENT ON ALL LOTS
- STRIPE LOTS
- INSTALL CONCRETE PADS AND SITE FURNISHINGS
- INSTALL RESTROOM FACILITY
- PERFORM SITE WALK WITH CONSERVATION COMMISSION TO OBSERVE COMPLETION
- REMOVE AND PROPERLY DISPOSE OF EROSION CONTROL MEASURES
- COMPLETE ALL LANDSCAPE CONSTRUCTION
- COMPLETE ALL REMAINING FINISH SITE CONSTRUCTION



CONSTRUCTION PHASING PLAN
 EAST BEACH PARKING LOT GREEN INFRASTRUCTURE RETROFIT
 W3 EAST BEACH RODNEY FRENCH BOULEVARD, NEW BEDFORD, MA 02744
 PREPARED FOR:
CITY OF NEW BEDFORD
 181 HILLMAN STREET #3, NEW BEDFORD, MA 02740

REV.	COMMENTS	DATE

NITSCH PROJECT # 14650
 FILE: 14650-CPH.DWG
 SCALE: 1"=60'
 DATE: 06/14/2022
 PROJECT MANAGER: BFC
 SURVEYOR: NITSCH
 DRAFTED BY: BFC
 CHECKED BY: JLW/BFC

SHEET:
C-Ph
 OF REV.