

PROPOSED VEGETATION REMEDIATION PLAN

AFTER THE FACT NOTICE OF INTENT

JOHN VERTENTE BOULEVARD

IN NEW BEDFORD, MA

APPLICANT:

KEARSARGE ENERGY LE LLC
 1380 SOLDIERS FIELD ROAD, SUITE 3-1
 BOSTON, MA 02135

OWNERS:

DARTMOUTH ASSESSORS MAP 85

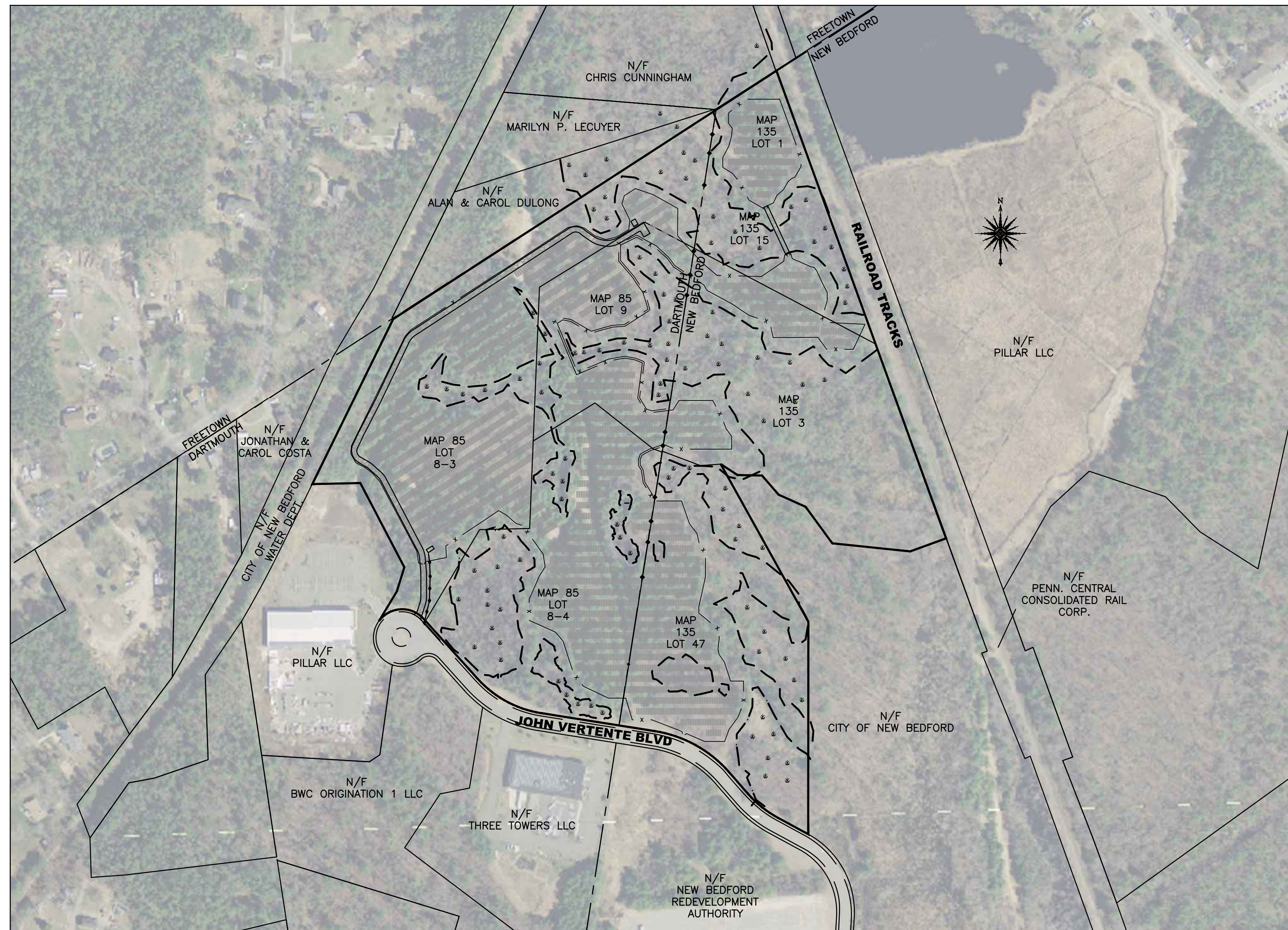
LOTS 8-3, 8-4 AND 9

KEARSARGE ENERGY LE LLC
 1380 SOLDIERS FIELD ROAD, SUITE 3-1
 BOSTON, MA 02135

NEW BEDFORD ASSESSORS MAP 135

LOTS 1, 3, 15 & 47

KEARSARGE ENERGY LE LLC
 1380 SOLDIERS FIELD ROAD, SUITE 3-1
 BOSTON, MA 02135



LOCUS
SCALE: 1"=200'

JULY 7, 2022

SCHEDULE OF DRAWINGS

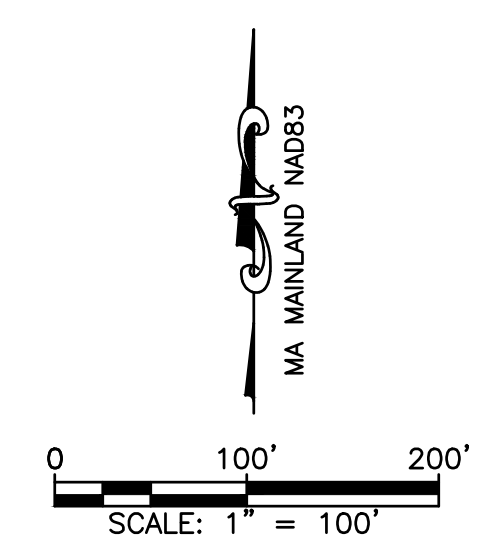
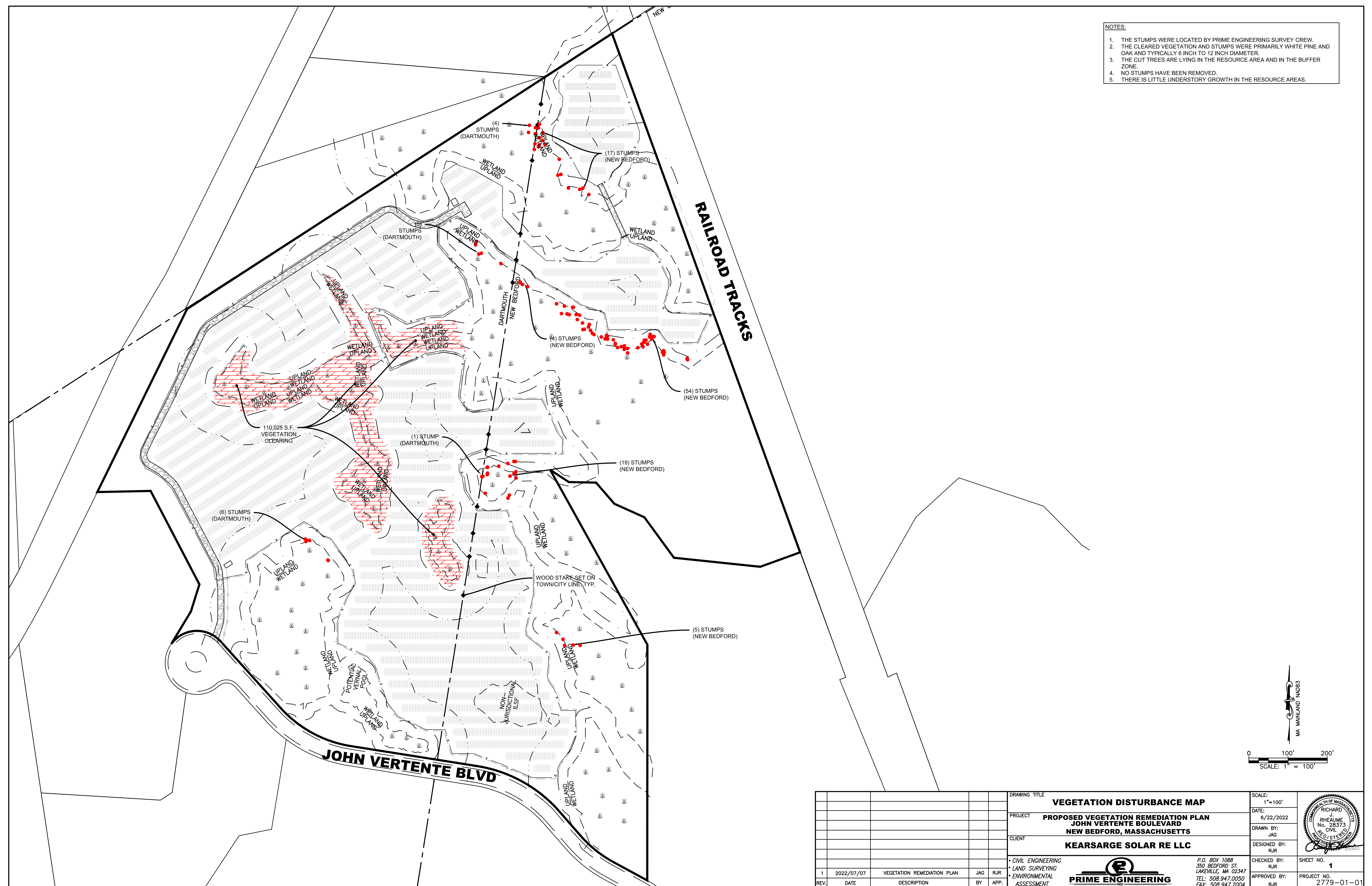
SHEET #	PLAN TITLE
-	COVER SHEET
1	VEGETATION DISTURBANCE MAP
2	SITE CLEAN UP PLAN
3	PROPOSED VEGETATION REMEDIATION PLAN


PREPARED BY:

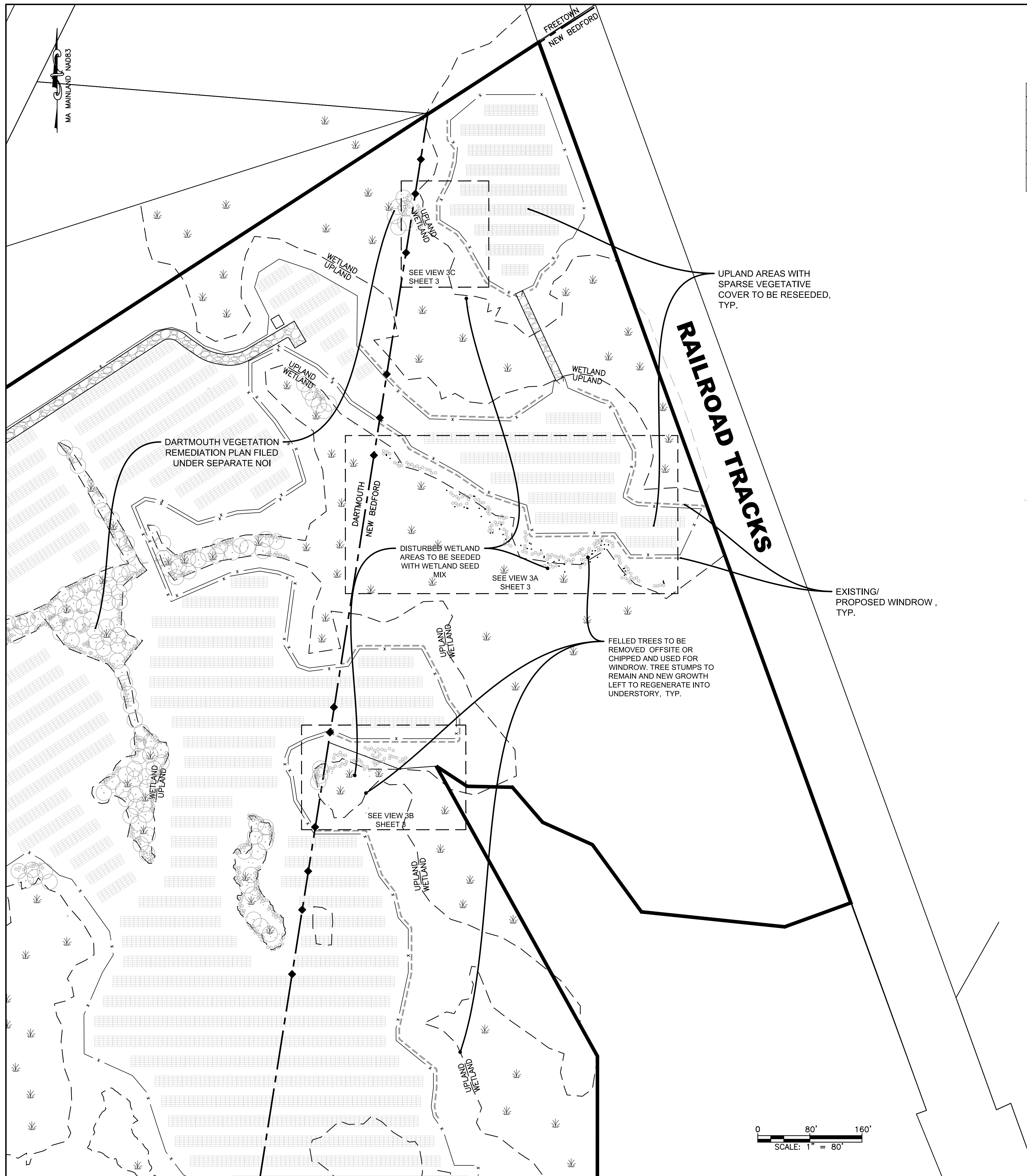


CIVIL ENGINEERING—LAND SURVEYING—ENVIRONMENTAL ASSESSMENT
 P.O. BOX 1088, 350 BEDFORD STREET, LAKEVILLE, MA 02347
 TEL: 508.947.0050 FAX: 508.947.2004

- NOTES:
1. THE STUMPS WERE LOCATED BY PRIME ENGINEERING SURVEY CREW.
 2. THE CLEARED VEGETATION AND STUMPS WERE PRIMARILY WHITE PINE AND OAK AND TYPICALLY 6 INCH TO 12 INCH DIAMETER.
 3. THE CUT TREES ARE LYING IN THE RESOURCE AREA AND IN THE BUFFER ZONE.
 4. NO STUMPS HAVE BEEN REMOVED.
 5. THERE IS LITTLE UNDERSTORY GROWTH IN THE RESOURCE AREAS.



				DRAWING TITLE VEGETATION DISTURBANCE MAP		SCALE: 1"=100'
				PROJECT PROPOSED VEGETATION REMEDIATION PLAN JOHN VERTENTE BOULEVARD NEW BEDFORD, MASSACHUSETTS		DATE: 6/22/2022
				CLIENT KEARSARGE SOLAR RE LLC		DRAWN BY: JAG
				* CIVIL ENGINEERING * LAND SURVEYING * ENVIRONMENTAL ASSESSMENT		DESIGNED BY: RJR
				 PRIME ENGINEERING P.O. BOX 1088 350 BEDFORD ST. LAKEVILLE, MA 02347 TEL: 508.947.0050 FAX: 508.947.2004		CHECKED BY: RJR
1	2022/07/07	VEGETATION REMEDIATION PLAN	JAG	RJR		SHEET NO. 1
REV.	DATE	DESCRIPTION	BY	APP.		PROJECT NO. 2779-01-01



UPLAND SEED MIX:

DISTURBED HERBACEOUS UPLAND AREAS TO BE SEEDED WITH ONE POUND PER 1,250 SQUARE FEET OF NEW ENGLAND WETLAND PLANTS, INC. NEW ENGLAND EROSION CONTROL/RESTORATION MIX FOR DRY SITES SEED MIX, OR APPROVED EQUAL WHICH CONTAINS THE FOLLOWING SPECIMENS:

Botanical Name	Common Name	Indicator
<i>Elymus canadensis</i>	Canada Wild Rye	FACU+
<i>Festuca rubra</i>	Red Fescue	FACU
<i>Lolium multiflorum</i>	Annual Ryegrass	
<i>Lolium perenne</i>	Perennial Ryegrass	
<i>Schizachyrium scoparium</i>	Little Bluestem	FACU
<i>Panicum virgatum</i>	Switch Grass	FAC
<i>Sorghastrum nutans</i>	Indian Grass	UPL

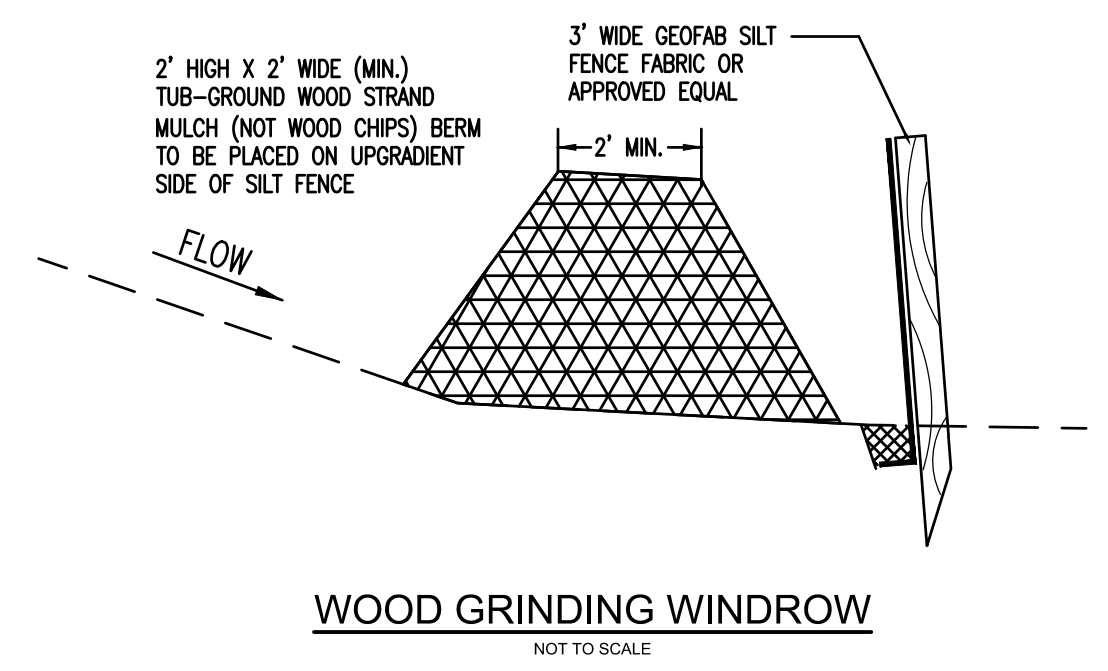
WETLAND SEED MIX:

DISTURBED HERBACEOUS WETLAND AREAS TO BE SEEDED WITH ONE POUND PER 2,500 SQUARE FEET OF NEW ENGLAND WETLAND PLANTS, INC. NEW ENGLAND WETMIX SEED MIX, OR APPROVED EQUAL WHICH CONTAINS THE FOLLOWING SPECIMENS:

Botanical Name	Common Name	Indicator
<i>Carex vulpinoidea</i>	Fox Sedge	OBL
<i>Carex scoparia</i>	Blunt Broom Sedge	FACW
<i>Carex lurida</i>	Lurid Sedge	OBL
<i>Carex lupulina</i>	Hop Sedge	OBL
<i>Poa palustris</i>	Fowl Bluegrass	FACW
<i>Bidens frondosa</i>	Beggar Ticks	FACW
<i>Scirpus atrovirens</i>	Green Bulrush	OBL
<i>Asclepias incarnata</i>	Swamp Milkweed	OBL
<i>Carex crinita</i>	Fringed Sedge	OBL
<i>Vernonia noveboracensis</i>	New York Ironweed	FACW+
<i>Juncus effusus</i>	Soft Rush	FACW+
<i>Aster lateriflorus (Symphyotrichum lateriflorum)</i>	Starved/Calico Aster	FACW
<i>Iris versicolor</i>	Blue Flag	OBL
<i>Glyceria grandis</i>	American Mannagrass	OBL
<i>Mimulus ringens</i>	Square Stemmed Monkey Flower	OBL
<i>Eupatorium maculatum (Eutrochium maculatum)</i>	Spotted Joe Pye Weed	OBL

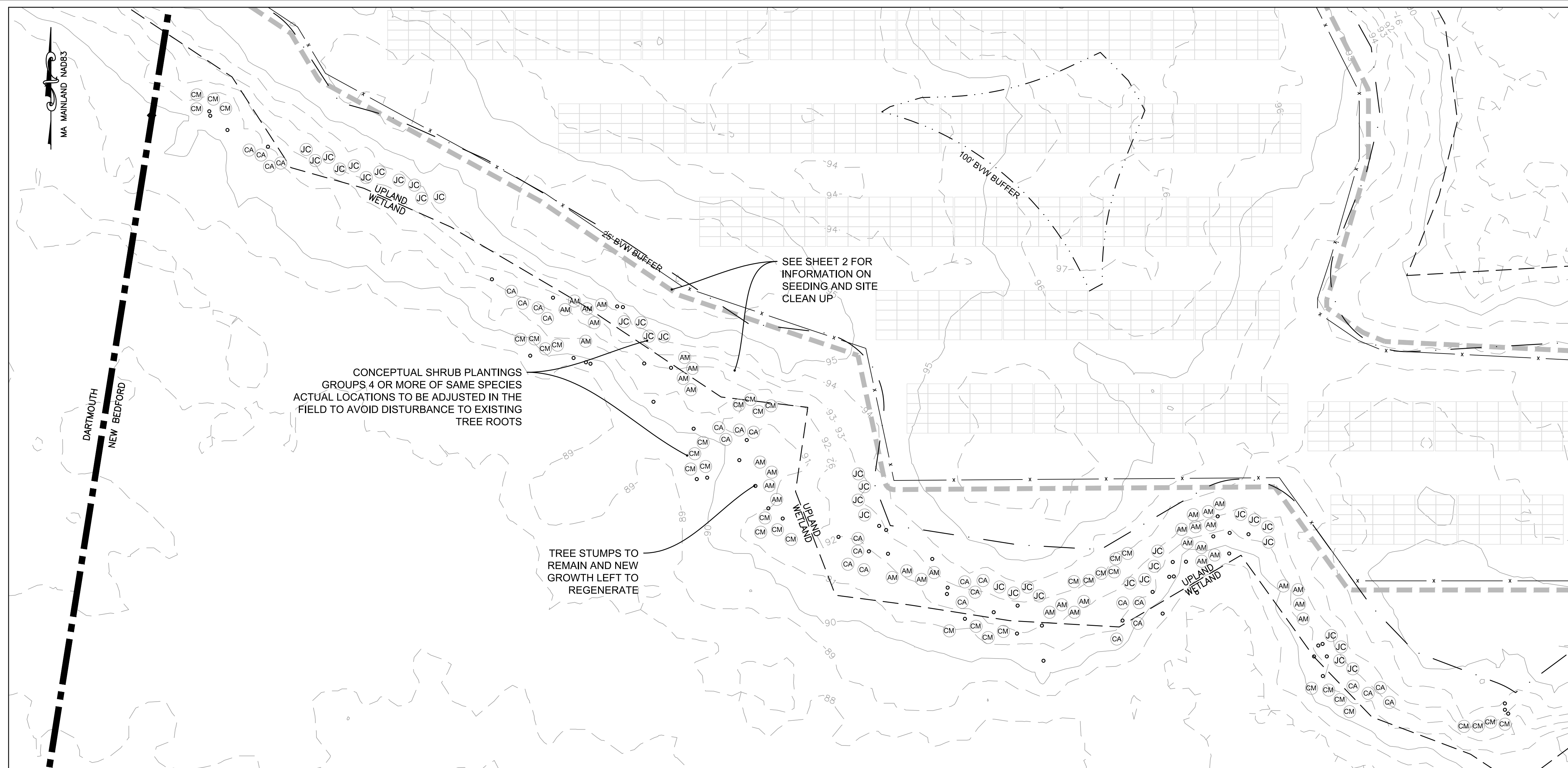
GENERAL SITE WORK NOTES

- CONTRACTOR TO ARRANGE ACCESS FOR NEW BEDFORD CONSERVATION COMMISSION AGENT TO CONDUCT SITE VISITS.
- ALL FELLED TREES TO BE REMOVED OFFSITE OR CHIPPED AND USED FOR WINDROWS.
- TREE STUMPS TO REMAIN AND NEW GROWTH LEFT TO REGENERATE INTO UNDERSTORY.
- NO ADDITIONAL CUTTING OF STANDING TREES IS PERMITTED.
- NO ADDITIONAL DISTURBANCE TO WETLAND AREAS IS PERMITTED.
- HEAVY MACHINERY SHOULD NOT BE USED WITHIN WETLAND AREA TO AVOID COMPACTION.
- SECTIONS OF EXISTING CHAINLINK FENCE MAY NEED TO BE TEMPORARILY REMOVED TO COMPLETE CLEAN UP.
- AREAS OF SPARSE HERBACEOUS VEGETATION SHOULD BE SEEDED, INCLUDING UPLAND AND WETLAND AREAS DISTURBED BY TREE REMOVAL/CLEAN UP WORK AND UPLAND AREAS THAT HAVE NOT YET ESTABLISHED A GROUND COVER OF OVER 75%.
- ONCE THE FELLED TREE REMOVAL IS COMPLETE, A REPORT WITH PICTURES OF THE OUTCOME SHALL BE SUBMITTED TO THE CONSERVATION COMMISSION.

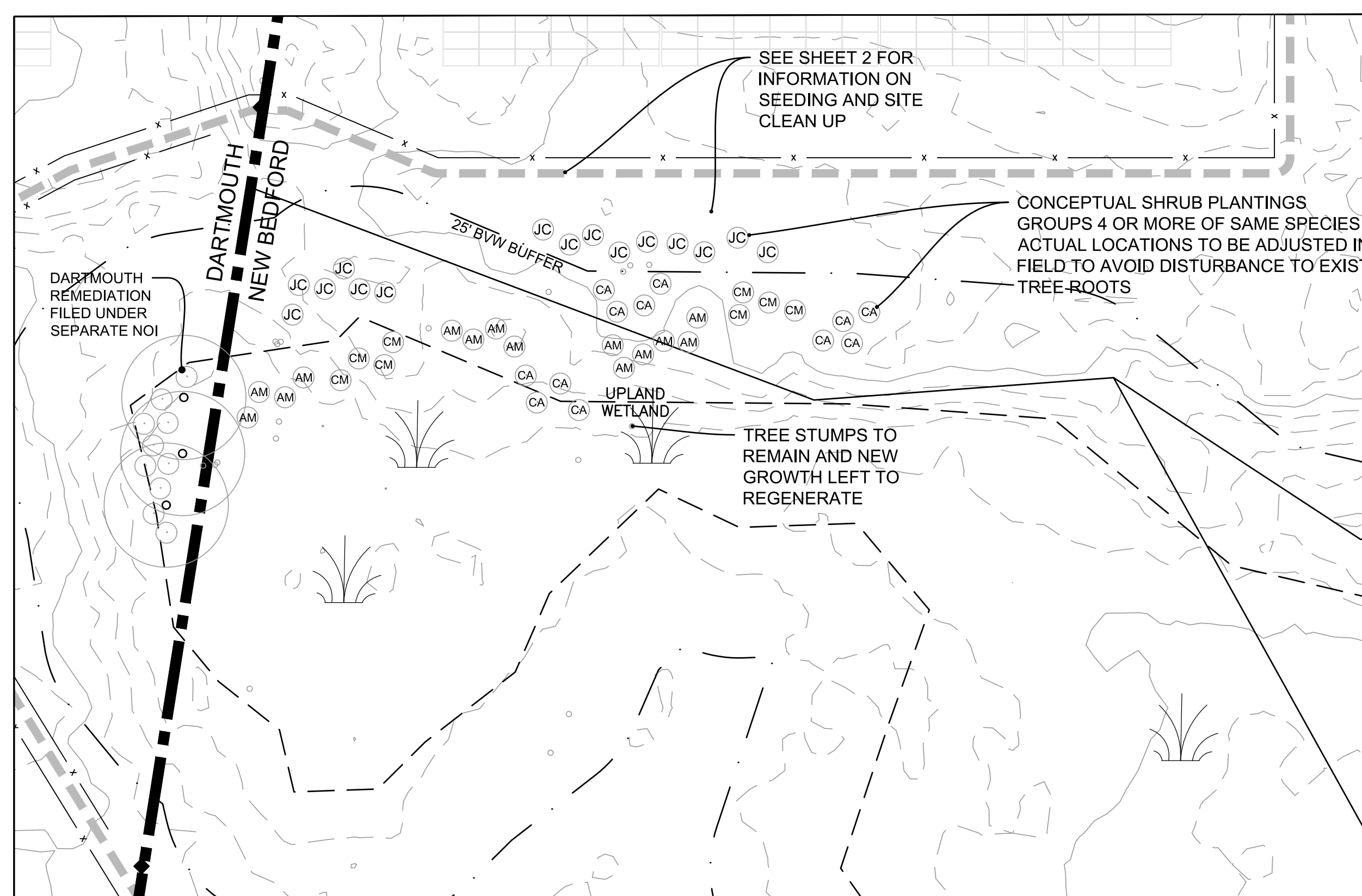


WOOD GRINDING WINDROW
NOT TO SCALE

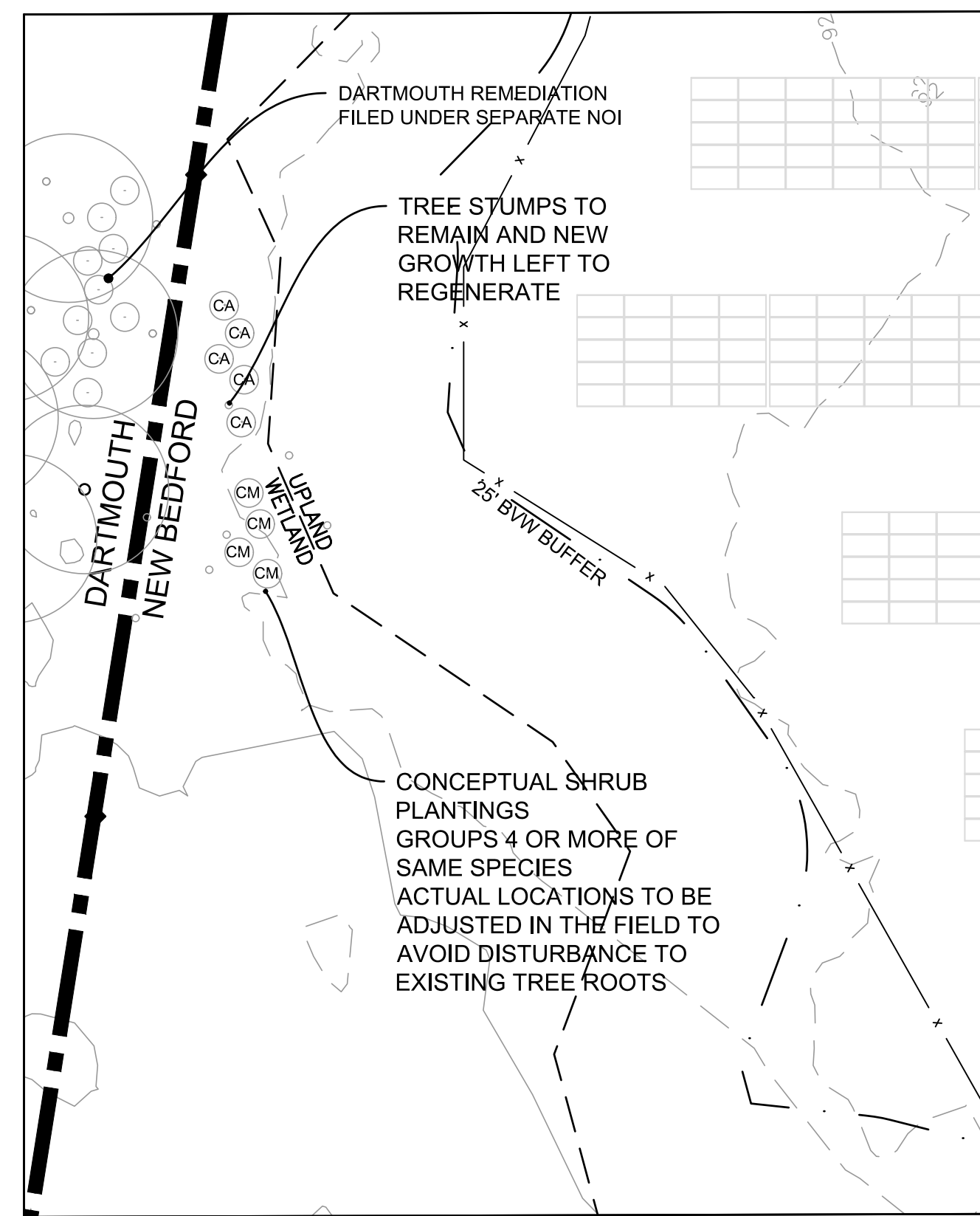
DRAWING TITLE SITE CLEAN UP PLAN		SCALE: 1"=80'
PROJECT PROPOSED VEGETATION REMEDIATION PLAN JOHN VERTENTE BOULEVARD NEW BEDFORD, MASSACHUSETTS		DATE: 6/22/2022
CLIENT KEARSARGE SOLAR RE LLC		DRAWN BY: JAG
DESIGNED BY: RJR		CHECKED BY: RJR
APPROVED BY: RJR		SHEET NO. 2
• CIVIL ENGINEERING • LAND SURVEYING • ENVIRONMENTAL ASSESSMENT		PROJECT NO. 2779-01-01
PRIME ENGINEERING P.O. BOX 1088 350 BEDFORD ST. LAKEVILLE, MA 02347 TEL: 508.947.0050 FAX: 508.947.2004		



VIEW 3A
SCALE: 1"=20'



VIEW 3B
SCALE: 1"=20'



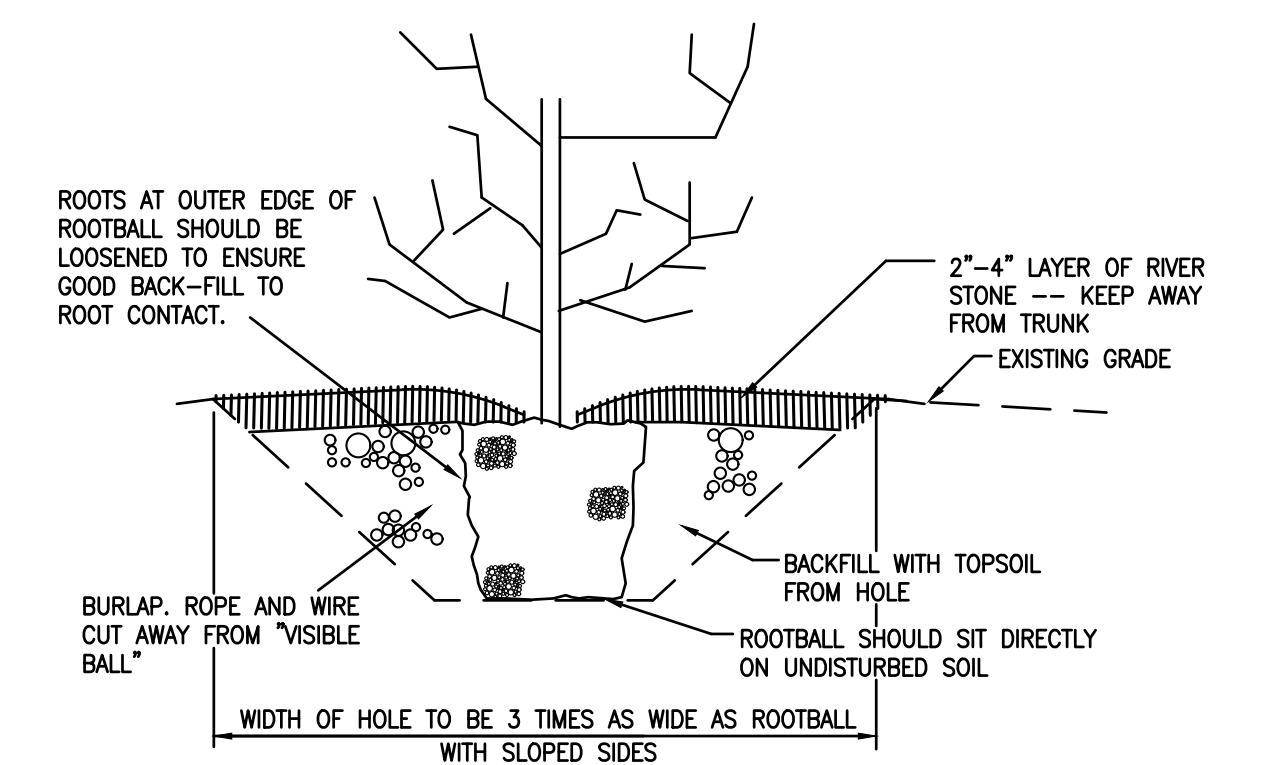
VIEW 3C
SCALE: 1"=20'

GENERAL VEGETATION REMEDIATION NOTES:

- SEE WORK SCHEDULE BELOW. PLANTING WILL OCCUR DURING THE GROWING SEASON. THE GROWING SEASON FOR BRISTOL COUNTY (SOUTHERN) ACCORDING TO THE MASSACHUSETTS DEPARTMENT OF ENVIRONMENTAL PROTECTION INLAND WETLAND REPLICATION GUIDELINES IS APRIL 24TH TO OCTOBER 11TH.
- ALL PLANTINGS SHALL COME FROM A REPUTABLE PLANT NURSERY OR GARDEN CENTER WITH RECEIPT OF RECEIVING ALL PLANT MATERIAL SPECIFIED IN THIS RESTORATION PLAN AND FOR THE RECEIPT TO BE SUBMITTED TO THE CONSERVATION COMMISSION.
- SEE PLANTING SCHEDULE FOR NUMBER OF SPECIES. THE LOCATIONS SHOWN ON THE PLAN ARE APPROXIMATE AND SHOULD BE ADJUSTED ON SITE, TO AVOID DAMAGE TO EXISTING TREE ROOTS AND INCREASE THE SUCCESSFUL ESTABLISHMENT OF PLANTINGS.
- PRIOR TO SHRUB PLANTING, PLANTS SHALL BE "LAYED OUT" IN GROUPS OF THE SAME SPECIES (5 OR 10 PLANTS PER GROUP).
- ONCE HOLES ARE DUG FOR EACH INDIVIDUAL TREE PLANTING, 1 PART ORGANIC COW MANURE AND 2 PARTS ORGANIC PEAT SHALL BE PLACED IN THE HOLE TO PROVIDE NUTRIENTS TO THE NEW PLANTS.
- ALL BURLAP SHALL BE REMOVED FROM PLANT SPECIMENS AND ROOTS SHALL BE TEASED APART GENTLY. PLANTS CAN THEN BE PLACED IN THEIR HOLES AND COVERED WITH LOAM UP TO THE BASE OF THE PLANT.
- ONCE ALL PLANTING IS DONE, A REPORT WITH PICTURES OF THE OUTCOME SHALL BE SUBMITTED TO THE CONSERVATION COMMISSION.
- THROUGHOUT THE VEGETATION REMEDIATION PROCESS THE NUMBER AND PLACEMENT OF PLANTINGS AT THE REPLICATION LOCATION MAY BE MODIFIED DEPENDING ON UNANTICIPATED CONDITIONS, IF SO RECOMMENDED BY THE CONSERVATION AGENT.
- THE VEGETATION REMEDIATION PROCESS SHALL BE MONITORED BY A WETLAND SCIENTIST RETAINED BY THE OWNER AND BY THE DARTMOUTH CONSERVATION AGENT. THE REMEDIATED AREA SHALL BE INSPECTED BY A WETLAND SCIENTIST IN THE SPRING OF 2023 AND THE SPRING OF 2024 AND THE CONDITION OF THE REMEDIATED AREAS SHALL BE REPORTED TO THE DARTMOUTH CONSERVATION COMMISSION.

PROPOSED CONSTRUCTION SCHEDULE

- SUMMER 2022-**
FELLED TREES TO BE REMOVED OFFSITE OR CHIPPED AND USED FOR WINDROWS. DISTURBED OR SPARSE AREAS OF HERBACIOUS GROWTH TO BE SEEDDED.
- FALL 2022-**
PROPOSED PLANTINGS TO BE INSTALLED NO LATER THAN OCTOBER 11TH, 2022. DISTURBED OR SPARSE AREAS OF HERBACIOUS GROWTH TO BE SEEDDED.
- SPRING 2023-**
FIRST MONITORING REPORT DUE.
- FALL 2023-**
OCTOBER 11TH, 2023 IS THE DEADLINE FOR ANY PLANT REPLACEMENT OR RESEEDING IDENTIFIED IN THE SPRING 2023 MONITORING REPORT.
- SPRING 2024-**
SECOND MONITORING REPORT DUE. CONSERVATION COMMISSION TO ISSUE AN CERTIFICATE OF COMPLIANCE IF REQUIREMENTS HAVE BEEN MET.



CONTAINER GROWN SHRUB AND TREE PLANTING DETAIL
NOT TO SCALE

VEGETATION REMEDIATION PLANTING SCHEDULE

SYMBOL	LATIN NAME	COMMON NAME	WETLAND INDICATOR STATUS	MIN. SIZE	QUANTITY
AM	ARONIA MELANOCARPA	BLACK CHOKEBERRY	FAC	18"-24" HT.	50
CA	CEANOTHUS AMERICANUS	NEW JERSEY TEA	FACU-	18"-24" HT.	50
CM	CORBY'S AMOMUM	SILKY DOGWOOD	FACW	18"-24" HT.	50
JC	JUNIPERUS COMMUNIS	COMMON JUNIPER	FAC	18"-24" HT.	50

DRAWING TITLE PROPOSED VEGETATION REMEDIATION PLAN				SCALE: 1"=80'
PROJECT PROPOSED VEGETATION REMEDIATION PLAN JOHN VERTENTE BOULEVARD NEW BEDFORD, MASSACHUSETTS				DATE: 6/22/2022
CLIENT KEARSARGE SOLAR RE LLC				DRAWN BY: JAG
DESIGNED BY: RJR				CHECKED BY: RJR
APPROVED BY: RJR				SHEET NO. 3
• CIVIL ENGINEERING • LAND SURVEYING • ENVIRONMENTAL ASSESSMENT				PROJECT NO. 2779-01-01

P.O. BOX 1088
 350 BEDFORD ST.
 LAKEVILLE, MA 02347
 TEL: 508.947.0050
 FAX: 508.947.2004

PRIME ENGINEERING INC.