

CURRENT DESIGN:

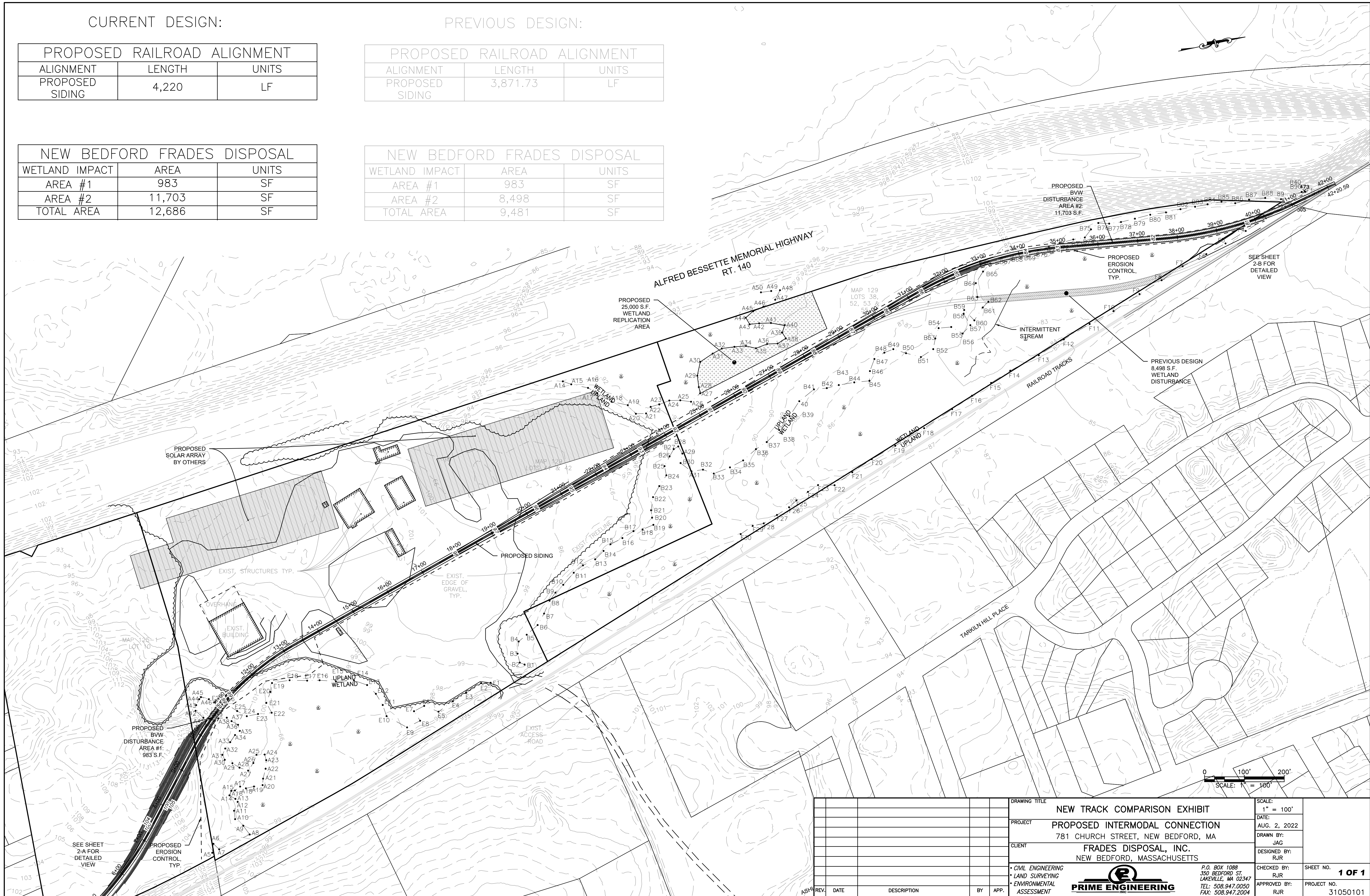
PREVIOUS DESIGN:

PROPOSED RAILROAD ALIGNMENT		
ALIGNMENT	LENGTH	UNITS
PROPOSED SIDING	4,220	LF

PROPOSED RAILROAD ALIGNMENT		
ALIGNMENT	LENGTH	UNITS
PROPOSED SIDING	3,871.73	LF

NEW BEDFORD FRADES DISPOSAL		
WETLAND IMPACT	AREA	UNITS
AREA #1	983	SF
AREA #2	11,703	SF
TOTAL AREA	12,686	SF

NEW BEDFORD FRADES DISPOSAL		
WETLAND IMPACT	AREA	UNITS
AREA #1	983	SF
AREA #2	8,498	SF
TOTAL AREA	9,481	SF



DRAWING TITLE				NEW TRACK COMPARISON EXHIBIT		SCALE: 1" = 100'	
PROJECT				PROPOSED INTERMODAL CONNECTION 781 CHURCH STREET, NEW BEDFORD, MA		DATE: AUG. 2, 2022	
CLIENT				FRADES DISPOSAL, INC. NEW BEDFORD, MASSACHUSETTS		DRAWN BY: JAG	
DESIGNED BY:				RJR		DESIGNED BY: RJR	
CHECKED BY:				RJR		CHECKED BY: RJR	
APPROVED BY:				RJR		APPROVED BY: RJR	
SHEET NO.				1 OF 1		PROJECT NO. 31050101	

P.O. BOX 1088  
 350 BEDFORD ST.  
 LAKEVILLE, MA 02347  
 TEL: 508.947.0050  
 FAX: 508.947.2004

CIVIL ENGINEERING  
 LAND SURVEYING  
 ENVIRONMENTAL ASSESSMENT