

Existing Sign



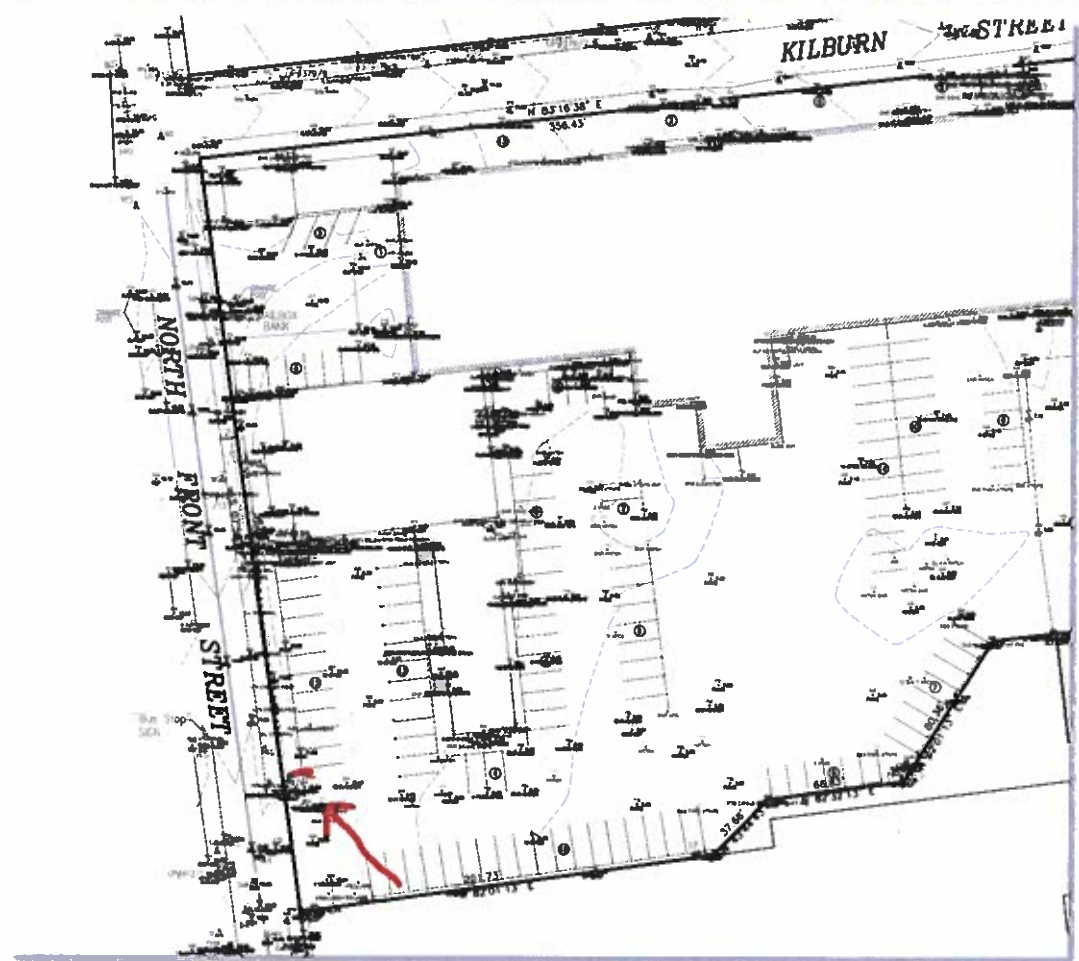


City of New Bedford
Massachusetts

Map: 079

Final Year 2019
The Annual Map and Parcel List
and Assessed Parcel List

Map Prepared By
City of New Bedford
Department of
Management Information Systems
January 2019



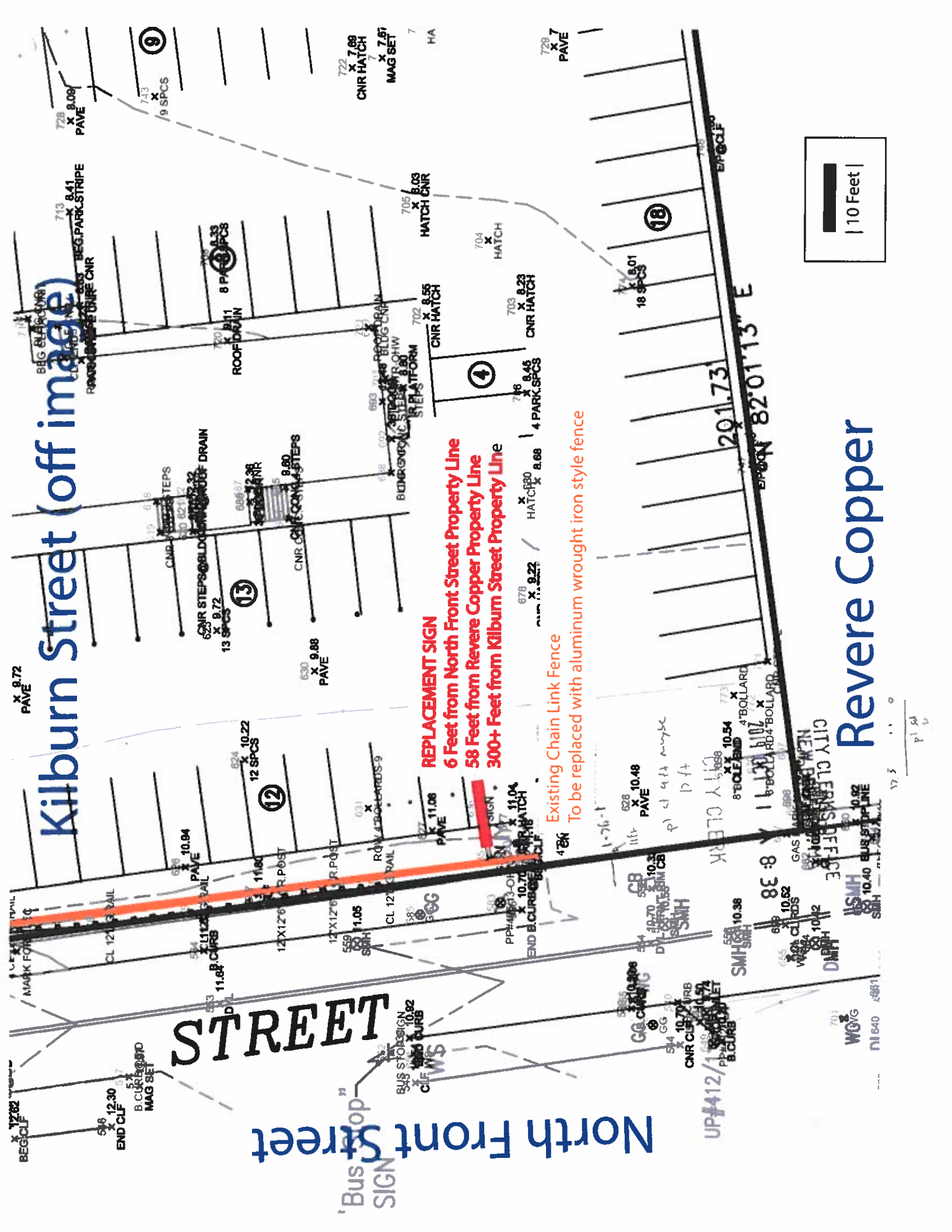
Kilburn Street (off image)

North Front Street

Revere Copper

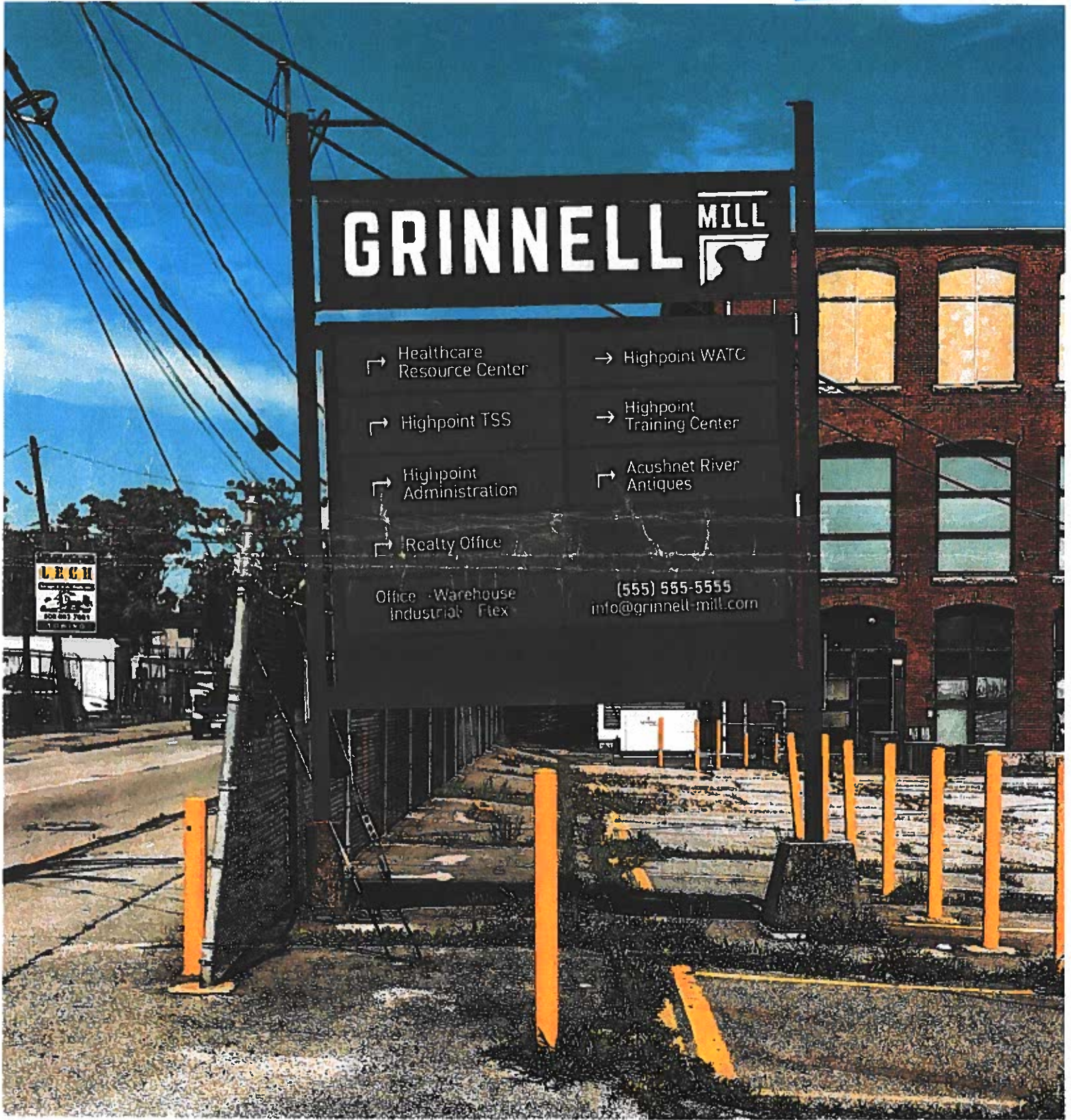
REPLACEMENT SIGN
6 Feet from North Front Street Property Line
58 Feet from Revere Copper Property Line
300+ Feet from Kilburn Street Property Line

Existing Chain Link Fence
To be replaced with aluminum wrought iron style fence



*Proposed
S.9W BOARD*

RECEIVED
AUG - 7 2019



96, 104, 108 NORTH FRONT STREET

GRINNELL

↪ Healthcare
Resource Center

→ Highpoint WATC

↪ Highpoint TSS

→ Highpoint
Training Center

↪ Highpoint
Administration

↪ Acushnet River
Antiques

↪ Realty Office

Office · Warehouse
Industrial · Flex

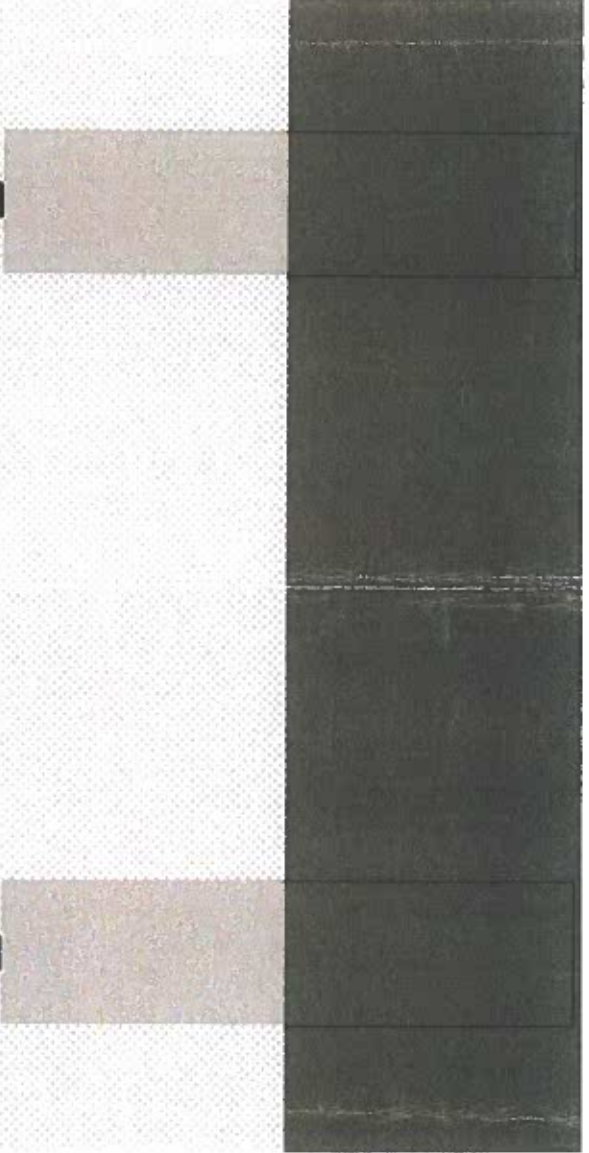
(555) 555-5555
info@grinnell-mill.com

RECEIVED
AUG - 7 2019
BY

16, 104, 108
North Front Street

GRINNELL MILL

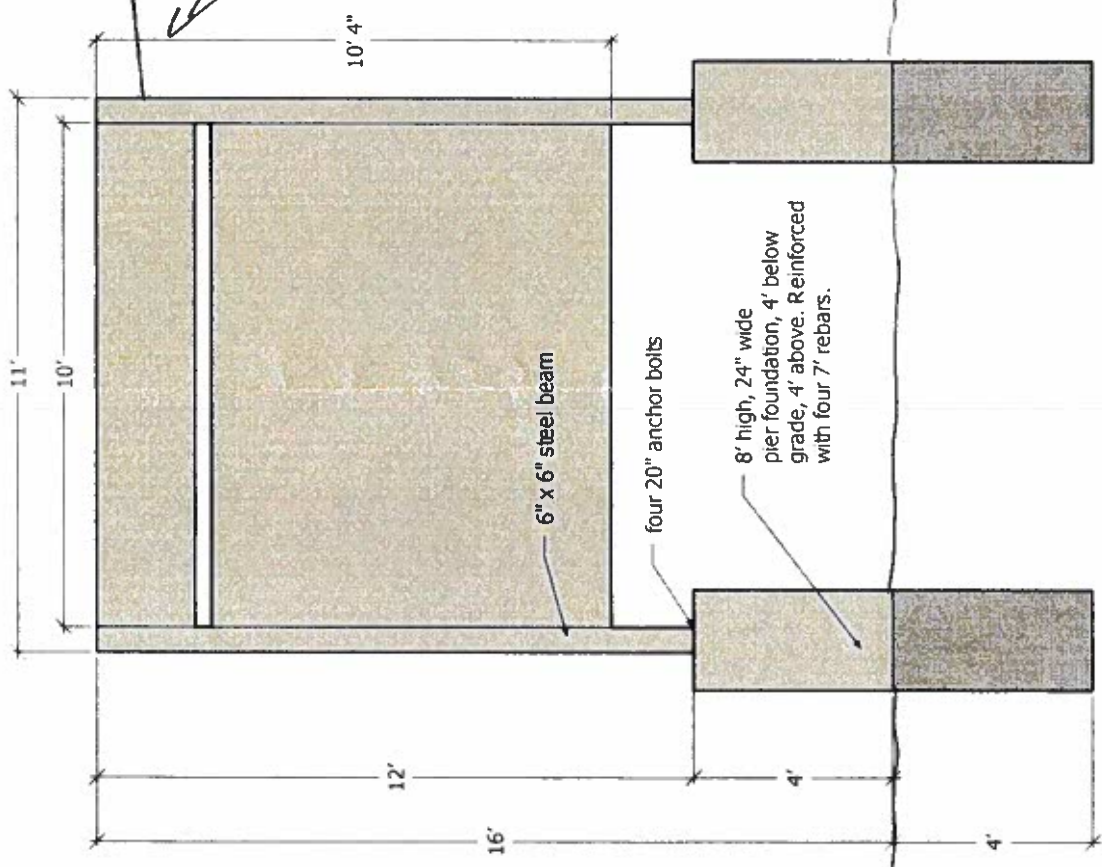
Healthcare Resource Center	Highpoint WATC
Highpoint TSS	Highpoint Training Center
Highpoint Administration	Acushnet River Antiques
Realty Office	
Office Warehouse Industrial Flex	(555) 555-5555 info@grinnell-mill.com

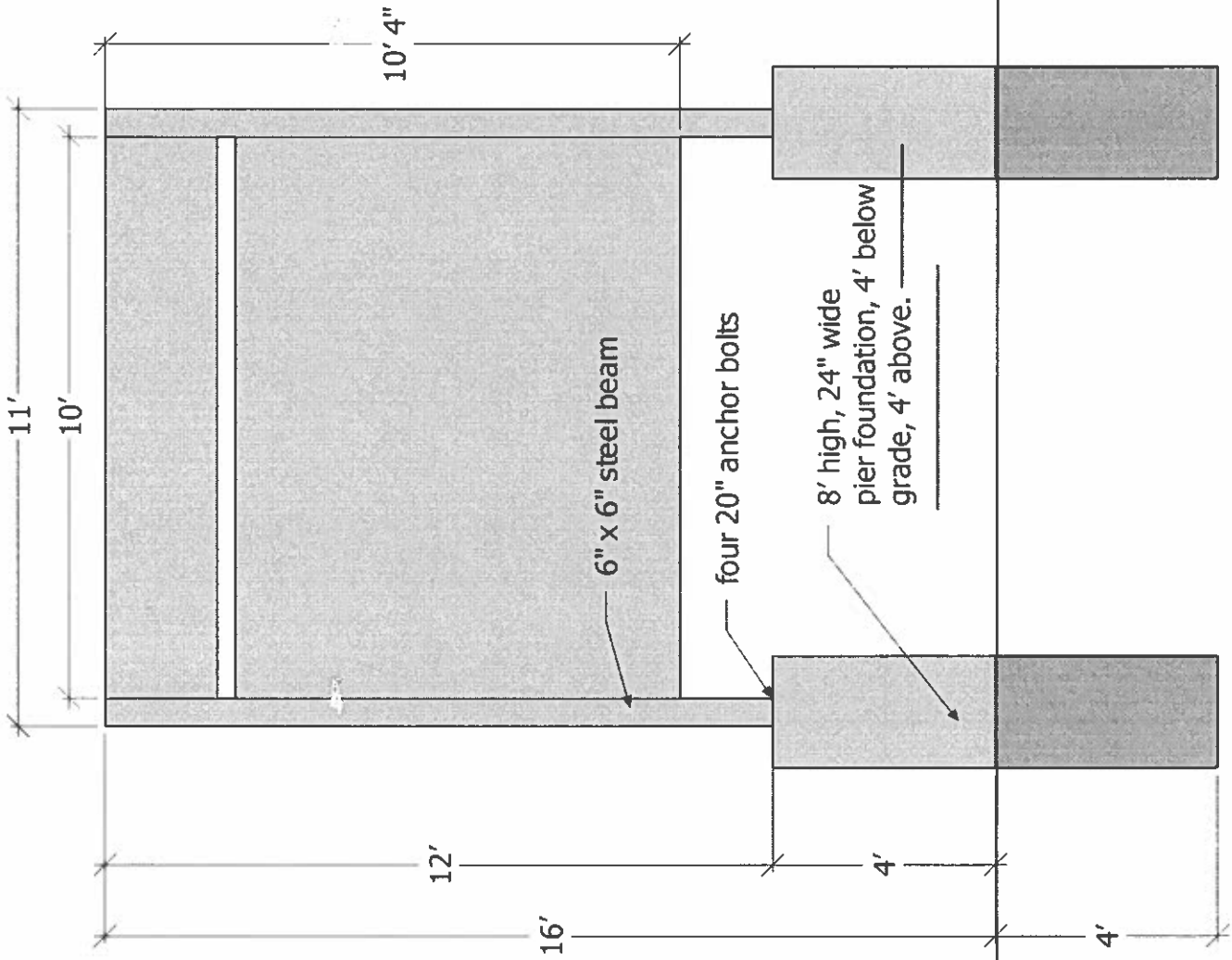


104 North Front Street

RECEIVED
AUG 02 2019
BY

ADDRESS
96, 104, 108
North Front Street





Materials:

1. Painted Steel Posts
2. Concrete pier foundations, with exposed concrete painted.
3. Painted plywood sign backer-board with aluminum graphic panels.

Sign Area: 103 Square Feet

Set back: 6