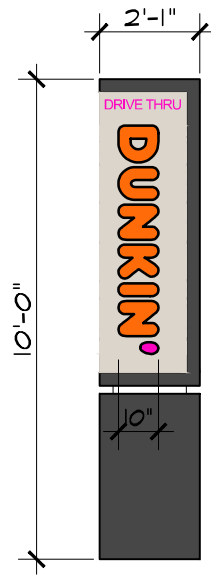


### SIGN CODE:

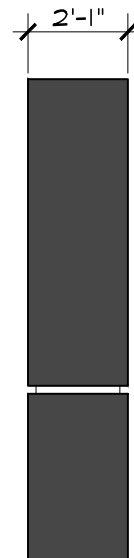
1 SF SIGN AREA = 1 LINEAR FT FRONTAGE  
SIGN SHALL NOT EXCEED 25 SF IN AREA  
10'-0" MAX FROM GROUND TO BOT OF SIGN  
15'-0" MAX FROM GROUND TO TOP OF SIGN

### SIGN SCHEDULE

QTY	LOCATION	OVERALL DIMENSIONS	LETTERS	AREA
1	PYLON SIGN	2'-1" L x 10'-0" H x 2'-1" D	10" H	25 SF



FRONT VIEW



SIDE VIEW

## PROPOSED PYLON SIGN

SCALE: 1/4" = 1'-0"

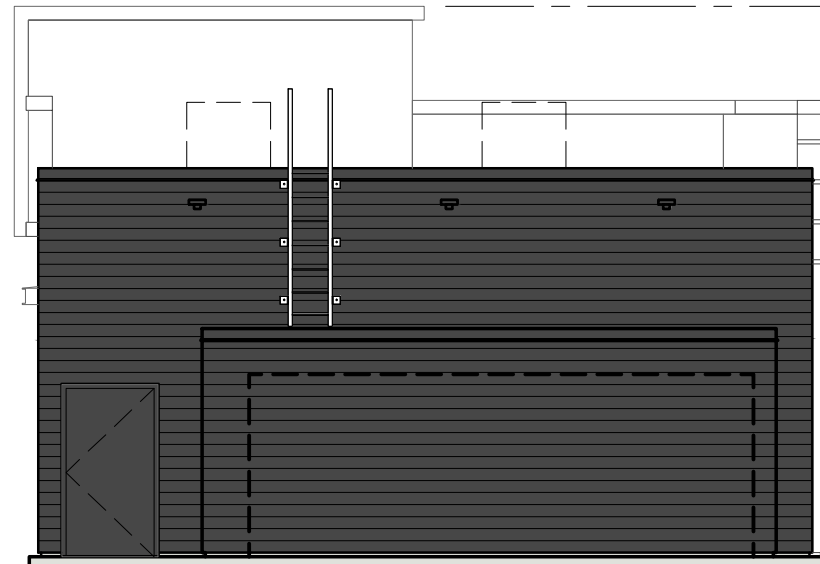


AHARONIAN  
& ASSOCIATES, INC.  
Architects

401-232-5010  
www.arch-eng.com



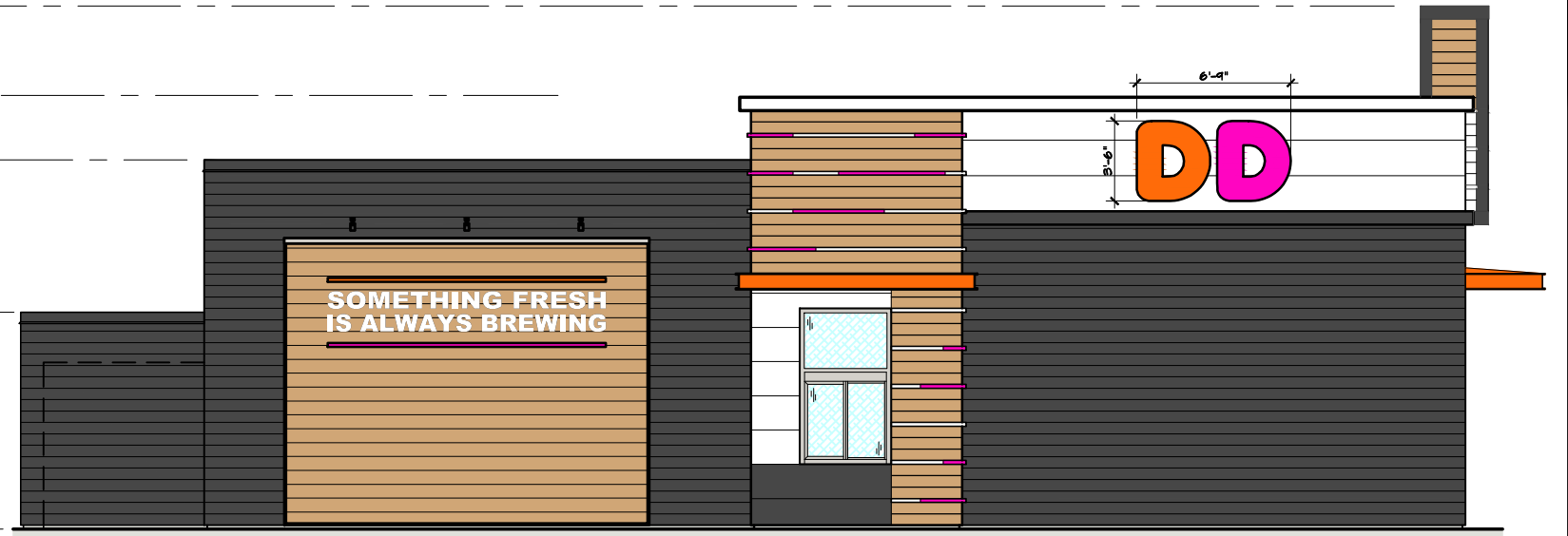
970 ASHLEY BLVD  
NEW BEDFORD, MA  
NOVEMBER 12, 2018



**PROPOSED NORTH ELEVATION**

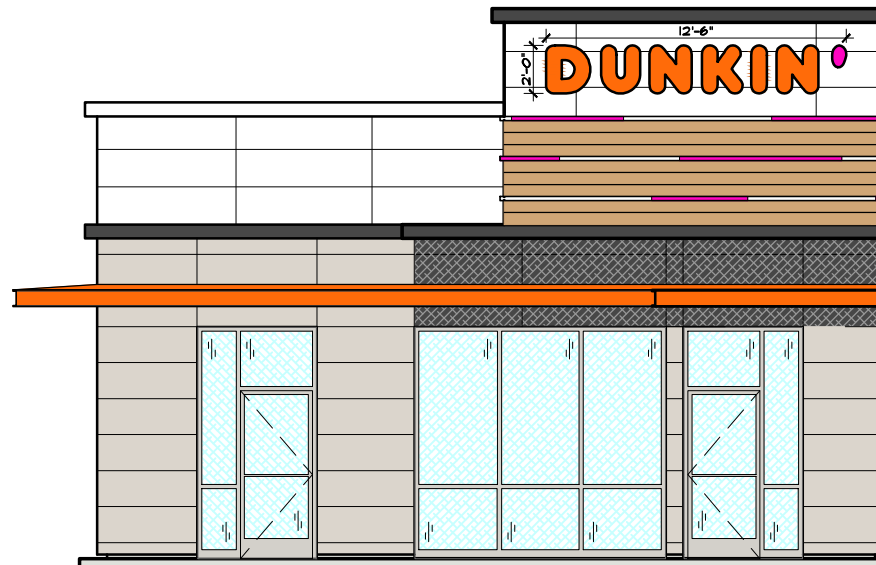
SCALE: 1/8"=1'-0"

- TOP MONOLITH  
EL = 22'-11" AF
- TOP UPPER PARAPET  
EL = 19'-0" AF
- TOP LOWER PARAPET  
EL = 16'-2" AF
- TOP WALK-IN BOX  
ENCLOSURE  
EL = 9'-0"
- TOP SLAB  
REF EL = 0'-0"



**PROPOSED WEST ELEVATION**

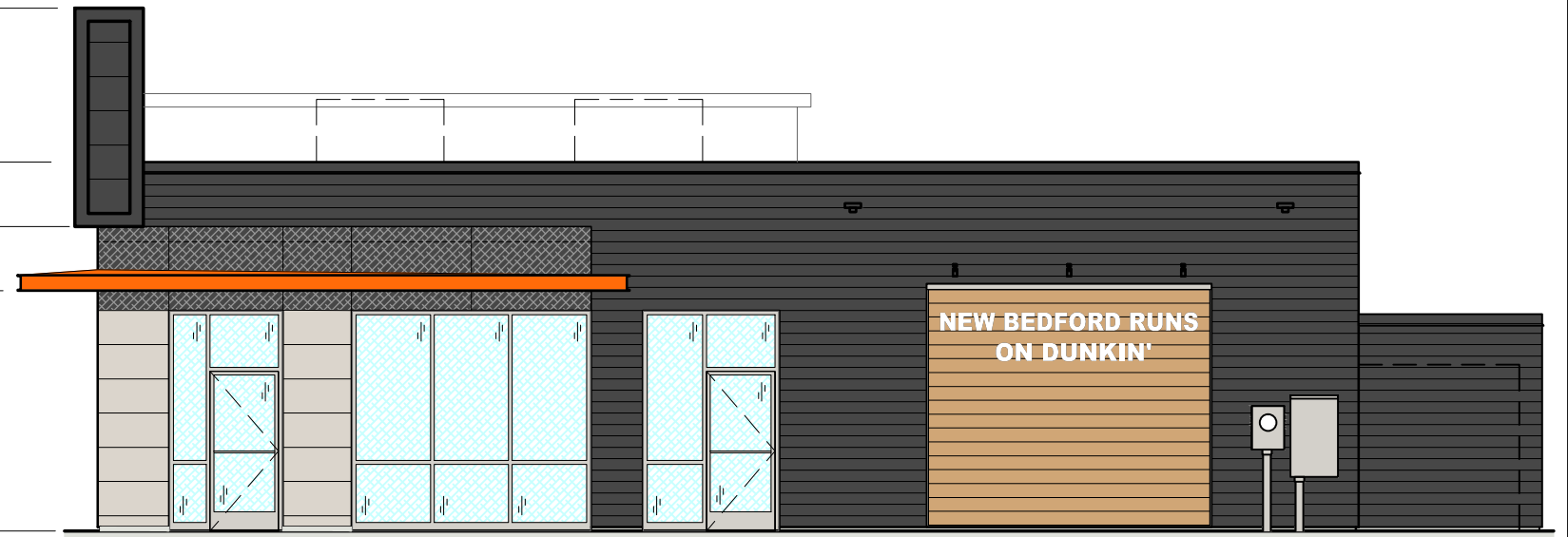
SCALE: 1/8"=1'-0"



**PROPOSED SOUTH ELEVATION**

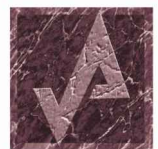
SCALE: 1/8"=1'-0"

- TOP MONOLITH  
EL = 22'-11" AF
- TOP UPPER PARAPET  
EL = 19'-2" AF
- TOP LOWER PARAPET  
EL = 16'-2" AF
- BOT CHARCOAL BAND  
EL = 13'-4" AF
- BOT ORANGE BAND  
EL = 10'-6" AF
- TOP SLAB  
REF EL = 0'-0"



**PROPOSED EAST ELEVATION**

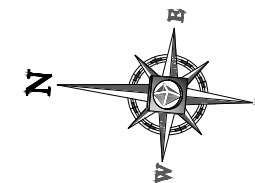
SCALE: 1/8"=1'-0"



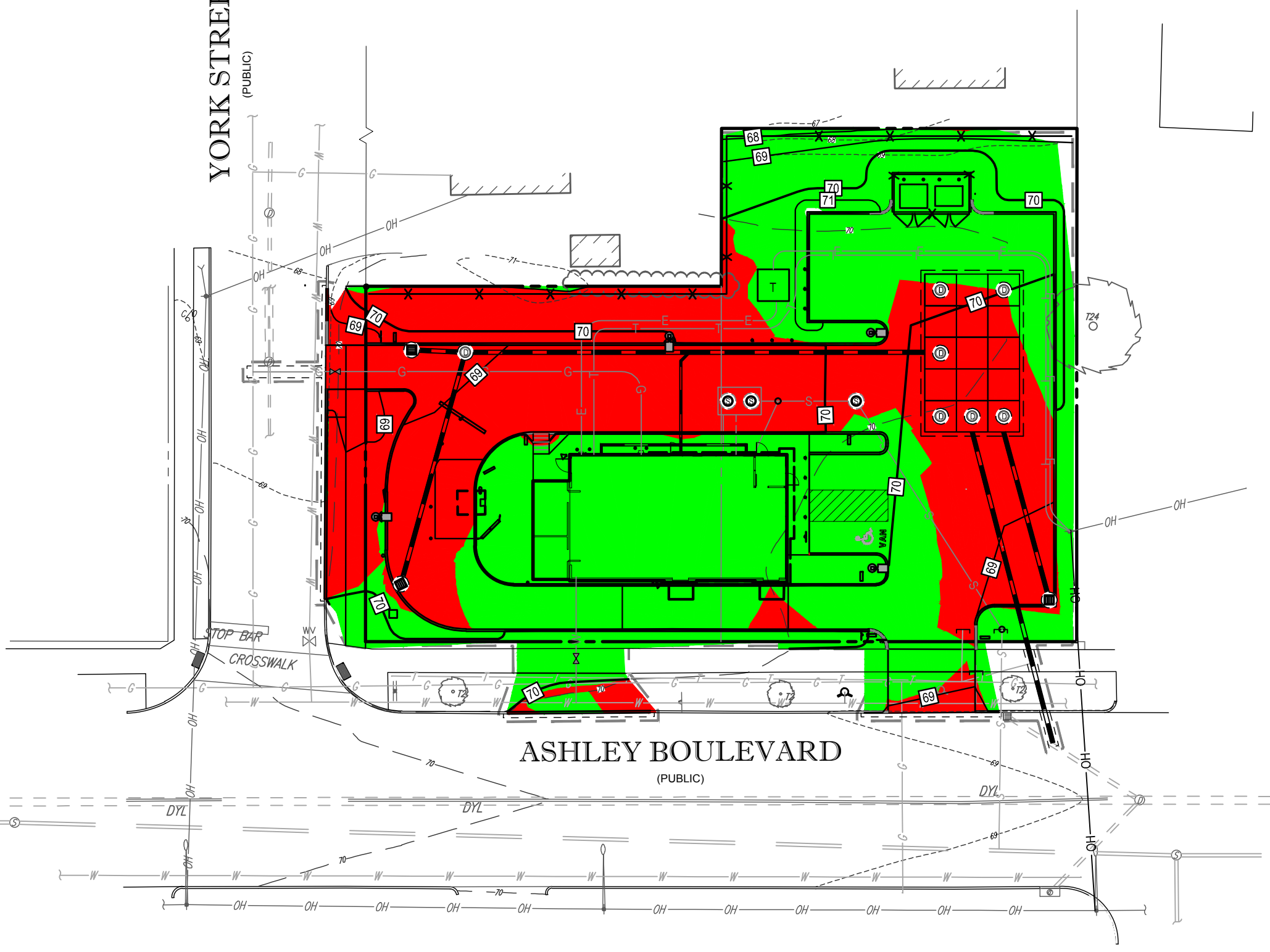
AHARONIAN  
& ASSOCIATES, INC.  
Architects  
401-232-5010  
www.arch-eng.com



970 ASHLEY BLVD  
NEW BEDFORD, MA  
DECEMBER 5, 2018



YORK STREET  
(PUBLIC)



Elevations Table			
Number	Minimum Elevation	Maximum Elevation	Color
1	-1.889	0.000	Red
2	0.000	1.602	Green

ASHLEY BOULEVARD  
(PUBLIC)

CUT/FILL EXHIBIT

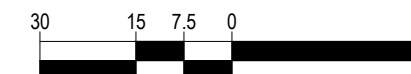
370 ASHLEY BOULEVARD  
NEW BEDFORD, MASSACHUSETTS

DATED: 12/06/2018

PREPARED BY



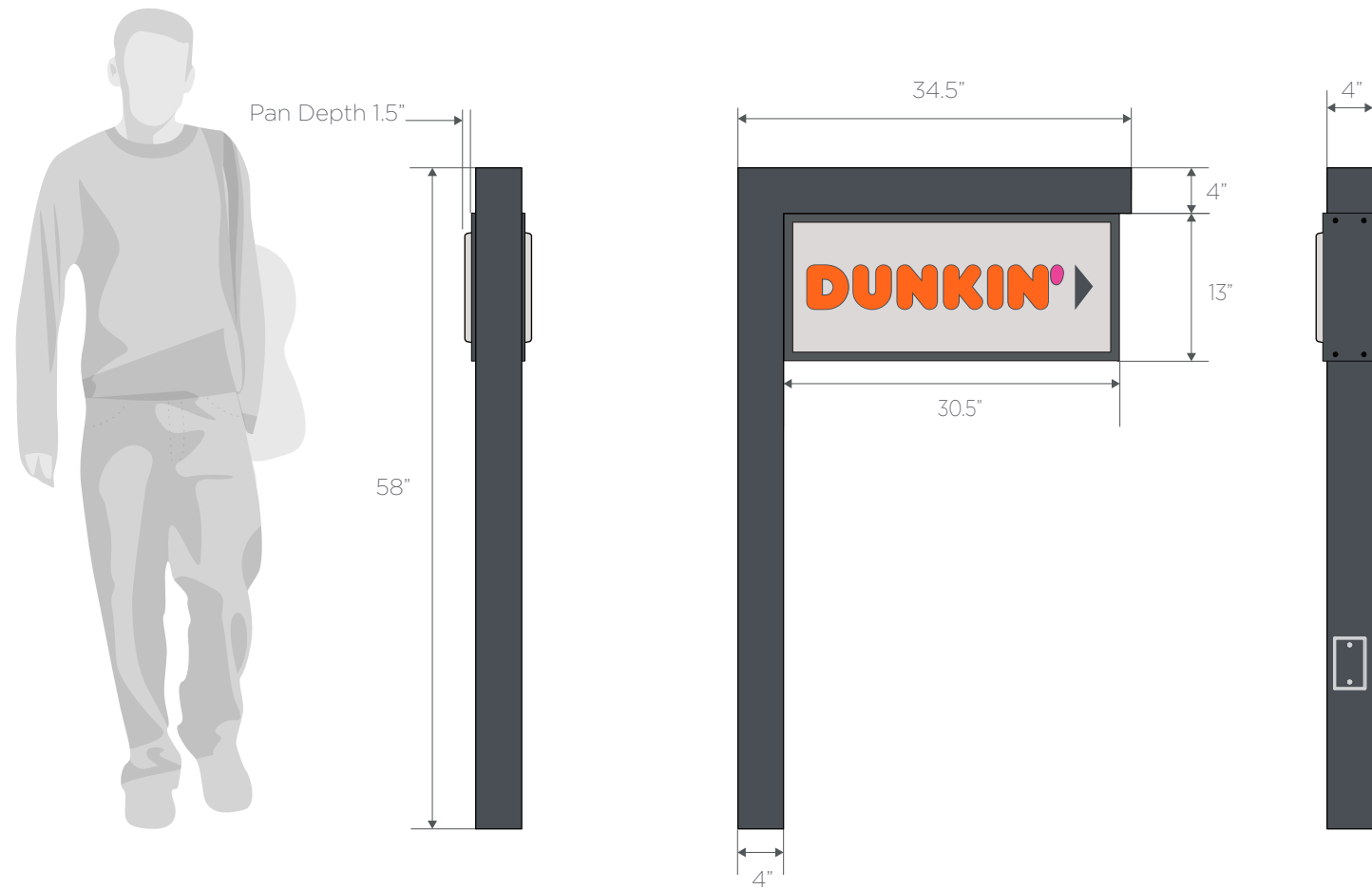
352 TURNPIKE ROAD  
SOUTHBOROUGH, MA 01772  
(508) 480-9900  
www.bohlerengineering.com



1" = 30'

FACE OPTIONS

- A 
- B 
- C 
- D 
- E 
- F 
- G 



PMS	Vinyl / Paint
PMS 165	3M #3630-3123
PMS 219	3M #3630-1379
PMS 7540	3M #-220-41
PMS COOL GRAY 1C	

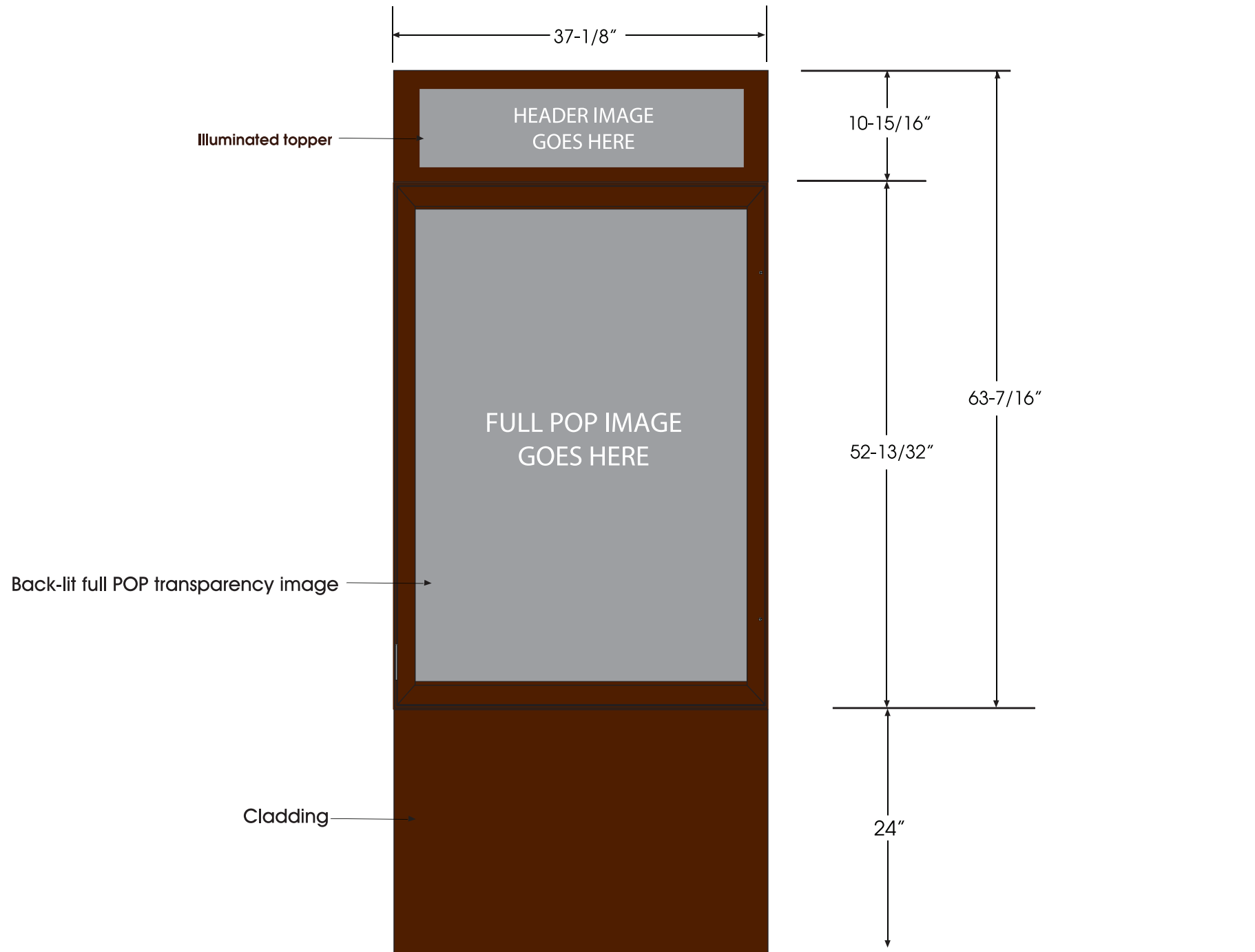
The intent of this drawing is to show a conceptual representation of the proposed signage. Due to variations in printing devices and substrates the finished product may differ slightly from drawings

**DIRECTIONAL SIGN - Fabrication / Install Details**

Date: 10/04/2018  
 Scale: 1/16"  
 Drawn: P.Charboneau

**DD-SS-DS-01**  
 DRAWING NAME:





NOTE: Cabinets, door frames, base shroud and grids ptd.  
Benjamin Moore 2116-10 Night Shade semi-gloss

NOTE: THESE DRAWINGS ARE FOR IMAGE DESIGN GUIDANCE ONLY. IT IS THE SOLE RESPONSIBILITY OF THE ARCHITECTS AND ENGINEERS RETAINED BY THE FRANCHISEE TO PREPARE ALL NECESSARY CONSTRUCTION DOCUMENTS FOR THE PARTICULAR PROJECT LOCATION. DUNKIN' BRANDS, INC., THEIR AGENTS AND EMPLOYEES, DO NOT WARRANT THE ACCURACY OF THESE DRAWINGS, NOR DOES DUNKIN' BRANDS, INC. GUARANTEE THAT THESE DRAWINGS AND THEIR COMPONENTS MEET THE REQUIREMENTS OF ANY FEDERAL, STATE OR LOCAL LAWS, REGULATIONS, ORDINANCES, BUILDING CODES OR INDIVIDUAL SITE CONDITIONS. IT IS THE SOLE RESPONSIBILITY OF THE FRANCHISEE AND OF THE ARCHITECT AND ENGINEERS RETAINED BY THE FRANCHISEE TO ENSURE COMPLIANCE WITH ALL APPLICABLE LAWS, REGULATIONS, ORDINANCES, CODES AND OTHER REQUIREMENTS, INCLUDING, WITHOUT LIMITATION, AMERICANS WITH DISABILITIES ACT.

 **Everbrite**  
4949 South 110th Street  
PO Box 20020  
Greenfield, WI 53220-0020  
414.529.7131

**DUNKIN' BRANDS™**  
[ eatdrinkthink™ ]

Revisions:


DD Rotating  
Preview Board  
(Optional)

FILE

Date: 9/30/09  
Scale: NTS  
Drawn: C HART

DT-6

**PART NUMBER**

DD-DT-MB-NS

**DESCRIPTION**

2 PANEL DD MENUBOARD  
 NO SPEAKER

**CUSTOMER CONTACT**

Michele Inglese

**SALESMAN / PM**

Preston Smith

**DESIGNER**

B.PERRY

**DWG. DATE**

10-16-14

**REV. DATE / REVISION**

06-19-15 10" Depth  
 07-22-15 8" Depth angle cover

**SCALE**

As Noted

**DD DRAWING #**

DT-1

NGSS EXTERIOR MENUBOARD W/O SPEAKER

**DESIGN SPECIFICATIONS ACCEPTED BY:**

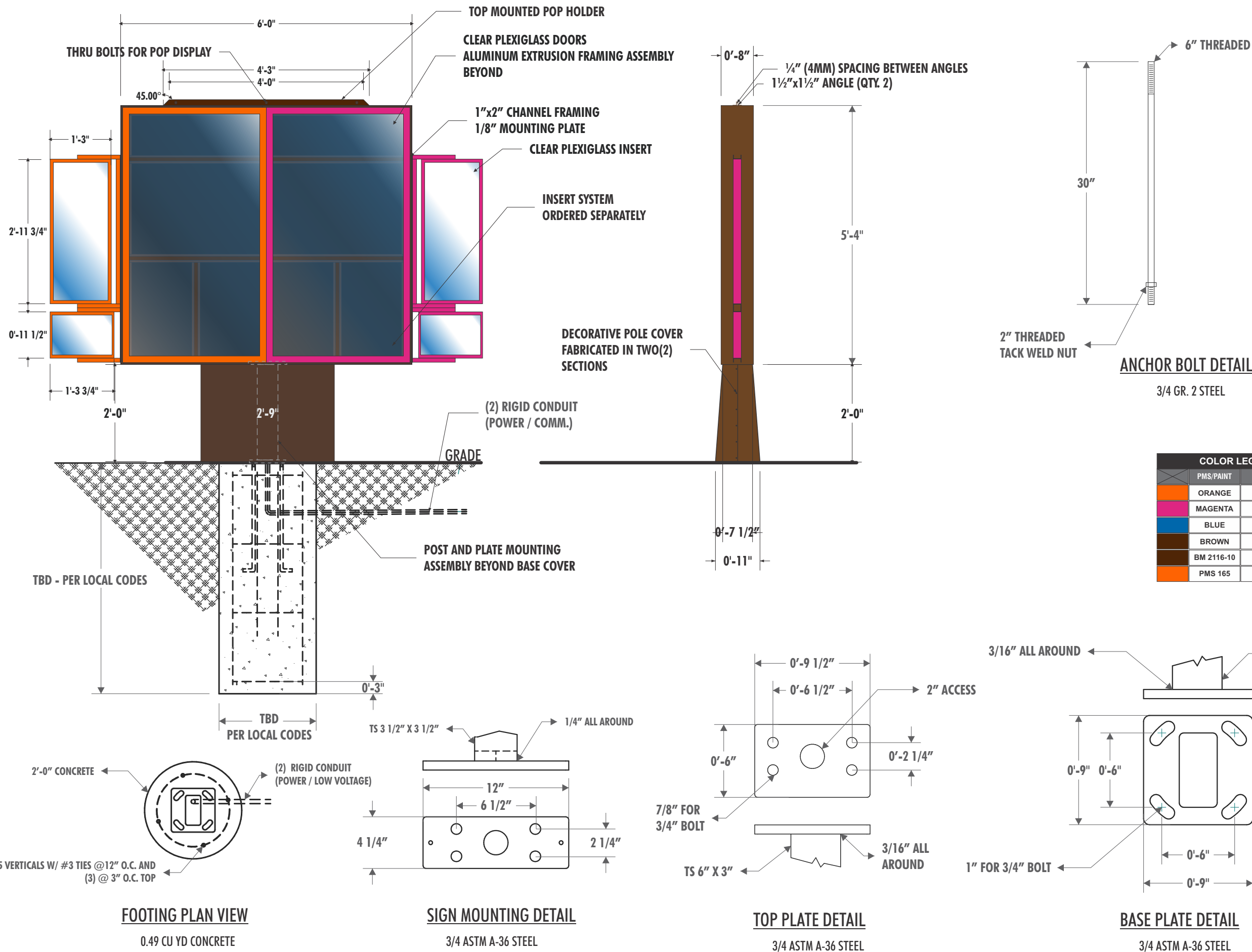
EST: CLIENT:

SLS/PM: LANDLORD:

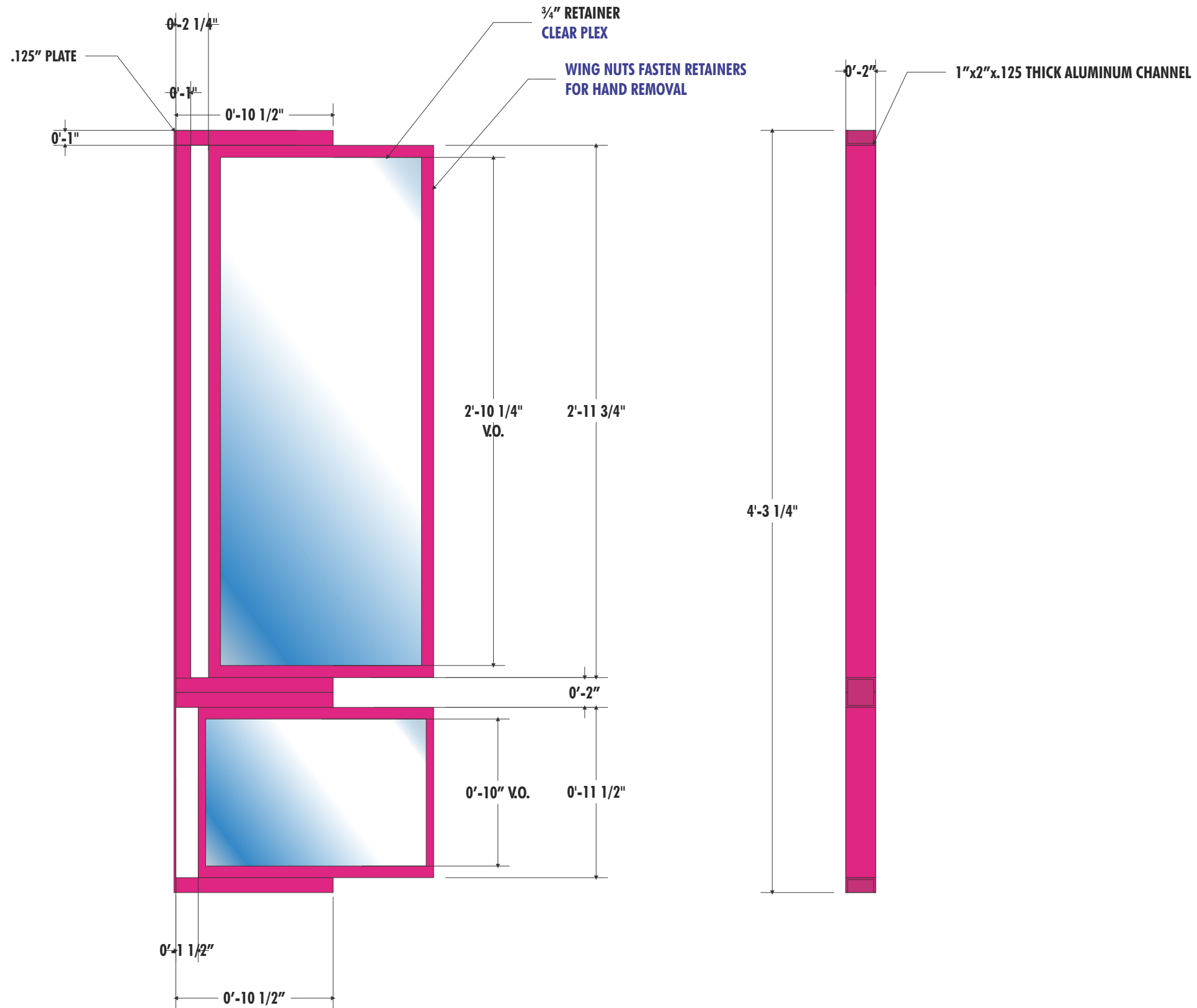
THE INTENT OF THIS DRAWING IS TO SHOW A CONCEPTUAL REPRESENTATION OF THE PROPOSED SIGNAGE. DUE TO VARIATIONS IN PRINTING DEVICES AND SUBSTRATES, THE FINISHED PRODUCT MAY DIFFER SLIGHTLY FROM DRAWING.



BASE PLATE # 1



**NCSS EXTERIOR MENUBOARD W/O SPEAKER - DT-1**



**HILTONDISPLAYS**

106 W. Summit Hill Dr. • Knoxville TN 37902  
 P 800 353 9132 • F 864 242 2204  
 email: dunkinsigns@hiltondisplays.com

**PART NUMBER**

DD-DT-MB-NS

**DESCRIPTION**

2 PANEL DD MENUBOARD  
 NO SPEAKER

**CUSTOMER CONTACT**

Michele Inglese

**SALESMAN / PM**

Preston Smith

**DESIGNER**

B.PERRY

**DWG. DATE**

10-16-14

**REV. DATE / REVISION**

06-19-15 10" Depth

07-22-15 8" Depth angle cover

**SCALE**

As Noted

**DD DRAWING #**

DT-1

NCSS EXTERIOR MENUBOARD W/O SPEAKER

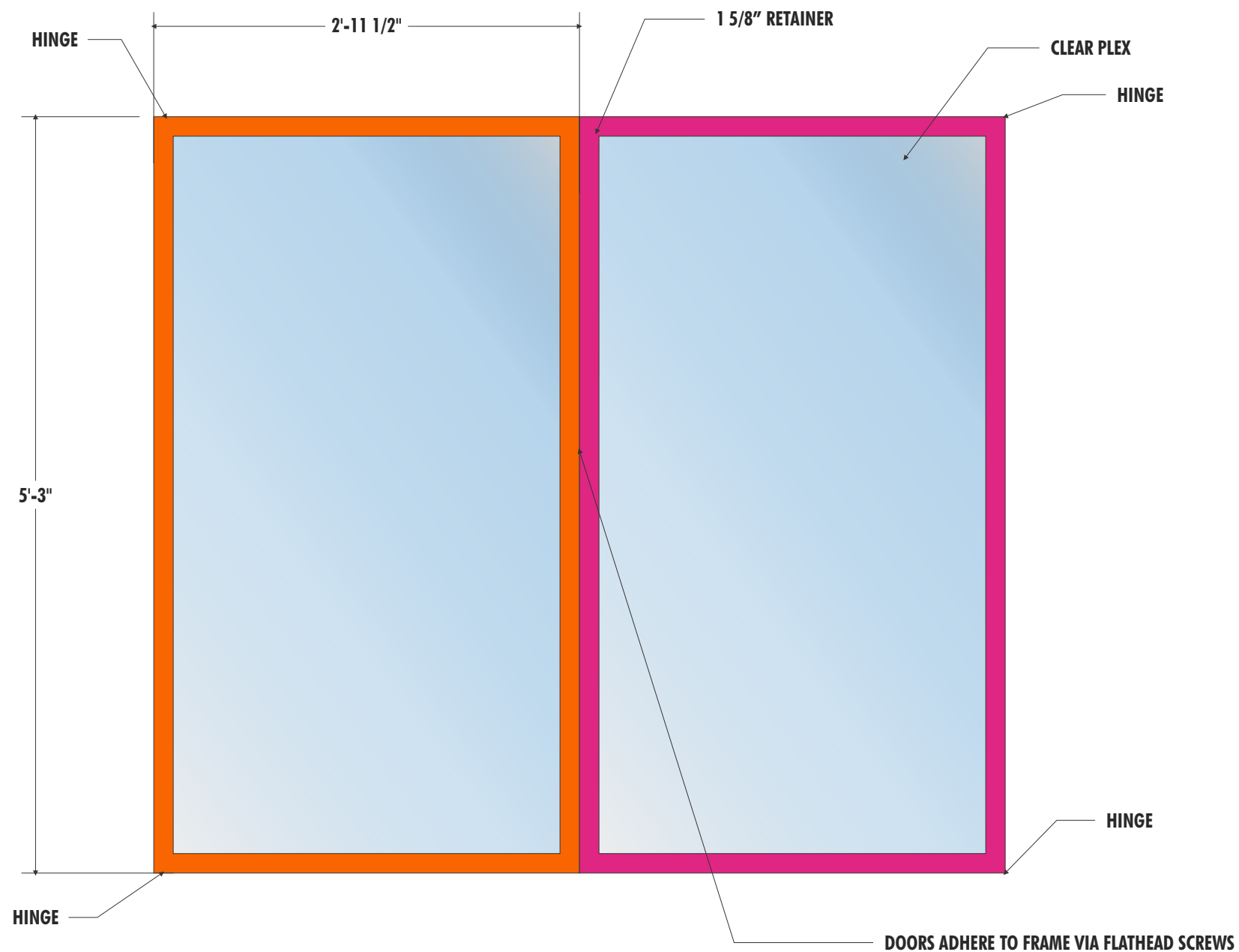
**DESIGN SPECIFICATIONS ACCEPTED BY:**

EST:	CLIENT:
SLS/PM:	LANDLORD:

THE INTENT OF THIS DRAWING IS TO SHOW A CONCEPTUAL REPRESENTATION OF THE PROPOSED SIGNAGE. DUE TO VARIATIONS IN PRINTING DEVICES AND SUBSTRATES, THE FINISHED PRODUCT MAY DIFFER SLIGHTLY FROM DRAWING.



**NCSS EXTERIOR MENUBOARD W/O SPEAKER - DT-1**



**HILTONDISPLAYS**

106 W. Summit Hill Dr. • Knoxville TN 37902  
 P 800 353 9132 • F 864 242 2204  
 email: dunkinsigns@hiltondisplays.com

**PART NUMBER**

DD-DT-MB-NS

**DESCRIPTION**

2 PANEL DD MENUBOARD  
 NO SPEAKER

**CUSTOMER CONTACT**

Michele Inglese

**SALESMAN / PM**

Preston Smith

**DESIGNER**

B.PERRY

**DWG. DATE**

10-16-14

**REV. DATE / REVISION**

06-19-15 10" Depth

07-22-15 8" Depth angle cover

**SCALE**

As Noted

**DD DRAWING #**

DT-1

NCSS EXTERIOR MENUBOARD W/O SPEAKER

**DESIGN SPECIFICATIONS ACCEPTED BY:**

EST: CLIENT:

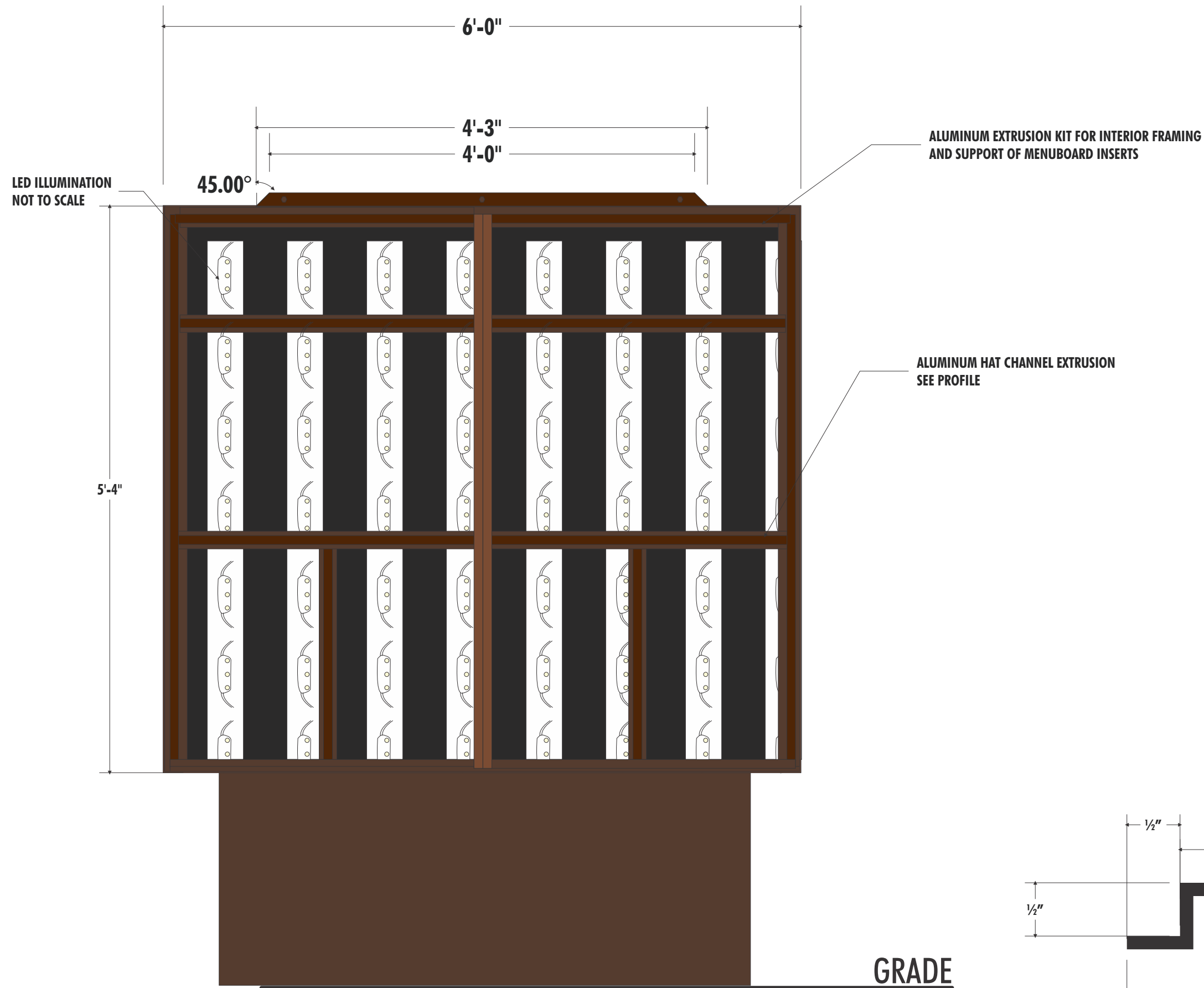
SLS/PM: LANDLORD:

THE INTENT OF THIS DRAWING IS TO SHOW A CONCEPTUAL REPRESENTATION OF THE PROPOSED SIGNAGE. DUE TO VARIATIONS IN PRINTING DEVICES AND SUBSTRATES, THE FINISHED PRODUCT MAY DIFFER SLIGHTLY FROM DRAWING.

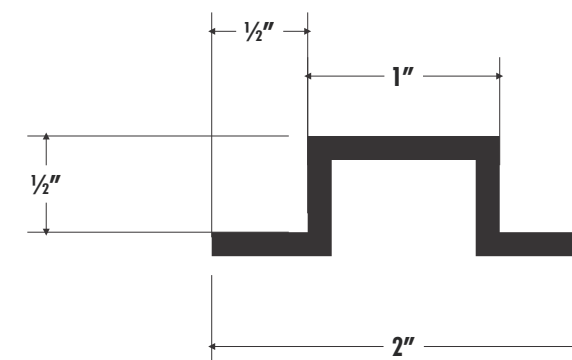




**NCSS EXTERIOR MENUBOARD W/O SPEAKER - DT-1**



COLOR LEGEND	
PMS/PAIN	VINYL
ORANGE	3M 3630-3123
MAGENTA	3M 3630-1379
BLUE	3M 3630-8508
BROWN	3M 3630-59
BM 2116-10	N/A
PMS 165	N/A



**HAT CHANNEL EXTRUSION PROFILE**

**HILTONDISPLAYS**

106 W. Summit Hill Dr. • Knoxville TN 37902  
 P 800 353 9132 • F 864 242 2204  
 email: dunkinsigns@hiltondisplays.com

**PART NUMBER**

DD-DT-MB-NS

**DESCRIPTION**

2 PANEL DD MENUBOARD  
 NO SPEAKER

**CUSTOMER CONTACT**

Michele Inglese

**SALESMAN / PM**

Preston Smith

**DESIGNER**

B.PERRY

**DWG. DATE**

10-16-14

**REV. DATE / REVISION**

06-19-15 10" Depth  
 07-22-15 8" Depth angle cover

**SCALE**

As Noted

**DD DRAWING #**

DT-1

NCSS EXTERIOR MENUBOARD W/O SPEAKER

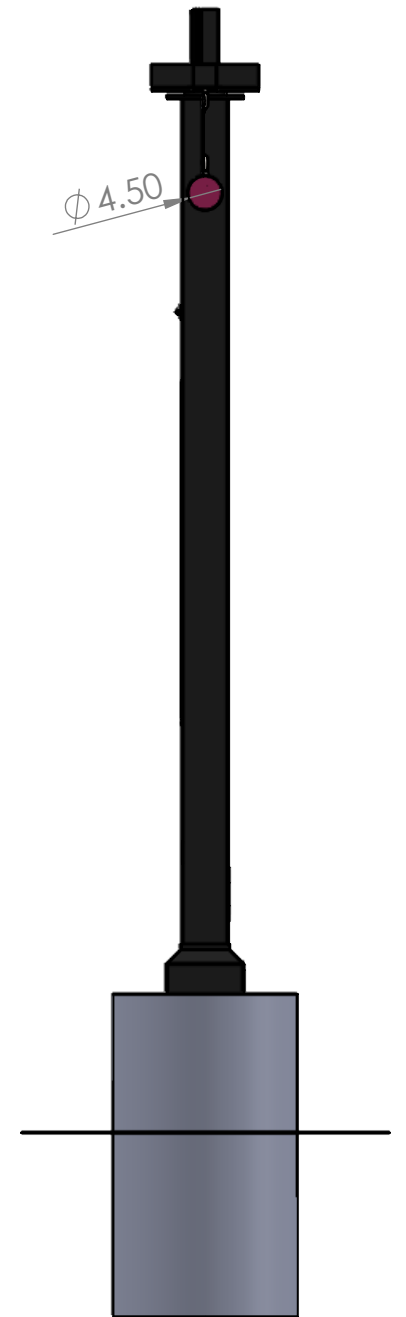
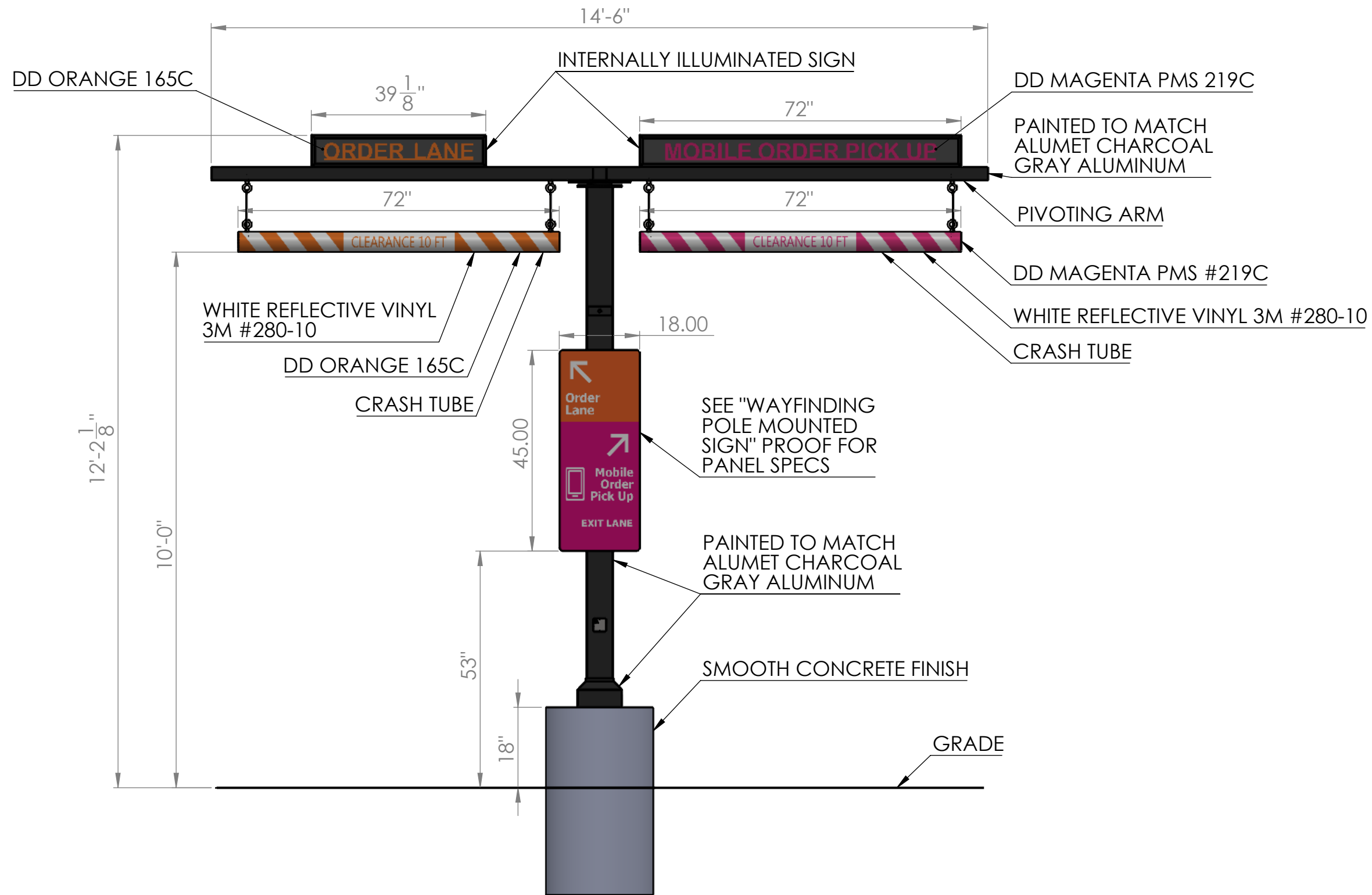
**DESIGN SPECIFICATIONS ACCEPTED BY:**

EST:	CLIENT:
SLS/PM:	LANDLORD:

THE INTENT OF THIS DRAWING IS TO SHOW A CONCEPTUAL REPRESENTATION OF THE PROPOSED SIGNAGE. DUE TO VARIATIONS IN PRINTING DEVICES AND SUBSTRATES, THE FINISHED PRODUCT MAY DIFFER SLIGHTLY FROM DRAWING.


**Underwriters Laboratories Inc.**

DRY	<input type="checkbox"/>
DAMP	<input type="checkbox"/>
WET	<input checked="" type="checkbox"/>



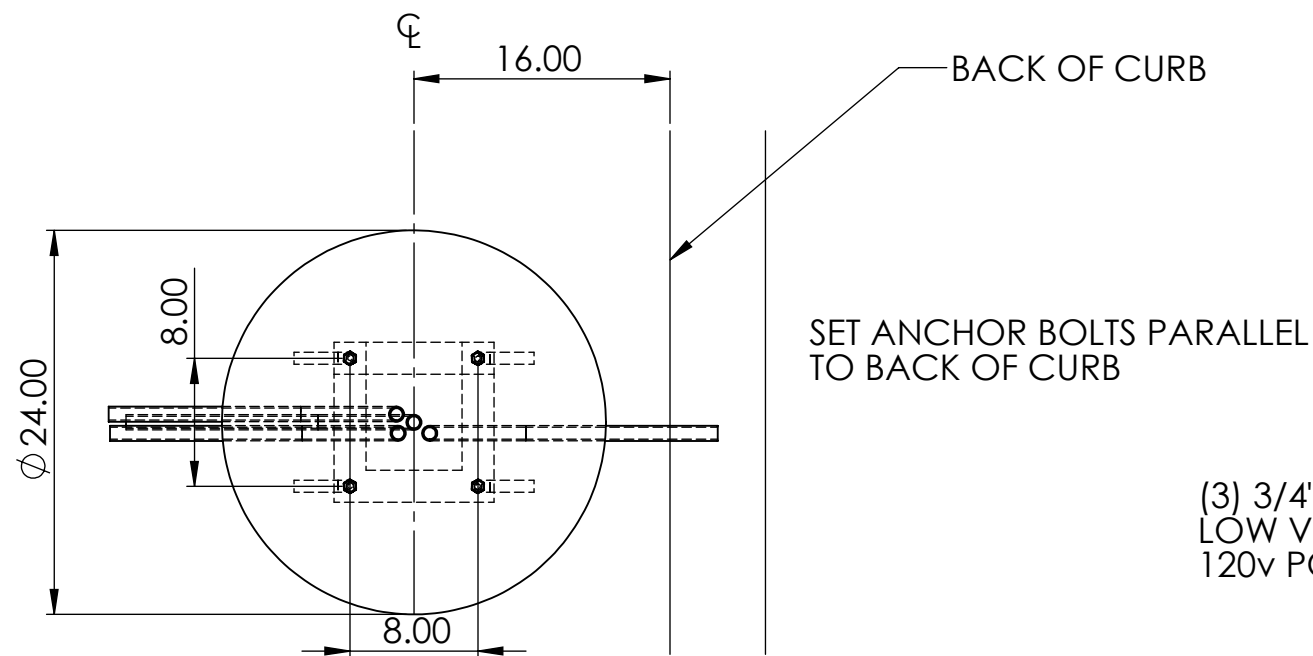
**Uni-Structures, Inc.**

8540 COBB CENTER DR.  
 STE 100 KENNESAW, GA 30152  
 PHONE: (770)-499-2000  
 PHONE: (800)-386-9864

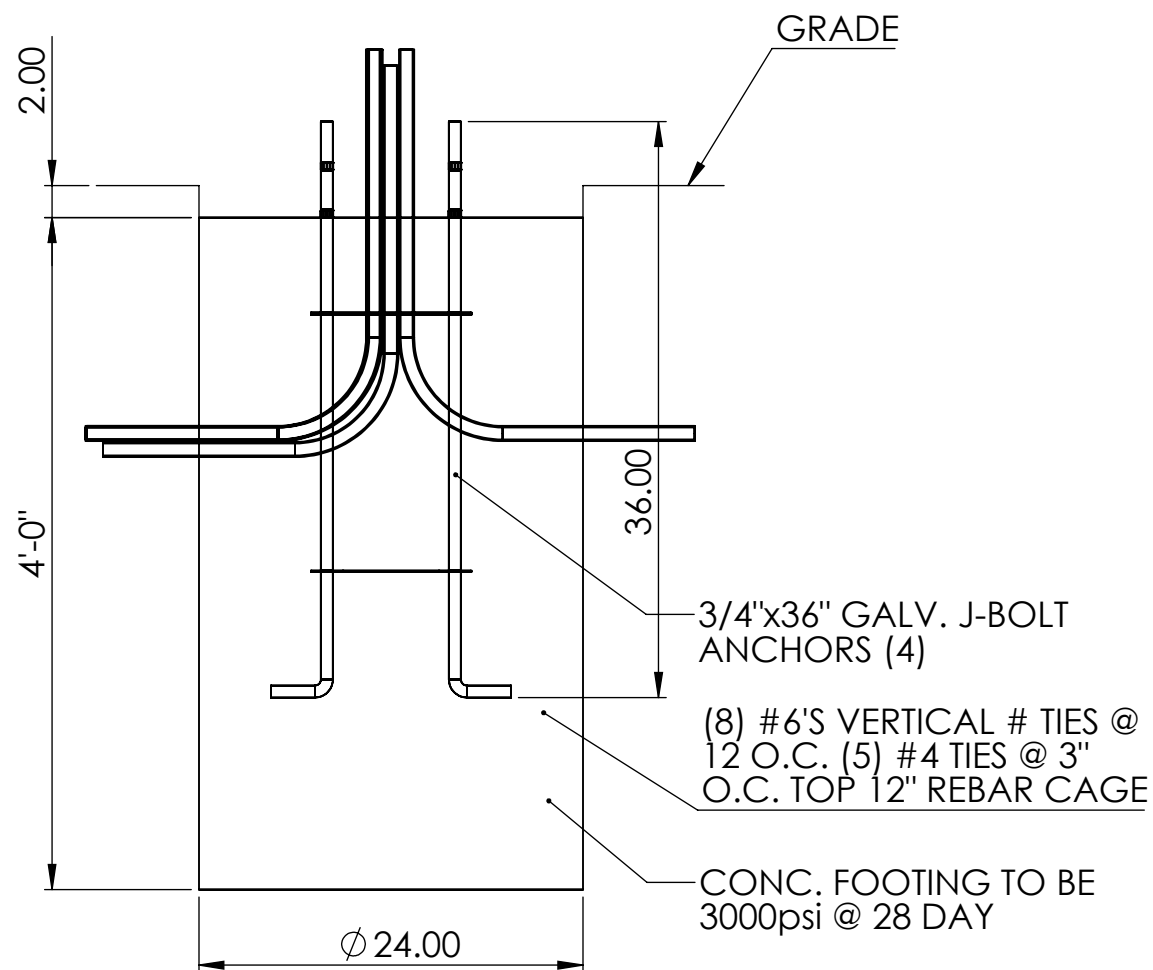
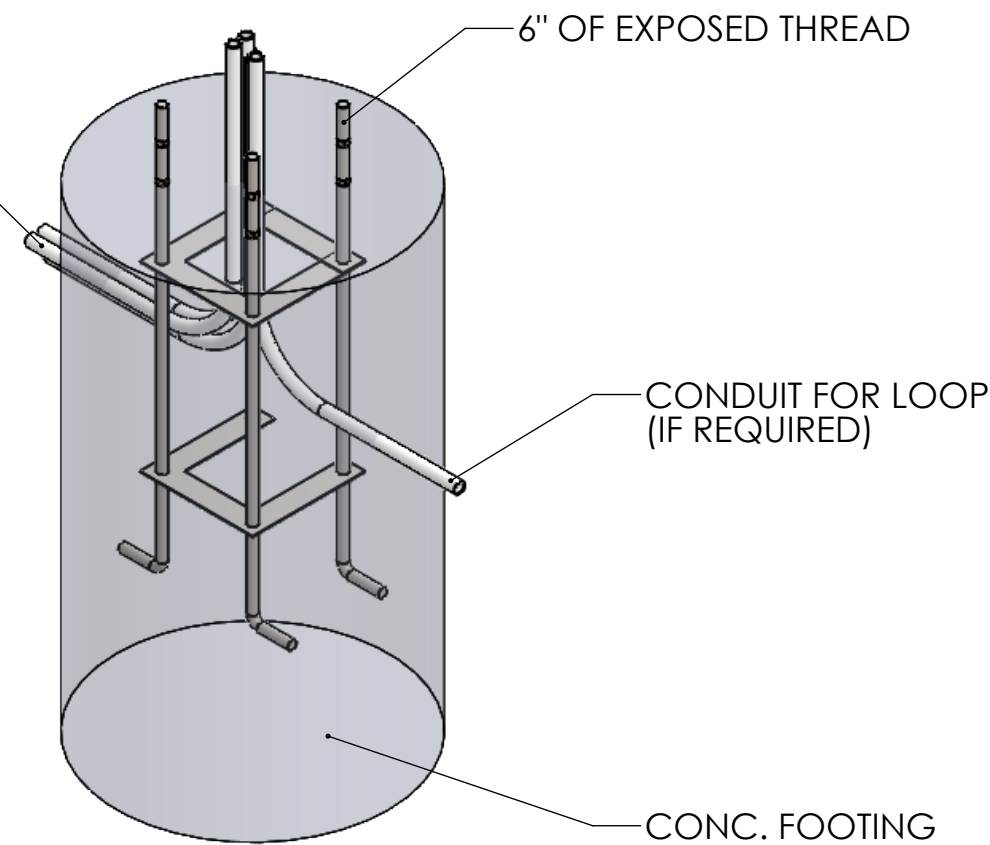
CLIENT: <b>DUNKIN DONUTS</b>		MADE IN THE USA
LOCATION: Marietta, GA		DATE: 5/18/2018
STORE:	DWG #:	ASSEMBLY #:
FILE LOCATION: z:\00----Projects\Dunkin Donuts\4----Standards\Clearance Bar Double\		
SALES: D. McDougal	DESIGNER: D. Carter	SCALE: NTS

**NOTE:**  
 THIS IS AN ORIGINAL, COPYRIGHTED DRAWING BY UNI-STRUCTURES, INC. (USI) AND SUBMITTED FOR YOUR PERSONAL USE IN CONNECTION WITH A PROJECT BEING PLANNED FOR YOU BY UNI-STRUCTURES, INC. AND IS NOT TO BE SHOWN TO ANYONE OUTSIDE YOUR ORGANIZATION, NOR IS IT TO BE USED, COPIED, REPRODUCED, OR EXHIBITED IN ANY FORM WITHOUT THE EXPRESS WRITTEN CONSENT OF USI. PURSUANT TO USI TERMS AND CONDITIONS. COPYRIGHT ©2008-2017, UNI-STRUCTURES, INC. ALL RIGHTS RESERVED WORLDWIDE

**OVERVIEW:**  
**DOUBLE CLEARANCE BAR**  
 PART #:  
**DUNKIN\_DOUBLE\_CLEARANCE\_BAR**  
 SHEET: 1 OF 9



(3) 3/4" CONDUIT FOR LOW VOLTAGE AND 120v POWER



**ANY SITE SPECIFIC ENGINEERING SUPERSEDES THIS DETAIL**



**Uni-Structures, Inc.**

8540 COBB CENTER DR.  
STE 100 KENNESAW, GA 30152  
PHONE: (770)-499-2000  
PHONE: (800)-386-9864

CLIENT: **DUNKIN DONUTS**

LOCATION: Marietta, GA

STORE: DWG #:

ASSEMBLY #: #####

FILE LOCATION: Z:\00----Projects\Dunkin Donuts\4----Standards\Clearence Bar Double\

SALES: D. McDougal

DESIGNER: D. Carter

SCALE: NTS

MADE IN THE USA

DATE:

NOTE:

THIS IS AN ORIGINAL, COPYRIGHTED DRAWING BY UNI-STRUCTURES, INC. (USI) AND SUBMITTED FOR YOUR PERSONAL USE IN CONNECTION WITH A PROJECT BEING PLANNED FOR YOU BY UNI-STRUCTURES, INC. AND IS NOT TO BE SHOWN TO ANYONE OUTSIDE YOUR ORGANIZATION, NOR IS IT TO BE USED, COPIED, REPRODUCED, OR EXHIBITED IN ANY FORM WITHOUT THE EXPRESS WRITTEN CONSENT OF USI, PURSUANT TO USI TERMS AND CONDITIONS. COPYRIGHT ©2008-2017, UNI-STRUCTURES, INC. ALL RIGHTS RESERVED WORLDWIDE

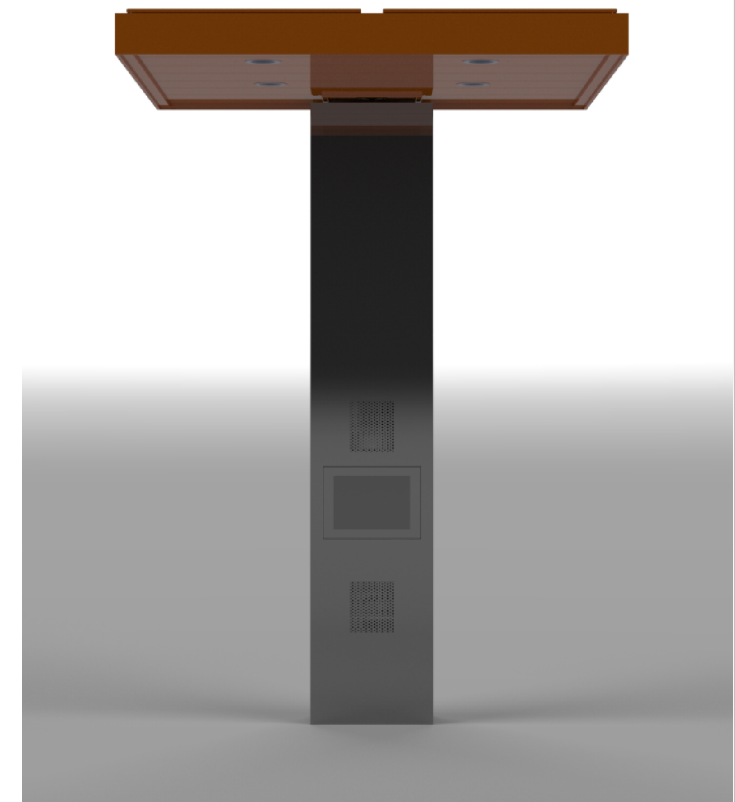
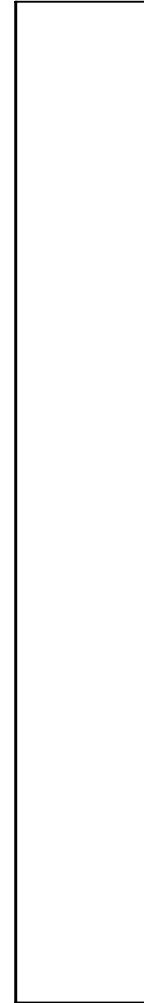
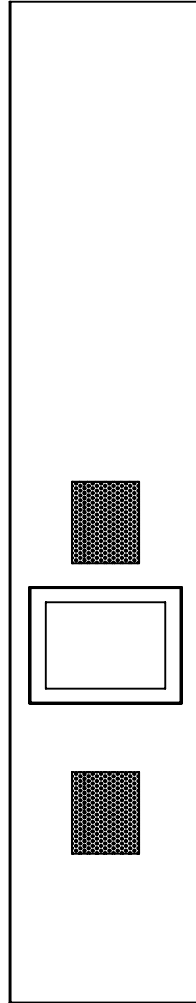
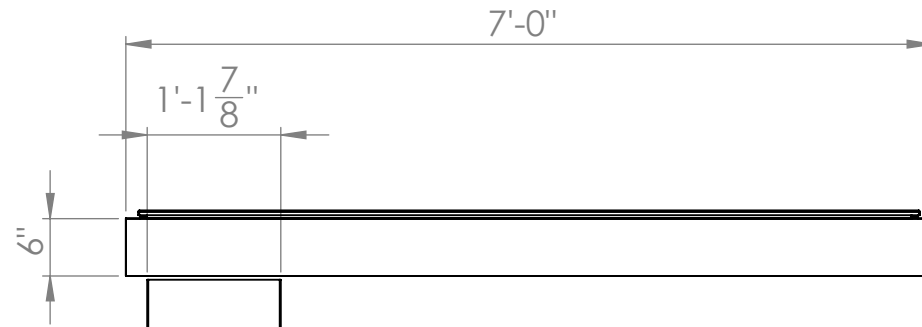
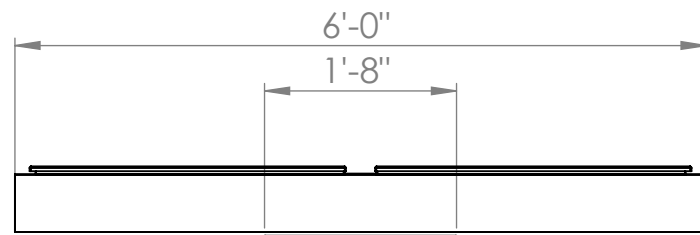
VIEW:

**FOOTING DETAIL**

PART #:

**200066-08**

SHEET: 9 OF 9



**Uni-Structures, Inc.**

8540 COBB CENTER DR.  
 STE 100 KENNESAW, GA 30152  
 PHONE: (770)-499-2000  
 PHONE: (800)-386-9864

CLIENT: <b>DUNKIN</b>		MADE IN THE USA	
		DATE: 01/24/2018	
LOCATION: CITY, ST			
STORE: #####	DWG #: 1015A	ASSEMBLY #: 203162-01	
FILE LOCATION: \\DC1\Design Files\0---SolidWorks Files\			
SALES: DANA McDOUGAL	DESIGNER: CJ MAYS	SCALE: NTS	

**NOTE:**  
 THIS IS AN ORIGINAL, COPYRIGHTED DRAWING BY UNI-STRUCTURES, INC. (USI) AND SUBMITTED FOR YOUR PERSONAL USE IN CONNECTION WITH A PROJECT BEING PLANNED FOR YOU BY UNI-STRUCTURES, INC. AND IS NOT TO BE SHOWN TO ANYONE OUTSIDE YOUR ORGANIZATION, NOR IS IT TO BE USED, COPIED, REPRODUCED, OR EXHIBITED IN ANY FORM WITHOUT THE EXPRESS WRITTEN CONSENT OF USI, PURSUANT TO USI TERMS AND CONDITIONS. COPYRIGHT ©2008-2017, UNI-STRUCTURES, INC. ALL RIGHTS RESERVED WORLDWIDE

ASSEMBLY #:  
**203162-01**

SHEET: 1 OF 1