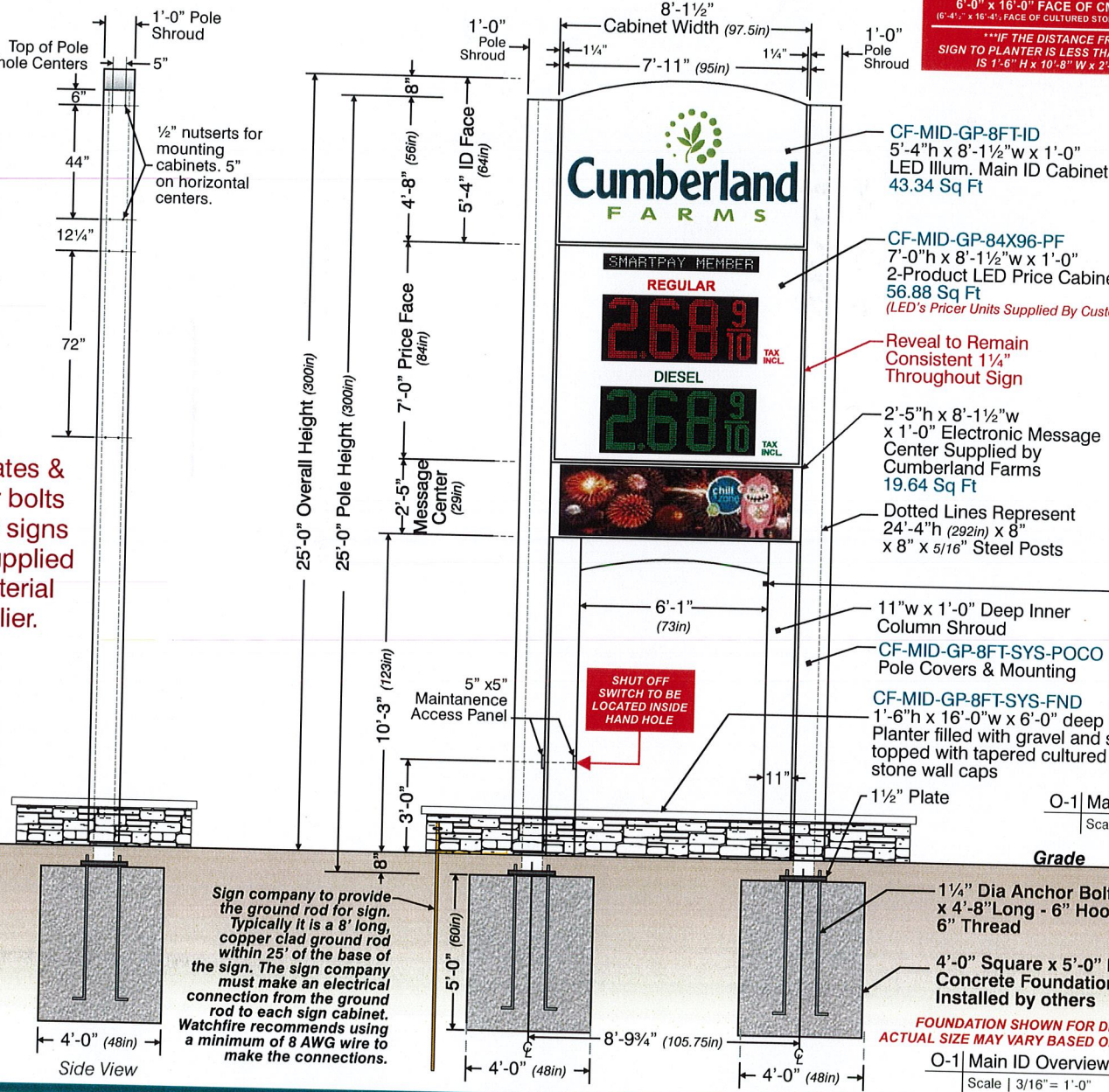
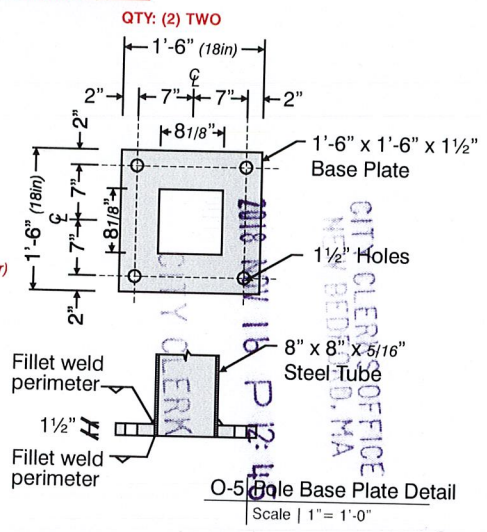


PLANNING
NOV 16 2018
DEPARTMENT

Templates & anchor bolts for MID signs to be supplied by material supplier.



STANDARD PLANTER FOR 8FT WIDE SIGNS
 6'-0" x 16'-0" FACE OF CMU TO FACE OF CMU
 (6'-4" x 16'-4" FACE OF CULTURED STONE TO FACE OF CULTURED STONE)
 IF THE DISTANCE FROM THE LOWEST SIGN TO PLANTER IS LESS THAN 1' THAN THE PLANTER IS 1'-6" H x 10'-8" W x 2'-4" D w/ Solid Top



FOR PLANTER AND PLANTER FOUNDATION SEE: SHEET: A0.5 TITLED: PYLON SIGN-PLAN, ELEVATIONS AND DETAIL

O-1 Main ID Overview
Scale | 3/16" = 1'-0"

O-1 Main ID Overview
Scale | 3/16" = 1'-0"

Cumberland FARMS

C1 Pantone 301C	C2 Pantone 376C
C3 Pantone 109	C4 Pantone Process Black



DWG
 Z:\Cumberland Farm\Product ID\CF-MID-GP-8FT-SYS-1\Design\CF-MID-GP-8FT-SYS-1.cdr

PR | X
 SF | x



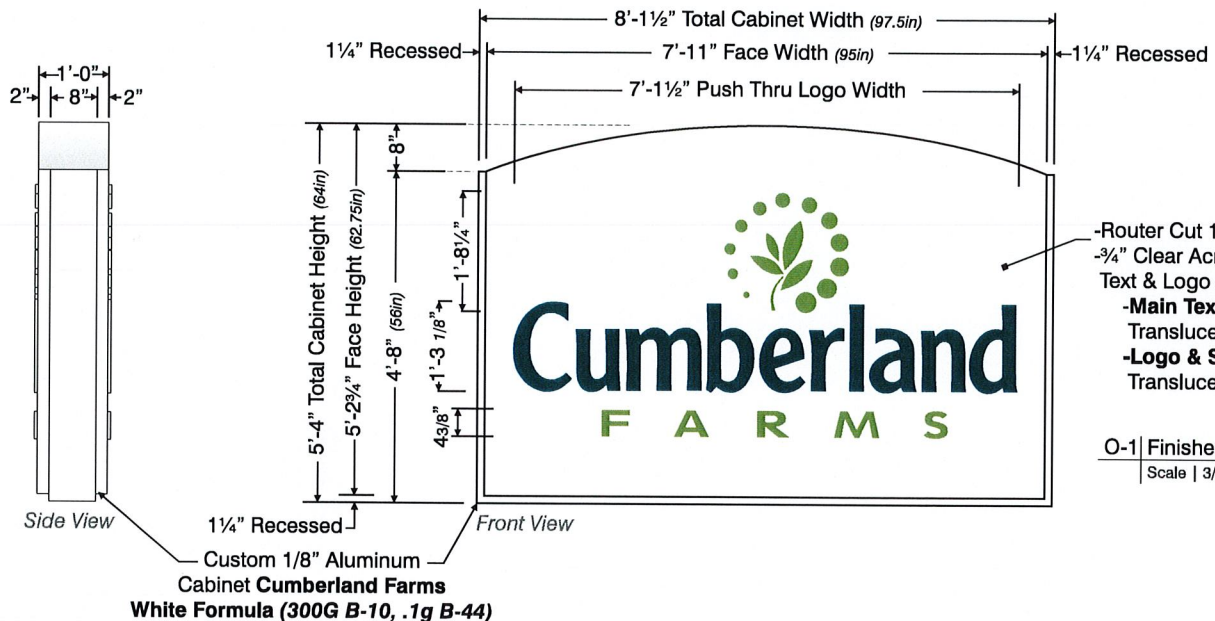
251 Boot Road
 Downingtown PA 19335
 TEL 610.518.5881
 FAX 610.518.5244
 WWW info@prosign.net

Cumberland Farms Inc
 Address, Street
 Town, State Zip

Copyright, Pro Sign Company, 2015
 THIS DRAWING INCLUDES DATA THAT IS PROPRIETARY INFORMATION OF PRO SIGN COMPANY. IT SHALL NOT BE USED, DUPLICATED OR DISCLOSED IN WHOLE OR PART FOR ANY PURPOSE OTHER THAN TO EVALUATE THIS PROPOSAL. IF A CONTRACT IS AWARDED TO THIS PROPOSER AS A RESULT OF OR IN CONNECTION WITH THE SUBMISSION OF THIS DATA, THE REFEREE SHALL HAVE THE RIGHT TO USE OR DISCLOSE THE DATA TO THE EXTENT PROVIDED IN THE RESULTING CONTRACT.

C-4

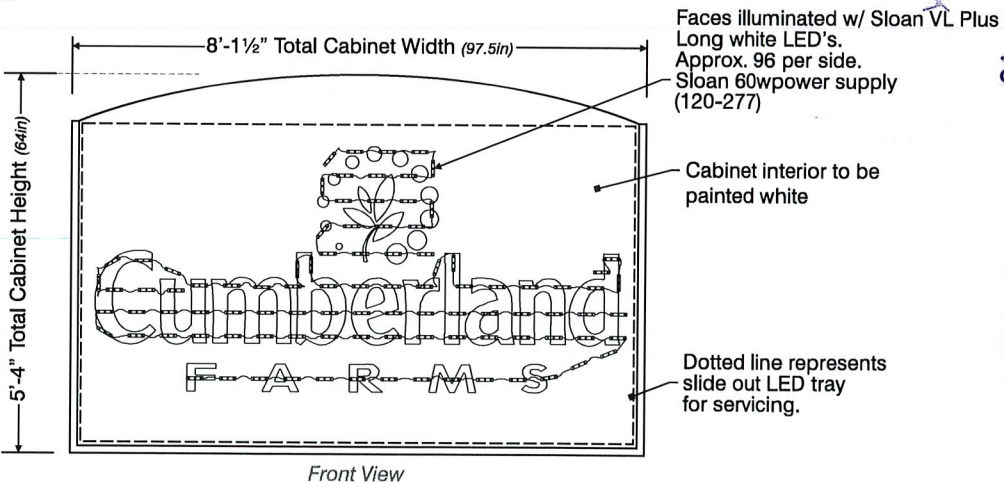
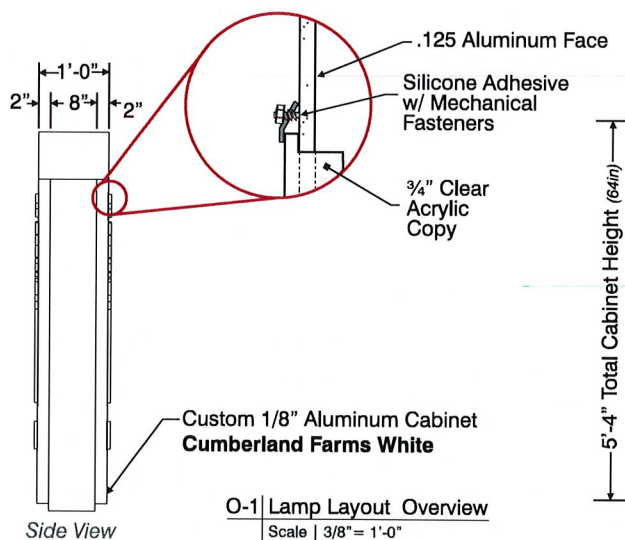
REV Design
 X X
 PM By
 CPI X



Cabinet color & finish to match Alcoa Shell white

- Router Cut 1/8" Cumberland Farms White Aluminum Face
- 3/4" Clear Acrylic Push Thru (1/2" ± Exposed) "Cumberland Farms"(PX-AC-CL-750-1) Text & Logo Attached with Fasteners mounted to Rear of Aluminum Face
- Main Text ("Cumberland") to be Laminated w/ 3M™ Scotchcal™ Translucent Graphic Film 3630-97 Bristol Blue (1st Surface)
- Logo & Sub Text ("Farms") to be Laminated w/ 3M™ Scotchcal™ Translucent Graphic Film 3630-106 Brilliant Green (1st Surface)

O-1 | Finished Cabinet Overview
 Scale | 3/8" = 1'-0"



CITY CLERK
 CITY CLERKS OFFICE
 NEW BEDFORD, MA
 2018 NOV 16 PM 2:25

Cumberland FARM S

C1	Pantone 301C	C2	Pantone 376C
C3	Pantone 109	C4	Pantone Process Black



PRODUCTION
 W:\Cumberland Farms\Product ID\
 CF-MID-GP-8FT-ID\Production\
 -Multiple Files

DESIGN
 Z:\Cumberland Farm\Product ID\
 CF-MID-GP-8FT-ID\Design\
 CF-MID-GP-8FT-ID.cdr

PR | X
 SF | x



251 Boot Road
 Downingtown PA 19335
 TEL 610.518.5881
 FAX 610.518.5244
 WWW info@prosign.net

Cumberland Farms Inc
 Address, Street
 Town, State Zip

Copyright, Pro Sign Company, 2015
 THIS DRAWING INCLUDES DATA THAT IS PROPRIETARY INFORMATION OF PRO SIGN COMPANY. IT SHALL NOT BE USED, DUPLICATED OR DISCLOSED IN WHOLE OR PART FOR ANY PURPOSE OTHER THAN TO EVALUATE THIS PROPOSAL. IF A CONTRACT IS AWARDED TO THIS PROPOSER AS A RESULT OF OR IN CONNECTION WITH THE SUBMISSION OF THIS DATA, THE DEFEREE SHALL HAVE THE RIGHT TO USE OR DISCLOSE THE DATA TO THE EXTENT PROVIDED IN THE RESULTING CONTRACT.

C-5

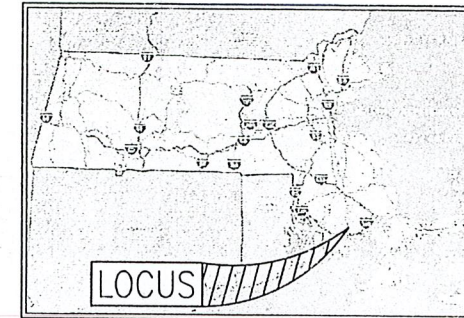
REV	Design
X	X

PM	By
CPI	X

2018 NOV 16 A 11: 16

SITE PLAN

CITY CLERK

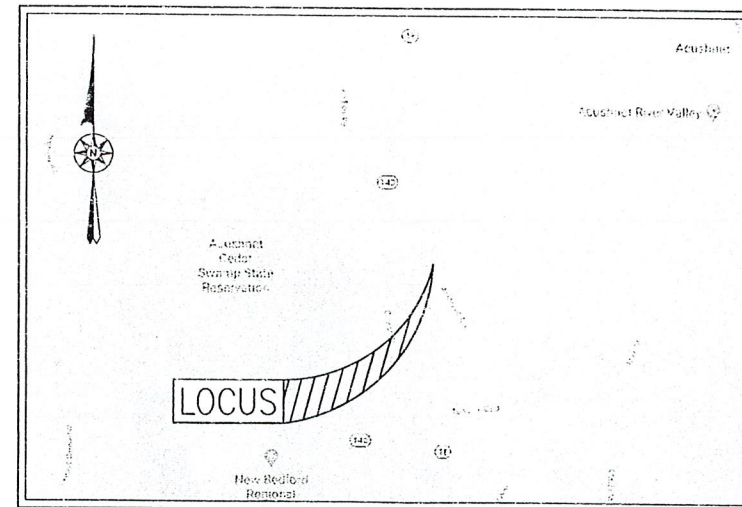


LOCUS

STATE LOCUS

2904 & 2914 ACUSHNET AVENUE ASSESSORS MAP 130D LOTS 117,247,248 AND 447 NEW BEDFORD, MASSACHUSETTS

EXISTING	LEGEND	PROPOSED
CL	CONTOUR LINE	101
SG	SPOT GRADE	101.1
EOP	EDGE OF PAVEMENT	EOP
VGC	VERTICAL GRANITE CURB	VGC
SGC	SLOPED GRANITE CURB	SGC
VCC	VERTICAL CONCRETE CURB	VCC
BCC	BITUMINOUS CONCRETE CURB	BCC
COB	CAPE COD BERM	COB
	STONE WALL	
	CHAIN LINK FENCE	
	IRON FENCE	
	POST & RAIL FENCE	
	STOCKADE FENCE	
	GUARD RAIL	
	HAY BALES	
	WATER LINE	
	FIRE HYDRANT	
	POST INDICATOR VALVE	
	WATER GATE	
	WATER METER PIT	
	IRRIGATION HAND HOLE	
	WELL	
	SEWER LINE	
	SEWER MANHOLE	
	GAS LINE	
	GAS METER	
	GAS GATE	
	DRAIN LINE	
	DRAIN MANHOLE	
	CATCH BASIN	
	OVERHEAD WIRES	
	ELECTRIC, TELEPHONE & CABLE	
	UTILITY POLE	
	CITY WIRE	



— AREA MAP —
SCALE: 1"=2,000'±

— INDEX —

SHEET	DESCRIPTION
CFG0.0	COVER SHEET
CFG1.0	GENERAL NOTES
CFG2.0	EXISTING CONDITIONS PLAN
CFG2.1	EXISTING CONDITIONS PLAN
CFG3.0	SITE DEMOLITION PLAN
CFG4.0	SITE PLAN
CFG5.0	SITE GRADING & DRAINAGE PLAN
CFG6.0	SITE EROSION & SEDIMENTATION CONTROL PLAN
CFG7.0	SITE UTILITY PLAN
SL	CREDIT UNION PLAN
CFG8.0	SITE LANDSCAPING PLAN
CFG9.0	SITE CONSTRUCTION DETAILS 1
CFG9.1	SITE CONSTRUCTION DETAILS 2
CFG9.2	SITE CONSTRUCTION DETAILS 3
CFG10.0	SITE LIGHTING PLAN
CFG10.1	SITE LIGHTING PLAN DETAILS
CFG12.0	CANOPY ELEVATIONS
CFG12.1	CANOPY DETAILS
CFG13.0	SIGN DRAWING
CFG13.1	SIGN DRAWING
CFG13.2	SIGN DETAILS
A101	FLOOR PLAN
A130	EXTERIOR REFLECTED CEILING PLAN
A200	EXTERIOR ELEVATIONS
A201	EXTERIOR ELEVATIONS
X101	UTILITY COORDINATION
CW-A-100	FLOOR PLAN AND EXTERIOR REFLECTED CEILING PLAN
CW-A-200	EXTERIOR ELEVATIONS
CW-X-101	UTILITY COORDINATION PLAN

REVISIONS

www.FarlandCorp.com

401 COUNTY STREET
NEW BEDFORD, MA 02740
P. 508.717.3479

OFFICES IN:
• TAUNTON
• MARLBOROUGH
• WARWICK, RI

DRAWN BY: JKM
DESIGNED BY: CAF
CHECKED BY: CAF

SITE PLAN
2904 & 2914 ACUSHNET AVENUE
ASSESSORS MAP 130D LOTS 117, 247, 248, & 447
NEW BEDFORD, MASSACHUSETTS

T.M. CROWLEY & ASSOCIATES
14 BREAKNECK HILL ROAD, SUITE 101
LINCOLN, RI 02865

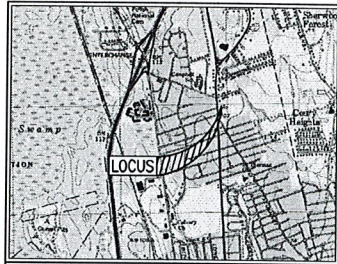
NOVEMBER 7, 2018
SCALE: AS NOTED
JOB NO. 17-1134
LATEST REVISION:

COVER SHEET
CFG00.0

CONTRACTOR TO VERIFY EXISTING UTILITIES AND CONDITIONS OF EXISTING UTILITIES. CITY OF NEW BEDFORD HAS THE RIGHT TO REVOKE THIS PERMIT AT ANY TIME WITHOUT NOTICE. CONTRACTOR SHALL BE RESPONSIBLE FOR OBTAINING ALL NECESSARY PERMITS FROM THE CITY OF NEW BEDFORD AND THE STATE OF MASSACHUSETTS. CONTRACTOR SHALL BE RESPONSIBLE FOR OBTAINING ALL NECESSARY PERMITS FROM THE CITY OF NEW BEDFORD AND THE STATE OF MASSACHUSETTS.

CITY CLERKS OFFICE
NEW BEDFORD, MA

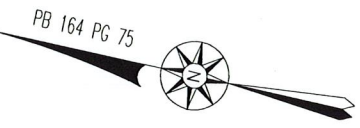
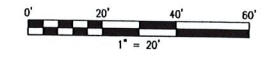
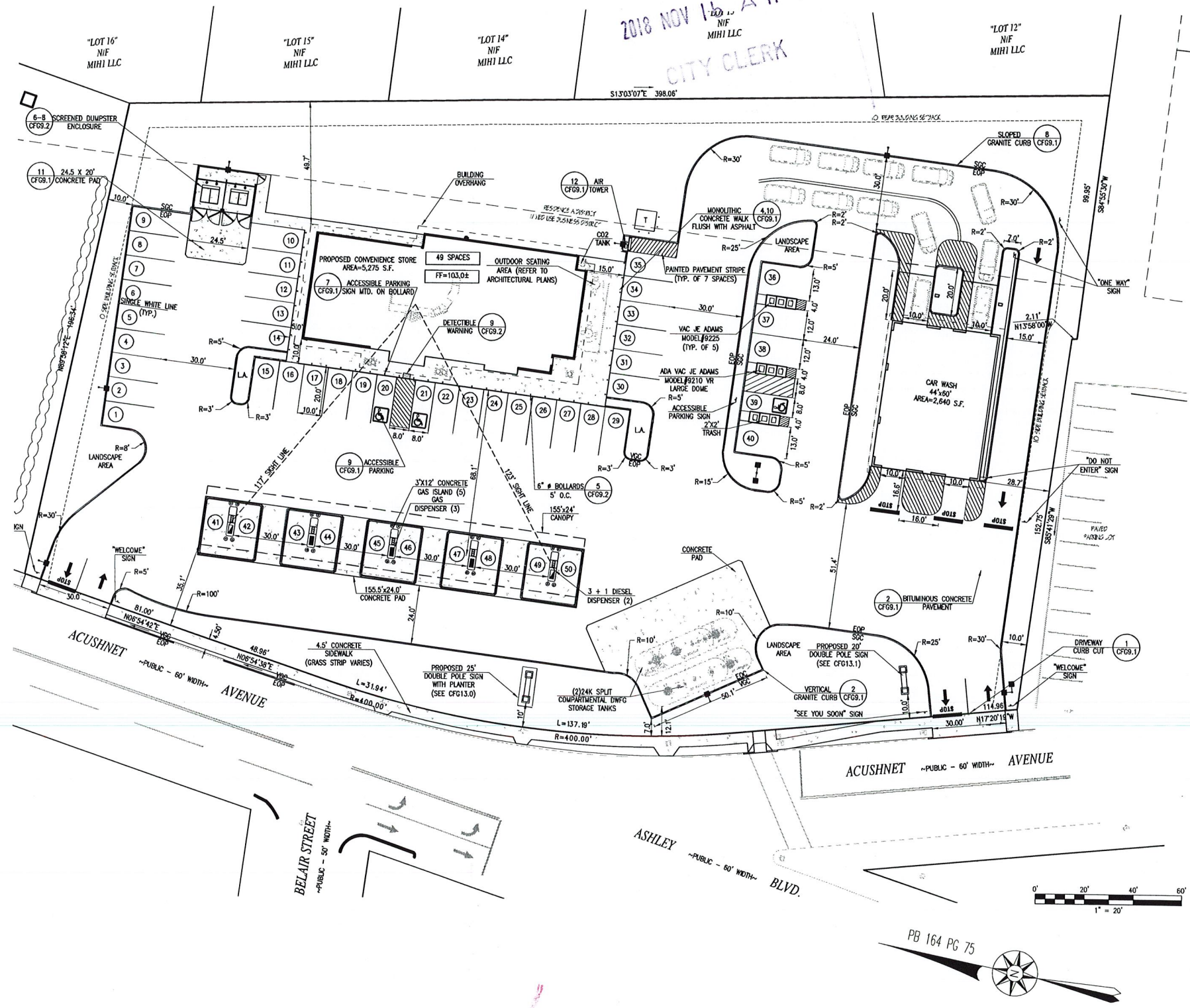
2018 NOV 16 A 11:16
MIHI LLC
CITY CLERK



LOCUS MAP SCALE: NTS

- ZONING DATA TABLE -

PROJECT DATA	
TOTAL SITE AREA	2.25± ACRES
BUILDING FOOTPRINT	5,275 S.F. CUMBERLAND FARMS 2,640 S.F. CAR WASH
TOTAL PARKING REQUIRED	RETAIL: 1 SPACE/200 S.F. CAR WASH: 1 SPACE/400 S.F.
	5,275/200 = 27 SPACES 2,640/400 = 7 SPACES
TOTAL PARKING PROVIDED	50
LAND INFORMATION	
ASSESSORS MAP	1300
BLOCK/LOT NUMBER	LOTS 117, 247, 248, 447
ZONING INFORMATION	ZONING INFORMATION OBTAINED FROM THE CITY OF NEW BEDFORD WEBSITE, DOWNLOADED 08/23/17
ZONING DISTRICT	MUB DISTRICT AND RESIDENCE A
MIN. LOT AREA	REQUIRED 15,000 S.F. PROVIDED 98,044 S.F.
MIN. FRONTAGE	REQUIRED 0 FT PROVIDED 414.05 FT
BUILDING HEIGHT LIMIT	REQUIRED 7 STORIES OR 100 FT PROVIDED 32.83 FT
MAX. LOT COVERAGE	REQUIRED 70% PROVIDED 70.0%
STRUCTURE SETBACKS	REQUIRED PROVIDED
FRONT YARD	0 FT 35.1 FT
SIDE YARD	10 FT 28.7 FT
REAR YARD	10 FT 49.7 FT
LANDSCAPING/OPEN SPACE	MINIMUM OPEN SPACE IS 30%
DOT INFORMATION	
CURB CUT PERMIT	REQUIRED
MAJOR ROAD JURISDICTION	ACUSHNET AVENUE - CITY LAYOUT - LOCAL
MINOR ROAD JURISDICTION	N/A



REVISIONS

FARLAND CORP.

www.FarlandCorp.com

401 COUNTY STREET
NEW BEDFORD, MA 02740
P. 508.717.3479

OFFICES IN:
• TAUNTON
• MARLBOROUGH
• WARWICK, RI

DRAWN BY: JKM
DESIGNED BY: CAF
CHECKED BY: CAF

SITE PLAN
2904 & 2914 ACUSHNET AVENUE
ASSESSORS MAP 1300 LOTS 117, 247, 248, & 447
NEW BEDFORD, MASSACHUSETTS

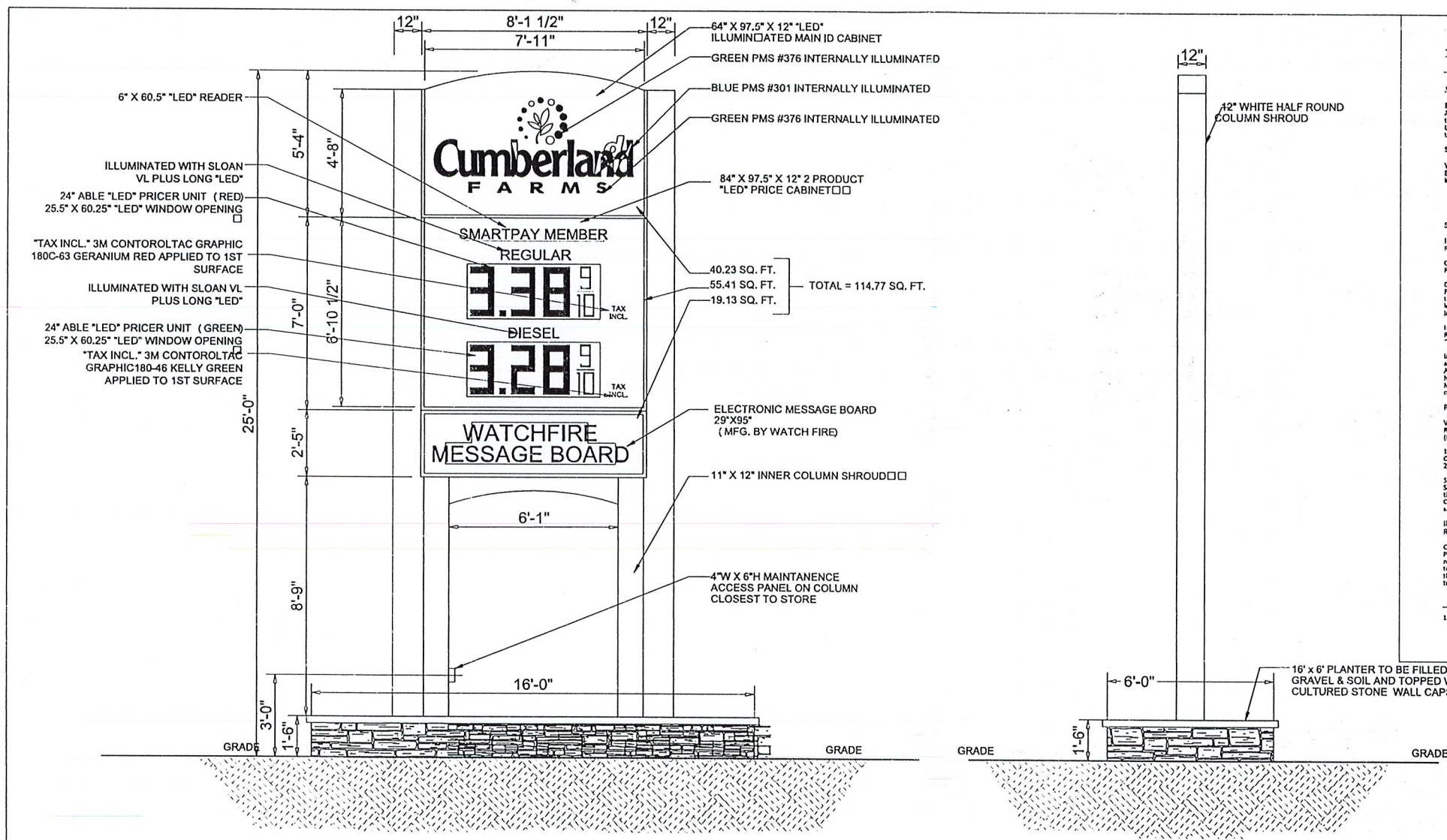
PREPARED FOR:
I.M. CROWLEY & ASSOCIATES
14 BREANNECK HILL ROAD, SUITE 101
LINCOLN, RI 02865

NOVEMBER 7, 2018
SCALE: 1"=20'
JOB NO. 17-1134
LATEST REVISION:

SITE PLAN
CFG04.0

CONSENT TO PRINT FOR THIS PROJECT IS GRANTED BY THE CITY OF NEW BEDFORD, MASSACHUSETTS. THIS PLAN IS THE PROPERTY OF I.M. CROWLEY & ASSOCIATES, INC. AND IS NOT TO BE REPRODUCED, COPIED, OR TRANSMITTED IN ANY FORM OR BY ANY MEANS, ELECTRONIC OR MECHANICAL, INCLUDING PHOTOCOPYING, RECORDING, OR BY ANY INFORMATION STORAGE AND RETRIEVAL SYSTEM, WITHOUT THE WRITTEN PERMISSION OF I.M. CROWLEY & ASSOCIATES, INC.

2018 NOV 16 A 11:11
CITY CLERK



FRONT VIEW

SIDE VIEW

2017 Cumberland Farms Installation Procedure



JOB SITE PREPARATION - GC Responsibility
 Electrical
 A Watchfire sign requires 24/7 120 power and may not be wired to a photo eye, timer, or power management system. Please LABEL Breaker in Service Panel to read "LED SIGN" to aid in future troubleshooting.

SIGN ARRIVAL - Sign Contractor Responsibility
 Watchfire's Accessory Kit
 Ensure all components are included in shipment from Watchfire including the Accessory Kit:
 • Sign OP Manual (not required for installation)
 • Sign Installation Manual
 • 4G Wireless Antenna and Kit mounting bracket (2x2x1/2x2x1/2)

SET UP - Sign Contractor Responsibility
 Install Ground Rod
 Refer to page 14 of the Watchfire Installation Manual.
 Connect Power
 Refer to page 15 of the Watchfire Installation Manual (Fig. 1)
 Data Crossover Cable Connected
 For double face sign installations, connect the 2 cabinets using the data crossover cables provided. Cable connections are located at the back of each sign cabinet. See Watchfire Installation Manual page 18.
 Install 4G Wireless Antenna
 Remove the module on the top left corner of the sign labeled "Master Class". Remove the 4G Wireless Antenna.
 Install the 4G Wireless Antenna on the outside of the pylon sign as indicated on pylon sign drawings from exterior sign contractor. Antenna may be mounted vertically as shown (Fig. 2) or horizontally. Connect the 4G Wireless Antenna to the 4G Cellular Modem located inside the sign as shown (Fig. 3) Refer to Page 24 of the Watchfire Installation Manual.

POWER UP - Sign Contractor Responsibility
 Verify Proper Power Requirements
 Refer to ampage and voltage requirements for the sign(s) (Fig. 4)
 120 VAC Each Leg
 Call Cumberland Farms at 800-235-9702, extension 5206, option 2 for fee advice support if power is not available at time of install.

Sign Playing Signaling Graphics
 Sign ships from Watchfire facility with programmed messages that should display once power is applied to the message center. Cumberland Farms sign message should be displayed on each sign face.

INITIAL COMMUNICATION TESTS - Sign Contractor Responsibility
 Call the Watchfire Helpdesk 866-637-2645
 Provide the service technician with the Serial # (located on the name plate in the lower right corner) (Fig. 4). Ask the service technician to verify that Watchfire can connect to the sign. If they cannot connect, the Helpdesk will guide you through troubleshooting procedures to help resolve the issue.

1 | watchfire.com 800-637-2645



Fig. 1 - Connect Power



Fig. 2 - 4G Wireless Antenna



Fig. 3 - 4G Modem Connection



Fig. 4 - Serial # / Electrical Service

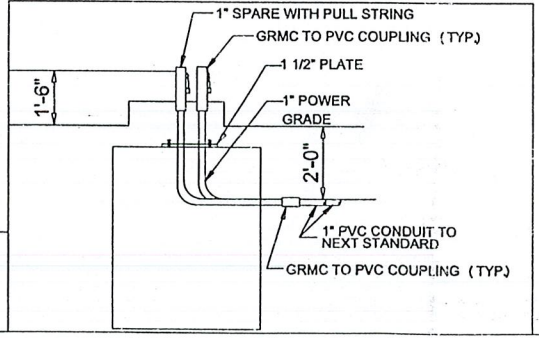
SIGN UPDATE - VF HelpDesk Responsibility
 Once communication has been established, send an email to signupdate@watchfire.com and request that the sign be updated with the latest Cumberland Farms content immediately. Provide Serial # (Fig. 4).

Verification - Sign Contractor Responsibility
 Upon visual confirmation that a new Cumberland Farms message is playing on the sign, take a photo and email it to signupdate@watchfire.com before leaving jobsite.

NOTE:
 SEE SHEET A0.5 AND SA.1 FOR FOUNDATION AND STRUCTURAL DETAILS. THESE PLANS WILL BE PREPARED PRIOR TO FILING FOR A BUILDING PERMIT.

ID&GAS PRICE SIGN ELECTRICAL REQUIREMENTS
 1" PVC CONDUIT W/ 3#10 AND SA.1 FOR FOUNDATION AND STRUCTURAL DETAILS (20 AMP)
 1" PVC CONDUIT *SPARE* W/PULL STRINGS
 1 WEATHER PROOF JUNCTION BOX

SPECIFICATIONS
 * 12" DEEP ALUMINUM FABRICATED SIGN CABINET W/INTERNAL, HIGH OUTPUT FLOURESCENT ILLUMINATION... CABINET PAINTED WHITE
 * 1/8" ALUMINUM CAM ROUTERED SIGN FACES, "CUMBERLAND FARMS" ROUTERED TEXT AND LOGO
 * CLEAR ACRYLIC PUSH THRU (1/2"-5/8" EXPOSED) "CUMBERLAND" TEXT TO RECEIVE TRANSLUCENT VINYL OVERLAY 3M BLUE "FARMS" VINYL O
 * SIGN TO INSTALL BETWEEN NEW 8" SQUARE STEEL COLUMNS... INCLUDES NEW HALF ROUND PVC POLE COVERS, INNER ARCHED ALUMINUM FILLER AND



REVISIONS			V# NEW
DATE	REV. BY.	DESCRIPTION	Store# NEW
05/04/17	RSP	WATCHFIRE DIMS	

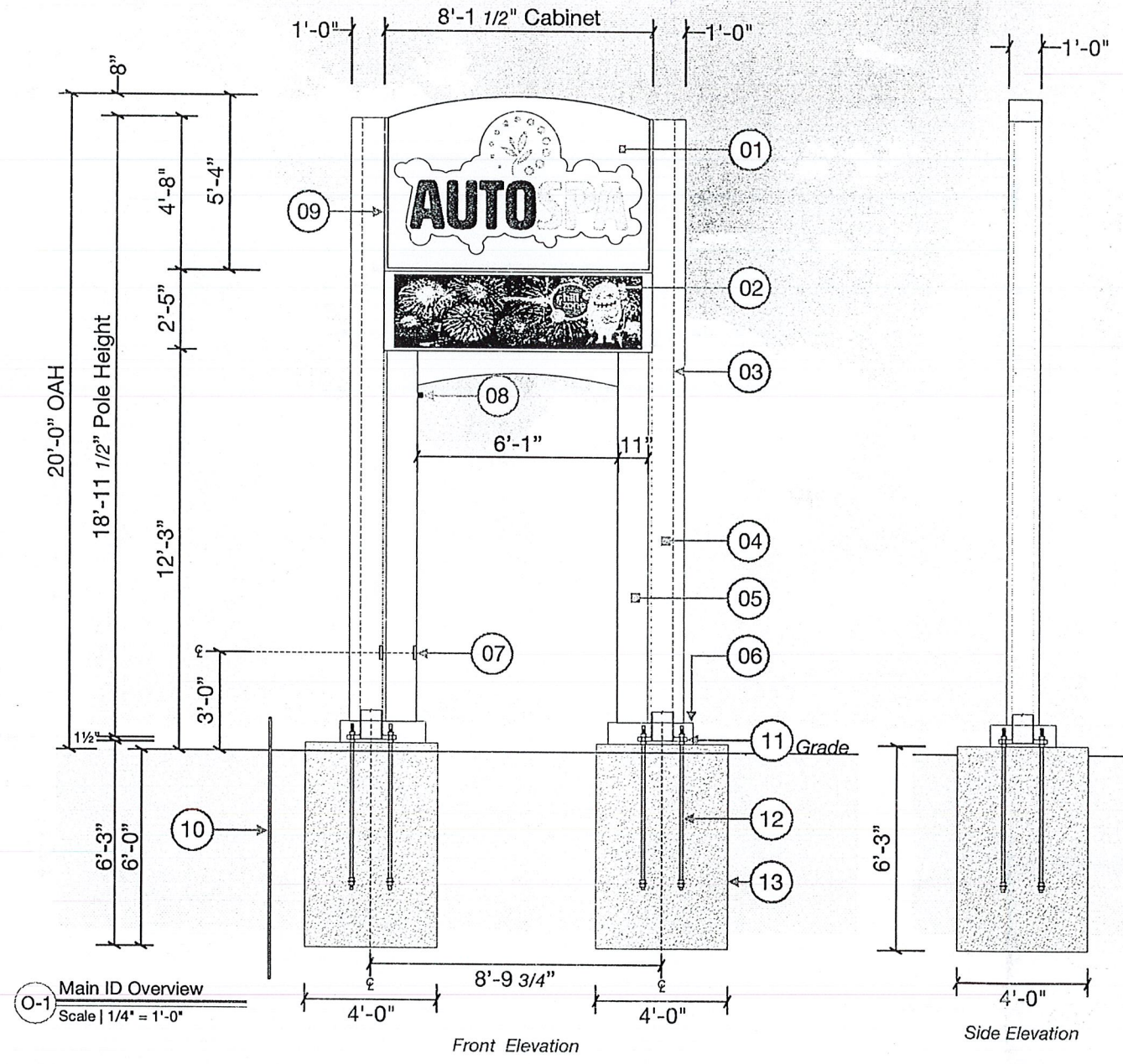
2004 & 2014 ACUSHNET AVENUE
8' PROTOTYPE

 CUMBERLAND FARMS, INC.
 165 Flanders Road
 Weymouth, Massachusetts 01981
 SCALE: 1/2" = 1'-0"
 DATE: 11/07/18
 FILE: 17-1134
 DRAWN BY:
 CHECKED BY:
 PROPOSED SIGN DRAWING
 CFG 13.0

2018 NOV 16 A 11:17

CITY CLERK

Max 1/2" Bolt Height
of 7' above Grade



O-1 Main ID Overview
Scale | 1/4" = 1'-0"

FOR PLANTER AND PLANTER
FOUNDATION SEE:
SHEET: A0.5
TITLED: PYLON SIGN-PLAN,
ELEVATIONS AND DETAIL

Templates &
anchor bolts
for MID signs
to be supplied
by material
supplier.

- 01 CF-MID-GP-8FT-ID
5'-4" h x 8'-1 1/2" w x 1'-0"
LED Illum. Main ID Cabinet
w/ Router cut & backed up
white polycarb logo &
trans vinyl graphics
43.34 Sq Ft
- 02 2'-5" h x 8'-1 1/2" x 1'-0"
Electronic Message Center
Supplied by Cumberland Farms
19.64 Sq Ft
NOTE: MESSAGE TO CHANGE EVERY 24HRS
- 03 Dotted Lines Represent
18'-11 1/2" h x 8" x 8" x 5/16"
Steel Posts
- 04 CF-MID-GP-8FT-SYS-POCO
Pole Covers & Mounting
- 05 11" w x 1'-0" Deep
Inner Column Shroud
- 06 2'-0" x 2'-7" x 8" h .080 aluminum plate cover
painted white to match Cumberland Farms White
- 07 5" x 5" Maintenance Access Panel
SHUT OFF SWITCH TO BE
LOCATED INSIDE HAND HOLE
- 08 Watchfire board master chassis side to be closest
to building. Antenna to be mounted inside inner
shroud via magnet on building side.
(Antenna to protrude 2" out of inner shroud)
- 09 Reveal to Remain Consistent 1 1/4" Throughout Sign
- 10 Sign company to provide the ground rod for sign.
Typically it is a 8' long, copper clad ground rod
within 25' of the base of the sign. The sign company
must make an electrical connection from the ground
rod to each sign cabinet. Watchfire recommends using
a minimum of 8 AWG wire to make the connections.
- 11 1'-6" x 1'-6" x 1 1/2" thk base plates (see plate detail)
- 12 (4) 1 1/4" Dia Anchor Bolts 54" embed
- 13 4'-0" Square x 6'-3" Deep Concrete Foundation
Installed by others
*FOUNDATION DIMENSIONS SHOWN FOR DESIGN INTENT ONLY.
ACTUAL SIZE MAY VARY BASED ON LOCAL REQUIREMENTS*

CUSTOM PLANTER FOR 8FT WIDE SIGNS
6'-0" x 16'-0" FACE OF GMI TO FACE OF GMI
8'-2" x 16'-0" FACE OF BRICK VENEER TO FACE OF BRICK VENEER
IF THE DISTANCE FROM THE LOWEST
SIGN TO PLANTER IS LESS THAN 1' THAN THE PLANTER
IS 16'-0" H x 10'-0" W x 2'-0" D w/ Solid Top

Cumberland
F A R M S
2904 & 2914 Acushnet
Avenue New Bedford, MA
02740
ACCT #: 007403

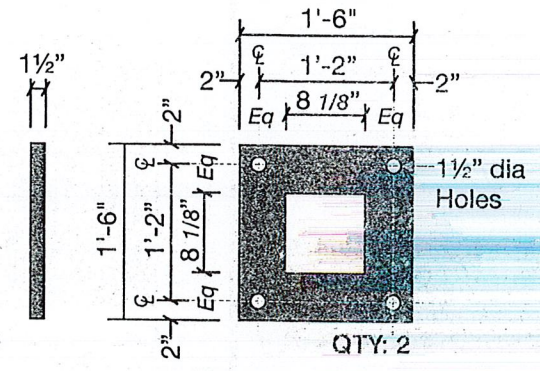
PRODUCTION
Typography
MoB
Regular | 0 Kerning | 0 Spacing
ABCDEFGHIJKLMN O PQRSTU VWXYZ
abcdefghijklmnopqrstuvwxyz
0123456789*/&#

Color Palette | Pantone • Paint • Vinyl

C1 Pantone Color: 301C
Opaque Vinyl: 3M Vivid Blue 100C-17
Translucent Vinyl: 3M Bristol Blue 3630-97

C2 Pantone Color: 376C
Opaque Vinyl: 3M Apple Green 180C-198
Translucent Vinyl: 3M Brilliant Green 3630-108
Green ACM: Alcoa Reynolds Duragloss
3000 Outrageous Green

C3 Paint Color: Cumberland Farms White
matches Alcoa Shroud White
(300G B-10, 1g B-44)



O-2 Plate Detail
Scale | 3/4" = 1'-0"

prosign
251 Boot Road
Downingtown, PA 19335
610.518.5881
610.518.5244
info@prosign.net

CF-MID-GP-8FT-SYS-3 | SPECIFICATIONS
QTY: ONE (1) MAIN ID SIGN SYSTEM

DESIGNER: DK
REVISIONS: REVISED FOUNDATIONS & ADDRESS 10/27/18 REVISED TO PRODUCTION

PM: JD
DESIGNER: DK
DATE: 8/6/2018

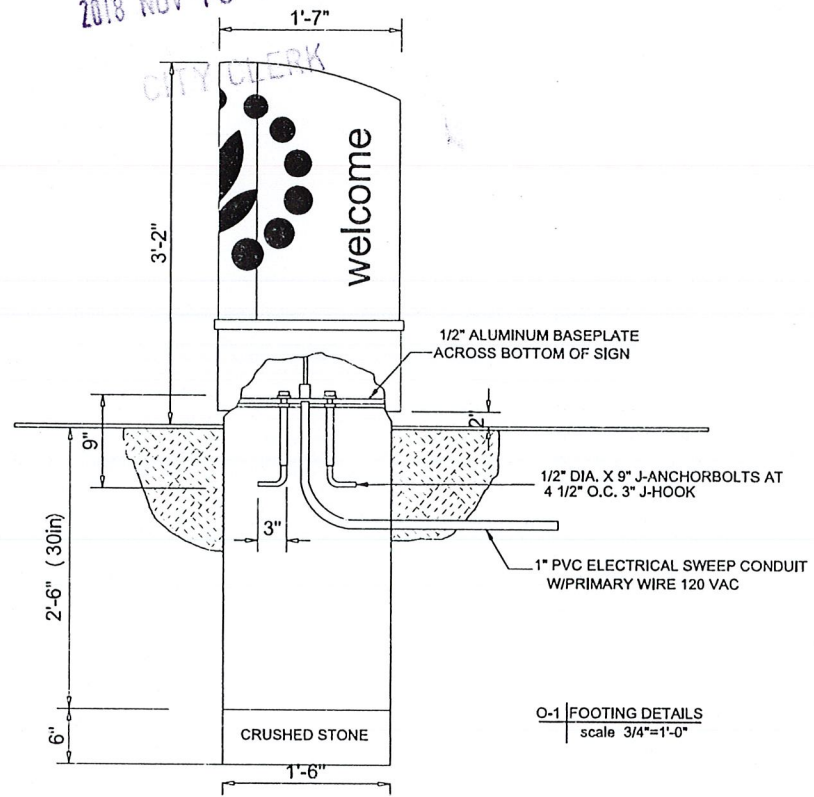
Copyright, Pro Sign Company, 2017
THIS DRAWING INCLUDES DATA THAT IS PROPRIETARY INFORMATION OF PRO SIGN COMPANY. IT SHALL NOT BE USED, DUPLICATED OR DISCLOSED IN WHOLE OR PART FOR ANY PURPOSE OTHER THAN TO EVALUATE THIS PROPOSAL. IF A CONTRACT IS AWARDED TO THIS PROPOSER AS A RESULT OF OR IN CONNECTION WITH THE SUBMISSION OF THIS DATA, THE DEFENSE SHALL HAVE THE RIGHT TO USE OR DISCLOSE THE DATA TO THE EXTENT PROVIDED IN THE RESULTING CONTRACT.

Job File Locations
DWG: W:\Cumberland Farms\Sites\MA\Bridgewater\007403\Design\007403-2_PRD-CF_BRIDGEWATER, MA.cdr
ART: W:\Cumberland Farms\Sites\MA\Bridgewater\007403\Production\CF-MID-GP-8FT-ID-AUTOSPA.eps

Page
CFG13.1

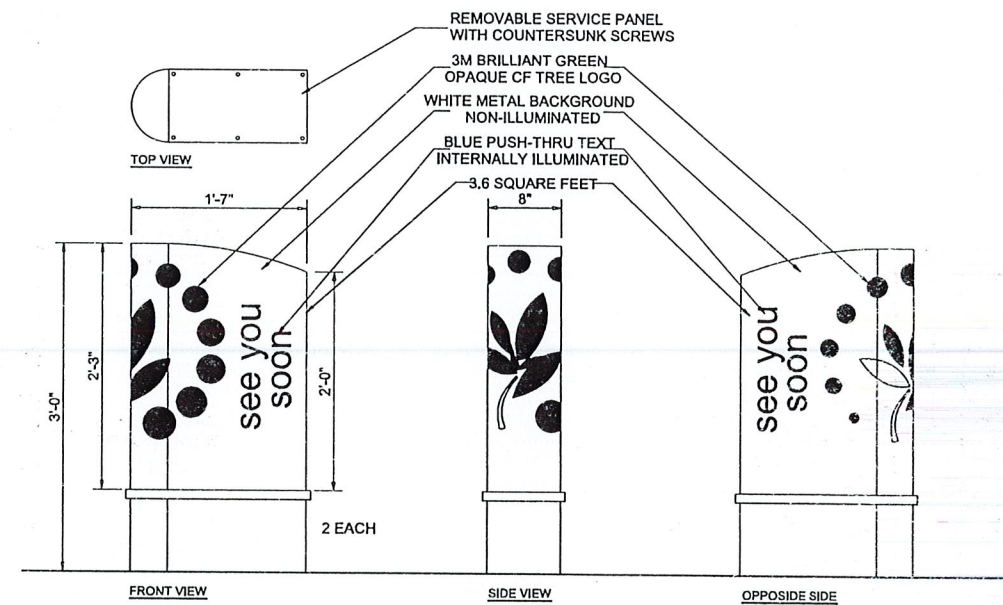
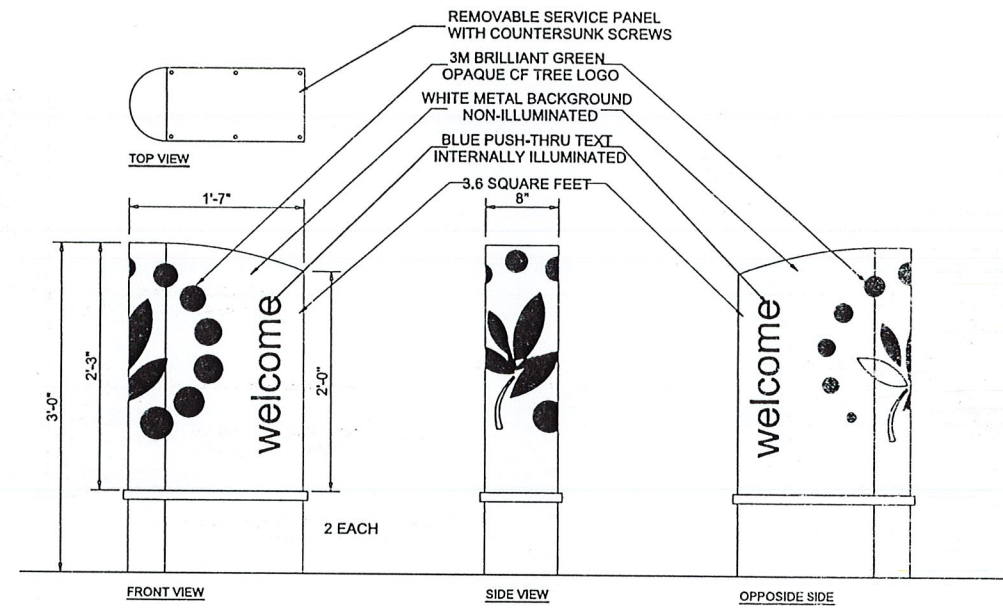
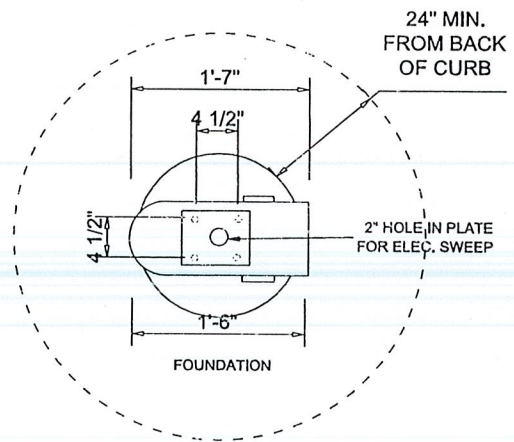
CITY CLERKS OFFICE
NEW BEDFORD, MA

2018 NOV 16 A 11:17




0-1 FOOTING DETAILS
scale 3/4"=1'-0"

NEW CONCRETE FOOTING



DIRECTIONAL SIGN DETAILS

REVISIONS			V# NEW	2904 & 2914 ACUSHNET AVENUE	
DATE	REV. BY.	DESCRIPTION	STORE# NEW		
			GAS STATION# NEW		



Cumberland
Farms

CUMBERLAND FARMS, INC.
165 Fairview Road
Westborough, Massachusetts 01581

SCALE: 1/2" = 1'-0"
DATE: 11/07/18
FILE: 17-1134
DRAWN BY:
CHECKED BY:

DIRECTIONAL SIGN DETAILS CFG13.2