

# Cree Edge™ Series

LED High Output Area/Flood Luminaire featuring Cree TrueWhite® Technology

## Product Description

The Cree Edge™ High Output Area/Flood luminaire is designed to deliver high lumen packages with precise optical control. The unit features a slim, low profile design that minimizes wind load and is available with two mounting options made with rugged die cast aluminum. The HV mount tenon is an adjustable arm that mounts to a horizontal or vertical 2" (51mm) IP, 2.375-2.50" (60-64mm) O.D. steel tenon. Tenon length must be a minimum of 3.75" (95mm). The direct mount bracket accessory allows for further mounting flexibility. The AA mount is an adjustable arm that mounts to a vertical 2" (51mm) IP, 2.375-3" (60-76mm) O.D. minimum 3.75" (95mm) tall tenon. The adjustable arm mount is for use in applications which have a vertical tenon and require a NEMA® Photocell Receptacle. Available with Cree TrueWhite® Technology, the Cree Edge™ High Output helps to beautifully render true colors and deliver value beyond energy savings.

**Applications:** Auto dealerships, parking lots, campuses, facade lighting, high-mast and general site lighting applications

## Performance Summary

Utilizes Cree TrueWhite® Technology on 5000K Luminaires

Patented NanoOptic® Product Technology

Made in the U.S.A. of U.S. and imported parts

**CRI:** Minimum 70 CRI (4000K & 5700K); 90 CRI (5000K)

**CCT:** 4000K (+/- 300K), 5000K (+/- 300K), 5700K (+/- 500K) standard

**Limited Warranty\*:** 10 years on luminaire/10 years on Colorfast DeltaGuard® finish

\* See <http://lighting.cree.com/warranty> for warranty terms

## Accessories

Field-Installed	
<b>Bird Spikes</b> XA-BRDSKXAK12 - 120 LED XA-BRDSKXAK24 - 240 LED	<b>Backlight Control Shields</b> XA-30BLS-4 - Four-pack for 120 LED - Unpainted stainless steel XA-30BLS-8 - Eight-pack for 240 LED - Unpainted stainless steel
<b>Direct Mount Bracket</b> EHO-UNV - Mounts to minimum 4" (102mm) round or square; aluminum or steel pole or can be surface-mounted directly to a vertical or horizontal surface - For use with HV mount only - Must specify finish color - See Direct Mount Configurations table on page 15 - Poles must be field-drilled for direct mount EHO-UNV	

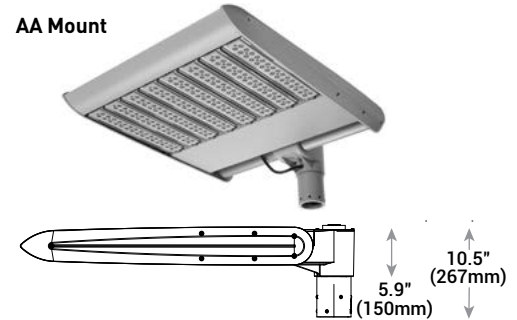
## Ordering Information

Example: ARE-EHO-2M-HV-12-E-UL-SV-700

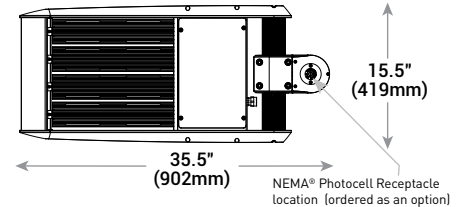
					E								
Product	Optic			Mounting*	LED Count (x10)	Series	Voltage	Color Options	Drive Current	Options			
ARE-EHO	1S Type I Short	2SB Type II Short w/BLS	4M Type IV Medium	AA Adjustable Arm	12 24	E	UL Universal 120-277V UH Universal 347-480V	BK Black BZ Bronze SV Silver WH White	700 700mA 1000 1000mA	DIM 0-10V Dimming - Control by others - Refer to <a href="#">Dimming spec sheet</a> for details - Can't exceed specified drive current	ML Multi-Level - Refer to <a href="#">ML spec sheet</a> for details - Intended for downlight applications at 0° tilt - Not available with UH voltage or 240 LEDs with 1000mA drive current	RL Rotate Left - Optic is rotated to the left	
	2M Type II Medium	2SP Type II Short w/Partial BLS	4MB Type IV Medium w/BLS	RR Rotate Right - Optic is rotated to the right									
	2MB Type II Medium w/BLS	3M Type III Medium	4MP Type IV Medium w/Partial BLS	40K 4000K Color Temperature - Minimum 70 CRI - Color temperature per luminaire									
	2MP Type II Medium w/Partial BLS	3MB Type III Medium w/BLS	5M Type V Medium	50K 5000K Color Temperature - Minimum 90 CRI - Utilizes Cree TrueWhite® Technology - Color temperature per luminaire									
FLD-EHO	2S Type II Short	3MP Type III Medium w/Partial BLS	AF Automotive Frontline-Optic™	HV Horizontal/Vertical Tenon - Available with Direct Mount Bracket when ordered with EHO-UNV field-installed accessory (see table above) - Not for use with NEMA receptacle when mounted to vertical tenon						F Fuse - When code dictates fusing, use time delay fuse - Refer to <a href="#">ML spec sheet</a> for availability with ML options - Available for U.S. applications only	R NEMA® Photocell Receptacle - 3-pin receptacle per ANSI C136.10 - Vertical tenon applications require use of AA mount - Photocell and shorting cap by others - Refer to <a href="#">ML spec sheet</a> for availability with ML options		
	15 15° Flood	40 40° Flood	SN Sign										
	25 25° Flood	70 70° Flood	N6 NEMA® 6										

\* Reference EPA and pole configuration suitability data beginning on page 14

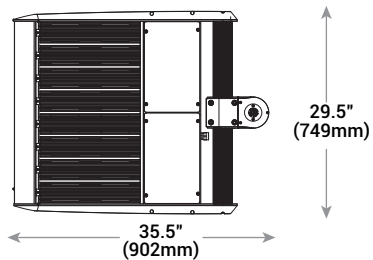
## AA Mount



## 120 LED



## 240 LED



LED Count (x10)	Weight
12	45.3 lbs. (20.5kg)
24	80.5 lbs. (36.5kg)

**HV Mount and Direct Mount Bracket** - see page 16 for weight & dimensions



Rev. Date: V9 10/02/2018



US: [lighting.cree.com](http://lighting.cree.com)

T (800) 236-6800 F (262) 504-5415

Canada: [www.cree.com/canada](http://www.cree.com/canada)

T (800) 473-1234 F (800) 890-7507

## Product Specifications

### CREE TRUEWHITE® TECHNOLOGY

A revolutionary way to generate high-quality white light, Cree TrueWhite® Technology is a patented approach that delivers an exclusive combination of 90+ CRI, beautiful light characteristics and lifelong color consistency, all while maintaining high luminous efficacy – a true no compromise solution.

### CONSTRUCTION & MATERIALS

- Slim, low profile, minimizing wind load
- Luminaire sides are rugged die cast aluminum with integral, weathertight LED driver compartments and high performance heat sinks
- HV mount – adjustable arm that mounts to a horizontal or vertical 2" (51mm) IP, 2.375-2.50" (60-64mm) O.D. steel tenon. Tenon length must be a minimum of 3.75" (95mm). **Not for use with NEMA receptacle when mounted to vertical tenon**
- AA mount – adjustable mounting arm is rugged die cast aluminum and mounts to 2" (51mm) IP, 2.375-3" (60-76mm) O.D. minimum 3.75" (95mm) tall vertical tenon
- Surface-mount directly to a vertical or horizontal surface with field-installed EHO-UNV direct mount bracket (accessory (refer to table on page 1)
- Luminaire may be field adjusted for use in uplight position. Please refer to installation instructions for details
- Extruded aluminum adjustable mounting shaft
- Luminaire is adjustable from horizontal 90° towards pole and 120° away from pole
- Exclusive Colorfast DeltaGuard® finish features an E-Coat epoxy primer with an ultra-durable powder topcoat, providing excellent resistance to corrosion, ultraviolet degradation and abrasion. Silver, bronze, black, and white are available
- **Weight:** See weight charts on pages 1 and 16

### ELECTRICAL SYSTEM

- **Input Voltage:** 120-277V or 347-480V, 50/60Hz, Class 1 drivers
- **Power Factor:** > 0.9 at full load
- **Total Harmonic Distortion:** < 20% at full load
- Integral 10kV surge suppression protection standard
- When code dictates fusing, a slow blow fuse or type C/D breaker should be used to address inrush current
- **Maximum 10V Source Current:** 120 LED: 0.40mA; 240 LED: 0.80mA

### REGULATORY & VOLUNTARY QUALIFICATIONS

- cULus Listed
- Suitable for wet locations
- Consult factory for CE Certified products
- 10kV surge suppression protection tested in accordance with IEEE/ANSI C62.41.2
- Meets FCC Part 15, Subpart B, Class A standards for conducted and radiated emissions
- Certified to ANSI C136.31-2001, 3G bridge and overpass vibration standards
- Luminaire and finish endurance tested to withstand 5,000 hours of elevated ambient salt fog conditions as defined in ASTM Standard B 117
- Meets Buy American requirements within ARRA
- RoHS compliant. Consult factory for additional details
- **CA RESIDENTS WARNING:** Cancer and Reproductive Harm – [www.p65warnings.ca.gov](http://www.p65warnings.ca.gov)

Electrical Data*							
LED Count (x10)	System Watts 120-480V	Total Current (A)					
		120V	208V	240V	277V	347V	480V
700mA							
12	267	2.24	1.29	1.12	0.99	0.80	0.58
24	533	4.49	2.57	2.24	1.97	1.62	1.16
1000mA							
12	421	3.61	2.06	1.80	1.61	1.25	0.90
24	831	7.16	4.04	3.54	3.14	2.50	1.81

\* Electrical data at 25°C (77°F). Actual wattage may differ by +/- 10% when operating between 120-480V +/- 10%

Recommended Cree Edge™ High Output Series Lumen Maintenance Factors (LMF) <sup>1</sup>					
Ambient	Initial LMF	25K hr Projected <sup>2</sup> LMF	50K hr Projected <sup>2</sup> LMF	75K hr Calculated <sup>3</sup> LMF	100K hr Calculated <sup>3</sup> LMF
5°C (41°F)	1.04	1.01	0.99	0.98	0.96
10°C (50°F)	1.03	1.00	0.98	0.97	0.95
15°C (59°F)	1.02	0.99	0.97	0.96	0.94
20°C (68°F)	1.01	0.98	0.96	0.95	0.93
25°C (77°F)	1.00	0.97	0.95	0.94	0.92

<sup>1</sup> Lumen maintenance values at 25°C are calculated per TM-21 based on LM-80 data and in-situ luminaire testing

<sup>2</sup> In accordance with IESNA TM-21-11, Projected Values represent interpolated value based on time durations that are within six times (6X) the IESNA LM-80-08 total test duration (in hours) for the device under testing ((DUT) i.e. the packaged LED chip)

<sup>3</sup> In accordance with IESNA TM-21-11, Calculated Values represent time durations that exceed six times (6X) the IESNA LM-80-08 total test duration (in hours) for the device under testing ((DUT) i.e. the packaged LED chip)

## LED 4" RESIDENTIAL RECESSED RETROFIT DOWNLIGHT

### RR4-L4 SERIES



### FEATURES:

- High lumen transmission and diffusing for even illumination
- Supplied with E26 base adapter
- Virtually no UV emitted
- Five year limited warranty
- Suitable for wet locations
- High CRI models comply with Title 24 code

### CONSTRUCTION:

- One-piece durable die-cast aluminum heat sink with integrated trim
- Module construction includes LED, heat sink, lens and white trim
- Impact-resistant plastic lens
- Fits recessed cans with torsion spring ('C' Shaped) brackets

### ELECTRICAL:

- 120V, 60Hz
- Dimmable down to 10% (see page 2 for a list of compatible dimmers)
- L70 of 35,000 hours
- Power factor: > .99

### PRODUCT DESCRIPTION:

Constructed with a high-efficacy LED array and dimmable driver, the 4-inch Downlight Retrofit features an optical diffuser that produces high lumen transmission and even illumination. The fixtures are suitable for damp locations. This four-inch downlight retrofit is the economical solution for consumers looking to reduce energy costs. These retrofits are offered in a variety of CRI options and lumen packages appropriate for residential applications.

#### MODEL SELECTION (Full Order List On Page 2)

Typical order example: RR41227WC-L4

RR	4		27	W		-L4
FAMILY	SIZE	WATTAGE (NOMINAL)	CCT	TRIM	CRI	VERSION
RR= Residential Recessed Retrofit Downlight	4= 4"	11= 11W 12= 12W	27= 2700K	W= White	(OMIT) = 80 CRI C= 90 CRI	-L4= Version 4

#### ACCESSORY

ORDER CODE	MODEL NUMBER	DESCRIPTION
74216	MLRR-E26ADAPT	E26 socket adapter (Included)
73552	MLRR-GUADAPT	GU24 socket adapter

#### NOTES:

1. Additional CCT are available, contact MaxLite for more information.

## SPECIFICATIONS:

		RR41127W-L4	RR41227WC-L4
ITEM	SPECIFICATION	DETAILS	DETAILS
GENERAL PERFORMANCE	Power Consumption (W)	10.6	11.7
	Lumens Delivered (lm)	760	760
	Efficacy (lm/W)	72	65
	CRI	≥80	≥90
	Incandescent Equivalent (w)	50	
	Color Temperature (CCT)	2700K (Additional CCT available, contact MaxLite for info.)	
	L70 Lifetime (hours)	35,000	
	Color Consistency	Proprietary binning for uniform color	
ELECTRICAL	Power Factor	0.99	
	Input Voltage	120V	
	Compatible Dimmers	See List of Compatible Dimmers	
PHYSICAL	Weight	2 lbs	
	Mounting	Mounts into existing recessed frame	
	Operating Temperature	-4°F to 104°F	
	Humidity	20-85% RH, non-condensing	
CERTIFICATION	Certification	Energy Star, cULus, LM-79, FCC	
	Material Usage	RoHS compliant; no mercury	
	Environment	Indoor	
	Warranty	5 years	

## ORDERING:

ORDER CODE	MODEL NUMBER	WATTS	INC. EQUIVALENT	LUMENS	CRI	LAMP LIFE (HRS.)	DIMENSIONS DIA" X H"	CCT
76802	RR41127W-L4	11	50W	760	80	35,000	5.1" X 3.67"	2700
76808	RR41130W-L4	11	50W	760	90	35,000	5.1" X 3.67"	3000
76815	RR41227WC-L4	12	50W	760	90	35,000	5.1" X 3.67"	2700
76814	RR41230WC-L4	12	50W	760	90	35,000	5.1" X 3.67"	3000

## DIMMER LIST:

DIMMER LIST	RR411XXW	RR412XXWC
GE 18024 600W	OK	OK
LEVITON IPI06 600W	OK	OK
LEVITON 6631-LA 600W	OK	OK
LEVITON 6684 600W	NO	OK

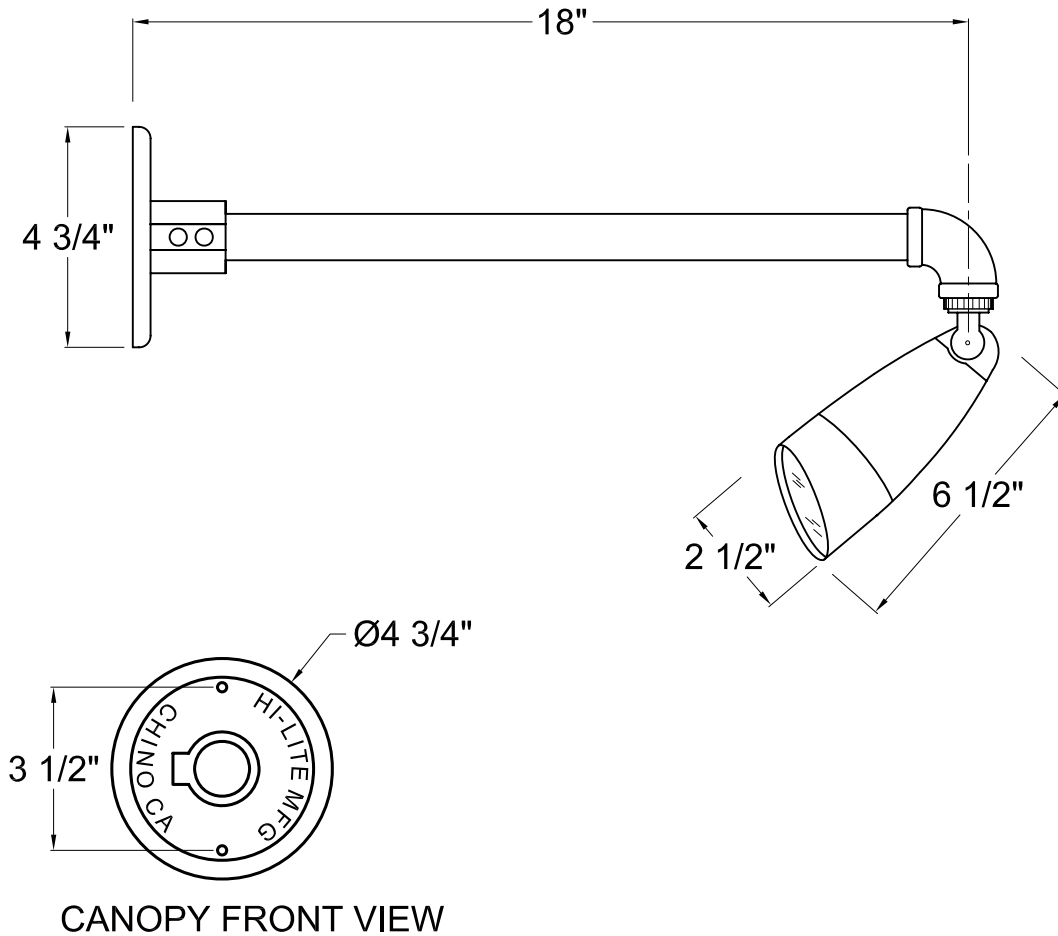
DIMMER LIST	RR411XXW	RR412XXWC
LUTRON DV-603PR 600W	OK	OK
LUTRON DV-603P 600W	OK	OK
LUTRON LGCL-153CL 600W	OK	OK
LUTRON S-600 600W	OK	OK
TOP HCL453PTC	OK	OK
TOP HCL453PW	OK	OK



# HI-LITE MFG. CO., INC.

13450 Monte Vista Avenue  
Chino, California 91710  
Telephone: (909) 465-1999  
Toll Free: (800) 465-0211  
Fax: (909) 465-0907  
www.hilitemfg.com

JOB NAME:		
SCALE: <b>N.T.S.</b>	DATE: <b>09/25/2014</b>	TYPE: <b>WSCXC-2</b>
DRAWN BY: <b>S.M.-D</b>	QTY:	
SHEET:		REV:



Item Number	Wattage	Voltage
GU10-119/18-1-119	50W	120V

**Finish**  
119-Bronze

**Mounting**  
Wall Mount

**Lamp/Socket**  
GU10

# HAWK - model: WP-LED2

## Endurance Wallpack

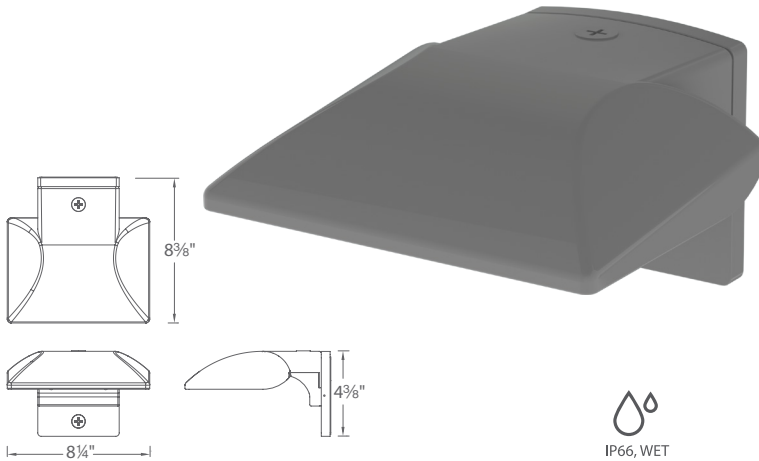
WAC LIGHTING  
Responsible Lighting®

Fixture Type:

Catalog Number:

Project:

Location:



### SPECIFICATIONS

**Construction:** Die-cast aluminum

**Power:** Integral driver in luminaire. Universal voltage input (120V-277V)

**Dimming:** 100% - 30% with 0 - 10V dimmer (120V - 277V)

100% - 15% with Electronic Low Voltage (ELV) dimmer (120V only)

**Finish:** Architectural Bronze, Graphite, and White

**Standards:** IP66, Wet Location, ETL & cETL Listed

**Total Harmonic Distortion:** 35%

**Operating Temperature:** -40°C (-40°F) to 40°C (104°F)

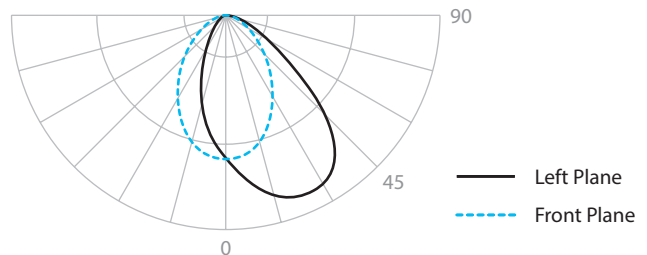
### PRODUCT DESCRIPTION

Die cast aluminum factory sealed housings with patent pending design for a water and dust proof IP66 rated outdoor luminaire

### FEATURES

- Factory-Sealed LED Light Engine
- Die-Cast Aluminum Construction
- 20° Forward Throw Illumination
- Photo/Motion Sensor Compatible (Sold Separately)
- Built-in Level For Easy Adjustment
- Suitable to install in all directions
- Multi-Function Dimming: ELV (120V) or 0-10V
- 85 CRI
- 100,000 hour rated life

### PHOTOMETRY



### ORDER NUMBER

		Power	Comparable	Color Temp	Delivered Lumens	CBCP	Finish
	<b>WP-LED219</b>	19W	39W HID	<b>30</b> 3000K	1345	1022	<b>aBZ</b> Architectural Bronze <b>aGH</b> Architectural Graphite <b>aWT</b> Architectural White
				<b>50</b> 5000K	1435	1056	
	<b>WP-LED227</b>	27W	70W HID	<b>30</b> 3000K	2050	1436	
				<b>50</b> 5000K	2095	1478	

Example: WP-LED219-30-GH

### ACCESSORIES

Motion Sensor  
(120V)

**MS-120-BZ** Bronze  
**MS-120-GY** Gray  
**MS-120-WT** White

Photo Sensor  
(120V)

**PC-120-BZ** Bronze  
**PC-120-GY** Gray  
**PC-120-WT** White

WAC Lighting  
www.waclighting.com  
Phone (800) 526.2588 • Fax (800) 526.2585

Headquarters/Eastern Distribution Center  
44 Harbor Park Drive • Port Washington, NY 11050  
Phone (516) 515.5000 • Fax (516) 515.5050

Western Distribution Center  
1750 Archibald Avenue • Ontario, CA 91760  
Phone (800) 526.2588 • Fax (800) 526.2585