

Tetrault Insurance Agency | 4317 Acushnet Avenue, New Bedford, MA | Design Development | January 19, 2018

CITY CLERKS OFFICE
NEW BEDFORD, MA
2018 JUN 15 A 10:22
CITY CLERK



TETRAULT
INSURANCE AGENCY, INC.
We protect you like family


4317 Acushnet Avenue
New Bedford, MA

Project: 14268
Tetrault Insurance Agency

Sales: Stephanie Poyant Moran
Date: 11.10.17
Designer: JN

Note:
This is an original unpublished drawing created by Poyant Signs, Inc. It is submitted for your personal use in connection with a project being planned for you by Poyant Signs, Inc. It is not to be shown to anyone outside your organization, nor is it to be reproduced, copied or exhibited in any fashion until transferred.

Revisions:
01.09.18 JN added to package
01.19.18 ST added setback

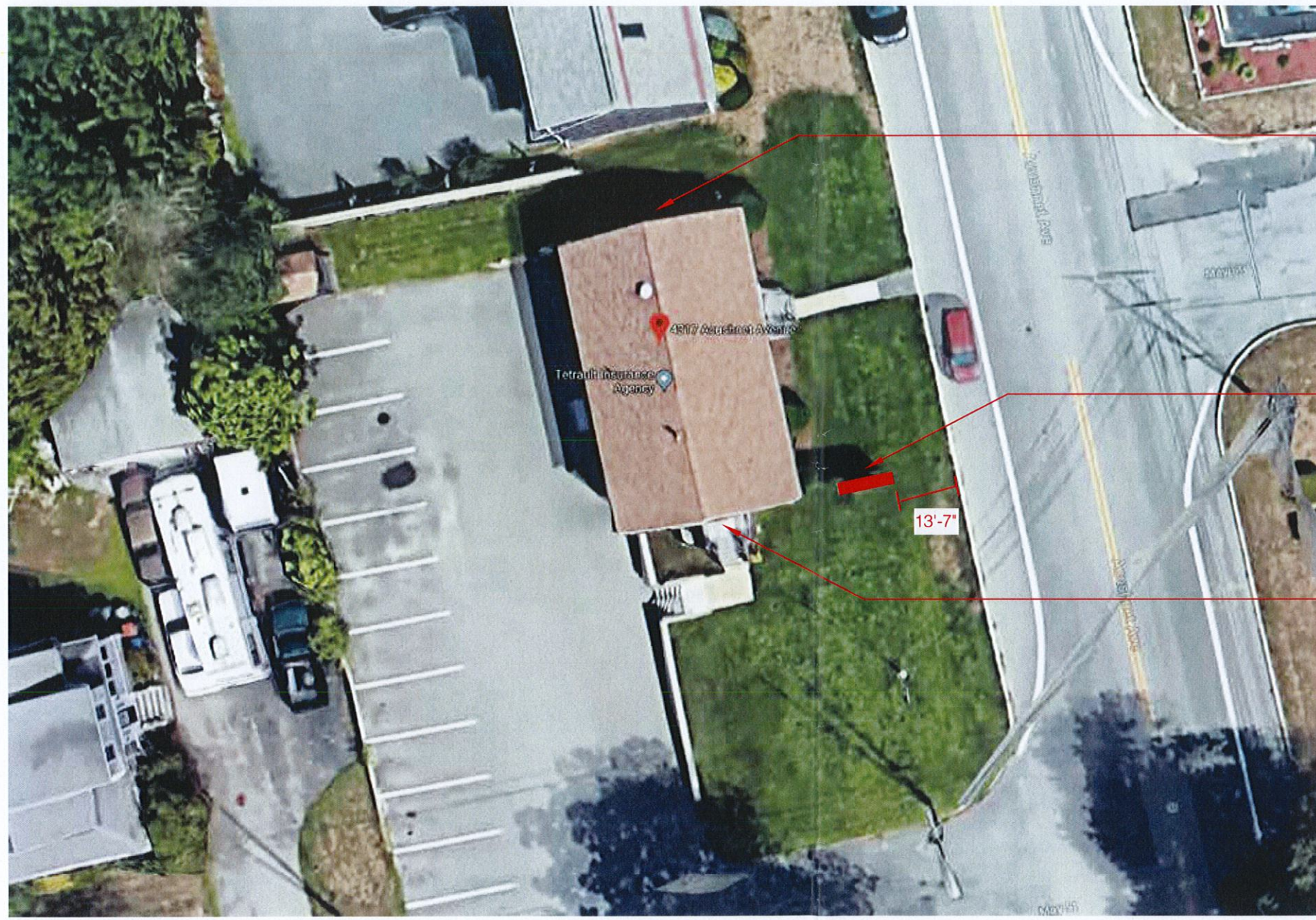

This sign is intended to be installed in accordance with the requirements of Article 600 of the National Electrical Code and / or other applicable local codes. This includes proper grounding and bonding of the sign.

Approved By:

Date:

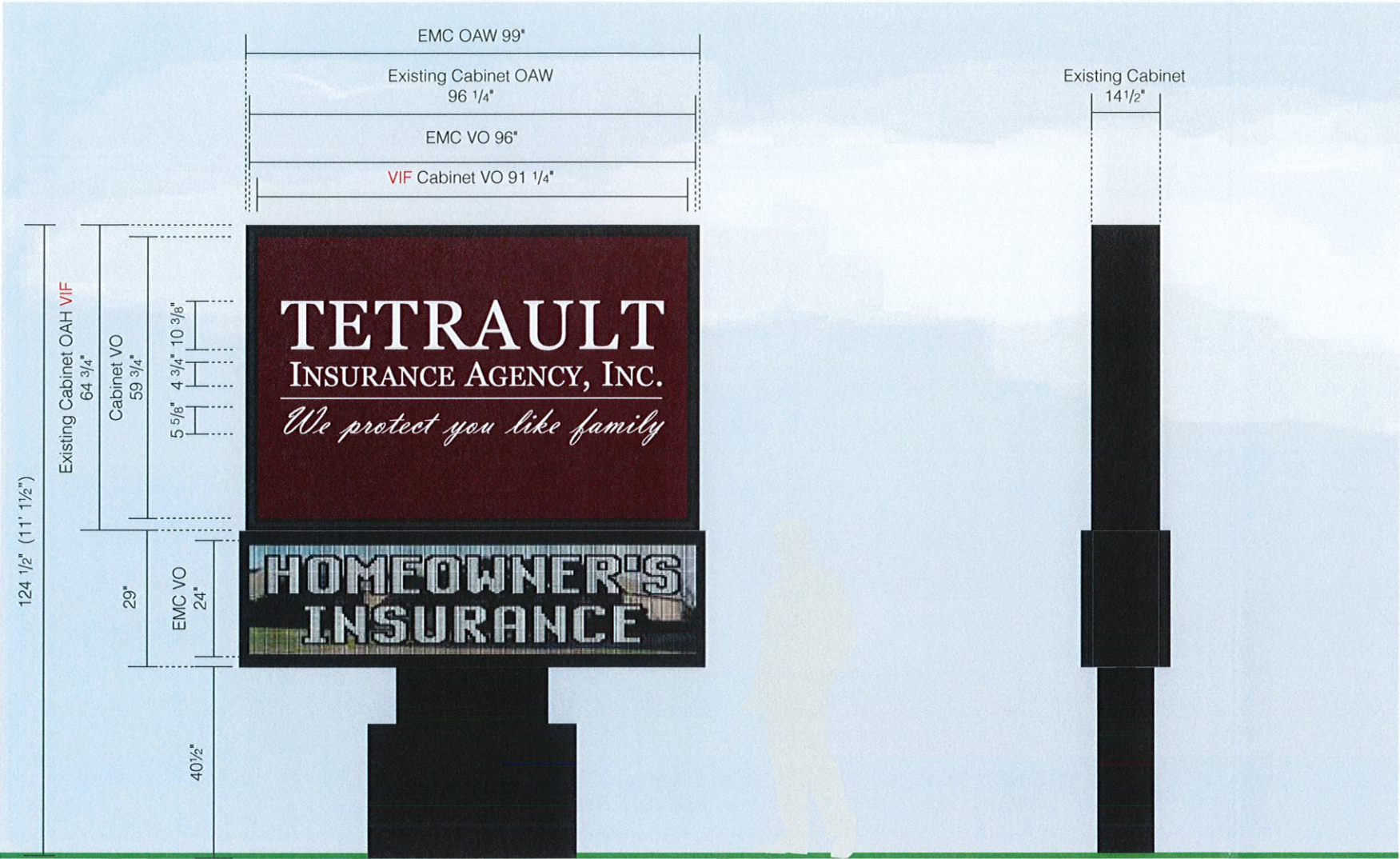
Monument Sign

Location Plan



A Sign Location Plan
Not to Scale

CITY CLERK
2018 JUN 15 A 10: 22
CITY CLERKS OFFICE
NEW BEDFORD, MA



Existing: 42.61 Sq Ft



C Photo Comp - Existing
Not to Scale

Proposed: 55.34 Sq Ft



D Photo Comp - Proposed
Not to Scale

Specifications

Qty = 1 55.34 Sq Ft

Refurbish Existing Double Face Internally Illuminated Monument Sign

- * Remove & Dispose of Existing Lexan Faces
- * Remove & Dispose of Existing Manual Reader Board and Single Hinge Frame and Clear Cover
- * Remove & Dispose of Divider Bar
- * Remove & Dispose of Existing Illumination

*Remove Existing Cabinet & Re-Install on Existing Pole with Stub Pole

- Increase height of existing pole with a stub pole installed in field (size, shape & height to be determined by survey)
- Existing cabinet and base sanded, primed and painted in the field
- Top cabinet to be refaced with 3/16" white lexan faces
- Translucent vinyl applied to the first surface
- New white LED illumination
- New power supplies
- (Qty:2) 5" deep face vent 16mm full color EMC units mounted to each side of existing pole in the field as required
- Edges of EMCs to be clad with aluminum to give the appearance of a single unit
- 4" Character Height
- Broadband communication
- (Qty:1) grounding rod per EMC unit

VIF

- * Existing Pole Size, Quantity, Condition & Cabinet Construction
Please Take Photos
- * Existing Foundation Size & Condition to Determine if It Can Handle Added Weight & Wind Load
- * Please Confirm OAH & VO of Existing Cabinet; Conflicting Measurements in Survey Info
- * Please Confirm if Existing Sign Illuminates; If So, What Voltage & Where Electrical Comes From

Colors & Materials

Paint

Black; Satin Finish

Vinyl

Burgundy 3M 3630-49

CITY CLERK
2018 JUN 15 A 10:22
CITY CLERKS OFFICE
NEW BEDFORD, MA

Poyant
Building Your Brand

125 Samuel Barnett Boulevard
New Bedford, MA 02745
800.544.0961 | poyantsigns.com

TETRAULT
INSURANCE AGENCY, INC.
We protect you like family

4317 Acushnet Avenue
New Bedford, MA

Project: 14268
Tetrault Insurance Agency

Sales: Stephanie Poyant Moran
Date: 11.10.17
Designer: JN

Note:
This is an original unpublished drawing created by Poyant Signs, Inc. It is submitted for your personal use in connection with a project being planned for you by Poyant Signs, Inc. It is not to be shown to anyone outside your organization, nor is it to be reproduced, copied or exhibited in any fashion until transferred.

Revisions:
11.28.17 JN Option added to package
12.20.17 JN Pedestal change to black; "insurance agency" to white
01.19.18 ST Added Exist. Sq Ft



This sign is intended to be installed in accordance with the requirements of Article 600 of the National Electrical Code and / or other applicable local codes. This includes proper grounding and bonding of the sign.

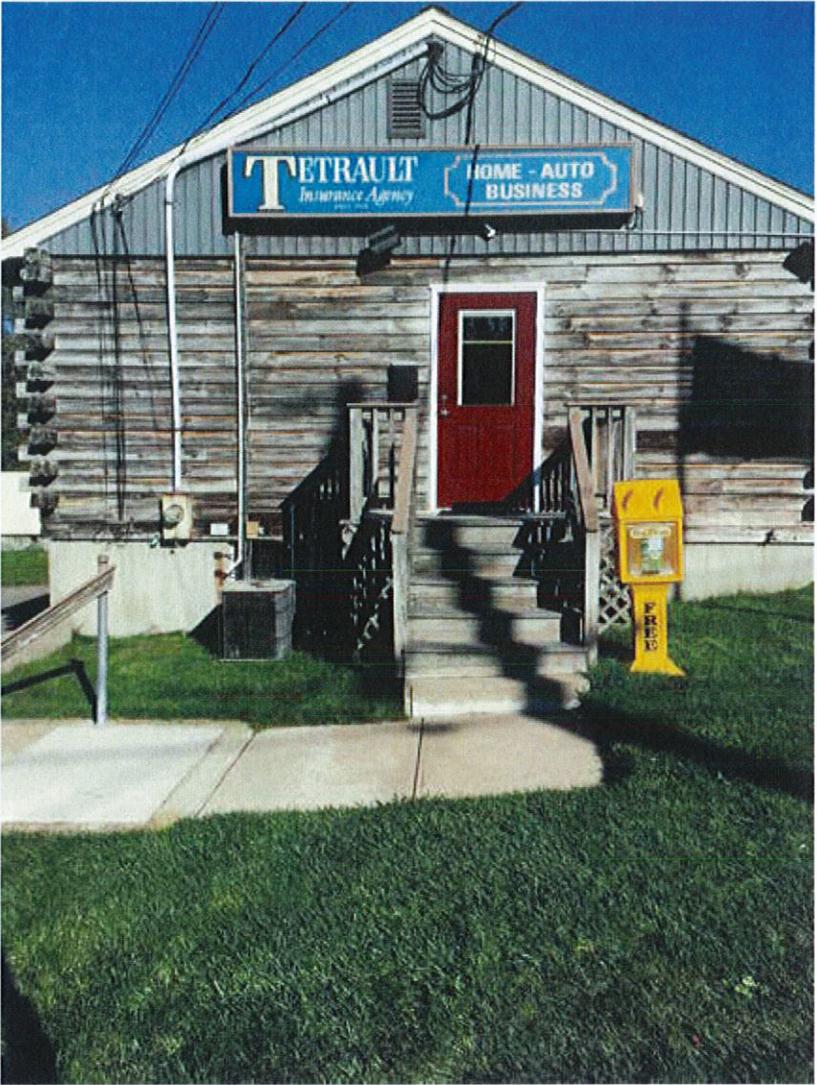
Approved By:

Date:

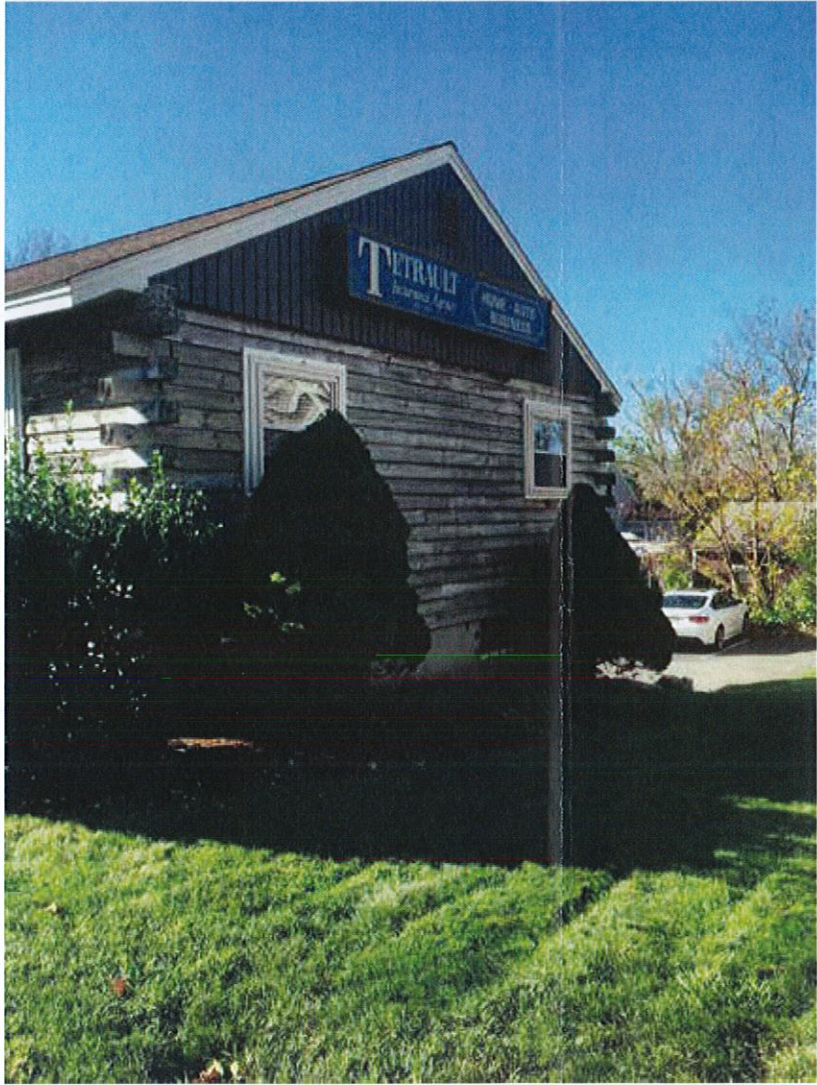
Refurbish Existing Pylon Sign

Option C

Sign Type 14268.1C-R2 1C.1



A Photo of Existing
Not to Scale



B Photo of Existing
Not to Scale

Specifications
Qty = 2

Remove & Dispose of Existing Single Face Illuminated Signs

VIF
* Please Confirm if Patch & Paint by Poyant or Others
* Please Confirm if Poyant to Disconnect and Cap Electrical or By Others

CITY CLERKS OFFICE
NEW BEDFORD, MA
2018 JUN 15 A 10:22
CITY CLERK

Poyant
Building Your Brand

125 Samuel Barnet Boulevard
New Bedford, MA 02745
800.544.0961 | poyantsigns.com

TETRAULT
INSURANCE AGENCY, INC.
We protect you like family


4317 Acushnet Avenue
New Bedford, MA

Project: 14268
Tetrault Insurance Agency

Sales: Stephanie Poyant Moran
Date: 11.10.17
Designer: JN

Note:
This is an original unpublished drawing created by Poyant Signs, Inc. It is submitted for your personal use in connection with a project being planned for you by Poyant Signs, Inc. It is not to be shown to anyone outside your organization, nor is it to be reproduced, copied or exhibited in any fashion until transferred.

Revisions:

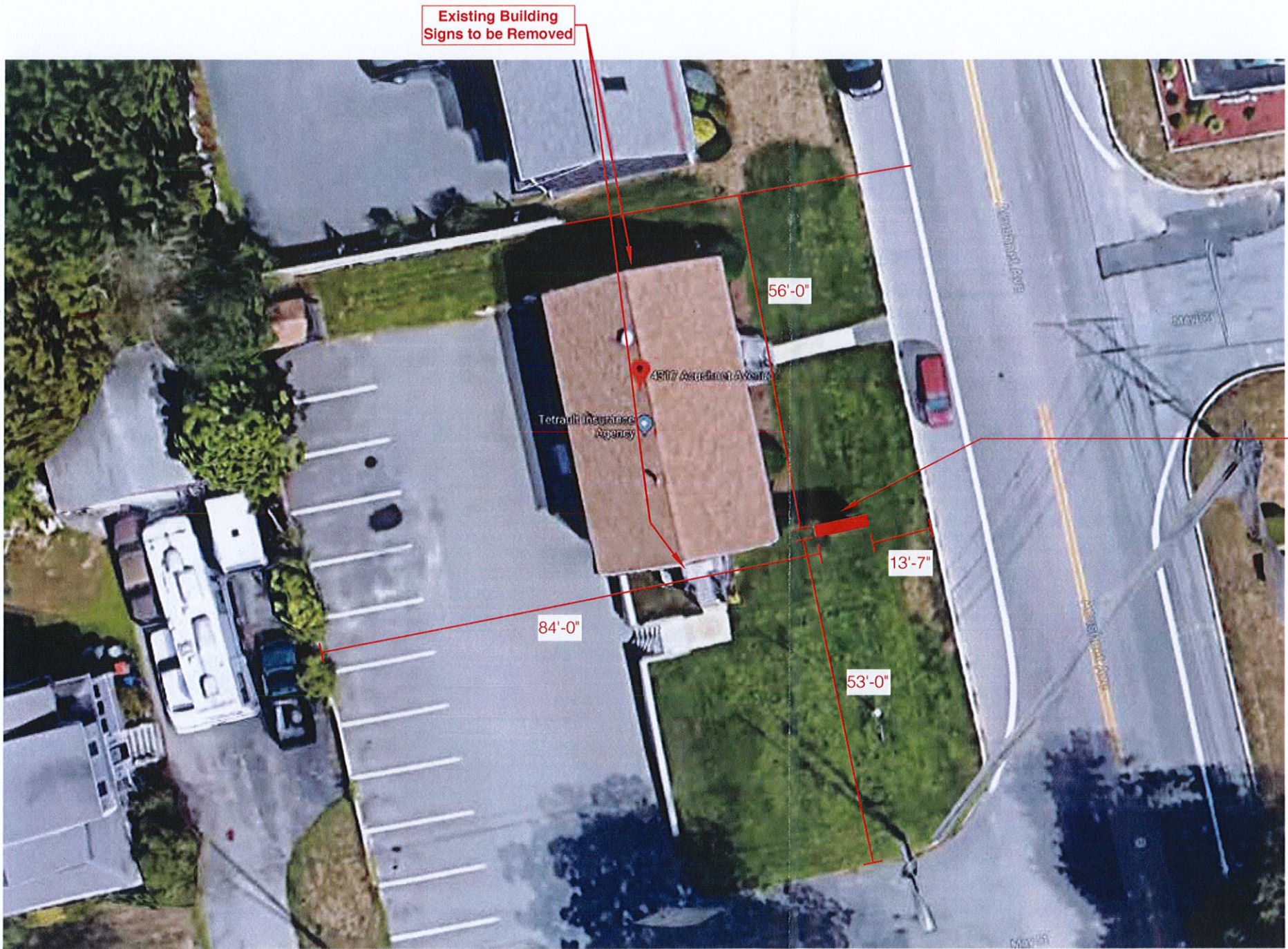

This sign is intended to be installed in accordance with the requirements of Article 600 of the National Electrical Code and / or other applicable local codes. This includes proper grounding and bonding of the sign.

Approved By: _____

Date: _____

Refurbish Existing Pylon Sign

Option A



A Sign Location Plan
Not to Scale

CITY CLERK
2018 JUN 15 A 10:22
CITY CLERKS OFFICE
NEW BEDFORD, MA



125 Samuel Barnett Boulevard
New Bedford, MA 02745
800.544.0961 | poyantsigns.com

TETRAULT
INSURANCE AGENCY, INC.
We protect you like family


4317 Acushnet Avenue
New Bedford, MA

Project: 14268
Tetrault Insurance Agency

Sales: Stephanie Poyant Moran
Date: 11.10.17
Designer: JN

Note:
This is an original unpublished drawing created by Poyant Signs, Inc. It is submitted for your personal use in connection with a project being planned for you by Poyant Signs, Inc. It is not to be shown to anyone outside your organization, nor is it to be reproduced, copied or exhibited in any fashion until transferred.

Revisions:
01.09.18 JN added to package
01.19.18 ST added setback
06.14.18 ST added additional measurements

 This sign is intended to be installed in accordance with the requirements of Article 600 of the National Electrical Code and / or other applicable local codes. This includes proper grounding and bonding of the sign.

Approved By: _____

Date: _____

Monument Sign

Location Plan