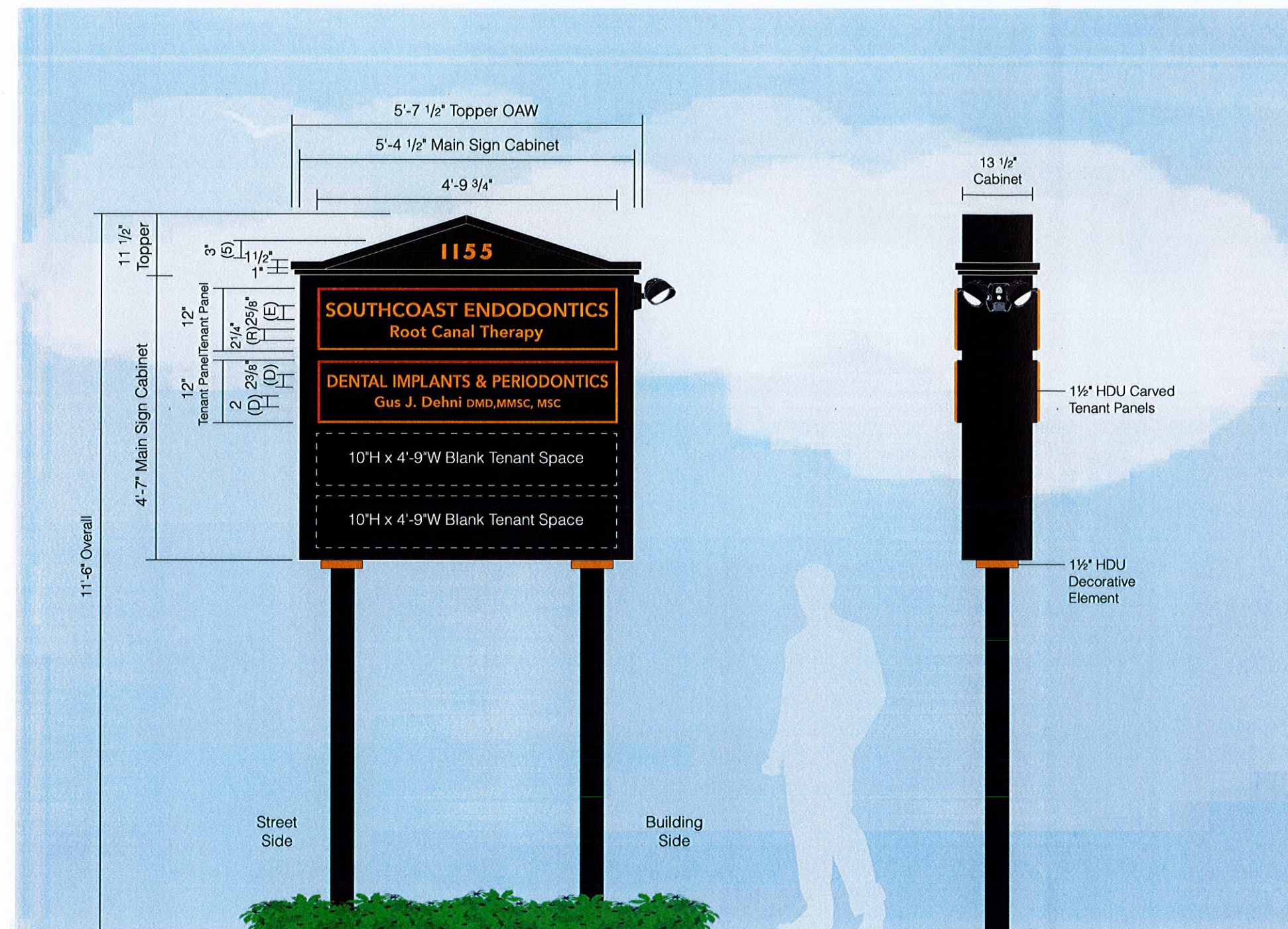


Foster Hill Professional Center | 1155 Purchase Street New Bedford, MA 02740 | Design Development | June 14, 2018

CITY CLERKS OFFICE
NEW BEDFORD, MA
2018 JUN 15 P 2:18
CITY CLERK

Poyant
Building Your Brand



(A) Sign Elevation - Front View
Scale: 1/2"=1'-0"

(B) Sign Elevation - Side View
Scale: 1/2"=1'-0"



(C) Detail - Carved Letter Sample - Front View
Scale: 1 1/2"=1'-0"



(D) Detail - Carved Panel Sample - Side View
Scale: 1 1/2"=1'-0"

Specifications

Qty = 1 31.17 Sq Ft Per Side

Double Face Non-Illuminated Pylon Sign

* Remove & Dispose of Existing Sign, Poles and Foundation

- Topper will be custom fabricated aluminum angle frame w/ .090 aluminum faces painted black
- Topper faces will have black smaltz background w/ 1/2" thick clear acrylic numbers painted gold
- 13 1/2" Deep Large A cabinet with 2 1/2" flat retainers painted black
- Faces will be .090 aluminum painted black
- Tenant panels will be 1 1/2" thick HDU painted black w/ v-groove carved letters & 1/2" beveled edges painted gold
- Tenant panels will be mechanically fastened to aluminum face
- (Qty: 2) 4" sch 40 round steel poles painted black w/ 1 1/2" HDU decorative elements painted gold
- (Qty: 2) Direct burial foundations of 1'-9"W x 3'-9"W x 4'-0" deep

- External flood lighting for parking lot to be secured to top side of cabinet as required

- VIF
- Confirm overall height of existing poles
 - Confirm overall size of existing cabinet
 - Confirm electrical is street side

Colors & Materials

Paint

Black, Satin Finish

Bright Gold Metallic; Akzo Nobel SIGN91260

Smaltz

Black

Poyant
Building Your Brand

125 Samuel Barnett Boulevard
New Bedford, MA 02745
800.544.0961 | poyantsigns.com

Foster Hill
Professional Center

1155 Purchase Street
New Bedford MA

Project: 14523
Foster Hill Professional Center

Sales: Bethany Leonard
Date: 02.07.18
Designer: JST

Note:
This is an original unpublished drawing created by Poyant Signs, Inc. It is submitted for your personal use in connection with a project being planned for you by Poyant Signs, Inc. It is not to be shown to anyone outside your organization, nor is it to be reproduced, copied or exhibited in any fashion until transferred.

Revisions:

5.10.18 LR R1 scope
5.29.18 LR R2 larger w/added text on top panel, ht increased
6.8.18 LR R3 type change, 2nd panel ht increase



This sign is intended to be installed in accordance with the requirements of Article 600 of the National Electrical Code and / or other applicable local codes. This includes proper grounding and bonding of the sign.

Approved By:

Date:

Pylon Sign

Option A

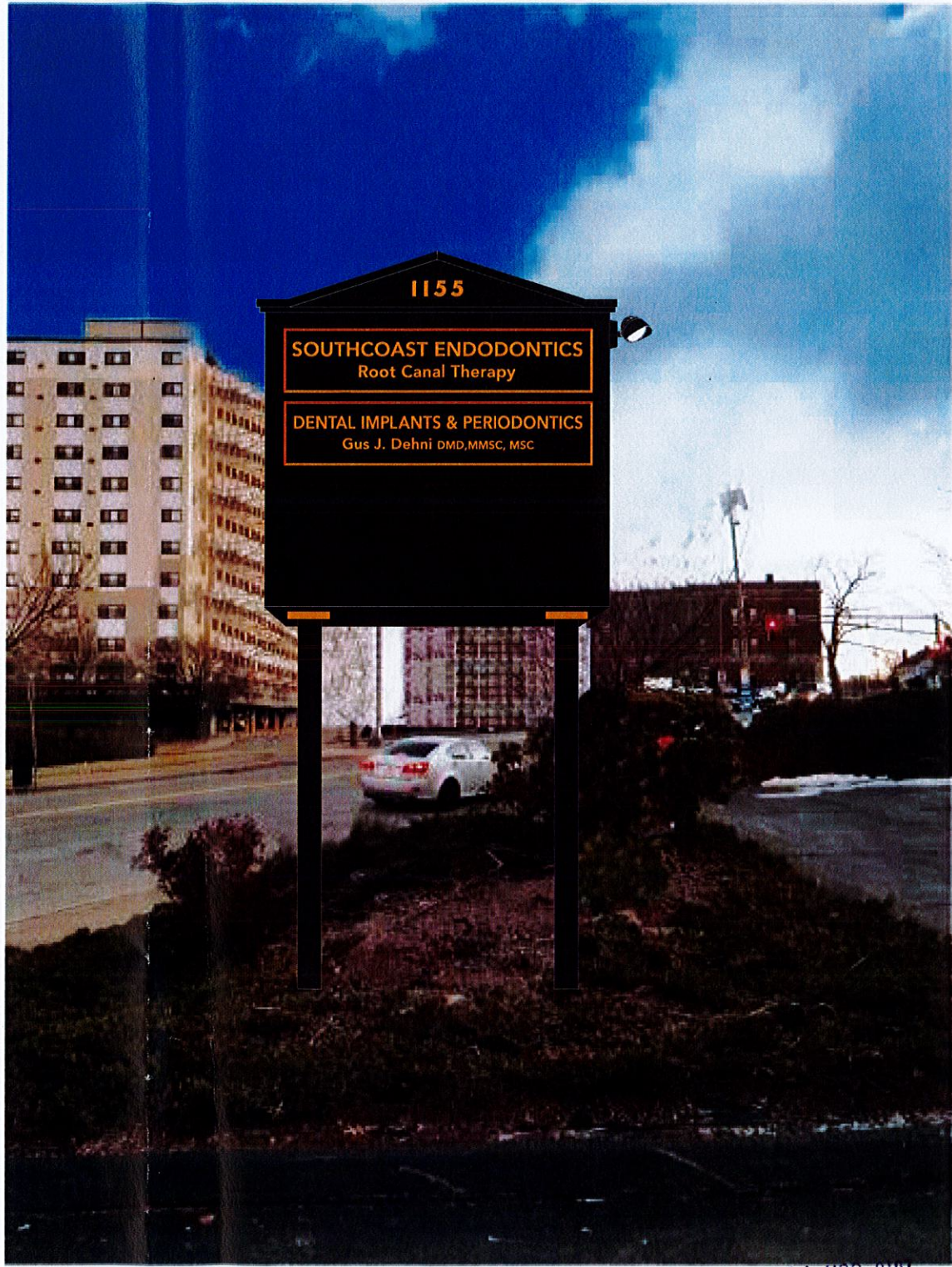
Sign Type 14523.1A-R3

1A.1

CITY CLERK
2018 JUN 15 P 2:19
CITY CLERKS OFFICE
NEW BEDFORD, MA



A Photo Comp - Existing
Not to Scale



B Photo Comp - Proposed
Not to Scale

2018 JUN 15 P 2:19
CITY CLERKS OFFICE
NEW BEDFORD, MA

Poyant
Building Your Brand

125 Samuel Barnet Boulevard
New Bedford, MA 02745
800.544.0961 | poyantsigns.com

Foster Hill
Professional Center

1155 Purchase Street
New Bedford MA

Project: 14523
Foster Hill Professional Center

Sales: Bethany Leonard
Date: 02.07.18
Designer: JST

Note:
This is an original unpublished drawing created by Poyant Signs, Inc. It is submitted for your personal use in connection with a project being planned for you by Poyant Signs, Inc. It is not to be shown to anyone outside your organization, nor is it to be reproduced, copied or exhibited in any fashion until transferred.

Revisions:

5.10.18 LR R1 scope
5.29.18 LR R2 larger w/added text on top panel, ht increased
6.8.18 LR R3 type change, 2nd panel ht increase



This sign is intended to be installed in accordance with the requirements of Article 600 of the National Electrical Code and / or other applicable local codes. This includes proper grounding and bonding of the sign.

Approved By:

Date:

Monument Sign

Option A

Sign Type 14523.1A-R3

1A.2



New Proposed Sign



A Site Plan
Not to Scale

B Close Up of Site Plan
Not to Scale

**Foster Hill
Professional Center**

1155 Purchase Street
New Bedford MA

Project: 14523
Foster Hill Professional Center

Sales: Bethany Leonard
Date: 02.07.18
Designer: JST

Note:
This is an original unpublished drawing created by Poyant Signs, Inc. It is submitted for your personal use in connection with a project being planned for you by Poyant Signs, Inc. It is not to be shown to anyone outside your organization, nor is it to be reproduced, copied or exhibited in any fashion until transferred.

Revisions:

- 5.10.18 LR R1 scope
- 5.29.18 LR R2 larger w/added text on top panel, ht increased
- 6.8.18 LR R3 type change, 2nd panel ht increase
- 6.14.18 JST R4 Added site plan



This sign is intended to be installed in accordance with the requirements of Article 600 of the National Electrical Code and / or other applicable local codes. This includes proper grounding and bonding of the sign.

Approved By:

Date:

Site Plan