

Parallel Products | 100 Duchaine Blvd, New Bedford, MA | Design Development | November 15, 2017

Poyant
Building Your Brand

CASE # 42-17

RECORD OWNER:
ASSESSORS MAP 134 LOT 5
SM REAL ESTATE, LLC
401 INDUSTRY ROAD
LOUISVILLE, KY 40208
LC CERT# 23339
LC PLAN# 36318C



B Sign Location Plan - Aerial View
Not to Scale

Specifications
Qty = 1
Single Face Internally Illuminated Pylon Sign
Remove & Dispose of Existing Pylon Sign
Setting Points to be set at Grade
2017 NOV 16 P 1:59
CITY CLERKS OFFICE
NEW BEDFORD, MA


Poyant
Building Your Brand
125 Samuel Barnet Boulevard
New Bedford, MA 02745
800.544.0961 | poyantsigns.com

Parallel Products
100 Duchaine Blvd
New Bedford, MA
Project: 13360
Parallel Products
Sales: Stephanie Poyant Moran
Date: 02.23.17
Designer: NLM

Note:
This is an original unpublished drawing created by Poyant Signs, Inc. It is submitted for your personal use in connection with a project being planned for you by Poyant Signs, Inc. It is not to be shown to anyone outside your organization, nor is it to be reproduced, copied or exhibited in any fashion until transferred.

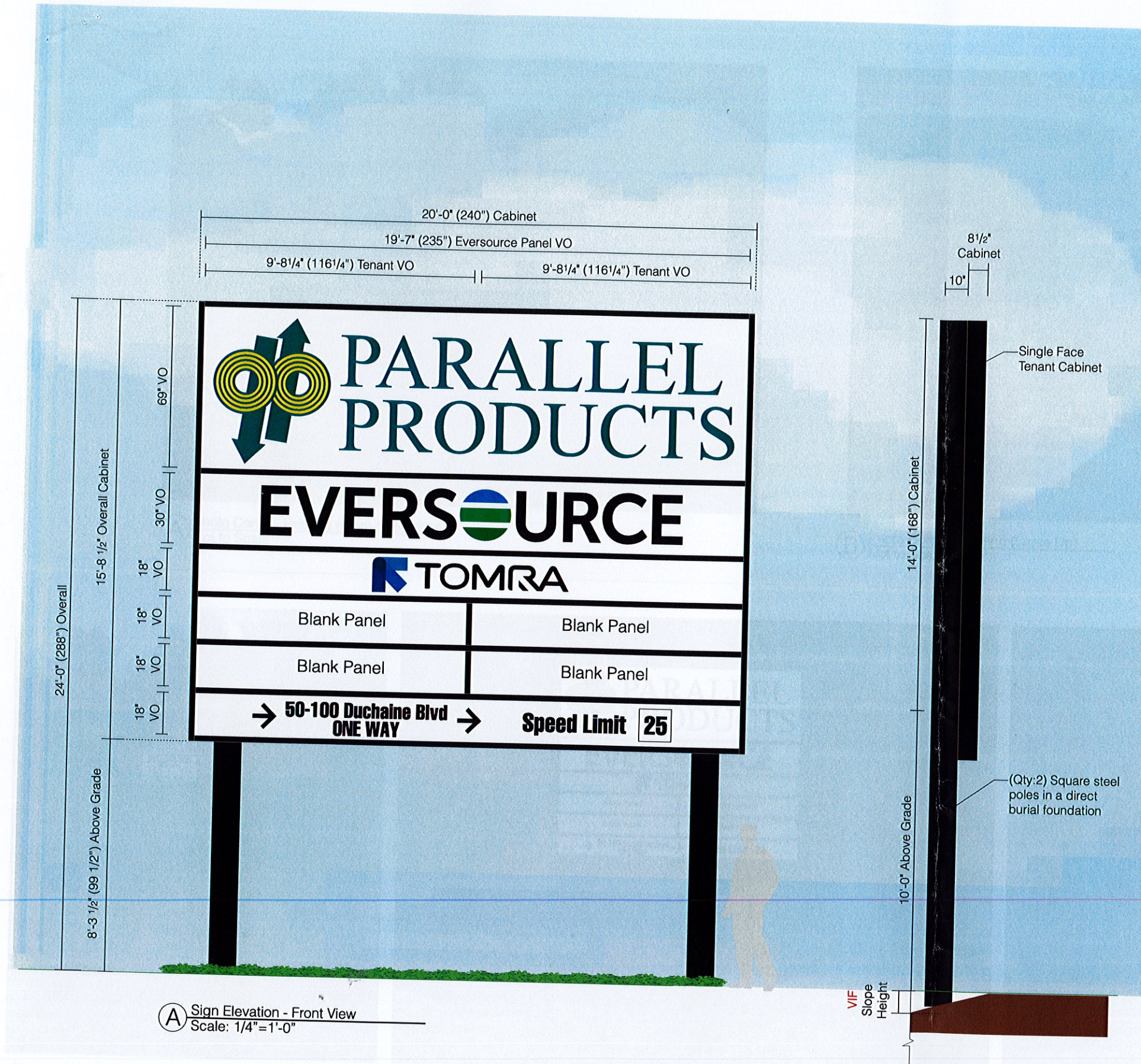
Revisions:

11-15-17 ST Added to Package


This sign is intended to be installed in accordance with the requirements of Article 600 of the National Electrical Code and / or other applicable local codes. This includes proper grounding and bonding of the sign.

Approved By:

Date:



A Sign Elevation - Front View
Scale: 1/4"=1'-0"

B Sign Elevation - Side View
Scale: 1/4"=1'-0"

Specifications

Qty = 1 314.16 Sq Ft

Single Face Internally Illuminated Pylon Sign

- *Remove & Dispose of Existing Pylon Sign
- *Existing Poles to be cut at Grade
- *Foundation to remain as is

- New 8 1/2" deep Small A cabinet with 2 1/2" retainers and 2 1/2" divider bars
- Cabinet returns, retainers and divider bars to be painted black
- 3/16" White lexan faces with full length hanger bars on top and bottom of large faces
- Parallel Products and tomra faces to have digitally printed graphics applied 1st surface
- Eversource face to have translucent vinyl applied 1st surface
- Bottom Tenant Face to have black vinyl applied 1st surface
- All other faces to remain blank
- White LED Illumination
- Cabinet to be flush mounted to the face of 10" x 10" square steel poles in field with hardware as required
- (Qty:2) 12" x 12" x .25" Square steel poles, painted black
- Poles to be in direct burial foundation
- (Qty:2) 4'-0"D x 5'-0"W x 12'-6"WL Direct burial foundation with #4 Rebar @ 12"OC each way top and bottom
- Site to be staked prior to install
- *See page 1B.2 for photo comp and install location

Verify in Field (VIF)

- 120 Volt electrical?
- Existing electrical location
- Height of sloped grade (to determine overall pole height)
- Customer to Provide
 - Parallel Products to approve PMS colors or provide specific PMS's
 - Eversource to approve vinyl colors or provide correct vinyl colors
 - TOMRA to approve or provide artwork & provide color specs (colors can be printed as is if PMS colors are not available)

Colors & Materials

Paint

- Black; Satin Finish

Vinyl

- Black 3M 3630-22

Eversource - Customer to approve colors

- Black 3M 3630-22
- Olympic Blue 3M 3630- 57 (Surplus)
- Brilliant Green 3M 3630-22
- Green 3M 3630-22

Digital Prints

Parallel Products - Customer to approve colors



- (Qty:1) 62 1/2"W x 225 1/4"H Digitally printed translucent 3m control tac vinyl graphic
- Clear over laminate
- Kiss cut around logo and all letters
- Adhesive backer

PMS 7473C PMS 387 C



- (Qty:1) 110"W x 19 1/2"H Digitally printed translucent 3m control tac vinyl graphic
- Clear over laminate
- Kiss cut around logo and all letters
- Adhesive backer



125 Samuel Barnet Boulevard
New Bedford, MA 02745
800.544.0961 | poyant signs.com

Parallel Products

100 Duchaine Blvd
New Bedford, MA

Project: 13360
Parallel Products

Sales: Stephanie Poyant Moran
Date: 02.23.17
Designer: NLM

Note:

This is an original unpublished drawing created by Poyant Signs, Inc. It is submitted for your personal use in connection with a project being planned for you by Poyant Signs, Inc. It is not to be shown to anyone outside your organization, nor is it to be reproduced, copied or exhibited in any fashion until transferred.

Revisions:

- 03.22.17 NLM New Option
- 6-13-17 R2 JST Enlarged Cabinet, added vinyl, foundation, rebar, pole change
- 7-11-17 R3 JST added vector logos, updated digital print
- 10-26-17 R4 JST changed logo, added digital print, updated address
- 11-3-17 R5 JST change to graphics and tenant layout, removed divider bars



This sign is intended to be installed in accordance with the requirements of Article 600 of the National Electrical Code and / or other applicable local codes. This includes proper grounding and bonding of the sign.

Approved By:

Date:

Pylon Sign

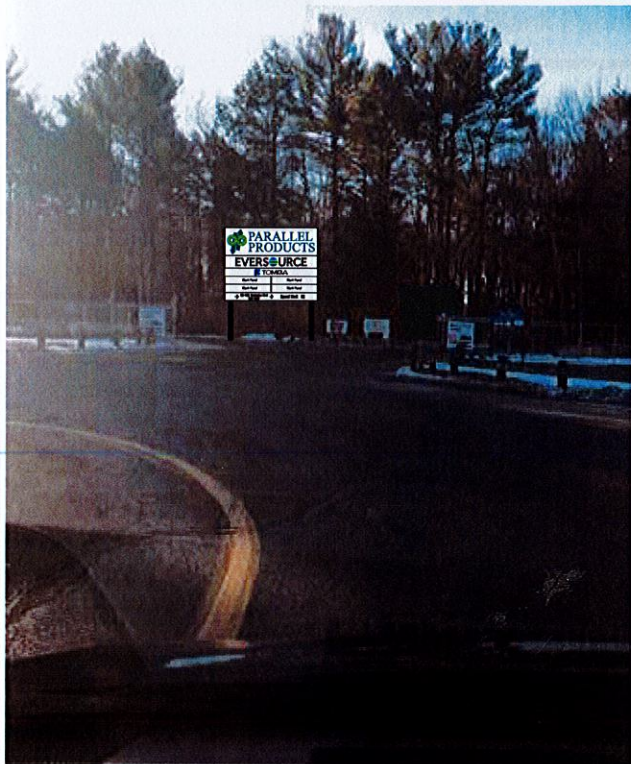
Option B



A Photo Comp - Existing (From a Distance)
Not to Scale



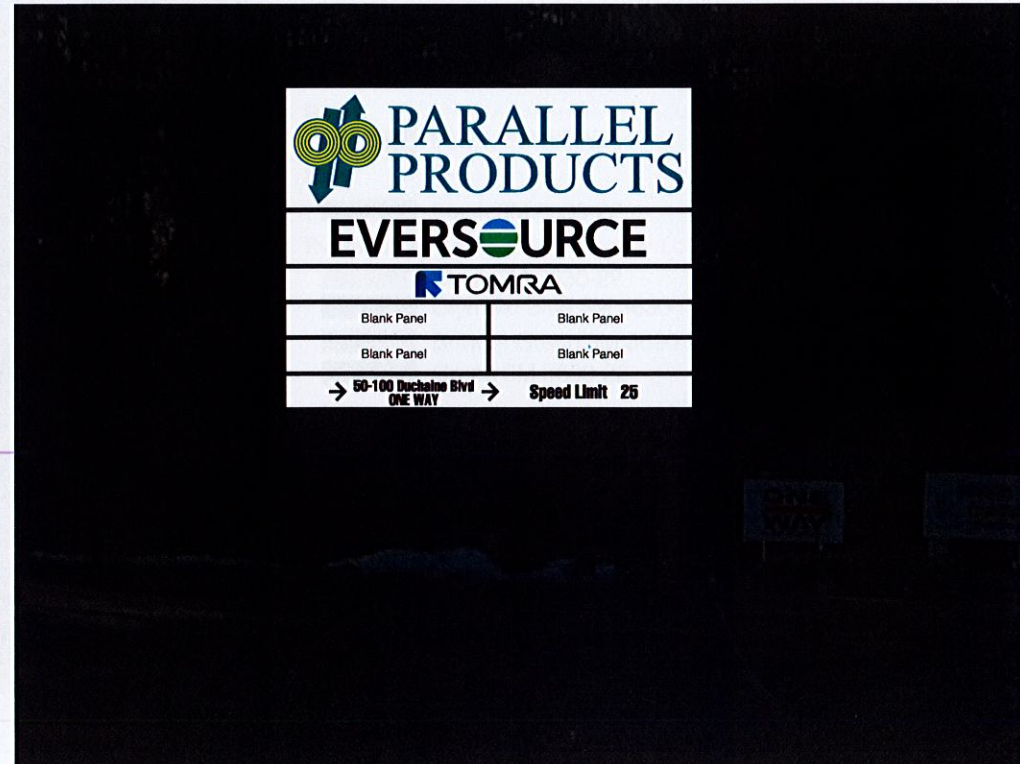
B Photo Comp - Existing (Close Up)
Not to Scale



C Photo Comp - Proposed (From a Distance)
Not to Scale



D Photo Comp - Proposed (Close Up)
Not to Scale



E Photo Comp - Proposed Night (Close Up)
Not to Scale



125 Samuel Barnet Boulevard
New Bedford, MA 02745
800.544.0961 | poyantsigns.com

Parallel Products

100 Duchaine Blvd
New Bedford, MA

Project: 13360
Parallel Products

Sales: Stephanie Poyant Moran
Date: 02.23.17
Designer: NLM

Note:
This is an original unpublished drawing created by Poyant Signs, Inc. It is submitted for your personal use in connection with a project being planned for you by Poyant Signs, Inc. It is not to be shown to anyone outside your organization, nor is it to be reproduced, copied or exhibited in any fashion until transferred.

Revisions:
03.22.17 NLM New Option

7-11-17 R3 JST added vector logos, updated digital print
10-26-17 R4 JST changed logo, added digital print, updated address
11-3-17 R5 JST change to graphics and tenant layout, removed divider bars



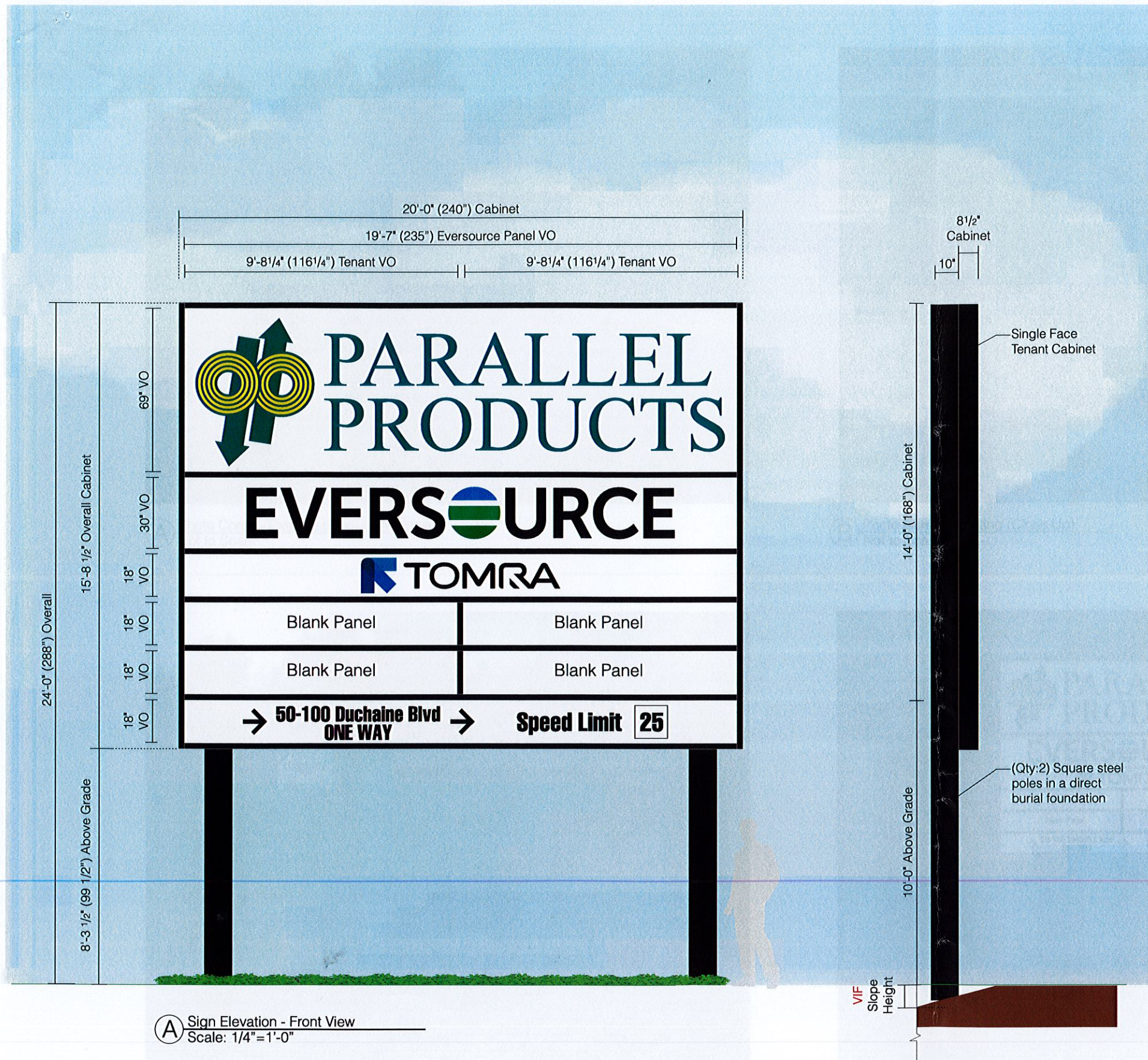
This sign is intended to be installed in accordance with the requirements of Article 600 of the National Electrical Code and / or other applicable local codes. This includes proper grounding and bonding of the sign.

Approved By:

Date:

Pylon Sign

Option B



A Sign Elevation - Front View
Scale: 1/4"=1'-0"

B Sign Elevation - Side View
Scale: 1/4"=1'-0"

Specifications

Qty = 1 314.16 Sq Ft

Single Face Non Illuminated Pylon Sign

- *Remove & Dispose of Existing Pylon Sign
- *Existing Poles to be cut at Grade
- *Foundation to remain as is

- New 8 1/2" deep Small A cabinet with 2 1/2" retainers and 2 1/2" divider bars
- Cabinet returns, retainers and divider bars to be painted black.
- 3/16" White lexan faces with full length hanger bars on top and bottom of large faces
- Parallel Products and tomra faces to have digitally printed graphics applied 1st surface
- Eversource face to have translucent vinyl applied 1st surface
- Bottom Tenant Face to have black vinyl applied 1st surface
- All other faces to remain blank
- Cabinet to be flush mounted to the face of 10" x 10" square steel poles in field with hardware as required
- (Qty:2) 12" x 12" x .25" Square steel poles, painted black
- Poles to be in direct burial foundation
- (Qty:2) 4'-0"D x 5'-0"W x 12'-6"WL Direct burial foundation with #4 Rebar @ 12"OC each way top and bottom
- *Site to be staked prior to install
- *See page 1B.2 for photo comp and install location

Verify in Field (VIF)

- Height of sloped grade (to determine overall pole height)
- Customer to Provide
 - Parallel Products to approve PMS colors or provide specific PMS's
 - Eversource to approve vinyl colors or provide correct vinyl colors
 - TOMRA to approve or provide artwork & provide color specs (colors can be printed as is if PMS colors are not available)

Colors & Materials

Paint

Black; Satin Finish

Vinyl

Black 3M 3630-22

Eversource - Customer to approve colors

- Black 3M 3630-22
- Olympic Blue 3M 3630- 57 (Surplus)
- Brilliant Green 3M 3630-22
- Green 3M 3630-22

Digital Prints

Parallel Products - Customer to approve colors



- (Qty:1) 62 1/2"W x 225 1/4"H Digitally printed translucent 3m control tac vinyl graphic
- Clear over laminate
- Kiss cut around logo and all letters
- Adhesive backer

PMS 7473C PMS 387 C



- (Qty:1) 110"W x 19 1/2"H Digitally printed translucent 3m control tac vinyl graphic
- Clear over laminate
- Kiss cut around logo and all letters
- Adhesive backer



125 Samuel Barnett Boulevard
New Bedford, MA 02745
800.544.0961 | poyantsigns.com

Parallel Products

100 Duchaine Blvd
New Bedford, MA

Project: 13360
Parallel Products

Sales: Stephanie Poyant Moran
Date: 02.23.17
Designer: NLM

Note:
This is an original unpublished drawing created by Poyant Signs, Inc. It is submitted for your personal use in connection with a project being planned for you by Poyant Signs, Inc. It is not to be shown to anyone outside your organization, nor is it to be reproduced, copied or exhibited in any fashion until transferred.

Revisions:
11.06.17 JST New Option
(same no illumination)

This sign is intended to be installed in accordance with the requirements of Article 600 of the National Electrical Code and / or other applicable local codes. This includes proper grounding and bonding of the sign.

Approved By:

Date:

Pylon Sign

Option C



A Photo Comp - Existing (From a Distance)
Not to Scale



B Photo Comp - Existing (Close Up)
Not to Scale



C Photo Comp - Proposed (From a Distance)
Not to Scale



D Photo Comp - Proposed (Close Up)
Not to Scale

CITY CLERKS OFFICE
NEW BEDFORD, MA
2017 NOV 16 P 1:58
CITY CLERK

Poyant
Building Your Brand
125 Samuel Barnett Boulevard
New Bedford, MA 02745
800.544.0961 | poyantsigns.com

Parallel Products


100 Duchaine Blvd
New Bedford, MA

Project: 13360
Parallel Products

Sales: Stephanie Poyant Moran
Date: 02.23.17
Designer: NLM

Note:
This is an original unpublished drawing created by Poyant Signs, Inc. It is submitted for your personal use in connection with a project being planned for you by Poyant Signs, Inc. It is not to be shown to anyone outside your organization, nor is it to be reproduced, copied or exhibited in any fashion until transferred.

Revisions:
11.06.17 JST New Option
(same no illumination)


This sign is intended to be installed in accordance with the requirements of Article 600 of the National Electrical Code and / or other applicable local codes. This includes proper grounding and bonding of the sign.

Approved By:

Date:

Pylon Sign

Option C