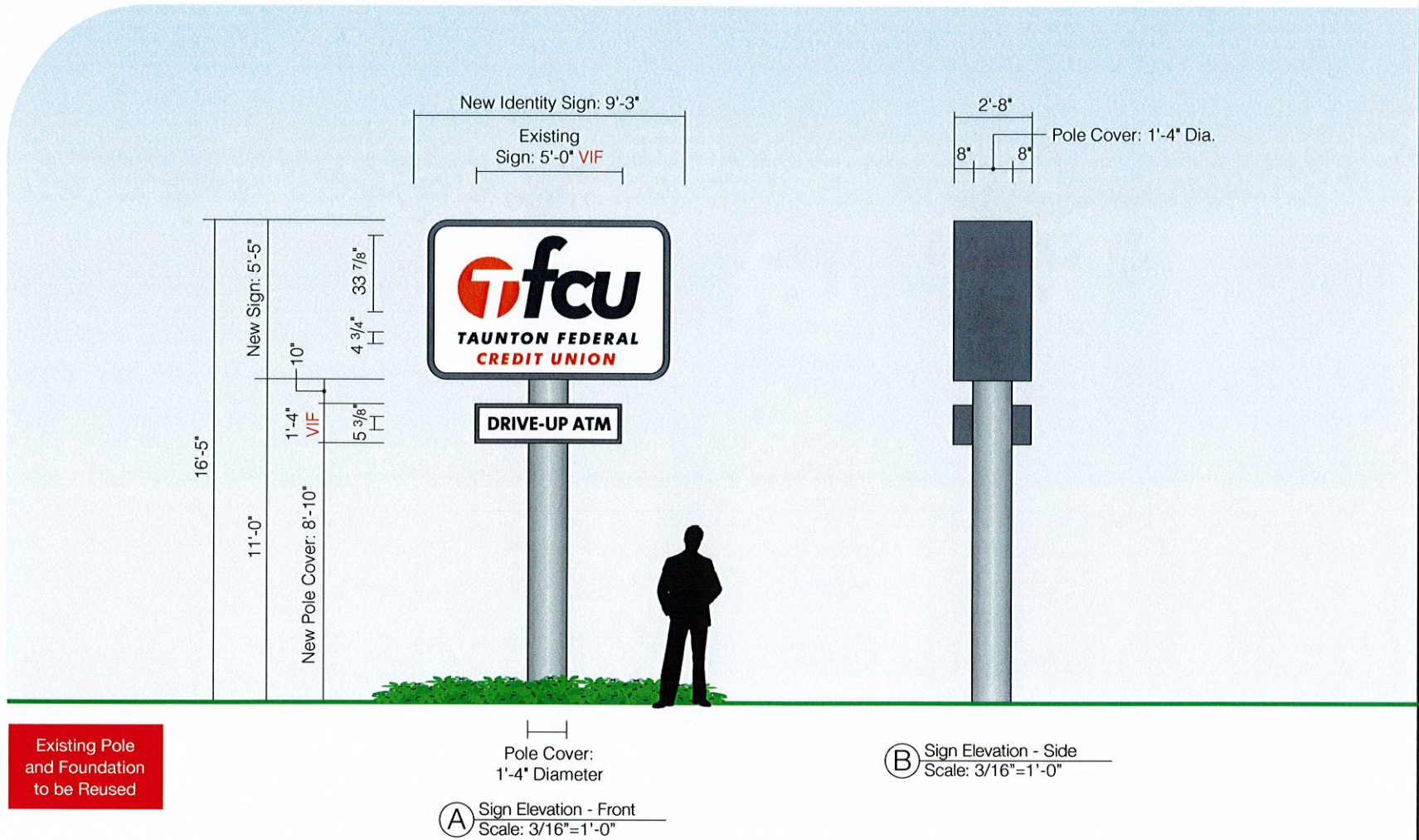


CITY CLERKS OFFICE
NEW BEDFORD, MA
2017 SEP 20 P 1:15
CITY CLERK

Taunton Federal Credit Union | 480 Rockdale Avenue, New Bedford, MA | Design Development | September 19, 2017





Existing Pole
and Foundation
to be Reused

(A) Sign Elevation - Front
Scale: 3/16"=1'-0"

(B) Sign Elevation - Side
Scale: 3/16"=1'-0"

Specifications

Qty = 1

Logo Cabinet: 44.7 Sq Ft
ATM Cabinet: 6.7 Sq Ft
Total: 51.4 Sq Ft

Refurbish Double Face Internally Illuminated Pylon Sign

**Remove and dispose of top sign, middle sign and pole cover;
lower sign will be refurbished. Cut back existing pole to 16'-11" above grade.

New Identity Sign

- 32" Deep heavy duty extruded alum. Wide Fab frame with 8" radius corners.
- 2 1/2" Flat retainers and sides of cabinet painted P1.
- 3/16" Thick white Lexan faces with translucent digital prints.
- Illuminated with white LEDs.

Existing Lower Sign

- Sand, prime and paint retainers and sides of cabinet P1.
- (2) New 3/16" White Lexan faces with (2) full surface translucent digital prints.
- Illuminated with white LEDs.

New Pole Cover

- 18" Diameter PVC painted P2.

VIF

Lower Sign Sign

- Verify size of sign, depth of sign and size of retainers.

Pole

- Verify height and size.

Electrical: 120V VIF

Colors and Materials

Paint

P1 Akzo Nobel to Match PMS Cool Gray 9 C; Satin Finish

P2 Akzo Nobel to Match PMS Cool Gray 6 C; Satin Finish

Digital Prints (Prints will be back-lit)



DRIVE-UP ATM

- Qty: 2
- Image Size: 75 3/8" Wide x 53" High
- 3M White Translucent with Adhesive Back
- Kiss-Cut, No Weeding, No Masking
- Clear UV Laminate 3M 8519

- Qty: 2
- Size: 50.234" Wide x 5.497" High TBD
- 3M White Translucent with Adhesive Back
- Kiss-Cut, No Weeding, No Masking
- Clear UV Laminate 3M 8519



(C) Photo - Existing
Not to Scale



(D) Photocomp - Proposed
Not to Scale

Poyant
Building Your Brand

125 Samuel Barnett Boulevard
New Bedford, MA 02745
800.544.0961 | poyantsigns.com

Taunton Federal
Credit Union

480 Rockdale Avenue
New Bedford, MA

Project: 14019

Sales: Stephanie Poyant Moran
Date: 08-23-2017
Designer: PJM

Note:
This is an original unpublished
drawing created by Poyant Signs,
Inc. It is submitted for your
personal use in connection with
a project being planned for you
by Poyant Signs, Inc. It is not to
be shown to anyone outside your
organization, nor is it to be
reproduced, copied or exhibited
in any fashion until transferred.

Revisions:

9-19-17 ST (New option added to package)



This sign is intended to be installed in accordance
with the requirements of Article 600 of the National
Electrical Code and / or other applicable local codes.
This includes proper grounding and bonding of the sign.

Approved By:

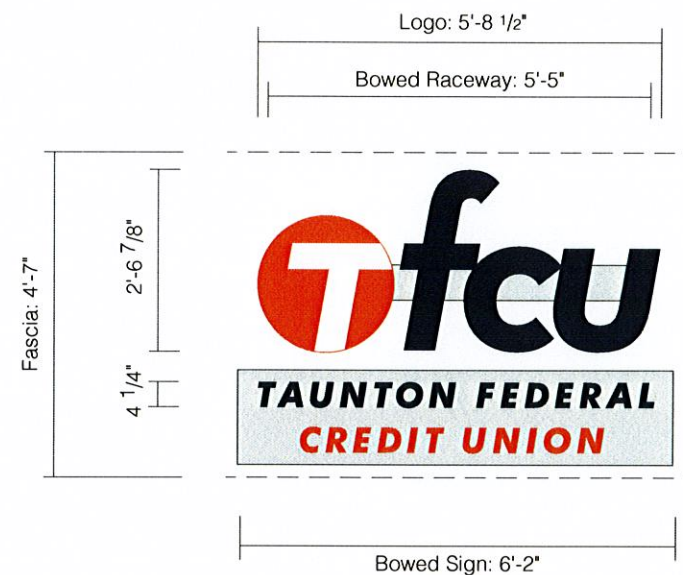
Date:

Refurbish Pylon Sign

Case 36-17
09/20/2017

Sign Type 14019.1C-R4

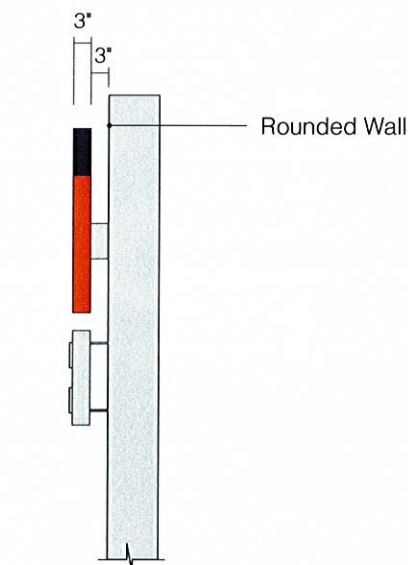
1C.1



fcu — Smallest Stroke: 1 1/2"

R — Smallest Stroke: 3/4"

(A) Sign Elevation - Front
Scale: 3/8"=1'-0"



(B) Sign Elevation - Side
Scale: 3/8"=1'-0"

Specifications

Qty = 1

22.96 Sq Ft

Single Face Internally Illuminated Building Sign

**Remove and dispose of banner.

Logo on a Bowed Raceway

- 3" Deep face-lit channel letters, returns and trim cap painted P3 and P4.
- 3/16" White acrylic faces with digitally printed V1 and V2 vinyl applied to faces.
- "T" in circle will appear orange and white during the day and illuminate as orange and white at night.
- "fcu" will appear dark gray during the day and illuminate as white at night.
- Illuminated with white LEDs
- Bowed Raceway to Fit Bow on Building: 6" High x 3" deep fabricated .090 alum. top and bottom w/ fabricated .063 alum. face, back and ends painted P5.

Bowed Sign

- 1'-4" High x 3" deep fabricated .090 alum. top and bottom w/ fabricated .063 alum. face, back and ends painted P5.
- 3/4" Thick clear acrylic push-thru graphics with V1 and V2 applied to faces and V3 on second surface.
- Illuminated with white LEDs.
- 3" Long spacers.

VIF

- Electrical 120V
- Color of building
- Provide template of bowed wall, see Detail C

Paint

P3 Akzo Nobel to Match PMS Orange 021 C; Satin Finish

P4 Akzo Nobel to Match Dark Gray 432 C; Satin Finish

P5 Akzo Nobel to Match Building Color; Satin Finish VIF

Digitally Printed Translucent Film (Print will be back-lit)

V1 (1) 33" x 30" Sheet, Adhesive Back, UV Inks, PMS Orange 021 C

Digitally Printed Day/Night Dual Color Film

V2 (1) 46" x 38" Sheet 3M 3635-210, Adhesive Back, UV Laminate, Dark Gray PMS 432 C

Vinyl

V3 White, 3M 3630-20

Poyant
Building Your Brand

125 Samuel Barnet Boulevard
New Bedford, MA 02745
800.544.0961 | poyantsigns.com

Taunton Federal
Credit Union

480 Rockdale Avenue
New Bedford, MA

Project: 14019

Sales: Stephanie Poyant Moran
Date: 08-23-2017
Designer: PJM

Note:

This is an original unpublished drawing created by Poyant Signs, Inc. It is submitted for your personal use in connection with a project being planned for you by Poyant Signs, Inc. It is not to be shown to anyone outside your organization, nor is it to be reproduced, copied or exhibited in any fashion until transferred.

Revisions:

8-28-17 PJM



This sign is intended to be installed in accordance with the requirements of Article 600 of the National Electrical Code and / or other applicable local codes. This includes proper grounding and bonding of the sign.

Approved By:

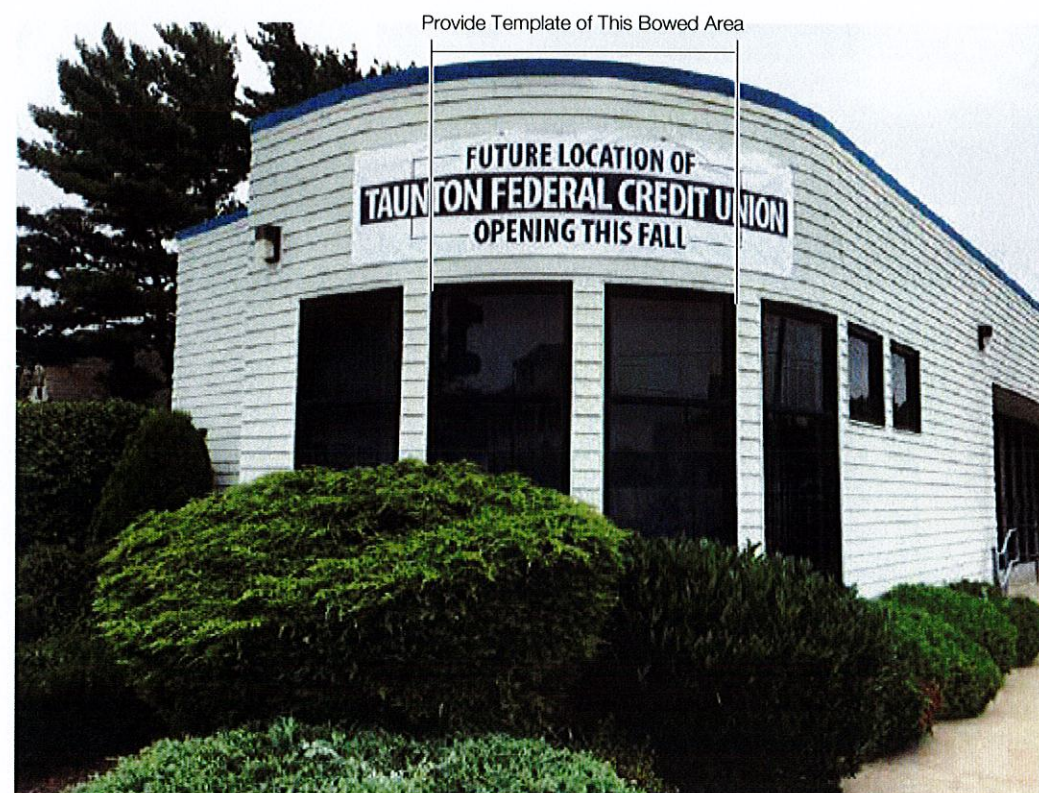
Date:

Internally Illuminated
Building Sign

North West Elevation

Sign Type 14019.2A

2A.1



(D) Photocopy - Proposed
Not to Scale

Case 36-1/
09/20/2017

Note:
This is an original unpublished
drawing created by Poyant Signs,
Inc. It is submitted for your
personal use in connection with
a project being planned for you
by Poyant Signs, Inc. It is not to
be shown to anyone outside your
organization, nor is it to be
reproduced, copied or exhibited
in any fashion until transferred.

Revisions:

9-11-17 PJM (Tfcu only)



This sign is intended to be installed in accordance
with the requirements of Article 600 of the National
Electrical Code and / or other applicable local codes.
This includes proper grounding and bonding of the sign.

Approved By:

Date:

Non Illuminated
Building Sign
South Elevation
Option A

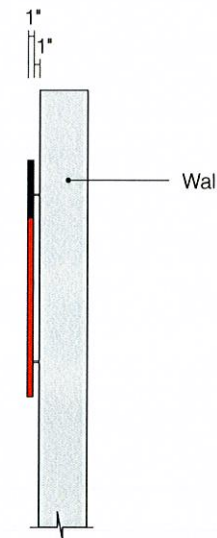
Sign Type 14019.3A-R2

3A.1



Smallest Stroke: 1 7/8"

(A) Sign Elevation - Front
Scale: 3/8"=1'-0"



(B) Sign Elevation - Side
Scale: 3/8"=1'-0"

Specifications

Qty = 1

37.20 Sq Ft

Single Face Non Illuminated Building Sign

**Remove and dispose of banner.

- 1" Thick routed acrylic, faces and returns painted P3 and P4.
- Blind stud mounted to building, 1" long spacers.

VIF

- Color of building

Paint

P3  Akzo Nobel to Match PMS Orange 021 C; Satin Finish

P4  Akzo Nobel to Match Dark Gray 432 C; Satin Finish



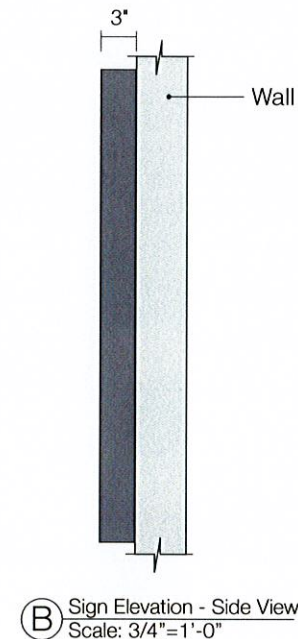
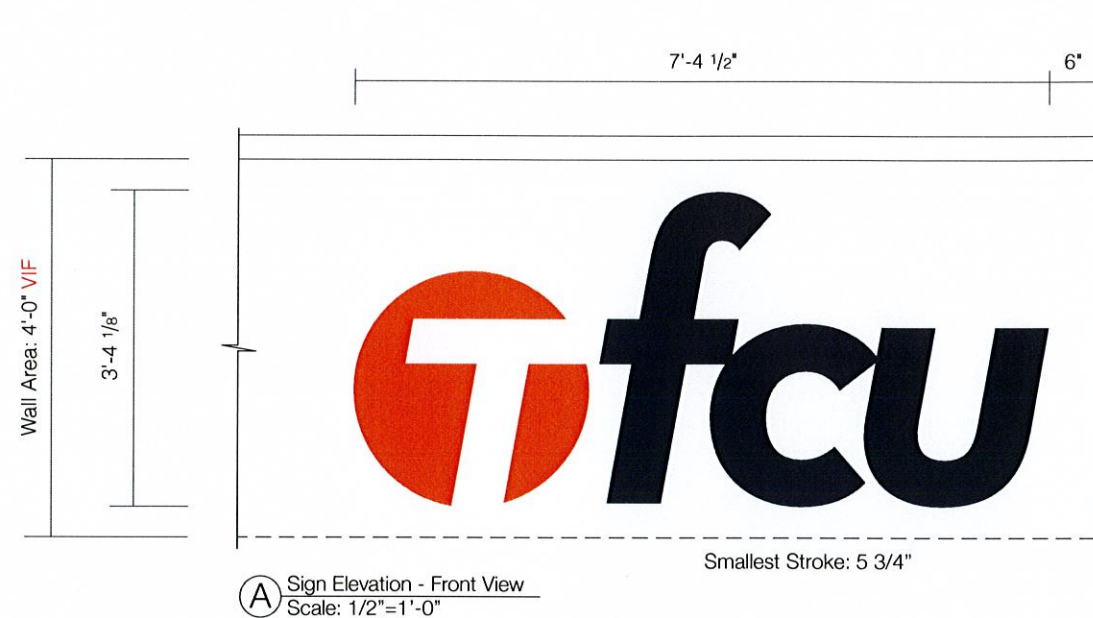
(C) Photo - Existing
Not to Scale

Re-located by Others



(D) Photocomp - Proposed
Not to Scale

Case 36-17
09/20/2017



Specifications

Qty = 1

24.58 Sq Ft

Face-Lit Channel Letterset

**Remove and dispose of box sign.

- 3" Deep face-lit channel letters, returns and trim cap painted P3 or P4.
- 3/16" White acrylic faces with digitally printed V1 and V2 vinyl applied to faces.
- "T" in circle will appear orange and white during the day and illuminate as orange and white at night. "fcu" will appear dark gray during the day and illuminate as white at night.
- Illuminated with white LEDs
- Remotely wired VIF.
- Electrical: 120V VIF.

Colors and Materials

Paint

P3  Akzo Nobel to Match PMS Orange 021 C; Satin Finish

P4  Akzo Nobel to Match Dark Gray 432 C; Satin Finish

Digitally Printed Translucent Film

V1  (1) 33" x 30" Sheet, Adhesive Back, UV Inks, PMS Orange 021 C **(Print will be back-lit)**

Digitally Printed Day/Night Dual Color Film

V2  (1) 62" x 44" Sheet 3M 3635-210, Adhesive Back, UV Laminate, Dark Gray PMS 432 C

Poyant
Building Your Brand

125 Samuel Barnet Boulevard
New Bedford, MA 02745
800.544.0961 | poyantsigns.com

Taunton Federal
Credit Union

480 Rockdale Avenue
New Bedford, MA

Project: 14019

Sales: Stephanie Poyant Moran
Date: 08-23-2017
Designer: PJM

Note:

This is an original unpublished drawing created by Poyant Signs, Inc. It is submitted for your personal use in connection with a project being planned for you by Poyant Signs, Inc. It is not to be shown to anyone outside your organization, nor is it to be reproduced, copied or exhibited in any fashion until transferred.

Revisions:

9-8-17 PJM (new option)
9-11-17 PJM (Tfcu only)



This sign is intended to be installed in accordance with the requirements of Article 600 of the National Electrical Code and / or other applicable local codes. This includes proper grounding and bonding of the sign.

Approved By:

Date:

New Face-Lit Channel Letterset
for East Elevation

Option A



C Photo - Existing
Not to Scale



D Photocomp - Proposed
Not to Scale

Case 36-17
09/20/2017

Sign Type 14019.4A-R2

4A.1



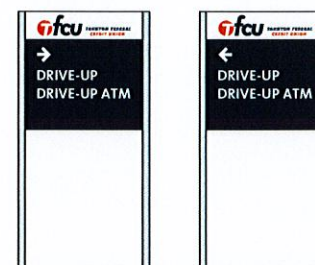
Pylon Sign

Sign 1B - Option B



Directional Signs

Sign 5A.1



Side A

Side B

Sign 5A.2

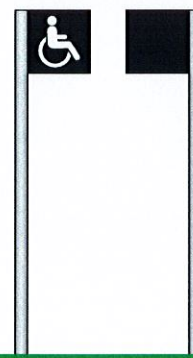


Side A

Side B

Regulatory Signs

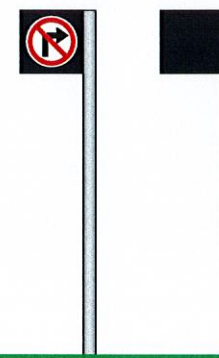
Sign 6A.1



Side A

Side B

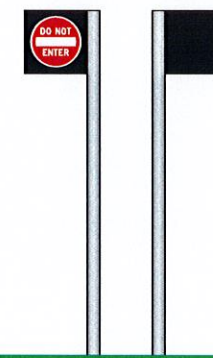
Sign 6A.2



Side A

Side B

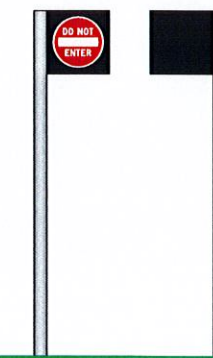
Sign 6A.3



Side A

Side B

Sign 6A.4



Side A

Side B

Note:
This is an original unpublished drawing created by Poyant Signs, Inc. It is submitted for your personal use in connection with a project being planned for you by Poyant Signs, Inc. It is not to be shown to anyone outside your organization, nor is it to be reproduced, copied or exhibited in any fashion until transferred.

Revisions:

9-11-17 PJM (removed 1A)
9-19-17 ST (moved 6A.2)



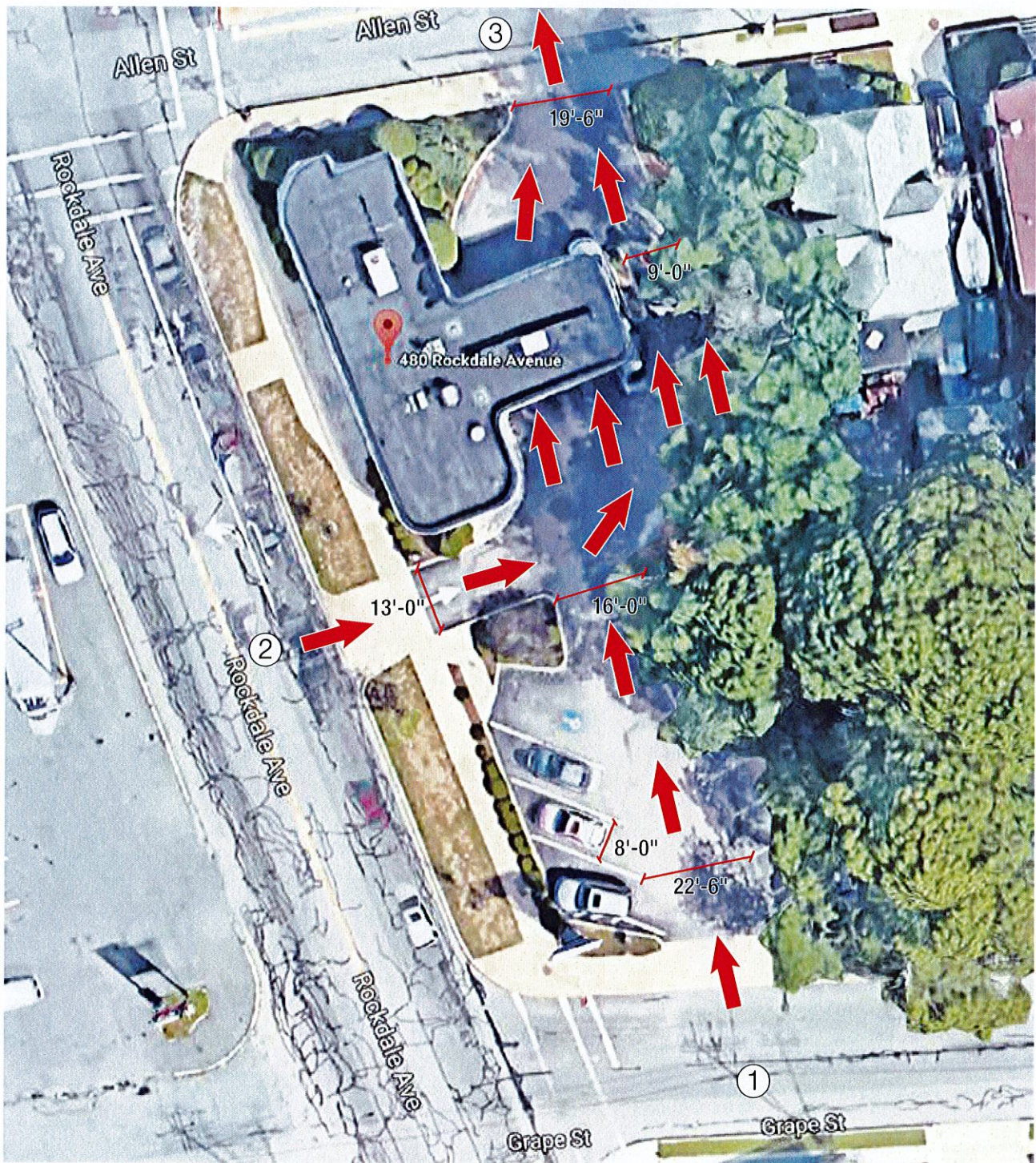
This sign is intended to be installed in accordance with the requirements of Article 600 of the National Electrical Code and / or other applicable local codes. This includes proper grounding and bonding of the sign.

Approved By:

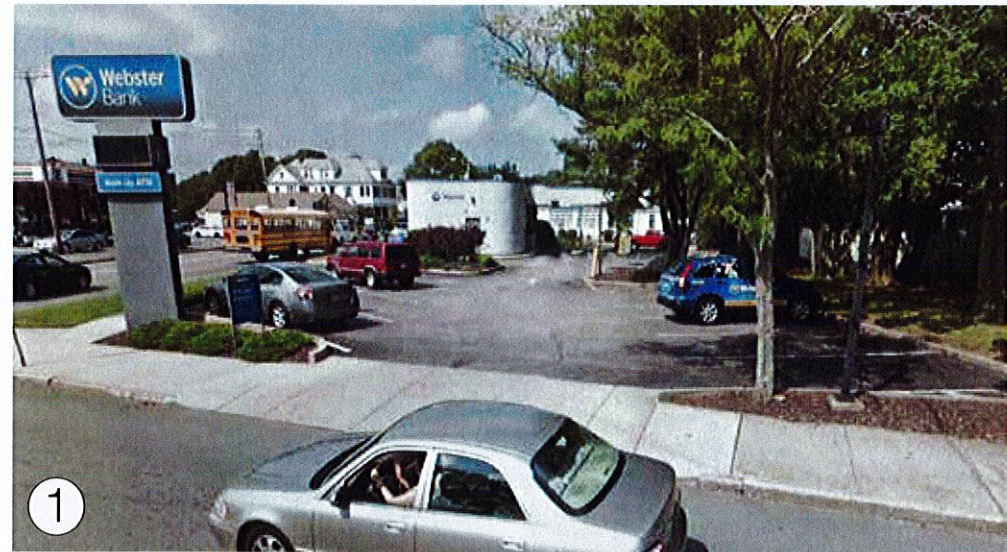
Date:

Site Plan
with Proposed
Freestanding Signs

Case 36-17
09/20/2017



(B) Site Plan with Dimensions & Traffic Flow
Not to Scale



Note:
This is an original unpublished drawing created by Poyant Signs, Inc. It is submitted for your personal use in connection with a project being planned for you by Poyant Signs, Inc. It is not to be shown to anyone outside your organization, nor is it to be reproduced, copied or exhibited in any fashion until transferred.

Revisions:

9-11-17 PJM (removed 1A)
9-18-17 ST (added dimensions and photos)



This sign is intended to be installed in accordance with the requirements of Article 600 of the National Electrical Code and / or other applicable local codes. This includes proper grounding and bonding of the sign.

Approved By:

Date:

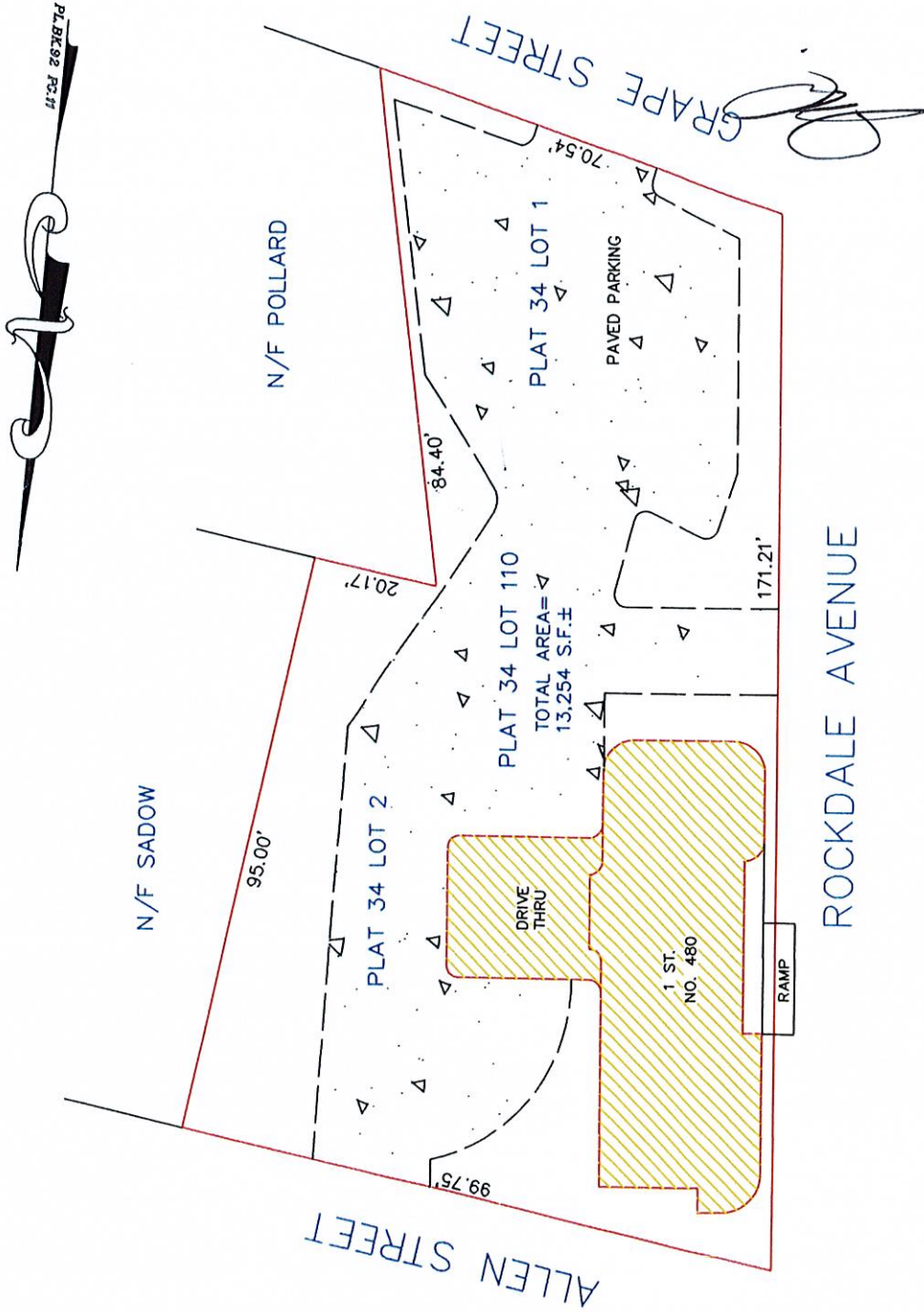
Site Plan
with Proposed
Freestanding Signs

Case 36-17
09/20/2017

File number:	170602-14	UNREGISTERED LAND	
Attorney:	PERCY LAW GROUP	Deed Book	3985 Page 270
Lender:		Plan Book	92 Page 11 Lot(s)
Owner:	ROCKDALE REALTY TRUST	REGISTERED LAND	
		Reg. Book	Sheet Lot(s):
Date:	6/7/2017	Certificate of Title	
Assessor's Map	34 Blk:	Lot	1,2,110 Census Tract

MORTGAGE INSPECTION PLAN
480 ROCKDALE AVENUE, NEW BEDFORD, MA

Scale: 1" = 30'



CERTIFICATION

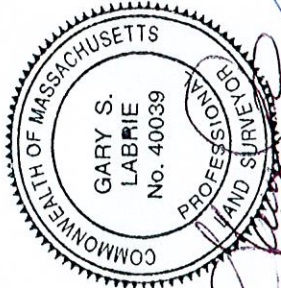
I CERTIFY TO THE ABOVE ATTORNEY, BANK, AND THEIR TITLE INSURANCE COMPANY THAT THE MAIN BUILDING, FOUNDATION OR DWELLING WAS IN COMPLIANCE WITH THE LOCAL ZONING BYLAWS IN EFFECT WHEN CONSTRUCTED (WITH RESPECT TO STRUCTURAL SETBACK REQUIREMENTS ONLY) OR IS EXEMPT FROM VIOLATION ENFORCEMENT ACTION UNDER MASS. GENERAL LAW TITLE VII, CHAPTER 40A, SECTION 7.

FLOOD DETERMINATION

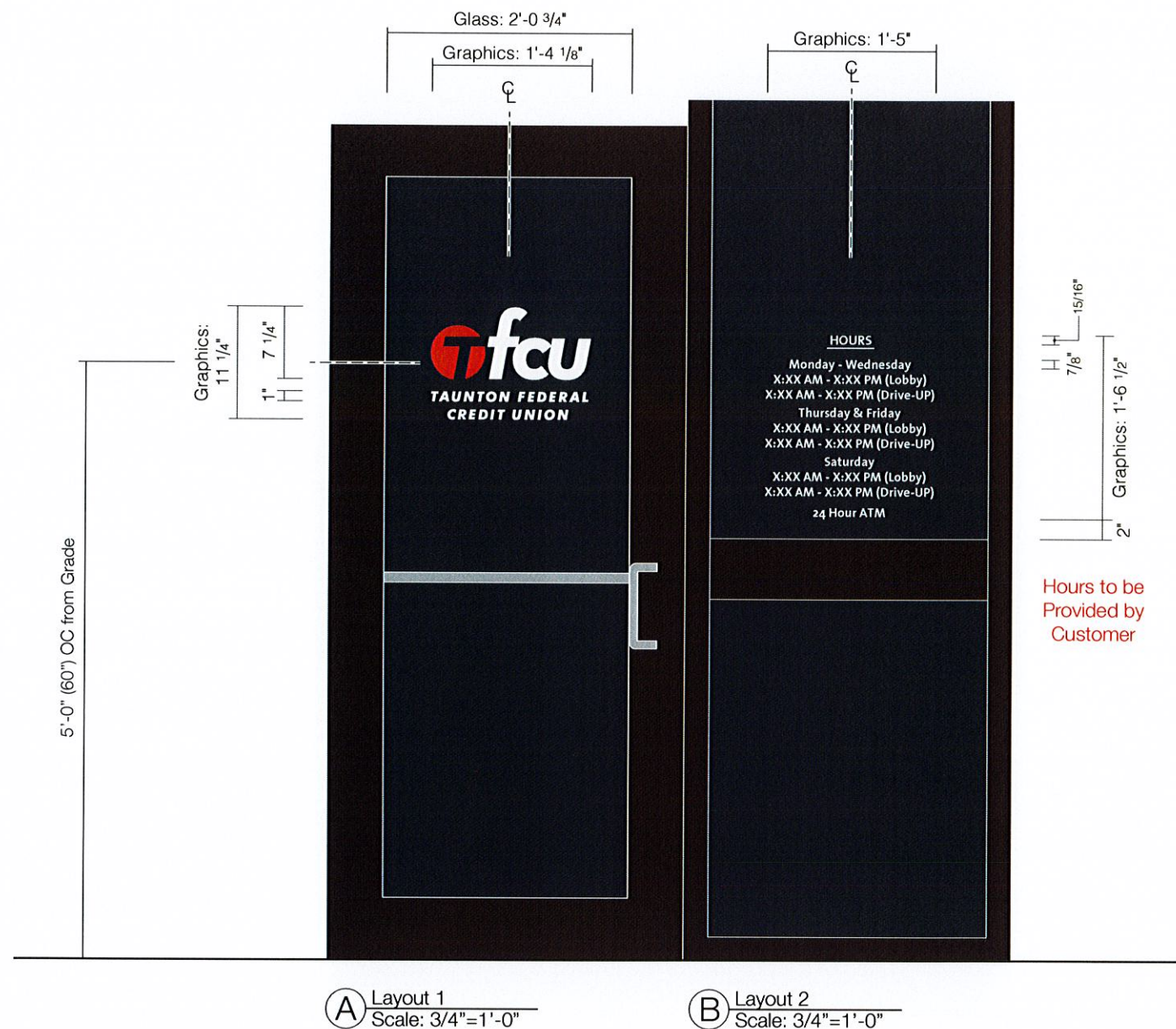
BY SCALE, THE DWELLING SHOWN HERE DOES NOT FALL WITHIN A SPECIAL FLOOD HAZARD ZONE AS DELINEATED ON A MAP OF COMMUNITY # 25005C0477F AS ZONE X DATED 7/7/2009 BY THE NATIONAL FLOOD INSURANCE PROGRAM.



Olde Stone Plot Plan Service, LLC
P.O. Box 1166
Lakeville, MA 02347-
Tel: (800) 993-3302
Fax: (800) 993-3304



PLEASE NOTE: This inspection is not the result of an instrument survey. The structures as shown are approximate only. An instrument survey would be required for an accurate determination of building locations, encroachments, property line dimensions, fences and lot configuration and may reflect different information than shown here. The land as shown is based on client furnished information only or assessor's map & occupation and may be subject to further out-sales, takings, easements and rights of way. No responsibility is extended to the landowner or surveyor, or occupant. This is merely a mortgage inspection and is not to be recorded.



Specifications

Qty = 1 of Each Layout 1.25 Sq Ft

Vinyl Graphics for Main Entrance Door and Window

**Remove and dispose item shown in Detail C.

- Prep and clean glass.
- Digital print and V7 vinyl applied to first surface of glass.

Colors and Materials

Vinyl
V7 White, Arlon 02

Digital Print



- Qty: (1) 16.117 H x 11.3" W
- White Opaque
- Adhesive Back
- UV Overlam
- Kiss-Cut
- Backer to Remain; No Weeding

- White (no black outline)
- PMS Orange 021 C



© Photo - Existing
Not to Scale

Remove and Dispose



© Photocomp - Proposed
Not to Scale

Poyant
Building Your Brand

125 Samuel Barnett Boulevard
New Bedford, MA 02745
800.544.0961 | poyantdesign.com

**Taunton Federal
Credit Union**

480 Rockdale Avenue
New Bedford, MA

Project: 14019

Sales: Stephanie Poyant Moran
Date: 08-23-2017
Designer: PJM

Note:
This is an original unpublished drawing created by Poyant Signs, Inc. It is submitted for your personal use in connection with a project being planned for you by Poyant Signs, Inc. It is not to be shown to anyone outside your organization, nor is it to be reproduced, copied or exhibited in any fashion until transferred.

Revisions:

9-8-17 PJM (orange & white)



This sign is intended to be installed in accordance with the requirements of Article 600 of the National Electrical Code and / or other applicable local codes. This includes proper grounding and bonding of the sign.

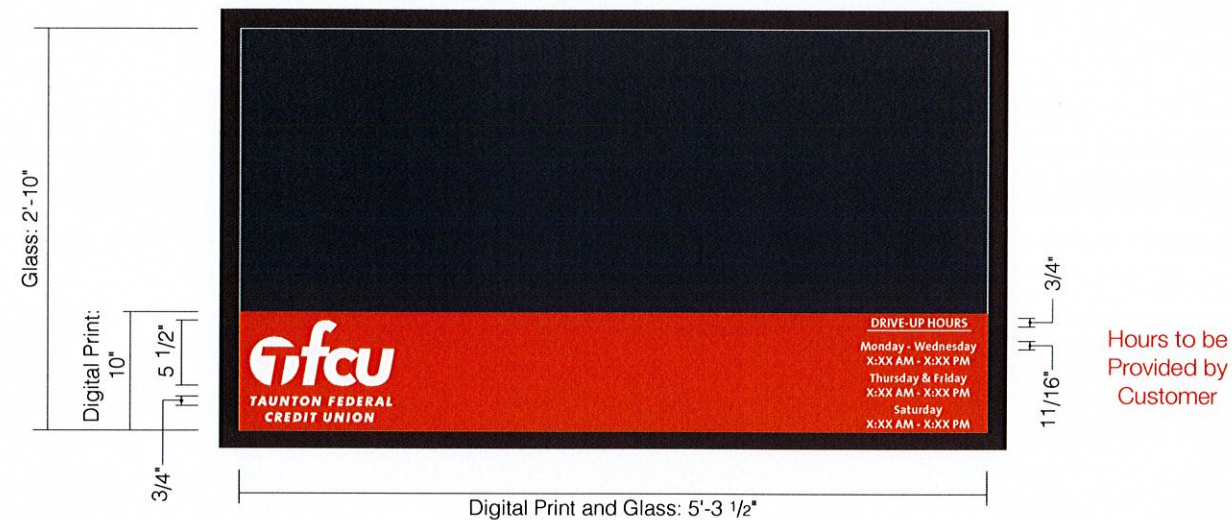
Approved By:

Date:

Vinyl Graphics
for Main Entrance Door
and Window

Case 36-17
09/20/2017

Sign Type 14019.7A-R1 7A.1



A Layout 1
Scale: 3/4"=1'-0"

Specifications

Qty = 1 of Each Layout 4.40 Sq Ft

Digitally Printed Graphics for Drive-Up Window

- Prep and clean glass.
- Digital print applied to first surface of glass.

Colors and Materials

Digital Print



- Qty: (1) 10" H x 63 1/2" W
- White Opaque
- Adhesive Back
- UV Overlam

- White
- PMS Orange 021 C



B Photo - Existing
Not to Scale



C Photocomp - Proposed
Not to Scale

Taunton Federal Credit Union

480 Rockdale Avenue
New Bedford, MA

Project: 14019

Sales: Stephanie Poyant Moran
Date: 08-23-2017
Designer: PJM

Note:
This is an original unpublished drawing created by Poyant Signs, Inc. It is submitted for your personal use in connection with a project being planned for you by Poyant Signs, Inc. It is not to be shown to anyone outside your organization, nor is it to be reproduced, copied or exhibited in any fashion until transferred.

Revisions:

9-8-17 PJM (digital print)



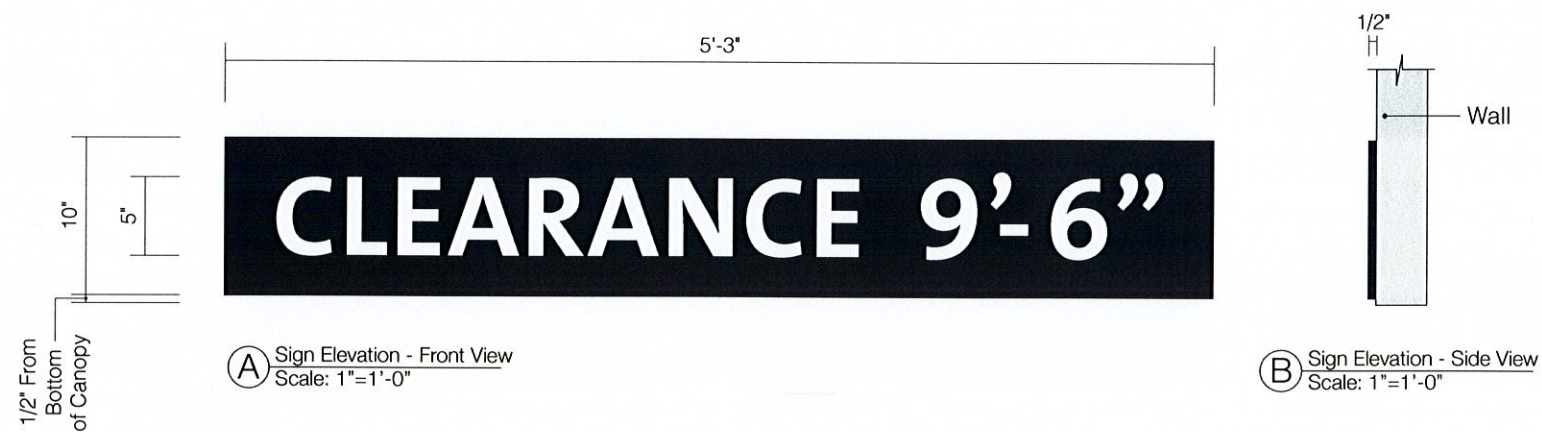
This sign is intended to be installed in accordance with the requirements of Article 600 of the National Electrical Code and / or other applicable local codes. This includes proper grounding and bonding of the sign.

Approved By:

Date:

Digitally Printed Graphics
for Drive-Up Window

Case 36-17
09/20/2017



Specifications

Qty = 1

4.16 Sq Ft Each

Single Face Non Illuminated Drive-Up Canopy Clearance Sign

**Remove and dispose of existing clearance sign

- 1/2" Thick Sintra, face and returns painted P4.
- Applied white reflective V4 graphics.
- Blind suid mounted flush to building.

Colors and Materials

Paint

P4 XXXXXXXXXX Akzo Nobel to Match Dark Gray 432 C; Satin Finish

Vinyl

V4 White Reflective, 3M 680-10



© Photo - Existing
Not to Scale



(D) Photocomp - Proposed
Not to Scale



125 Samuel Barnet Boulevard
New Bedford, MA 02745
800.544.0961 | poyantsigns.com

Taunton Federal
Credit Union

480 Rockdale Avenue
New Bedford, MA

Project: 14019

Sales: Stephanie Poyant Moran
Date: 08-23-2017
Designer: PJM

Note:
This is an original unpublished drawing created by Poyant Signs, Inc. It is submitted for your personal use in connection with a project being planned for you by Poyant Signs, Inc. It is not to be shown to anyone outside your organization, nor is it to be reproduced, copied or exhibited in any fashion until transferred.

Revisions:

[illegible]

This sign is intended to be installed in accordance with the requirements of Article 600 of the National Electrical Code and / or other applicable local codes. This includes proper grounding and bonding of the sign.

Approved By:

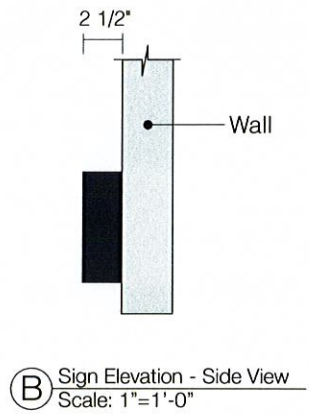
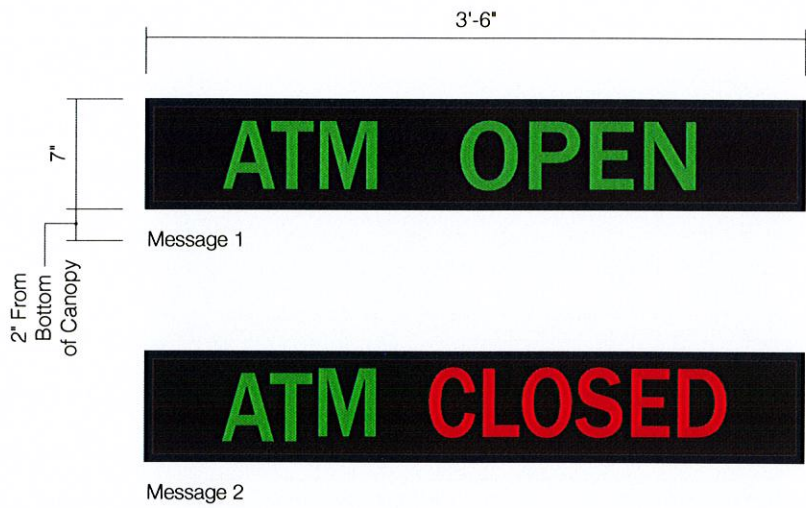
Date:

Drive-Up Canopy Clearance Sign

Case 36-17
09/20/2017

Sign Type 14019.9A

9A.1



Specifications

Qty = (1) 2.02 Sq Ft

Single Face Internally Illuminated ATM Open/Closed Sign for Drive-Up Canopy

- **Remove and dispose of (1) Open/Closed sign.
- 2 1/2" Deep extruded aluminum TCL742GGR-110. cabinet painted P4.
 - Smoked polycarbonate face.
 - Illuminated with red and green LEDs.
 - Mounted flush to wall through back panel. Cabinet pivots open on top.
 - **Electrical 120V VIF.**

Colors and Materials

Paint

P4 Akzo Nobel to Match Dark Gray 432 C; Satin Finish



125 Samuel Barnett Boulevard
New Bedford, MA 02745
800.544.0961 | poyant signs.com

Taunton Federal
Credit Union

480 Rockdale Avenue
New Bedford, MA

Project: 14019

Sales: Stephanie Poyant Moran
Date: 08-23-2017
Designer: PJM

Note:
This is an original unpublished drawing created by Poyant Signs, Inc. It is submitted for your personal use in connection with a project being planned for you by Poyant Signs, Inc. It is not to be shown to anyone outside your organization, nor is it to be reproduced, copied or exhibited in any fashion until transferred.

Revisions:

9-11-17 PJM (new sign)



This sign is intended to be installed in accordance with the requirements of Article 600 of the National Electrical Code and / or other applicable local codes. This includes proper grounding and bonding of the sign.

Approved By:

Date:

Drive-Up Canopy
Drive-Up ATM Sign

Case 36-17
09/20/2017

Sign Type 14019.10A-R2 10A.1



Remove and Dispose

(C) Photo - Existing
Not to Scale



(D) Photocomp - Proposed
Not to Scale