

# PROPOSED SITE DEVELOPMENT FIRST HIGHLAND MANAGEMENT & DEVELOPMENT CORPORATION

# SITE DRAWINGS

ISSUED FOR: SITE PLAN MODIFICATION

DATE ISSUED: OCTOBER 19, 2016

LATEST ISSUE: MAY 22, 2017

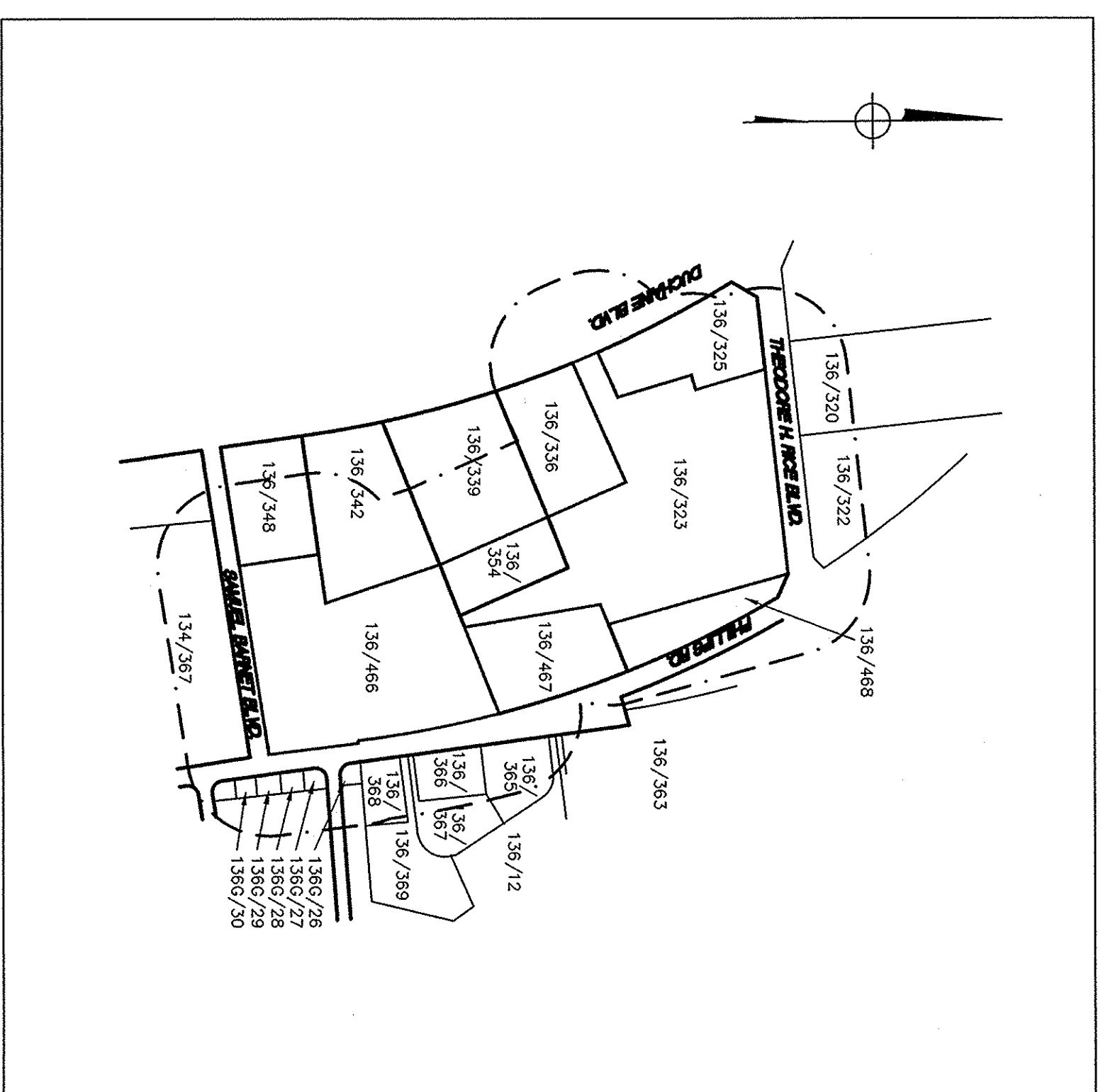
200 THEODORE H. RICE BOULEVARD  
NEW BEDFORD, MASSACHUSETTS

## INDEX TO DRAWINGS

<u>SHEET NO.</u>	<u>DRAWING TITLE</u>
N-1	TITLE SHEET
SL-1	NOTES & LEGEND
SG-1	SITE LAYOUT
LAND-1	SITE GRADING & DRAINAGE
	LANDSCAPING PLAN
D-1	SITE DETAILS



SCALE: 1"=300'



SCALE: 1"=500

300 NOTIFICATION LINE	
PROJECT SITE	
MA-104-L07	OWNER OF RECORD
134-497	NE PLAINS COOP.
134-498	WILLIAMSON, JAMES
134-501-27	VANDERBILT, M. ANGEL & EVAN J. MOREL
134-502	RAMON NORRIGA & DOMINGOS A. NORRIGA
134-503	JOAO SAMPAIO & MARIA SAMPAIO
134-509	FRANCES L. HEGGER & ROBERT F. ROBINSON
134-512	CANTERBURY HOUSE (REFER TO ADJUTEN'S LIST)
134-520	DONALD F. RUDNICK, JR. & SUSAN R. RUDNICK, JR
134-522	CONQUEST PARTNERS LLC
134-525	INDUSTRIAL REC. BUILDING LLC
134-539	EPIC BLDG. LLC
134-542	159 DUCHANE BLVD. LLC
134-549	KENNE REALTY HOLDINGS LLC
134-566	GLOUCESTER HOUSE (REFER TO ADJUTEN'S LIST)
134-567	EXETER HOUSE (REFER TO ADJUTEN'S LIST)
134-568	WEST HILL ASSOCIATES INC.
134-569	EVA MATSUOKO
134-667	PHILIPS POOL SCEN LLC
134-672	PHILIPS POOL NORTH LLC
134-686	

--- · --- · ---  
300' NOTIFICATION LINE  
-----  
PROJECT SITE

PROJECT SITE

## PROPOSED SITE DEVELOPMENT

MAP 136,  
LOTS 323, 354 & 466  
200 THEODORE H. RICE  
BOULEVARD  
NEW BEDFORD, MA



5/3/17

**FIELD  
ENGINEERING  
CO., INC.**

**CONSULTING ENGINEERS**

11D INDUSTRIAL DRIVE  
P.O. BOX 1178  
MATTAPoisSETT, MA 02739  
TEL. (608) 758-2749  
FAX: (608) 758-2849

THE CROCKETT BUILDING  
4 COURT STREET, SUITE 104  
TAUNTON, MA 02780  
TEL. (608) 824-9279  
FAX: (608) 824-9276

Project No.	Sheet
-------------	-------

1948	1 OF 6
------	--------

ENGINEER:

FIELD ENGINEERING CO., INC.  
11D INDUSTRIAL DRIVE  
P.O. BOX 1178  
MATTAPAN, MASSACHUSETTS 02739

APPLICANT/OWNERS:

HIGHLAND NEW BEDFORD ASSOCIATES PARTNERSHIP  
65 SPRAGUE STREET  
HYDE PARK, MASSACHUSETTS 02136

**PROJECT LOCATION:**

200 THEODORE H. RICE BOULEVARD  
ASSESSORS MAP 136, LOTS 323, 354 AND 466  
NEW BEDFORD, MASSACHUSETTS







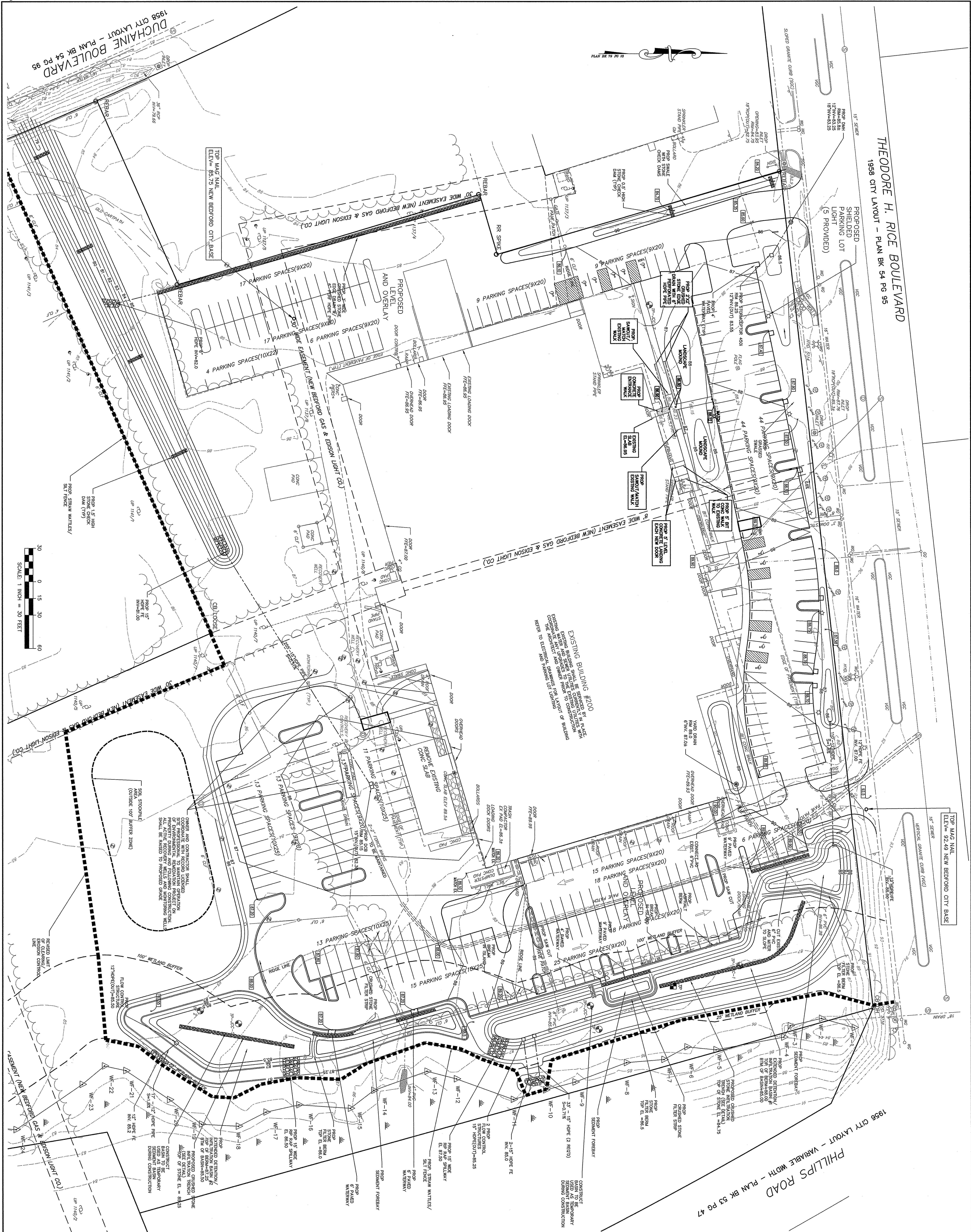
[illegible]

200 THEODORE H. RICE BOULEVARD  
NEW BEDFORD, MASSACHUSETTS

Project No.	Sheet
1948	3

Sheet No. 014





**FIELD  
ENGINEERING  
CO., INC.**  
CONSULTING ENGINEERS

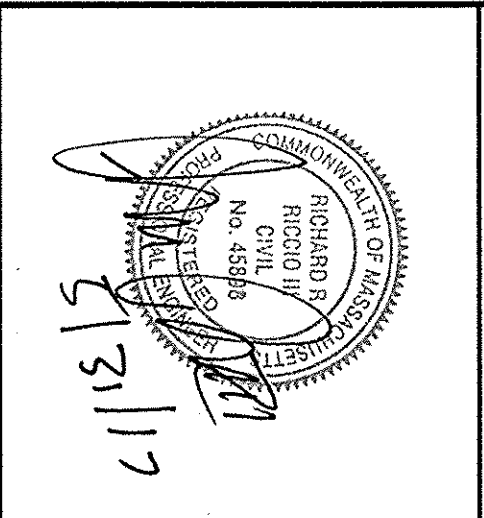
110 INDUSTRIAL DRIVE  
P.O. BOX 1178  
MATTAPANSETT, MA 02739  
TEL: (508) 752-2749  
FAX: (508) 752-2348

THE CROCKER BUILDING  
4 COURT STREET SUITE 104  
TALANTON, MA 02780  
TEL: (508) 824-9279  
FAX: (508) 824-9276

Revisions			
1	FINAL REVISION PER SITE PLAN APPROVAL	02/27/2018	RRR
N/A	Description	Date	Approved
Date	10/19/16		
Scale	1"=30'		
Drawn By	Designed by	Checked by	
RMS/JCC	JCC	RRR	

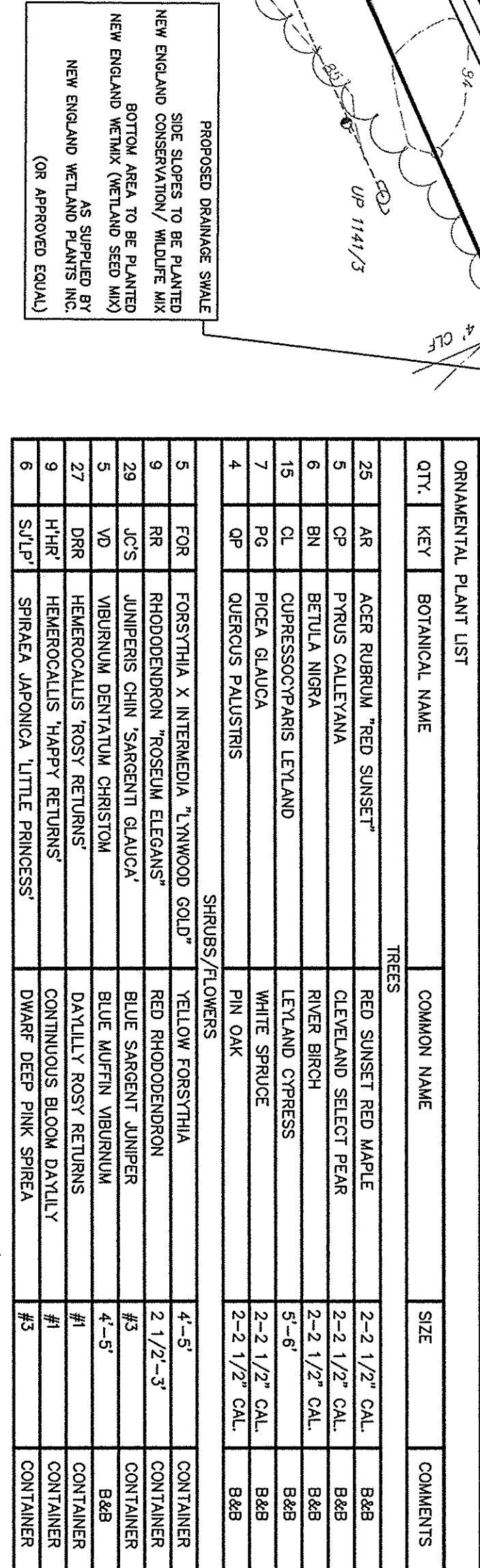
Issued For

## SITE PLAN MODIFICATION



Project No. 1948	Sheet 4 OF 6	Drawing Title SITE GRADING & DRAINAGE PLAN	PROPOSED SITE IMPROVEMENTS
			FIRST HIGHLAND MANAGEMENT AND DEVELOPMENT CORPORATION
Sheet No. SG-1			200 THEODORE H. RICE BOULEVARD
			NEW BEDFORD, MASSACHUSETTS





Project No. 1948	Sheet 5 OF 6
Drawing Title <b>LANDSCAPING PLAN</b>	
Sheet No. <b>LAND-1</b>	

200 THEODORE H. RICE BOULEVARD  
NEW BEDFORD, MASSACHUSETTS

COMMONWEALTH OF MASSACHUSETTS  
RICHARD R. RIDGEMAN  
JUDGE OF THE COURT OF CIVIL  
No. 45935  
JAN 31 1997  
JAN 31 1997

**FIELD  
ENGINEERING  
CO., INC.**  
CONSULTING ENGINEERS

110 INDUSTRIAL DRIVE  
P.O. BOX 1178  
MATTAPANSETT, MA 02738  
TEL: (603) 758-2749  
FAX: (603) 758-2846

THE CROCKER BUILDING  
4 COLIER STREET, SUITE 104  
TAUNTON, MA 02786  
TEL: (508) 824-9279  
FAX: (508) 824-9276



Revisions

NO	DATE	DESCRIPTION	BY	APP'D
1	10/19/16	FINAL REVISIONS	SC2017	RRR
2		REVISIONS	SC2017	RRR
3		REVISIONS	SC2017	RRR
4		REVISIONS	SC2017	RRR
5		REVISIONS	SC2017	RRR
6		REVISIONS	SC2017	RRR
7		REVISIONS	SC2017	RRR
8		REVISIONS	SC2017	RRR
9		REVISIONS	SC2017	RRR
10		REVISIONS	SC2017	RRR

**SITE PLAN  
MODIFICATION**



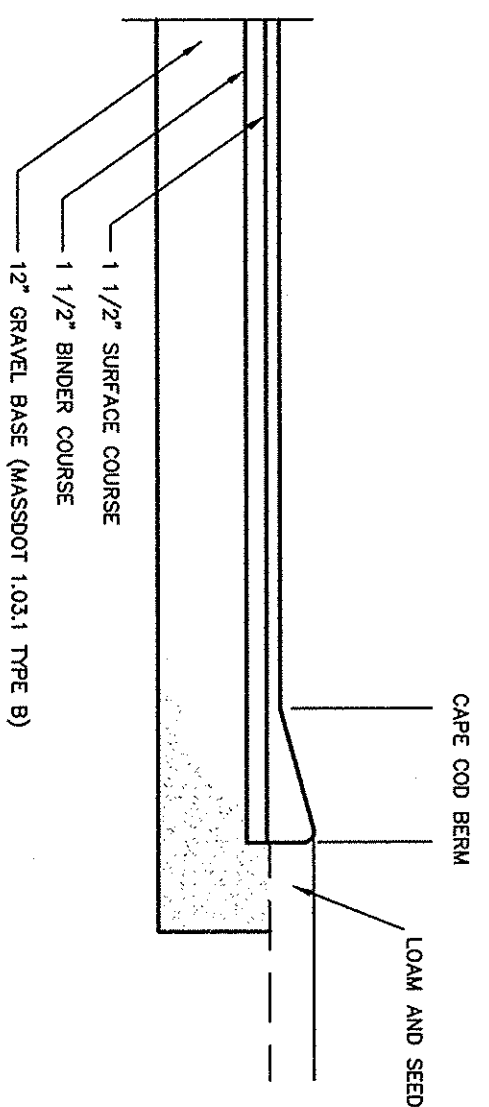
**PROPOSED SITE IMPROVEMENTS**  
**FIRST HIGHLAND MANAGEMENT AND DEVELOPMENT CORPORATION**

200 THEODORE H. RICE BOULEVARD  
NEW BEDFORD, MASSACHUSETTS

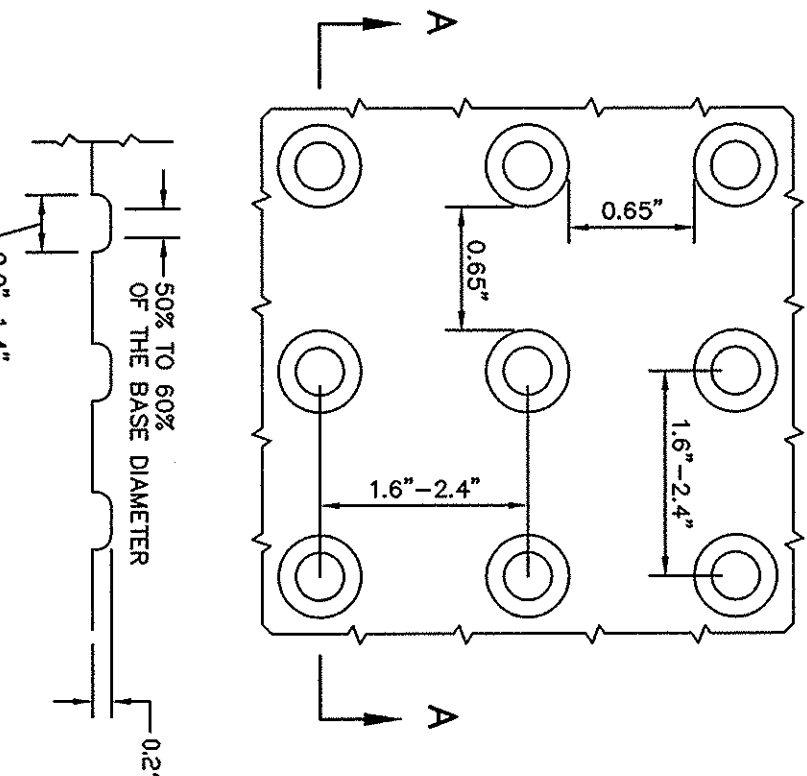
**SITE  
DETAILS**

Project No.	Sheet
1948	6 OF 6

D-1



**TYPICAL PARKING AREA SECTION**  
NOT TO SCALE



**DETECTABLE WARNING  
PANEL DETAIL**  
NOT TO SCALE

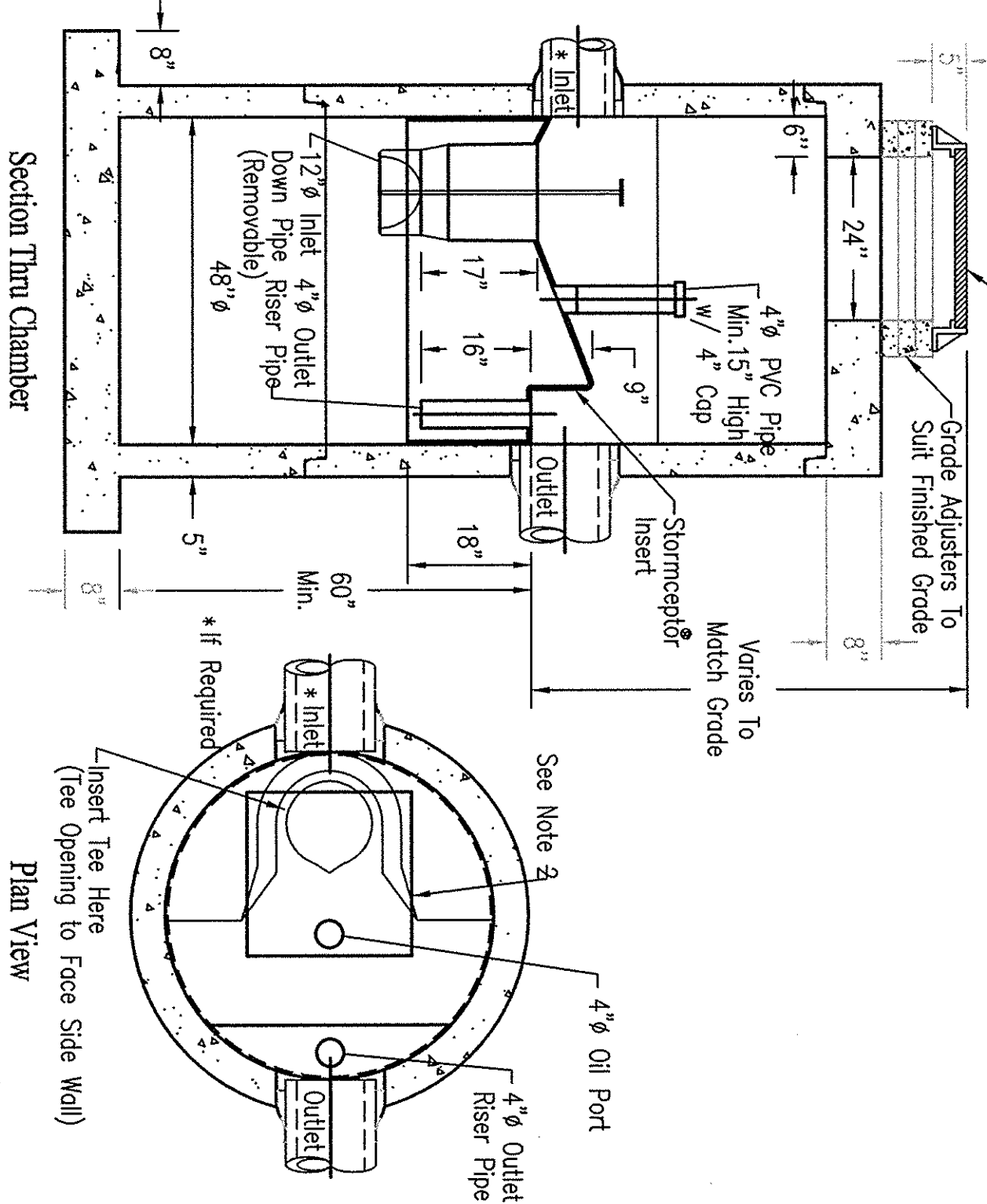
NOTE:  
1. PANELS SHALL BE 24" SQUARE AS MANUFACTURED BY ADA SOLUTIONS, INC.  
2. PANELS SHALL BE YELLOW IN COLOR UNLESS OTHERWISE SPECIFIED.

**LIGHT POLE BASE**  
NOT TO SCALE

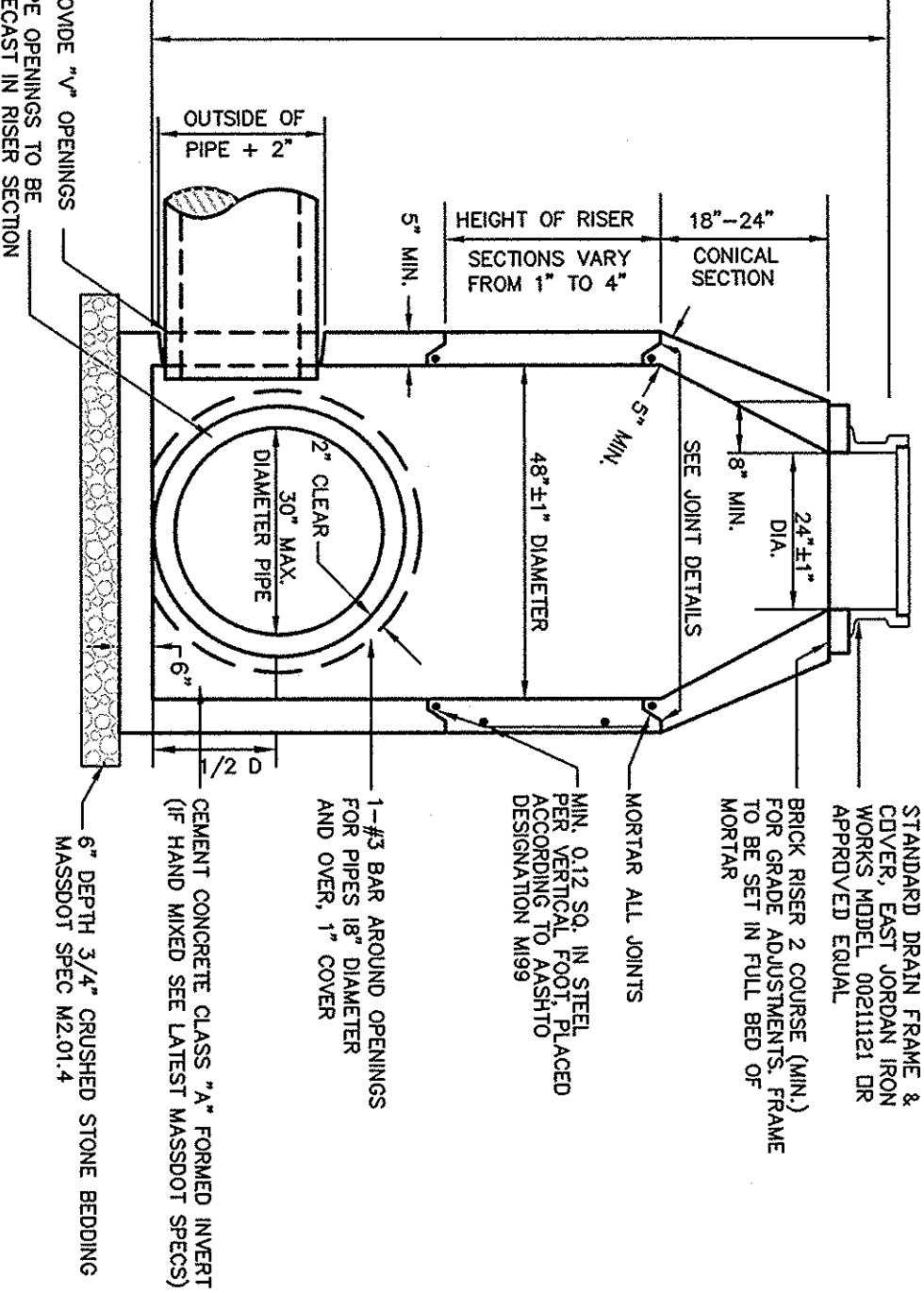
NOTES:  
1. ALL CONDITIONS SHALL BE BUILT TO MEET THE REQUIREMENTS OF THE CITY OF NEW BEDFORD.  
2. ALL CONDITIONS SHALL BE BUILT TO MEET THE REQUIREMENTS OF THE CITY OF NEW BEDFORD.  
3. ALL CONDITIONS SHALL BE BUILT TO MEET THE REQUIREMENTS OF THE CITY OF NEW BEDFORD.  
4. ALL CONDITIONS SHALL BE BUILT TO MEET THE REQUIREMENTS OF THE CITY OF NEW BEDFORD.  
5. ALL CONDITIONS SHALL BE BUILT TO MEET THE REQUIREMENTS OF THE CITY OF NEW BEDFORD.

**Concrete Pipe Division**

**STC 4501 Precast Concrete Stormceptor**  
(450 U.S. Gallon Capacity)

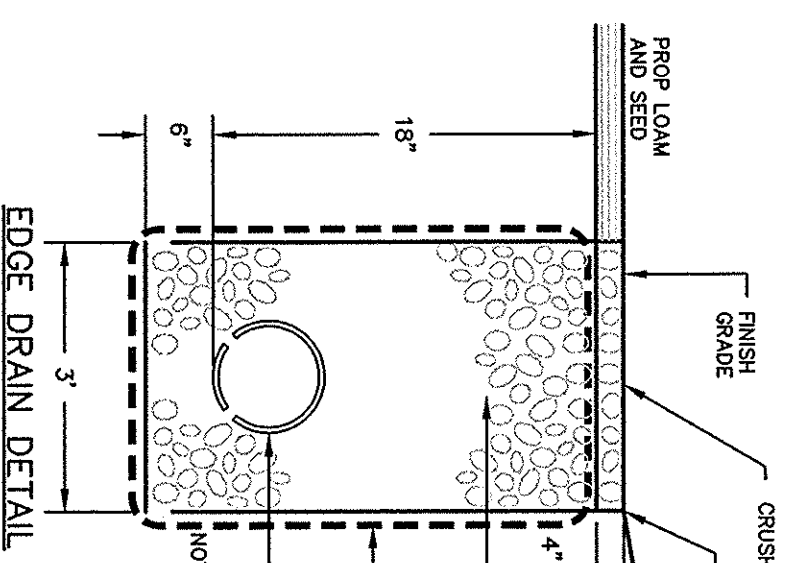


Notes:  
1. The Use Of Flexible Connection Is Recommended At The Inlet And Outlet Where Applicable.  
2. The Cover Should Be Positioned Over The Inlet Drop Pipe and The Oil Port.  
3. The Stormceptor System Is Protected By One Or More of the Following U.S. Patents: #4985148, #5498351, #5725760, #5753115, #5849181, #6068765, #6371690.  
4. Contact a Concrete Pipe Division representative for further details not listed on this drawing.

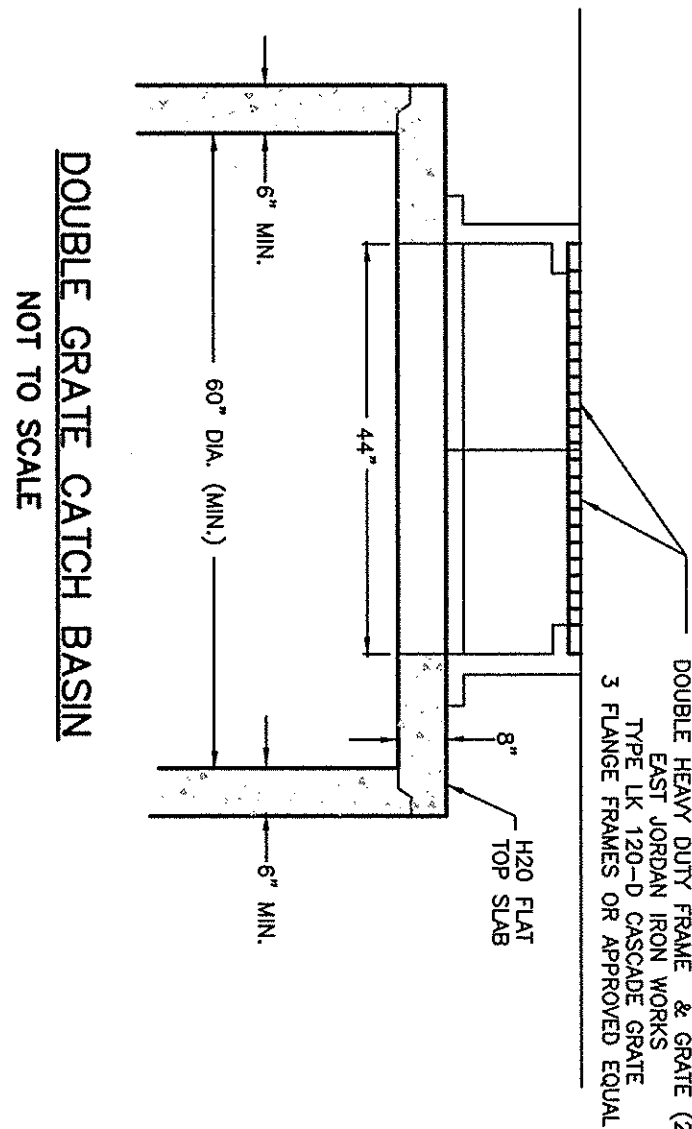


**TYPICAL DRAIN MANHOLE**  
NOT TO SCALE

NOTES:  
1. MANHOLE DESIGN TO CONFORM TO ASTM C878 LATEST REVISION.  
2. CONCRETE SHALL BE WET CAST 4000 P.S.I. @ 28 DAYS.  
3. THE TOP SURFACE SHALL BE FINISHED GRADE ELEVATION MINUS THE USE OF THE FINISH GRADE ELEVATION.  
4. ALL OUTSIDE FACES OF ALL MANHOLE JOINTS WITH NON-SHRINK MORTAR. PLANS, THEIR CONSTRUCTION SHALL MEET THE TYPICAL DRAIN MANHOLE SPECIFICATIONS.



**EDGE DRAIN DETAIL**  
NOT TO SCALE

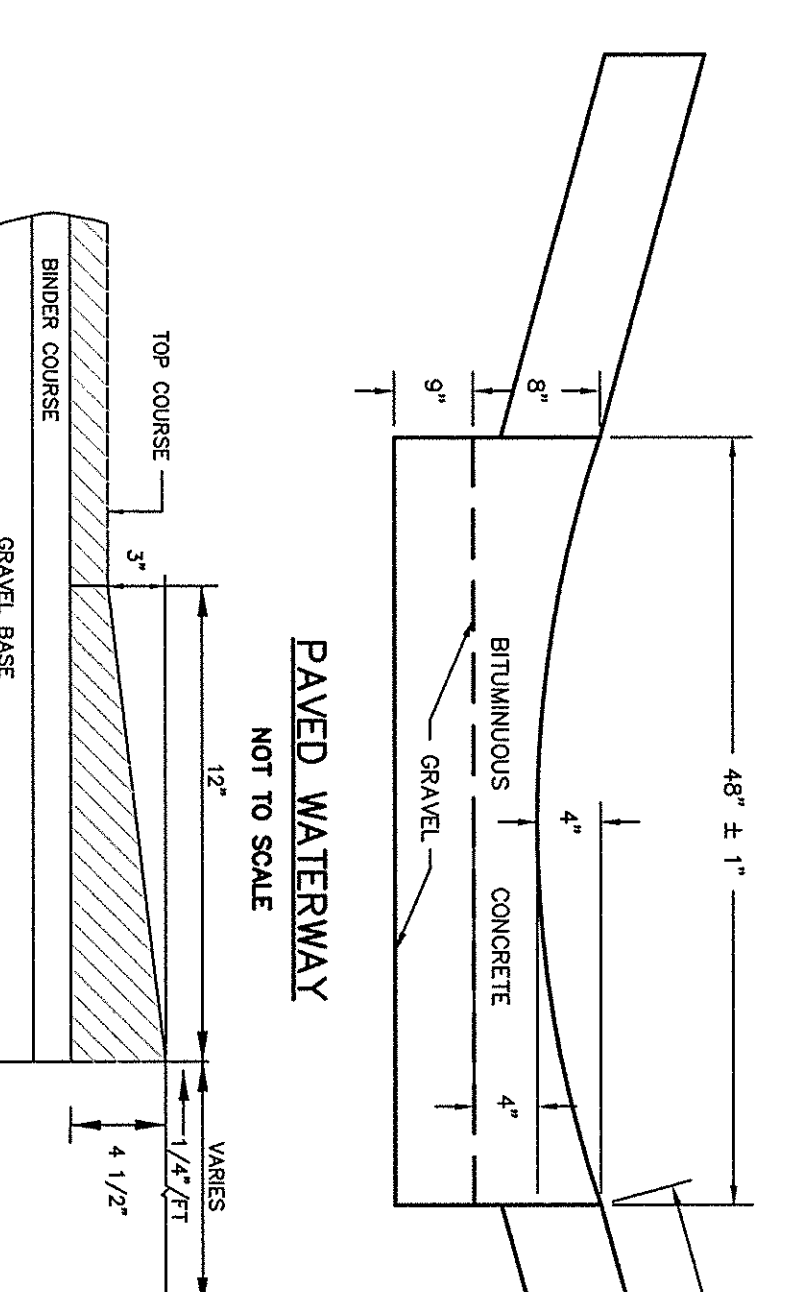


**DOUBLE GRATE CATCH BASIN**  
NOT TO SCALE

NOTES:  
1. CATCH BASIN DESIGN TO CONFORM TO ASTM C878 LATEST REVISION.  
2. CONCRETE SHALL BE WET CAST 4000 P.S.I. @ 28 DAYS.  
3. THE TOP SURFACE SHALL BE FINISHED GRADE ELEVATION MINUS THE USE OF THE FINISH GRADE ELEVATION.  
4. ALL OUTSIDE FACES OF ALL MANHOLE JOINTS WITH NON-SHRINK MORTAR. PLANS, THEIR CONSTRUCTION SHALL MEET THE TYPICAL DRAIN MANHOLE SPECIFICATIONS.

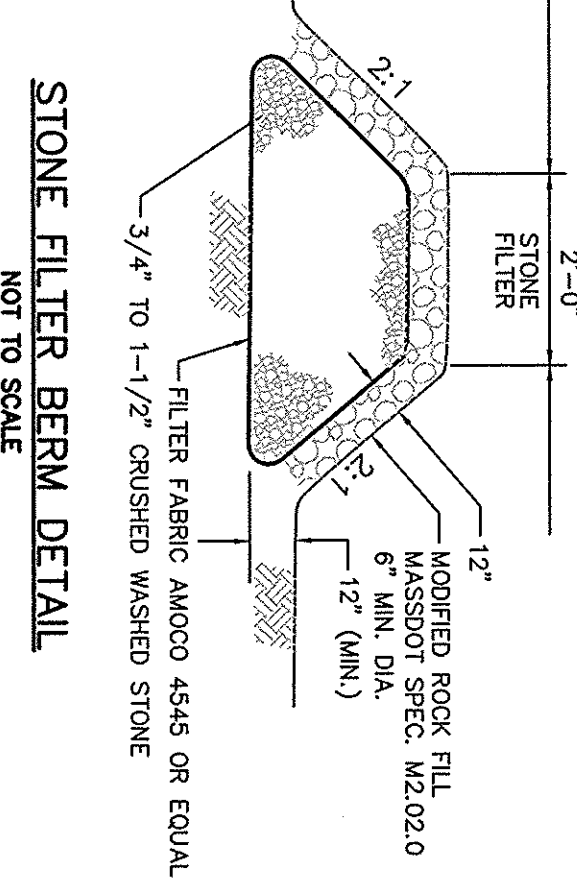
**TYPICAL CATCH BASIN**  
NOT TO SCALE

NOTES:  
1. CATCH BASIN DESIGN TO CONFORM TO ASTM C878 LATEST REVISION.  
2. CONCRETE SHALL BE WET CAST 4000 P.S.I. @ 28 DAYS.  
3. THE TOP SURFACE SHALL BE FINISHED GRADE ELEVATION MINUS THE USE OF THE FINISH GRADE ELEVATION.  
4. ALL OUTSIDE FACES OF ALL MANHOLE JOINTS WITH NON-SHRINK MORTAR. PLANS, THEIR CONSTRUCTION SHALL MEET THE TYPICAL DRAIN MANHOLE SPECIFICATIONS.

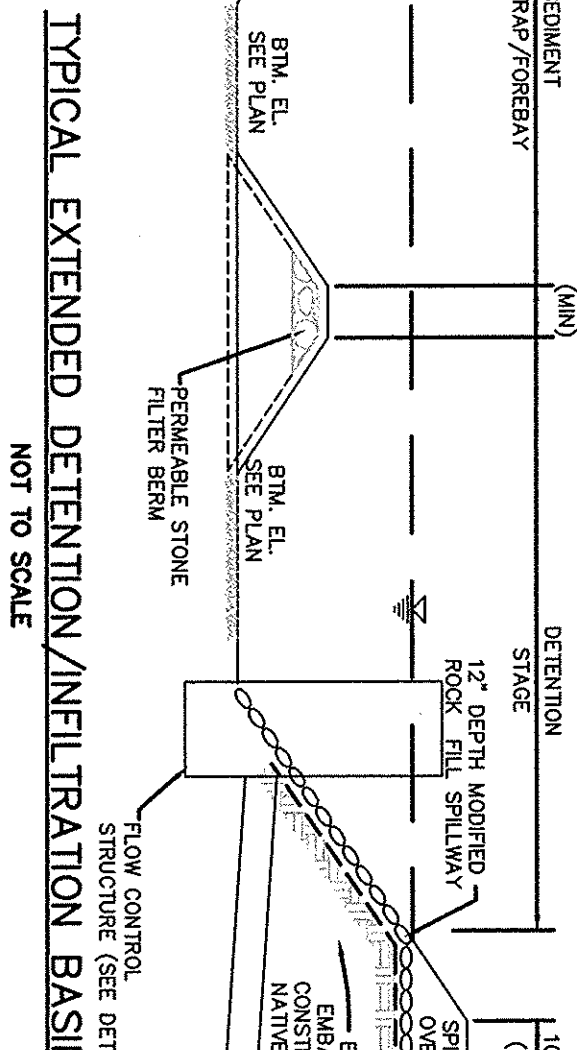


**PAVED WATERWAY**  
NOT TO SCALE

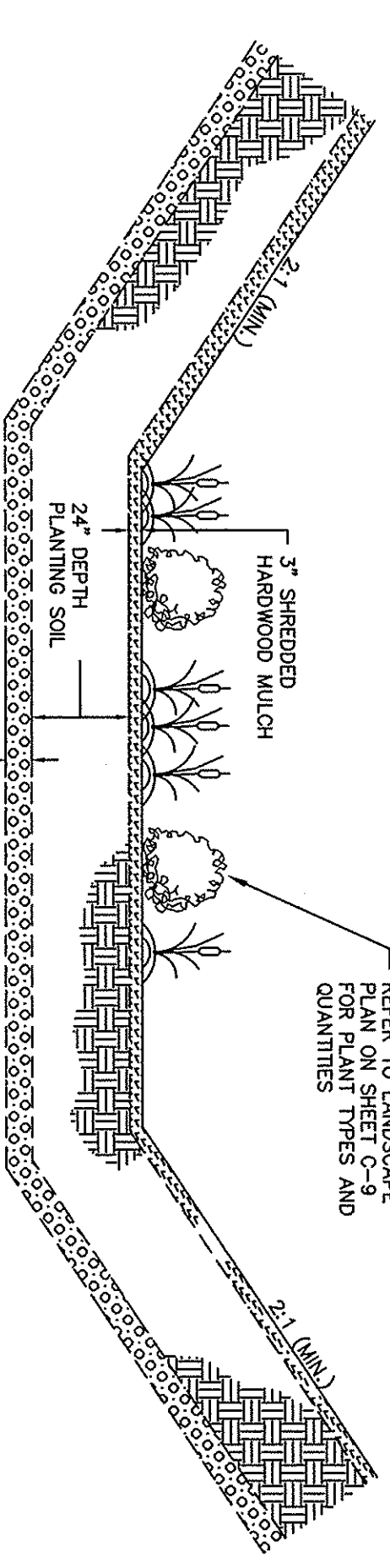
**TYPE "A" CURE COD BERM**  
NOT TO SCALE



**STONE FILTER BERM DETAIL**  
NOT TO SCALE

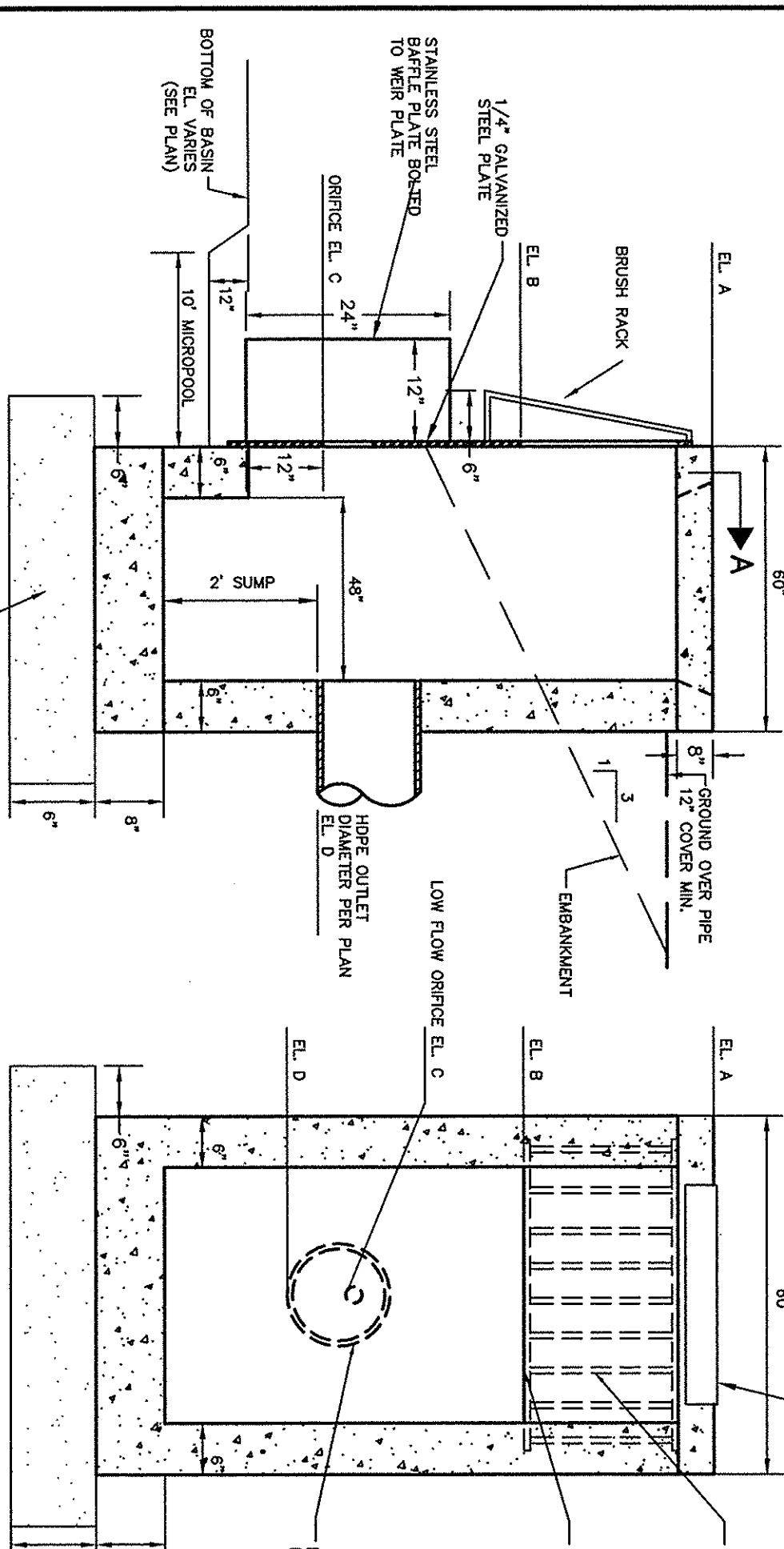


**TYPICAL EXTENDED DETENTION/INFILTRATION BASIN**  
NOT TO SCALE



**BIORETENTION AREA SECTION**  
NOT TO SCALE

1.) PLANTING SOIL MIX SHALL BE A Mixture OF SAND COMPOST AND SOIL COMPRISED OF THE FOLLOWING:  
40% SAND/60% COMPOST  
2.) SAND BED SHALL CONFORM TO ASTM D422 MAX. STONE SIZE - 3/4 INCH AND NO GREATER THAN 3.0% PASSING NO. 200 SIEVE.

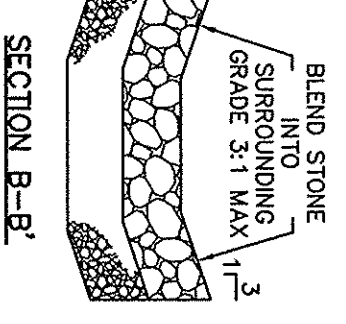


**SECTION A-A  
FLOW CONTROL STRUCTURE**  
NOT TO SCALE

**OUTLET PLATE**  
NOT TO SCALE

STRUCTURE:	A	B	C	D	E	F	G	H	I
Basin #1 (2 RECD)	88.00	86.40	85.25	85.25	48"	5"	17"	54"	
Basin #2	87.25	86.25	85.85	85.50	24"	13"	9"	30"	

**ELEVATION/DIMENSION TABLE**



**SECTION B-B**