

CITY CLERKS OFFICE  
NEW BEDFORD, MA

2017 APR 14 A 10: 59

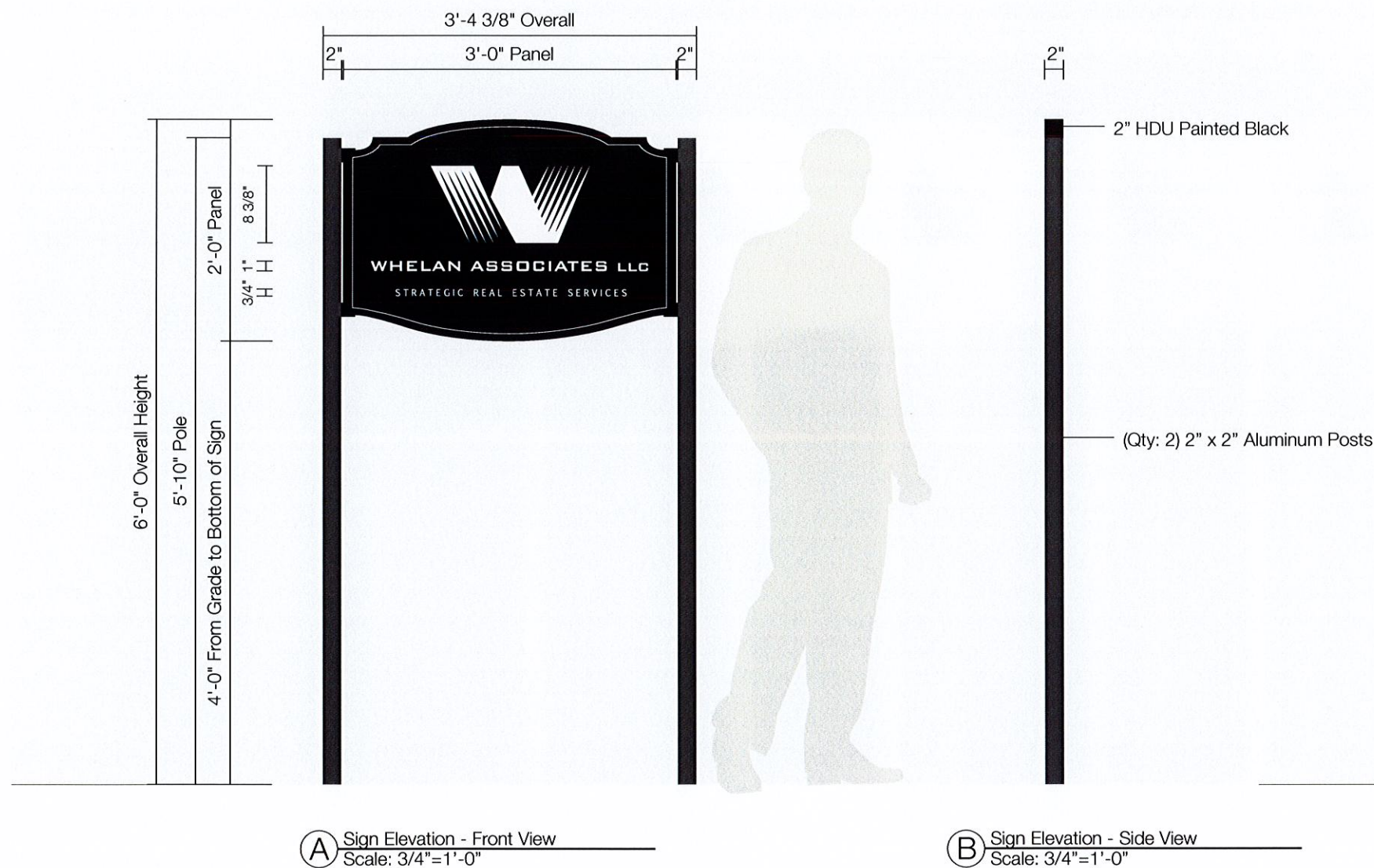
CITY CLERK

Whelan Associates | 70 North Second Street, New Bedford MA | Freestanding Sign Location | March 24, 2017

---

**Poyant**  
Building Your Brand

Case 16-17  
04/14/2017



CITY CLERKS OFFICE -  
NEW BEDFORD, MA

2017 APR 14 A 10: 59

CITY CLERK

#### Specifications

Qty = 1

6 Sq Ft Per Side

#### Double Face Non Illuminated Pylon Sign

- 2" HDU sign face, face and returns painted black
- Opaque digital print applied to both faces
- Face to be attached to poles with 1 1/2" x 1 1/2" x 3/16" aluminum angle and mechanical fasteners into HDU
- Angle to be welded to poles
- (Qty: 2) 2" x 2" Aluminum poles
- Angle and all exposed fasteners to be painted black
- Poles to be painted gray
- Poles to be in (Qty: 2) direct burial foundations of 12" dia x 4'-0" D

#### Colors & Materials

##### Paint

- Black Paint; Satin Finish
- Gray Paint; Satin Finish - Akzo Nobel 499 F3

##### Digital Prints

- (Qty: 2) 36"W x 24"H
- Opaque digital prints with adhesive backing and UV protectant. Contour Cut, No Masking.

**Poyant**  
Building Your Brand

125 Samuel Barnett Boulevard  
New Bedford, MA 02745  
800.544.0961 | poyantsigns.com

Whelan Associates

70 North Second Street  
New Bedford MA

Project: 11420  
Whelan Associates

Sales: Stephanie Poyant Moran  
Date: 09.27.16  
Designer: JST

**Note:**  
This is an original unpublished drawing created by Poyant Signs, Inc. It is submitted for your personal use in connection with a project being planned for you by Poyant Signs, Inc. It is not to be shown to anyone outside your organization, nor is it to be reproduced, copied or exhibited in any fashion until transferred.

**Revisions:**  
10.26.16 JST Added to Pkg  
11.09.16 JST Increased text size  
11.09.16 JST Increased text size  
03.24.17 ST Added Location Plan

**UL**  
This sign is intended to be installed in accordance with the requirements of Article 600 of the National Electrical Code and / or other applicable local codes. This includes proper grounding and bonding of the sign.

Approved By:

Date:

Pylon Sign

Option D

Case 16-17  
04/14/2017

Sign Type 11420.1D-R1 1D.1





**A** Photo Comp - Existing  
Not to Scale



**B** Photo Comp - Proposed  
Not to Scale

\* Sign is mounted at a 45° angle to street

CITY CLERKS OFFICE  
NEW BEDFORD, MA

2017 APR 14 A 10:59

CITY CLERK

**Poyant**  
Building Your Brand

125 Samuel Barnett Boulevard  
New Bedford, MA 02745  
800.544.0961 | poyantsigns.com

Whelan Associates

70 North Second Street  
New Bedford MA

Project: 11420  
Whelan Associates

Sales: Stephanie Poyant Moran  
Date: 09.27.16  
Designer: JST

**Note:**  
This is an original unpublished drawing created by Poyant Signs, Inc. It is submitted for your personal use in connection with a project being planned for you by Poyant Signs, Inc. It is not to be shown to anyone outside your organization, nor is it to be reproduced, copied or exhibited in any fashion until transferred.

**Revisions:**  
10.26.16 JST Added to pkg  
03.24.17 ST Added Location Plan

**UL**  
This sign is intended to be installed in accordance with the requirements of Article 600 of the National Electrical Code and / or other applicable local codes. This includes proper grounding and bonding of the sign.

Approved By:

Date:

Pylon Sign

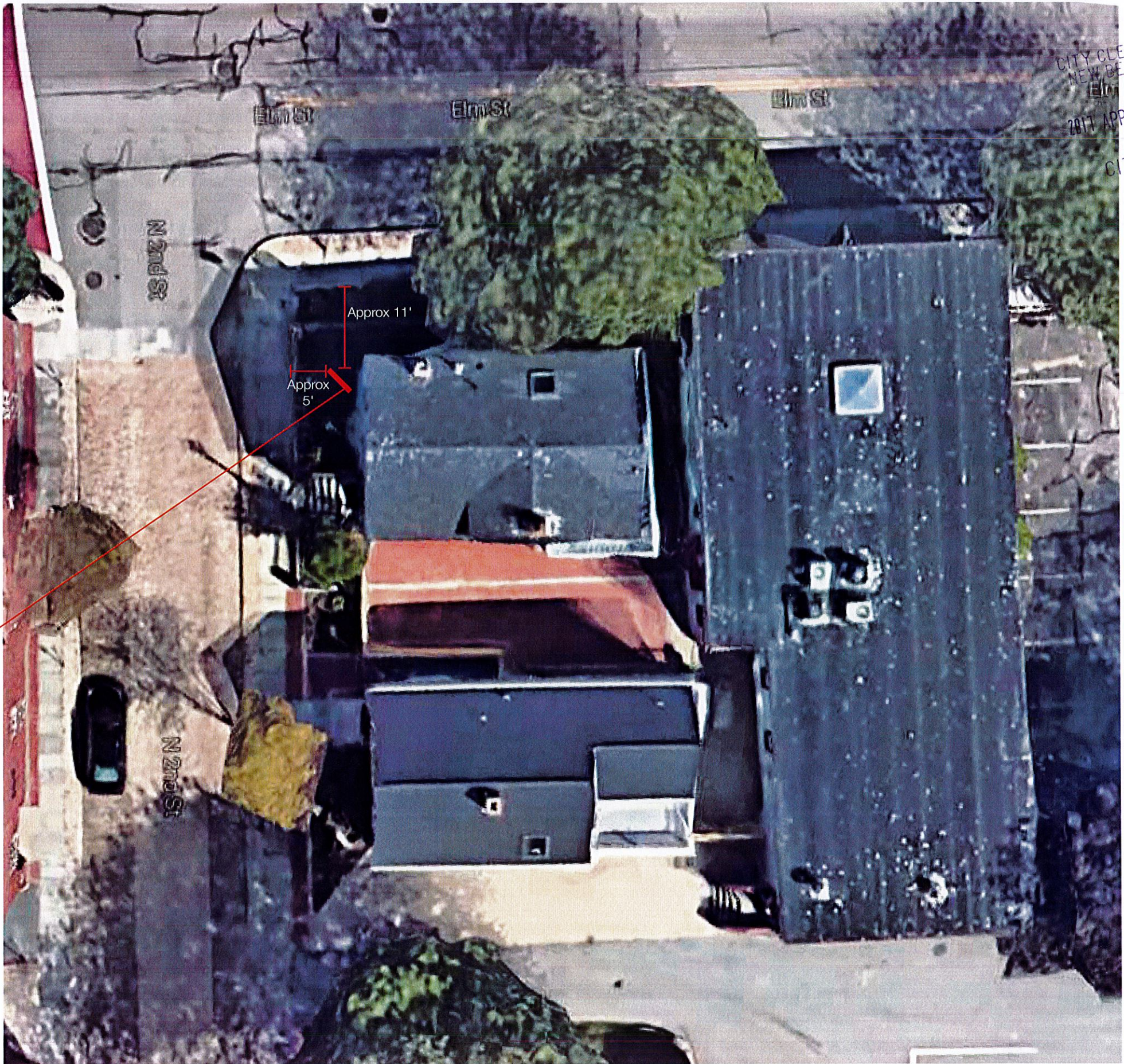
Option D

Case 16-17  
04/14/2017

Sign Type 11420.1D

1D.2





CITY CLERKS OFFICE  
NEW BEDFORD, MA  
2017 APR 14 A 10:59  
CITY CLERK

Sign Placement

A Sign Location Plan  
Not to Scale

**Poyant**  
Building Your Brand

125 Samuel Barnett Boulevard  
New Bedford, MA 02745  
800.544.0961 | poyantsigns.com

Whelan Associates


70 North Second Street  
New Bedford MA

Project: 11420  
Whelan Associates

Sales: Stephanie Poyant Moran  
Date: 09.27.16  
Designer: JST

Note:  
This is an original unpublished drawing created by Poyant Signs, Inc. It is submitted for your personal use in connection with a project being planned for you by Poyant Signs, Inc. It is not to be shown to anyone outside your organization, nor is it to be reproduced, copied or exhibited in any fashion until transferred.

Revisions:  
10.26.16 JST Added to pkg  
03.24.17 ST Added Location Plan

  
This sign is intended to be installed in accordance with the requirements of Article 600 of the National Electrical Code and / or other applicable local codes. This includes proper grounding and bonding of the sign.

Approved By:

Date:

Pylon Sign

Option D

Case 16-17  
04/14/2017

Sign Type 11420.1D 1D.3