



# *City of New Bedford*

## Department of Planning, Housing & Community Development

133 William Street, New Bedford, Massachusetts 02740

Telephone: (508) 979.1488 Facsimile: (508) 979.1576

### MEMORANDUM

**DATE:** March 2, 2017

**TO:** Planning Board

**FROM:** Constance Brawders, Staff Planner

**SUBJECT:** Additional Materials for Case 02-17: Xcel Brazilian Jiu Jitsu

---

The following materials were received by the Planning Division after the final Staff Report was approved:

- Lighting Tear Sheet
- Wall Sign Elevation Plan prepared for Xcel Brazilian Jiu Jitsu dated 02/23/2017 prepared by Poyant Signs, 125 Samuel Barnet Blvd, New Bedford, MA
- Site Plan showing location of wall sign prepared for Xcel Brazilian Jiu Jitsu dated 02/23/2017 prepared by Poyant Signs, 125 Samuel Barnet Blvd, New Bedford, MA
- Building Sign Color and Material Specifications prepared for Xcel Brazilian Jiu Jitsu dated 02/23/2017 prepared by Poyant Signs, 125 Samuel Barnet Blvd, New Bedford, MA
- Lighting Plan for Xcel Brazilian Jiu Jitsu, New Bedford, MA , dated January 23, 2017, prepared by Boucher & Heureux, Inc., 548 American Legion Hwy, Suite One, Westport, MA 02790

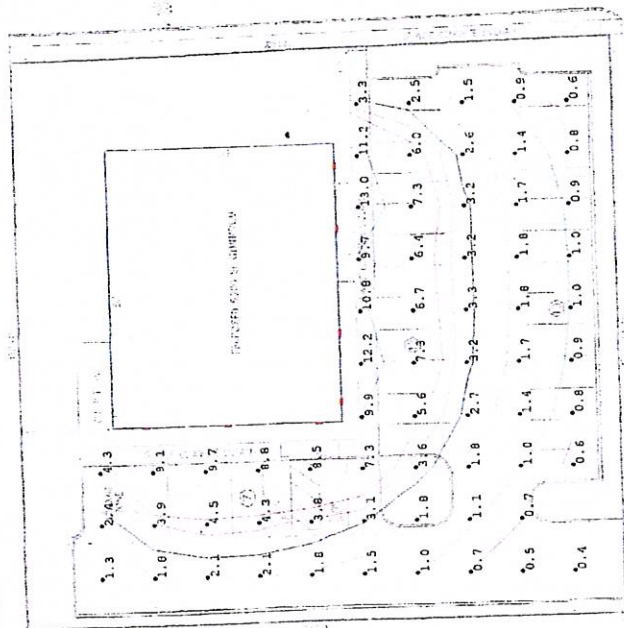
Luminaire Schedule		Description	
Symbol	Qty	Label	
1	7	LW96-BR2-110-00	Lumetec LP96 90 Watt Wall Pack

Calculation Summary		CalcType		Units		Avg		Max		Min		Avg/Min		Max/Min	
Label	Parking Lot	Illuminance		Fc		3.78		13.0		0.4		9.45		32.50	

PARALLEL SCALE INCHES  
1" = 10'-0"

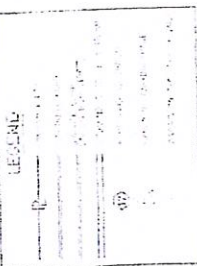
# CONSTRUCTION NOTES

TACONIA STREET



CHURCH STREET

LEGEND



NEW BEDFORD  
SITE LOCUS

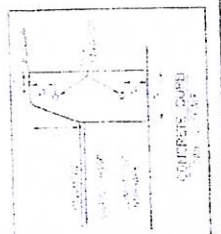
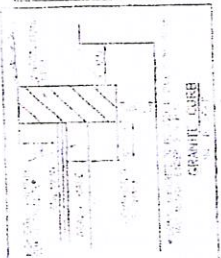
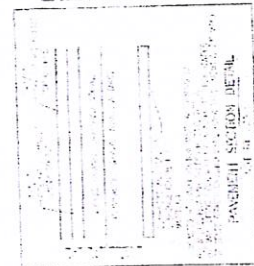
**LIGHTING**  
**LAYOUT & LANDSCAPE PLAN**  
XCEL BRAZILIAN JIU JITSU  
MAP 1500-1 FORMERLY LOTS 22, 41-44  
NEW BEDFORD, MASSACHUSETTS  
PREPARED FOR  
MARCIO SILVA

SCALE: 1" = 20' DATE: JANUARY 23, 2017

DESIGNED BY  
**Boucher & Heuroux, Inc.**  
CML ENGINEERS & LAND SURVEYORS  
649 MAPLE STREET, SUITE 201  
WESTPORT, MASSACHUSETTS 02790  
Tel: (508) 638-8962 Fax: (508) 638-1467  
www.boucher-engineers.com

STREET

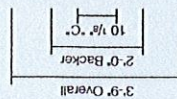
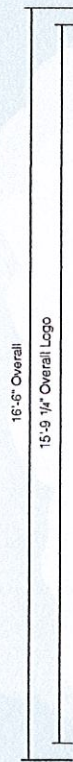
CHAFFEE



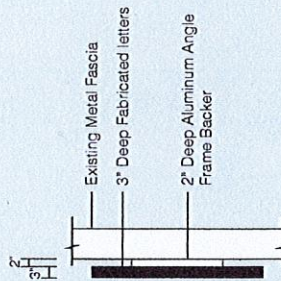
PLANNING  
MAR 01 2017  
DEPARTMENT

Case 02-17  
Rec'd 03/01/2017





(A) Sign Elevation - Front View  
Scale: 1/4" = 1'-0"



(B) Sign Elevation - Side View  
Scale: 1/4" = 1'-0"

Specifications  
Qty = 1 61.87 Sq Ft

Single Face Externally Illuminated Building Sign

- Backer**
- 2" Aluminum angle frame backer clad with .063" faces
  - Seams to be in equal intervals
  - Face and returns painted white
  - Flush mount to building metal fascia as required
- Logo**
- 3" Deep fabricated letters
  - Faces and returns all painted black
  - Flush mount to backer panel as required
- External Illumination By Others**

- VIF**
- Customer to approve recreated logo
  - Access behind sign if applicable
  - What is behind wall it can get from survey
  - Thickness of wall
  - Wall material for proper mounting
  - CC of studs if any
  - Material of studs if any

Colors & Materials

- Paint**
- ☐ White Paint, Satin Finish
  - ☐ Light Gray, Satin Finish - Akzo Nobel SIGN 80432

- Vinyl**
- ☐ Blue, 3M 3630-36 (Stock)
  - ☐ Golden Yellow, 3M 3630-125 (Stock)

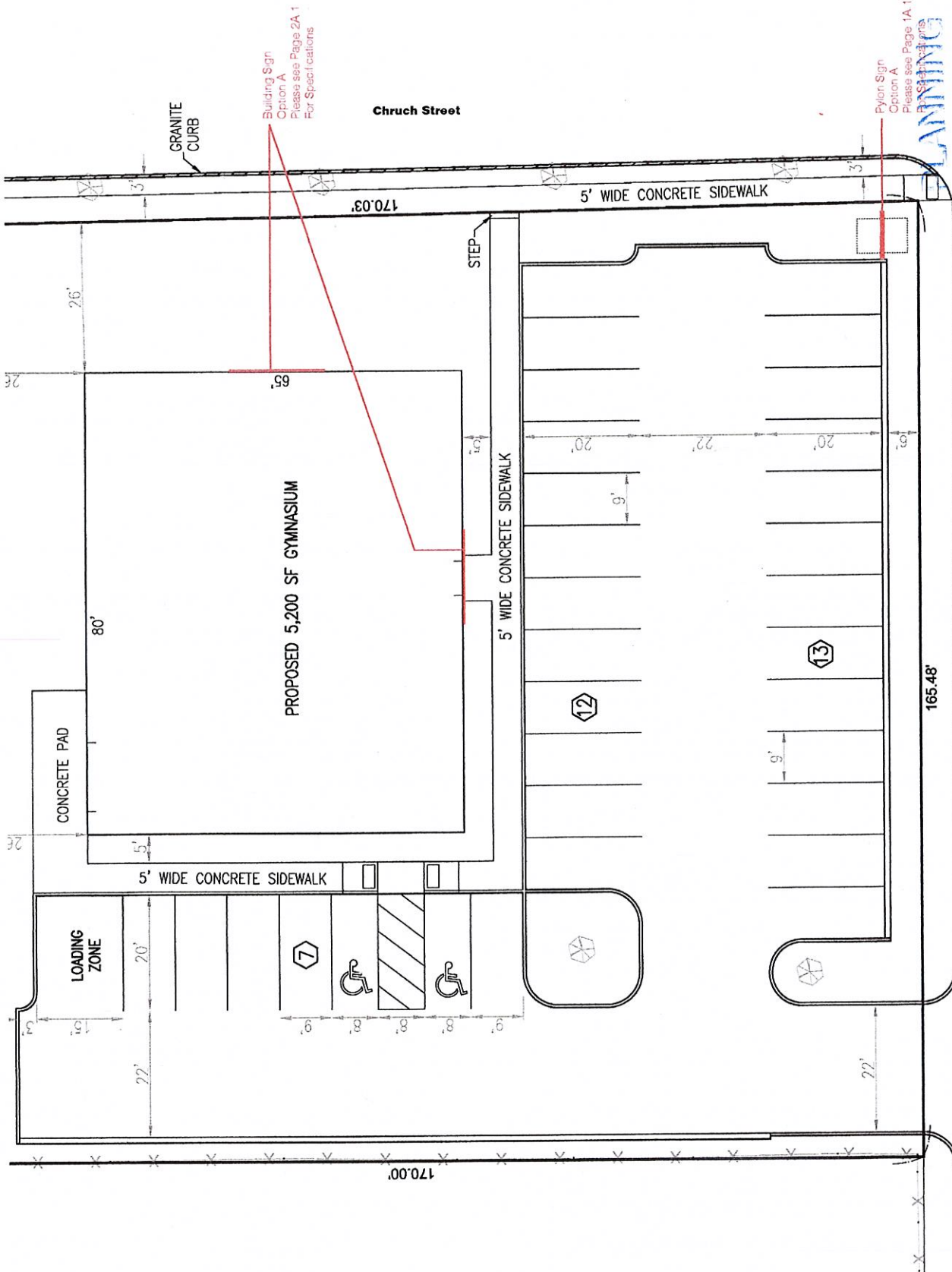
PLANNING

MAR 01 2017

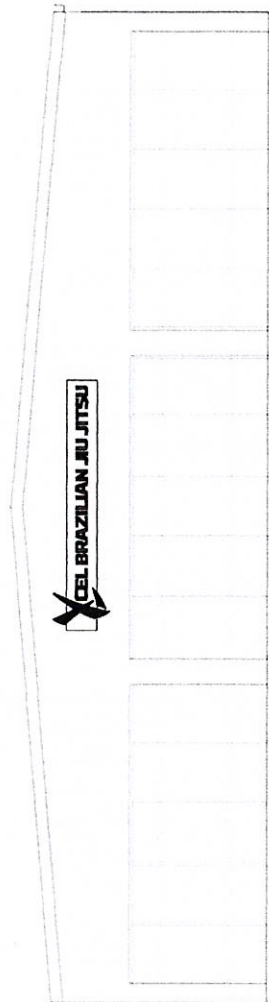
DEPARTMENT

PLANNING  
MAR 01 2017  
DEPARTMENT

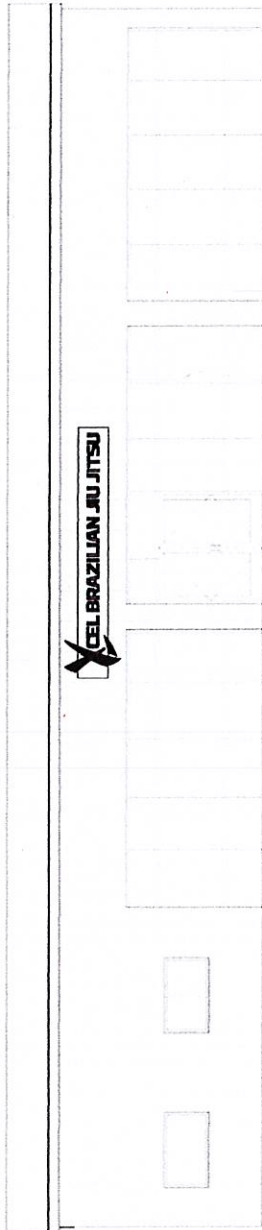
Chaffee Street



Case 02-17  
Rec'd 03/01/2017



**A** Photo Comp. - Proposed - East Elevation Church Street  
Not to Scale



**B** Photo Comp. - Proposed - South Elevation Chaffee Street  
Not to Scale

PLANNING  
MAR 01 2017  
DEPARTMENT  
DEPARTMENT





# LW96 LED WALL PACK

# LUMATEQ

## Full Wall Pack

### Features & Benefits

110-277V AC

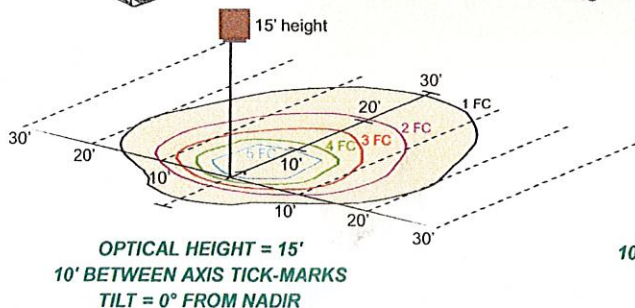
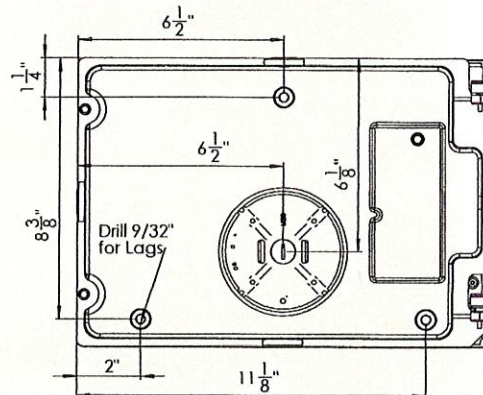
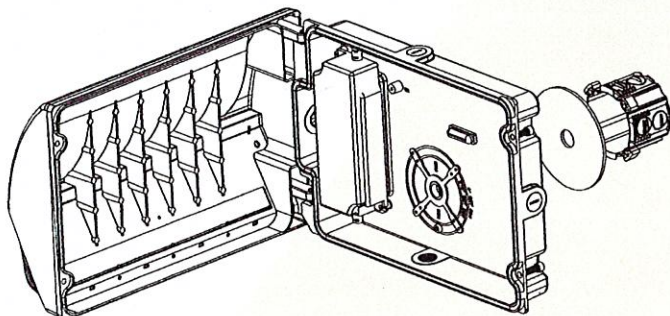
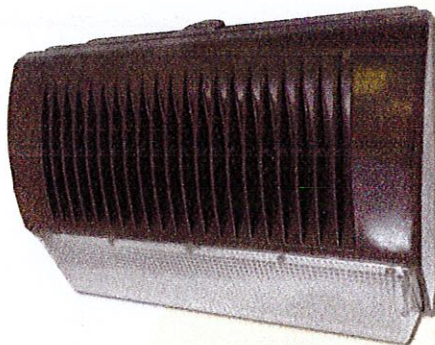
IP-RATING 65

ETL-LISTED

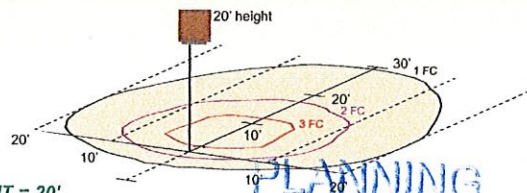
- LM80 tested
- Chromatically stable 5700K
- ETL-Listed; IP65 for "Wet Locations"
- Significantly longer life leads to reduced maintenance costs
- Traditional clamshell design for standard installation
- Heat sunked cast Aluminum housing
- Concealed fasteners
- Polycarbonate lens
- High temperature silicone seals
- Cold weather-resistant to -40°F
- Master pack comes in Pairs
- Built in level to speed up installation
- Weight: 7.5 lbs.



Chip- & Fade-Resistant  
Powder-Coated Finish  
in Dark Bronze



OPTICAL HEIGHT = 20'  
10' BETWEEN AXIS TICK-MARKS  
TILT = 0° FROM NADIR



MAR 01 2017

DEPARTMENT

Suggested Yearly  
Mounting Height Operating Cost\*\*

Part#	Input Wattage	Lumen Output	Lumens Per Watt	Replacement MH Lamp	Draw	CRI*	Mounting Height	Yearly Operating Cost**
LW96-BRZ-110-00	90.74-Watt	8,123	89.52	400-Watt	< .77 AMP @110V	82	18'-19'	\$35.77

Case 02-17

Rec'd 03/01/2017

\* Color Rendering Index

\*\* Based on 12 hours a day for 365 days

ETL listed for wet locations





# LW96 LED WALL PACK LUMATEQ

## Full Wall Pack

### Features & Benefits

110-277V AC

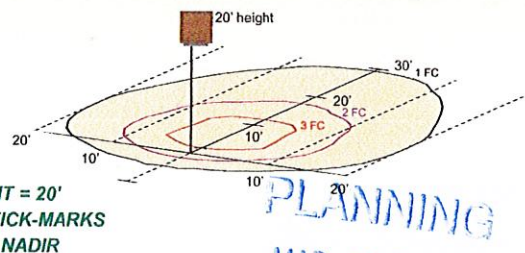
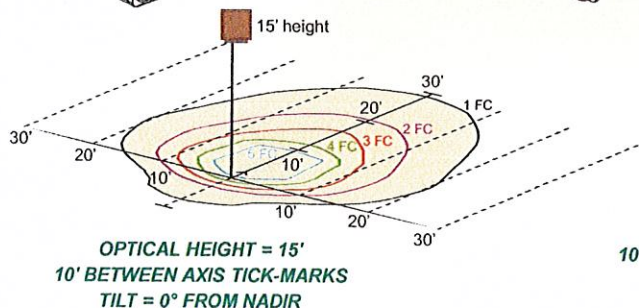
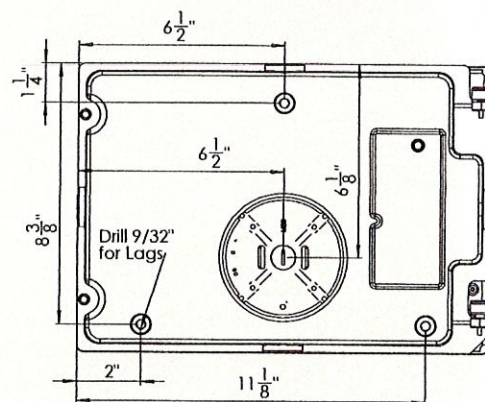
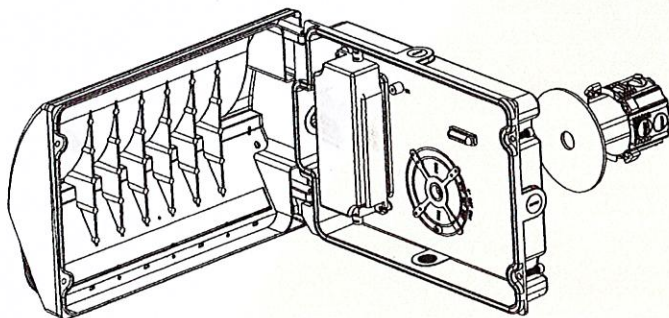
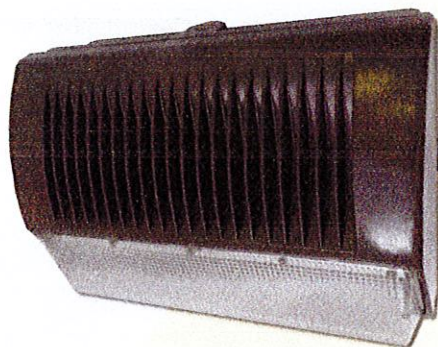
IP-RATING 65

ETL-LISTED

- LM80 tested
- Chromatically stable 5700K
- ETL-Listed; IP65 for "Wet Locations"
- Significantly longer life leads to reduced maintenance costs
- Traditional clamshell design for standard installation
- Heat sinked cast Aluminum housing
- Concealed fasteners
- Polycarbonate lens
- High temperature silicone seals
- Cold weather-resistant to -40°F
- Master pack comes in Pairs
- Built in level to speed up installation
- Weight: 7.5 lbs.



Chip- & Fade-Resistant  
Powder-Coated Finish  
in Dark Bronze



Part#	Input Wattage	Lumen Output	Lumens Per Watt	Replacement MH Lamp	Draw	CRI*	Suggested Mounting Height	Yearly Operating Cost**
LW96-BRZ-110-00	90.74-Watt	8,123	89.52	400-Watt	< .77 AMP @110V	82	18'-19'	\$35.77

Case 02-17  
Rec'd 03/01/2017

\* Color Rendering Index

\*\* Based on 12 hours a day for 365 days

ETL listed for wet locations





Project: 13354  
Xcel Brazilian Jiu-Jitsu

Sales: Stephanie Poy  
Date: 02.23.17  
Designer: JST

**Note:**

This is an original un-  
drawing created by Poyat  
Inc. It is submitted for  
personal use in connection  
with a project being planned  
by Poyat Signs, Inc.  
be shown to anyone (not  
organization, nor is it  
reproduced, copied or  
in any fashion until the

**Revisions:**




This sign is intended to be installed  
with the requirements of Article 100  
of the Regulations of the City of New  
Bedford. It is not a final design.  
This includes proper permitting and

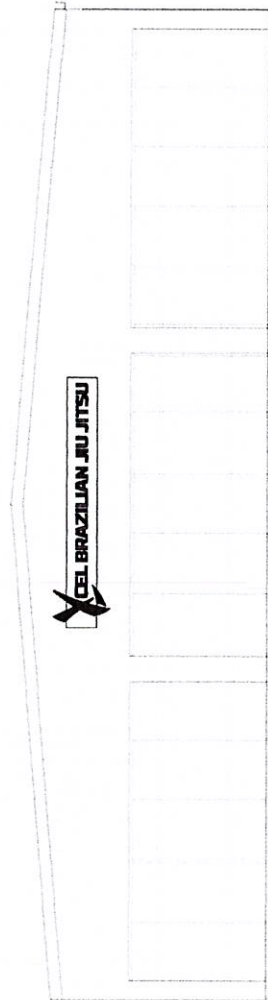
Approved By:

Date:

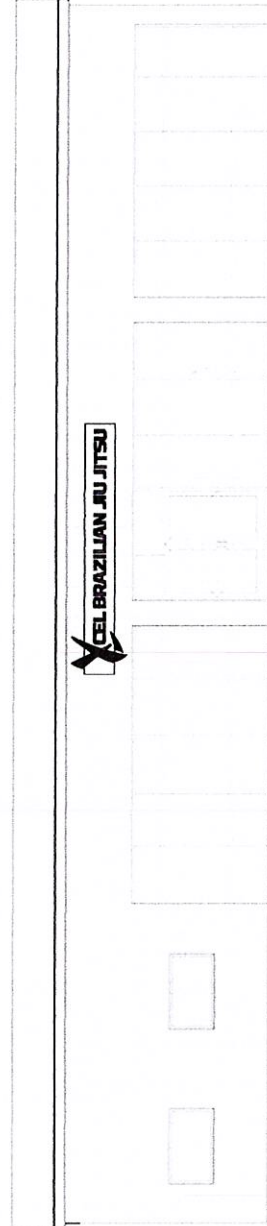
Building Sign

Option A

Sign Type: 13354/2A



**A** Photo Comp. - Proposed - East Elevation  
Not to Scale Church Street

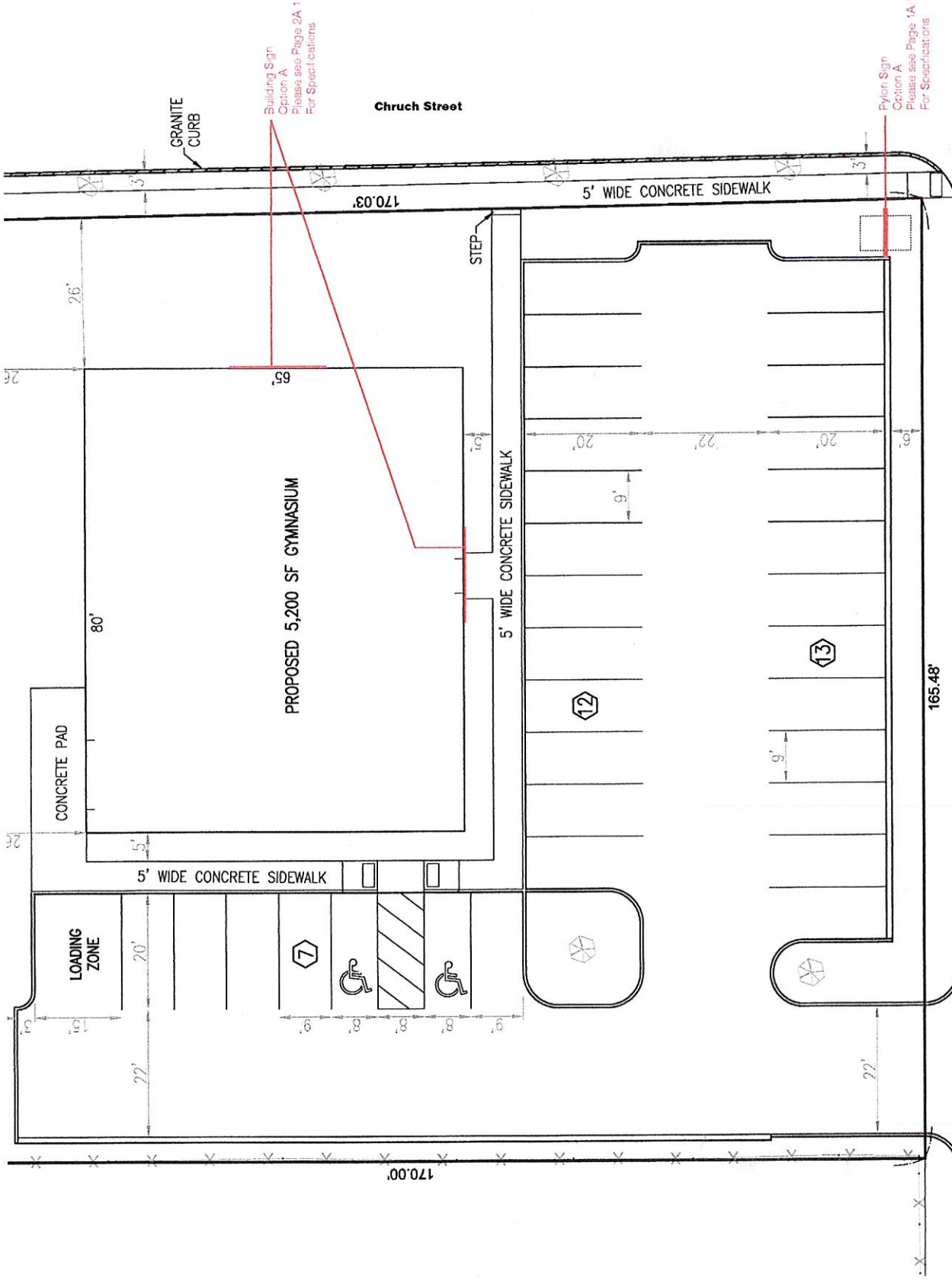


**B** Photo Comp. - Proposed - South Elevation  
Not to Scale Chatfield Street

Case 02-17  
Rec'd 03/01/2017

PLANNING  
MAR 01 2017  
DEPARTMENT





PLANNING

MAR 01 2017

DEPARTMENT

Chaffee Street

Specifications  
Qty = 1 61.87 Sq Ft

Single Face Externally Illuminated Building Sign

Backer

- 2" Aluminum angle frame backer clad with .063" faces
- Seams to be in equal intervals
- Face and returns painted white
- Flush mount to building metal fascia as required
- 3" Deep fabricated letters
- Faces and returns all painted black
- Flush mount to backer panel as required

External Illumination By Others

- VIF
- Customer to approve recreated logo
  - Access behind sign if applicable
  - What is behind wall it can get from survey
  - Thickness of wall
  - Wall material for proper mounting
  - CC of studs if any
  - Material of studs if any

Colors & Materials

Paint

White Paint, Satin Finish

Light Gray, Satin Finish - Akzo Nobel SIGN 80432

Vinyl

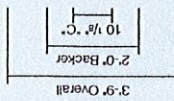
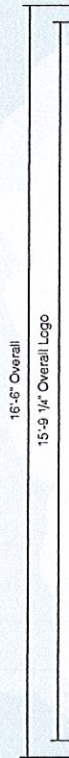
Blue, 3M 3630-36 (Stock)

Golden Yellow, 3M 3630-125 (Stock)

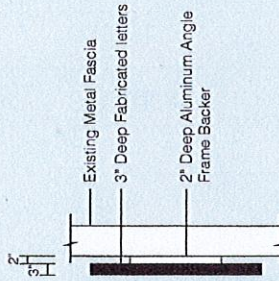
**PLANNING**

**MAR 01 2017**

**DEPARTMENT**



(A) Sign Elevation - Front View  
Scale: 1/4" = 1'-0"



(B) Sign Elevation - Side View  
Scale: 1/4" = 1'-0"



Luminaire Schedule		Description	
Symbol	Qty	Label	
	7	LW96-BR2-110-00	Lumateq LP96 90 Watt Wall Pack
Calculation Summary			
Label	CalcType	Units	
Parking lot	Illuminance	FC	
		Avg	3.78
		Max	13.0
		Min	0.4
		Avg/Min	9.45
		Max/Min	32.50

**COMMISSION NOTES:**

1. THE FOLLOWING LUMINAIRES ARE TO BE INSTALLED AT THE LOCATIONS SHOWN ON THE PLAN. THE LUMINAIRES ARE TO BE INSTALLED AT A HEIGHT OF 10 FEET ABOVE THE FINISHED GRADE.

2. THE LUMINAIRES ARE TO BE INSTALLED AT THE LOCATIONS SHOWN ON THE PLAN. THE LUMINAIRES ARE TO BE INSTALLED AT A HEIGHT OF 10 FEET ABOVE THE FINISHED GRADE.

3. THE LUMINAIRES ARE TO BE INSTALLED AT THE LOCATIONS SHOWN ON THE PLAN. THE LUMINAIRES ARE TO BE INSTALLED AT A HEIGHT OF 10 FEET ABOVE THE FINISHED GRADE.

4. THE LUMINAIRES ARE TO BE INSTALLED AT THE LOCATIONS SHOWN ON THE PLAN. THE LUMINAIRES ARE TO BE INSTALLED AT A HEIGHT OF 10 FEET ABOVE THE FINISHED GRADE.

5. THE LUMINAIRES ARE TO BE INSTALLED AT THE LOCATIONS SHOWN ON THE PLAN. THE LUMINAIRES ARE TO BE INSTALLED AT A HEIGHT OF 10 FEET ABOVE THE FINISHED GRADE.

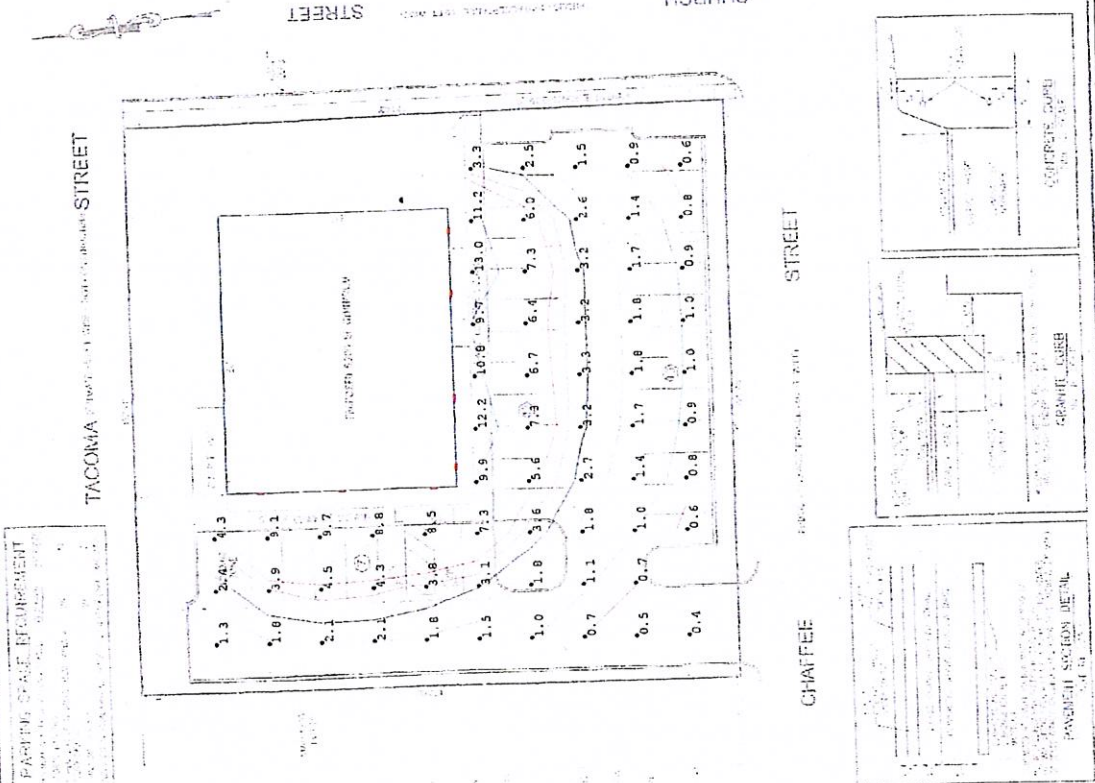
6. THE LUMINAIRES ARE TO BE INSTALLED AT THE LOCATIONS SHOWN ON THE PLAN. THE LUMINAIRES ARE TO BE INSTALLED AT A HEIGHT OF 10 FEET ABOVE THE FINISHED GRADE.

7. THE LUMINAIRES ARE TO BE INSTALLED AT THE LOCATIONS SHOWN ON THE PLAN. THE LUMINAIRES ARE TO BE INSTALLED AT A HEIGHT OF 10 FEET ABOVE THE FINISHED GRADE.

8. THE LUMINAIRES ARE TO BE INSTALLED AT THE LOCATIONS SHOWN ON THE PLAN. THE LUMINAIRES ARE TO BE INSTALLED AT A HEIGHT OF 10 FEET ABOVE THE FINISHED GRADE.

9. THE LUMINAIRES ARE TO BE INSTALLED AT THE LOCATIONS SHOWN ON THE PLAN. THE LUMINAIRES ARE TO BE INSTALLED AT A HEIGHT OF 10 FEET ABOVE THE FINISHED GRADE.

10. THE LUMINAIRES ARE TO BE INSTALLED AT THE LOCATIONS SHOWN ON THE PLAN. THE LUMINAIRES ARE TO BE INSTALLED AT A HEIGHT OF 10 FEET ABOVE THE FINISHED GRADE.



PLANNING  
MAR 01 2017  
DEPARTMENT

**LIGHTING LAYOUT & LANDSCAPE PLAN**  
XCEL BRAZILIAN JIU JITSU  
MAP 1500-1, FORMERLY LOTS 22, 41-44  
NEW BEDFORD, MASSACHUSETTS  
REDAINED LOT  
MARCIO SILVA  
DATE: JANUARY 23, 2017  
DESIGNED BY  
**Boucher & Heureux, Inc.**  
CML ENGINEERS & LAND SURVEYORS  
949 AMESBURY COMMON HUBWAY, SUITE 201  
WESTPORT, MASSACHUSETTS 02790  
Tel: (508) 655-5900 • Fax: (508) 655-5477  
www.bh-engineers.com