

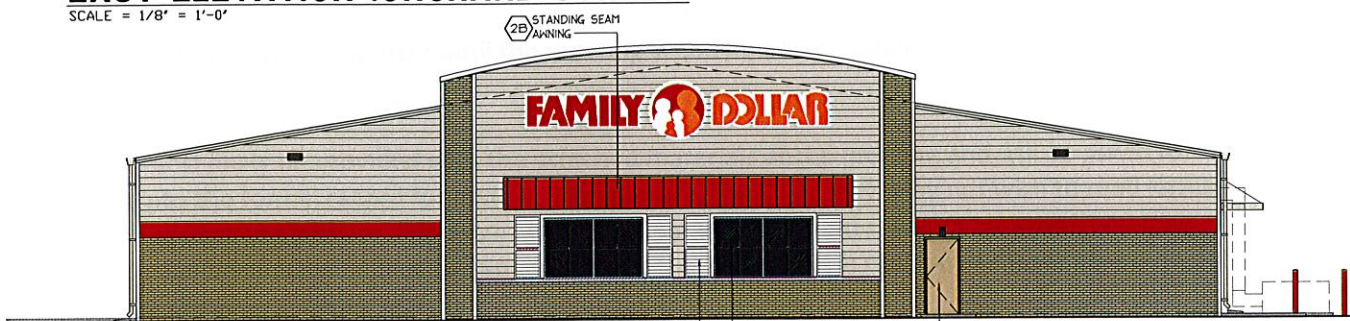
SOUTH ELEVATION (PARKING LOT)

SCALE = 1/4" = 1'-0"



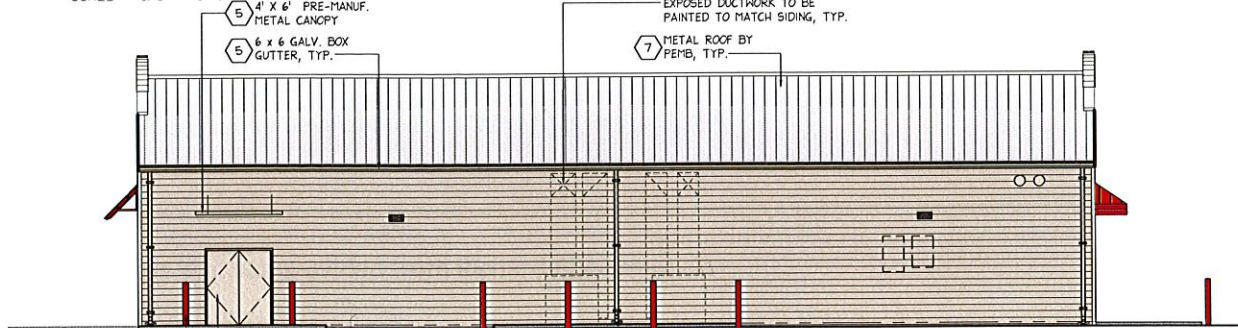
EAST ELEVATION (ORCHARD STREET)

SCALE = 1/8" = 1'-0"



NORTH ELEVATION (SWIFT STREET)

SCALE = 1/8" = 1'-0"



WEST ELEVATION (PARKING LOT/ADJ. PROPERTY)

SCALE = 1/8" = 1'-0"

EXTERIOR FINISH SCHEDULE

NO.	AREA	TYPE	COATS	COLOR
1	'NICHHA' FIBER CEMENT WALL PANEL OVER 5/8" CDX F.R. PLYWOOD SHEATHING	NICHHA - VINTAGE BRICK SERIES	PRE-FINISHED	VINTAGE BRICK SERIES COLOR 'WHITE WASH'
2	METAL CANOPY ROOF	VP - PANEL RIB NUCOR - CLASSIC WALL	PRE-FINISHED	MATCH VP COLOR 'COOL BRIGHT RED' OR BENJAMIN MOORE COLOR 'FD B1 SAFETY RED'
2A	SOFFIT PANELS	VP - PANEL RIB NUCOR - CLASSIC WALL	PRE-FINISHED	VP COLOR 'COOL ARCTIC WHITE' NUCOR COLOR 'POLAR WHITE' MATCH BENJAMIN MOORE COLOR 'FD B1 LIGHT SAND'
2B	METAL AWNING	VP - PANEL RIB NUCOR - CLASSIC WALL	PRE-FINISHED	MATCH VP COLOR 'COOL BRIGHT RED' OR MATCH BENJAMIN MOORE COLOR 'FD B1 SAFETY RED'
3	VINYL SIDING OVER 5/8" CDX F.R. PLYWOOD SHEATHING	CERTAINTED ENCORE DOUBLE 4" CLAPBOARD	PRE-FINISHED	CERTAINTED FINISH 'DESERT TAN'
4	TRIM BOARDS AT WINDOWS, CORNERS & WAINSCOT OVER 5/8" CDX F.R. PLYWOOD SHEATHING	CERTAINTED TRIM AND CORNER PRODUCTS	PRE-FINISHED	CERTAINTED FINISH 'COLONIAL WHITE'
5	ARCHED PARAPET	METAL BUILDING MANUFACTURER		WHITE
5A	GUTTERS, DOWNSPOUTS, MTL TRIM, RAKE TRIM, RECEIVING CANOPY, RECEIVING DOOR ONLY	METAL BUILDING MANUFACTURER	PRE-FINISHED	VP COLOR 'COOL EGYPTIAN WHITE' NUCOR COLOR 'LIGHTSTONE' MID-WEST COLOR 'ALMOND' MATCH BENJAMIN MOORE COLOR 'FD B1 LIGHT SAND'
5A	EGRESS DOOR ONLY	METAL BUILDING MANUFACTURER	PRE-FINISHED	BENJAMIN MOORE COLOR TO MATCH VINTAGE BRICK SERIES COLOR 'WHITE WASH'
6	STEEL BOLLARDS	EXTERIOR LATEX	2	BENJAMIN MOORE COLOR 'FD B1 SAFETY RED'
7	METAL ROOF	STANDING SEAM	PRE-FINISHED	COOL ARCTIC WHITE
8	METAL PANELS	MID-WEST - FBA PANEL NUCOR - ACCENT PANEL VP - VEE RIB PANEL	PRE-FINISHED	MID-WEST COLOR 'SADDLE TAN' NUCOR COLOR 'SAGEBRUSH TAN' VP COLOR 'TAN' BENJAMIN MOORE COLOR 'FD B1 DARK SAND'
9	'NICHHA' FIBER CEMENT WALL PANEL (RED BAND)	ILLUMINATIONS LARGE BLOCK (18"x24") PANEL	PRE-FINISHED	MATCH BENJAMIN MOORE COLOR 'FD B1 SAFETY RED'
10	METAL ACCENT TRIM	METAL BUILDING MANUFACTURER	PRE-FINISHED	FURNISHED BY METAL BUILDING MANUFACTURER; MATCH SHERWIN WILLIAMS SW 4081 'SAFETY RED'; SINGLE BEAD, EMBOSSED
11	FAUX SHUTTERS	TIMBERLANE FUNDAMENTAL LOUVER OR EQUAL	2	WHITE
12	SHADOW BOX FENCE AT MECHANICAL EQUIPMENT NOT SHOWN FOR CLARITY	PVC	PRE-FINISHED	MATCH BENJAMIN MOORE COLOR 'FD B1 LIGHT SAND'

NOTE:
ANNOTATION ON THE SOUTH ELEVATION INTENDS TO IDENTIFY COMMON, TYPICAL AND REPETITIVE ELEMENTS. ANNOTATIONS TYPICALLY WILL NOT REPEAT ON OTHER EXTERIOR ELEVATIONS. UNIQUE CONDITIONS WILL BE NOTED THROUGHOUT AS REQUIRED.

ALL DIMENSIONS SHOWN ARE TAKEN FROM SLAB HEIGHT, NOT SURROUNDING GRADE ELEVATION, TYPICAL.

REFER TO THE CIVIL ENGINEER'S SITE PLAN FOR SETBACK DIMENSIONS AND GRADING PLAN FOR ADJACENT GRADING INFORMATION.

☐ "REVIEWED"
☐ "DISAPPROVED - RESUBMIT"

All Site and Building Plan Requirements, including but limited to, all Interior Dimensions, Materials, Hardware, Equipment & Specifications, are to be designed and built per the Family Dollar Prototype Plan #_____ as indicated in the lease, unless a deviation is approved by Family Dollar's Plan Reviewer, next to each specific deviation. The initials indicate approval of only the one deviation being initiated. Any deviation from designated Prototype Plan that is not initiated by Family Dollar is disapproved and void.

(Approval to plan deviation will be indicated with the following circled initials: _____)

FWH Architects
LIC # AA 0003300
3336 Grand Blvd. Suite 201
Holiday, Florida 34690
Ph. 727. 815. 3336
Fax 727. 815. 3337

TO THE BEST OF THE KNOWLEDGE OF THE ARCHITECTS AND ENGINEERS, PLANS AND SPECIFICATIONS COMPLY WITH THE APPLICABLE MINIMUM BUILDING CODES AND THE APPLICABLE MINIMUM FIRE SAFETY STANDARDS

GUY F. FABER
MA License No. 31856

FAMILY DOLLAR
SW CORNER SWIFT ST. & ORCHARD ST.
BEDFORD, MASSACHUSETTS
PROJECT # 712332 PROTOTYPE #2016-01

11.03.16
date
16085
comm. no.

COLOR RENDERING
& EXT. FINISH
SCHEDULE

PLANNING
R2.0
JAN 2017
DEPARTMENT

Chg 38-16, 39-16 + 40-16