

Scale. 1" = 10'

DRAWN By: GARY K. LANGBEVIN  
(714) 328-1486 7-21-16

EUGENIA ST

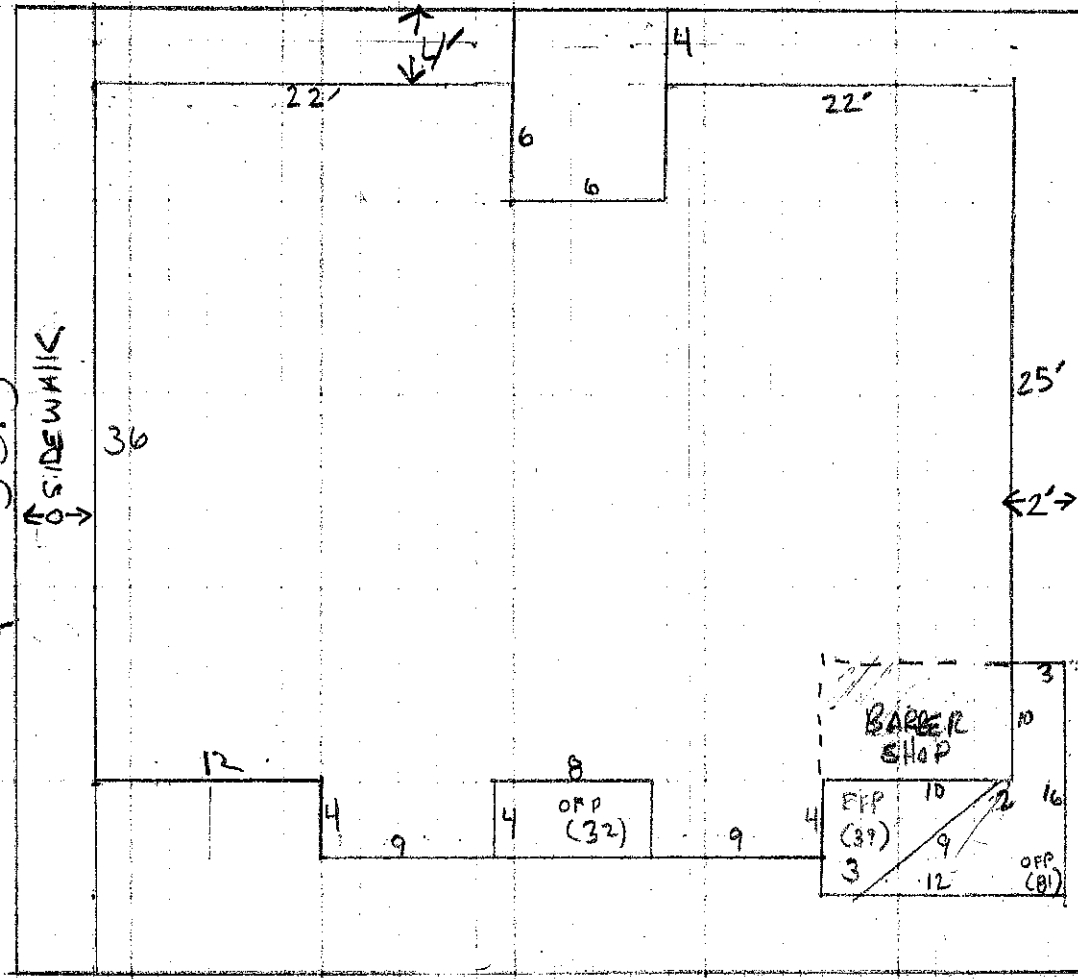
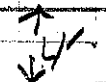


50.5'

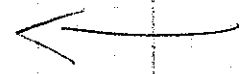
SIDEWALK

36

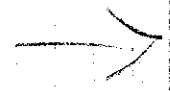
56.57'



56.57'



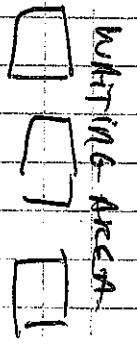
Ashley Blvd



401 ASHLEY BLVD  
3745A

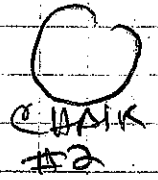
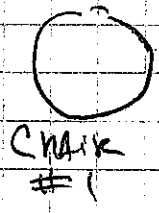
Entrance

11' 8"

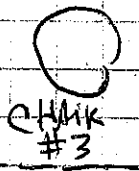
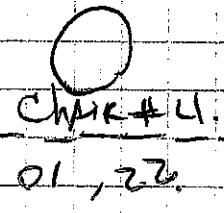


SINK

2' 1"



EXIT



EXIT