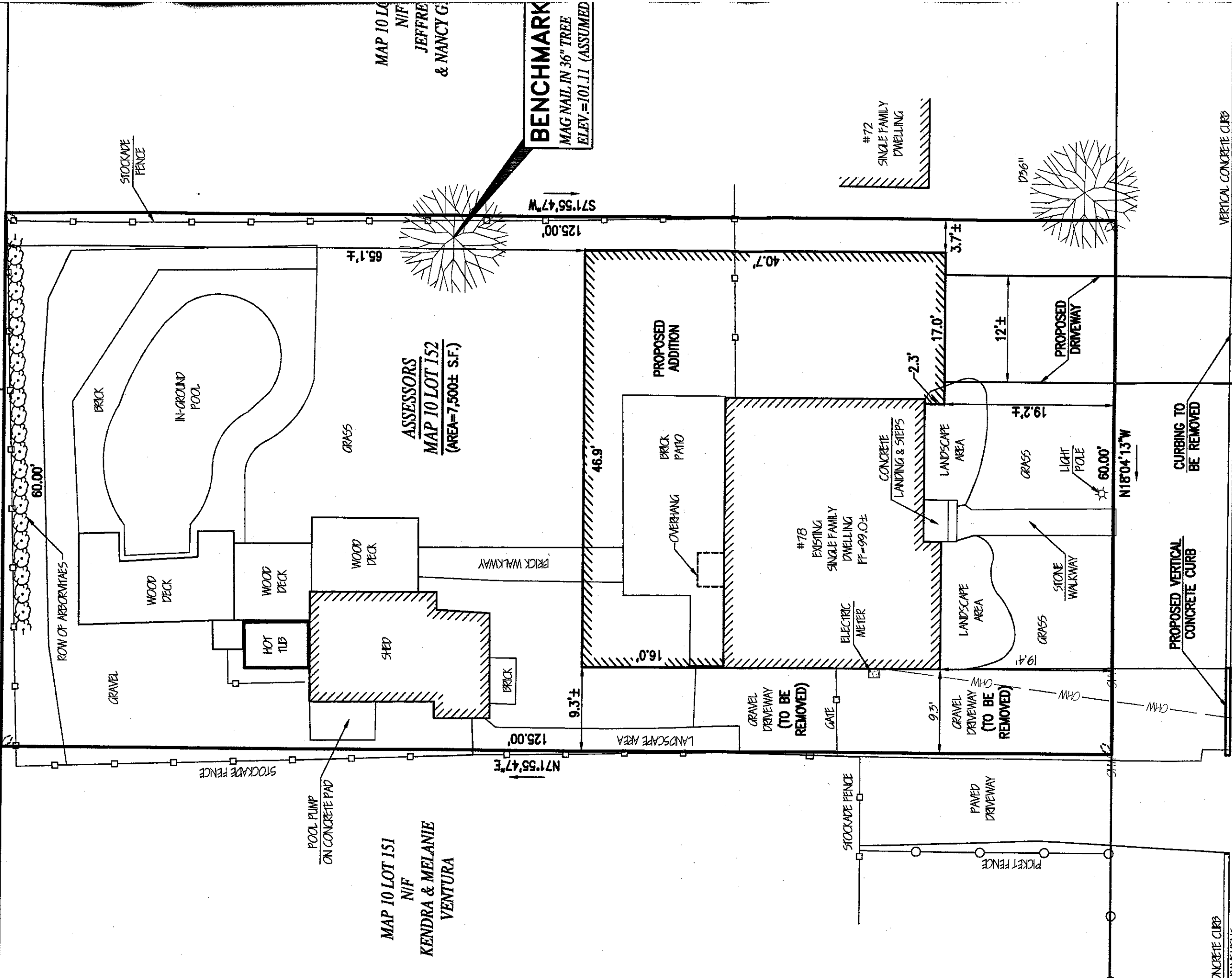


WILLIAM H. HORROCKS

ALFREDO & ANN VIEIRA

S18°04'13"E



MAP 10 LOT 151
N/F
KENDRA & MELANIE
VENTURA

ASSESSORS
MAP 10 LOT 152
(AREA=7,500± S.F.)

MAP 10 LOT 152
N/F
JEFFREY
& NANCY G.

BENCHMARK
MAG NAIL IN 36" TREE
ELEV. = 101.11 (ASSUMED)

BENCHMARK
MAG NAIL IN UTILITY POLE

MOSS ~PUBLIC - 50' WIDE~ STREET

VERTICAL CONCRETE CURB
EDGE OF PAVEMENT

PROPOSED VERTICAL
CONCRETE CURB

CURBING TO
BE REMOVED

CONCRETE CURB
PAVEMENT

#72
SINGLE FAMILY
DWELLING

#78
EXISTING
SINGLE FAMILY
DWELLING
FT=99.0±

PROPOSED
ADDITION

PROPOSED
DRIVEWAY

PAVED
DRIVEWAY

GRAVEL
DRIVEWAY
(TO BE
REMOVED)

GRAVEL
DRIVEWAY
(TO BE
REMOVED)

ELECTRIC
METER

CONCRETE
LANDING & STEPS

LANDSCAPE
AREA

GRASS

GRASS

LANDSCAPE
AREA

12'±

17.0'

3.7'±

125.00'

65.1'±

60.00'

125.00'

S71°55'47"W

N71°55'47"E

N18°04'13"W

S18°04'13"E

125.00'

65.1'±

40.7'

17.0'

3.7'±

12'±

19.2'±

60.00'

19.4'

9.5'

16.0'

46.9'

9.3'±

125.00'

60.00'

125.00'

S18°04'13"E

N71°55'47"E

S71°55'47"W

N18°04'13"W

S18°04'13"E

125.00'

65.1'±

40.7'

17.0'

3.7'±

12'±

19.2'±

60.00'

19.4'

9.5'

16.0'

46.9'

9.3'±

125.00'

60.00'

125.00'

S18°04'13"E

N71°55'47"E

S71°55'47"W

N18°04'13"W

S18°04'13"E

125.00'

65.1'±

40.7'

17.0'

3.7'±

12'±

19.2'±

60.00'

19.4'

9.5'

16.0'

46.9'

9.3'±

125.00'

60.00'

125.00'

S18°04'13"E

N71°55'47"E

S71°55'47"W

N18°04'13"W

S18°04'13"E

125.00'

65.1'±

40.7'

17.0'

3.7'±

12'±

19.2'±

60.00'

19.4'

9.5'

16.0'

46.9'

9.3'±

125.00'

60.00'

125.00'

S18°04'13"E

N71°55'47"E

S71°55'47"W

N18°04'13"W

S18°04'13"E

125.00'

65.1'±

40.7'

17.0'

3.7'±

12'±

19.2'±

60.00'

19.4'

9.5'

16.0'

46.9'

9.3'±

125.00'

60.00'

125.00'

S18°04'13"E

N71°55'47"E

S71°55'47"W

N18°04'13"W

S18°04'13"E

125.00'

65.1'±

40.7'

17.0'

3.7'±

12'±

19.2'±

60.00'

19.4'

9.5'

16.0'

46.9'

9.3'±

125.00'

60.00'

125.00'

S18°04'13"E

N71°55'47"E

S71°55'47"W

N18°04'13"W

S18°04'13"E

125.00'

65.1'±

40.7'

17.0'

3.7'±

12'±

19.2'±

60.00'

19.4'

9.5'

16.0'

46.9'

9.3'±

125.00'

60.00'

125.00'

S18°04'13"E

N71°55'47"E

S71°55'47"W

N18°04'13"W

S18°04'13"E

125.00'

65.1'±

40.7'

17.0'

3.7'±

12'±

19.2'±

60.00'

19.4'

9.5'

16.0'

46.9'

9.3'±

125.00'

60.00'

125.00'

S18°04'13"E

N71°55'47"E

S71°55'47"W

N18°04'13"W

S18°04'13"E

125.00'

65.1'±

40.7'

17.0'

3.7'±

12'±

19.2'±

60.00'

19.4'

9.5'

16.0'

46.9'

9.3'±

125.00'

60.00'

125.00'

S18°04'13"E

N71°55'47"E

S71°55'47"W

N18°04'13"W

S18°04'13"E

125.00'

65.1'±

40.7'

17.0'

3.7'±

12'±

19.2'±

60.00'

19.4'

9.5'

16.0'

46.9'

9.3'±

125.00'

60.00'

125.00'

S18°04'13"E

N71°55'47"E

S71°55'47"W

N18°04'13"W

S18°04'13"E

125.00'

65.1'±

40.7'

17.0'

3.7'±

12'±

19.2'±

60.00'

19.4'

9.5'

16.0'

46.9'

9.3'±

125.00'

60.00'

125.00'

S18°04'13"E

N71°55'47"E

S71°55'47"W

N18°04'13"W

S18°04'13"E

125.00'

65.1'±

40.7'

17.0'

3.7'±

12'±

19.2'±

60.00'

19.4'

9.5'

16.0'

46.9'

9.3'±

125.00'

60.00'

125.00'

S18°04'13"E

N71°55'47"E

S71°55'47"W

N18°04'13"W

S18°04'13"E

125.00'

65.1'±

40.7'

17.0'

3.7'±

12'±

19.2'±

60.00'

19.4'

9.5'

16.0'

46.9'

9.3'±

125.00'

60.00'

125.00'

S18°04'13"E

N71°55'47"E

S71°55'47"W

N18°04'13"W

S18°04'13"E

125.00'

65.1'±

40.7'

17.0'

3.7'±