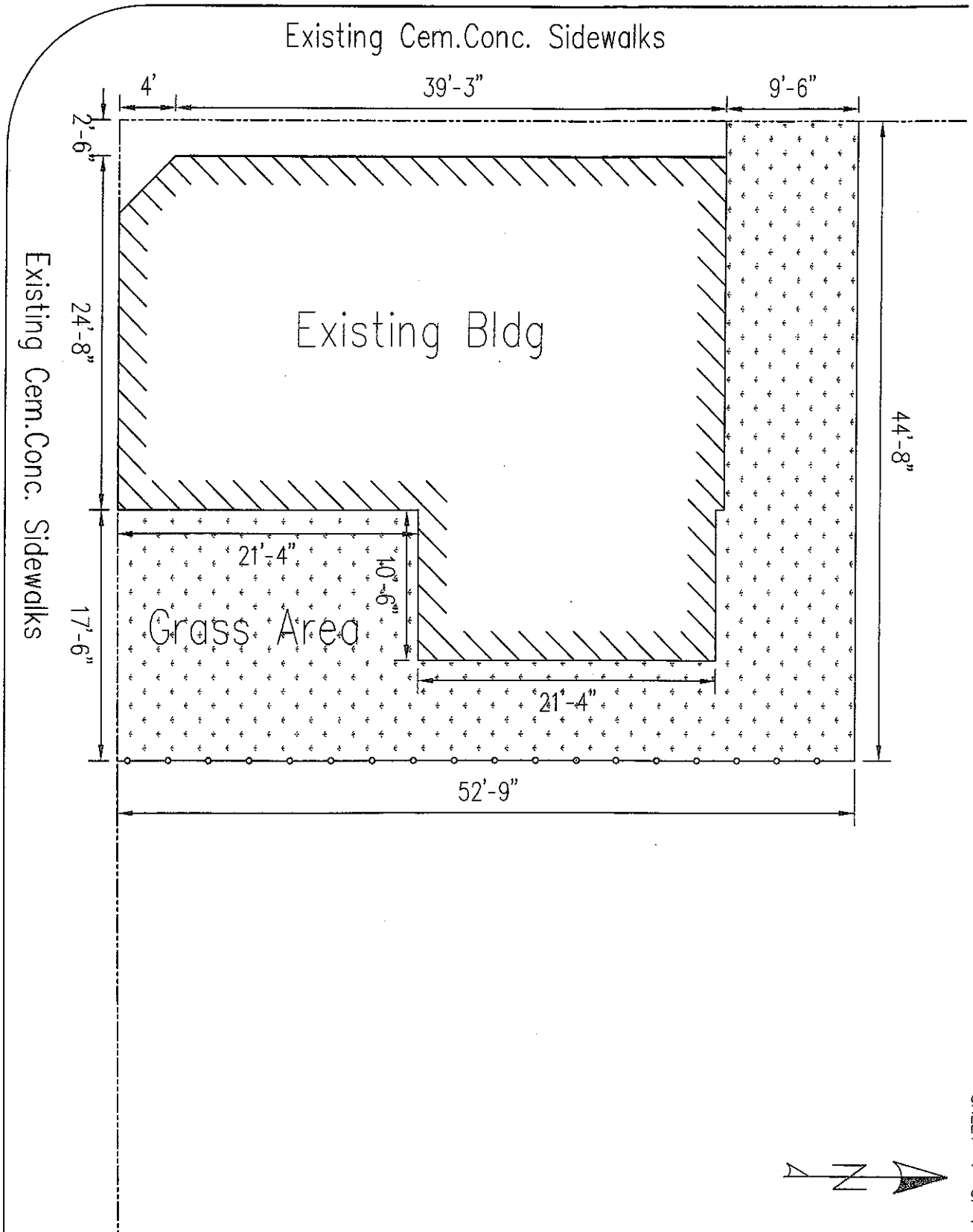


# COTTAGE ST

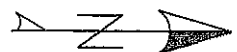


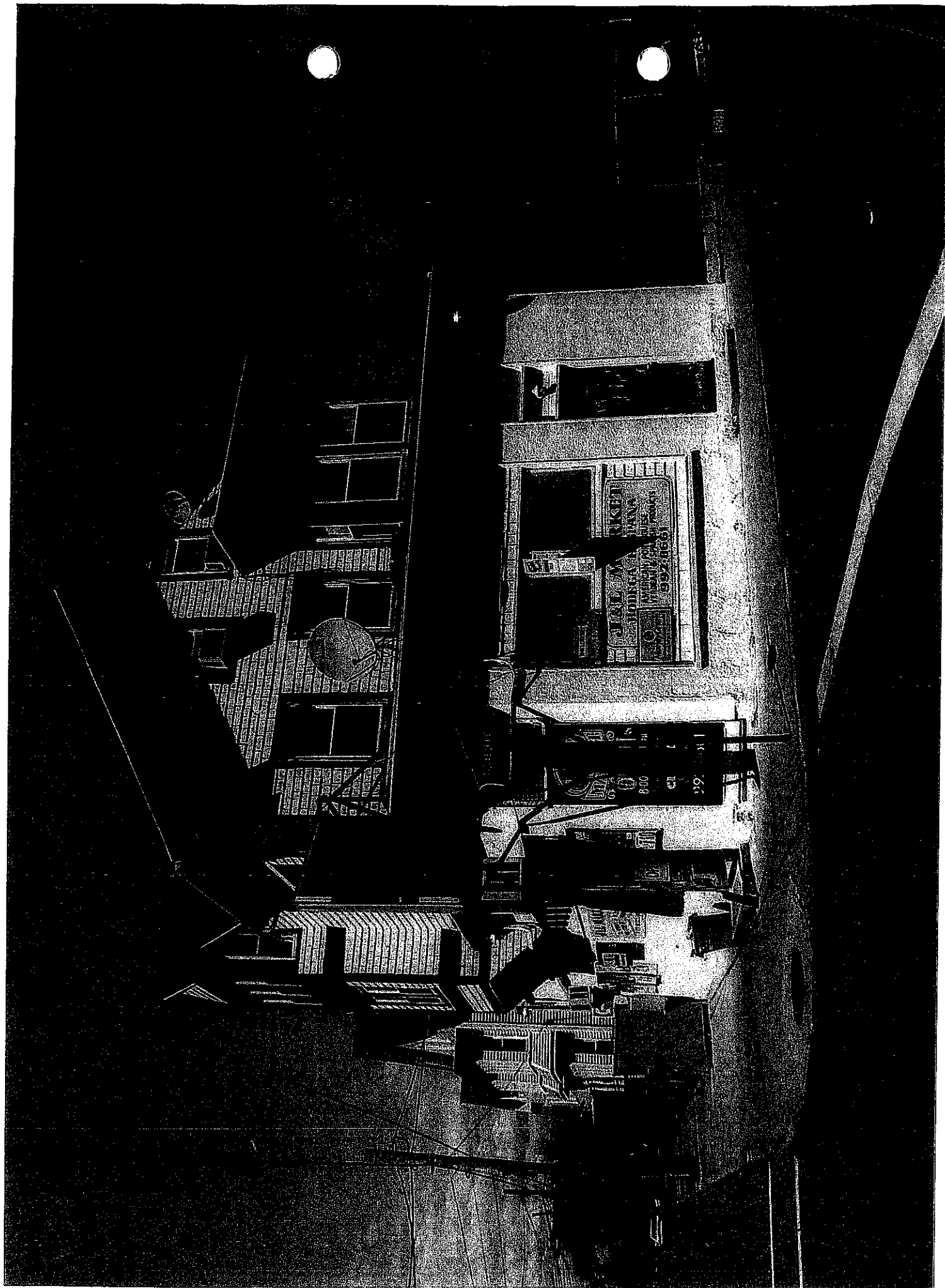
MAXFIELD ST

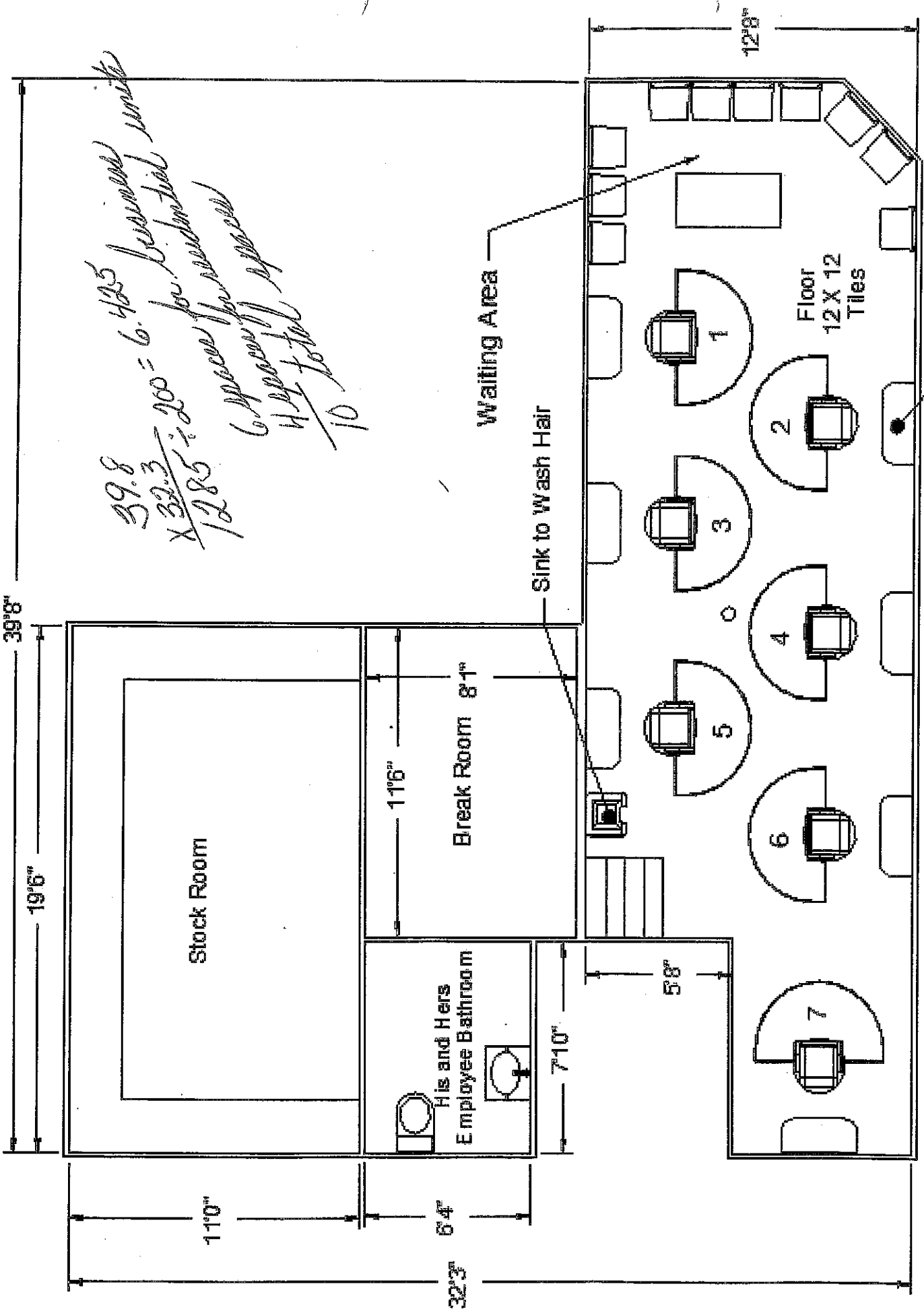
EXISTING SITE PLAN

245 MAXFIELD ST

SCALE: 1" = 10'  
DATE : January 2016







$39.8 \times 32.3 = 1285$   
 $1285 \div 200 = 6.425$   
 6 spaces for new units  
 $4 \frac{1}{2}$  total spaces  
 10

Waiting Area

Sink to Wash Hair

Break Room 8'1"

His and Hers Employee Bathroom 7'10"

Floor 12 X 12 Tiles

Mirror and station 7X

If approved, new plans will be made by code  
Will list all materials

