

YWCA Southeastern Massachusetts Zoning Board of Appeals Submission

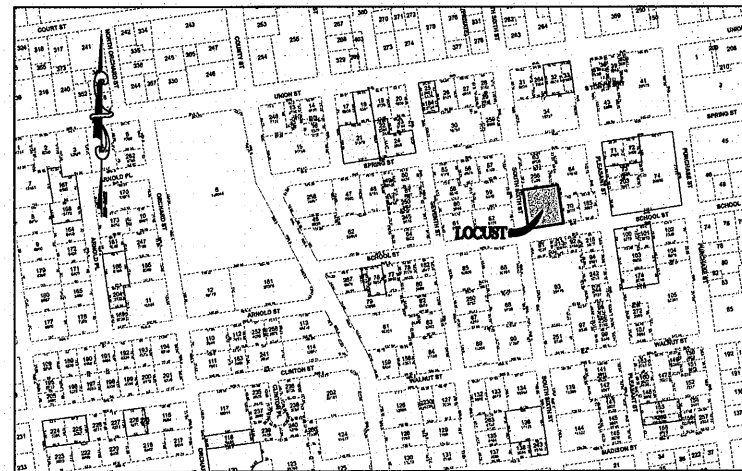
20 South Sixth Street
New Bedford, MA 02740

CITY CLERKS OFFICE
NEW BEDFORD, MA

2015 DEC 18 P 3:15

CITY CLERK

NOTES



SITE LOCUS
SCALE: 1"=250'

DRAWING LIST

- T1.01 COVER SHEET
- EXISTING CONDITIONS SITE PLAN
- C1.01 SITE CONSTRUCTION LAYOUT PLAN
- A100 GROUND FLOOR PLAN
- A101 FIRST FLOOR PLAN
- A200 ELEVATIONS

No.	REVISIONS/SUBMISSIONS	Date



**DAVIS
SQUARE**
ARCHITECTS

240A Elm St.
Somerville, MA 02144
617.628.5700
www.davissquarearchitects.com



GARCIA GALUSKA DESOUSA
INC.
CONSULTING ENGINEERS

370 Finance Center Road, Dartmouth, MA 02747-1571
508-688-5700 FAX 508-688-0883 E-MAIL: info@gg-gd.com

Project: RENOVATIONS TO
YWCA SOUTHEASTERN MA

Title: COVER SHEET

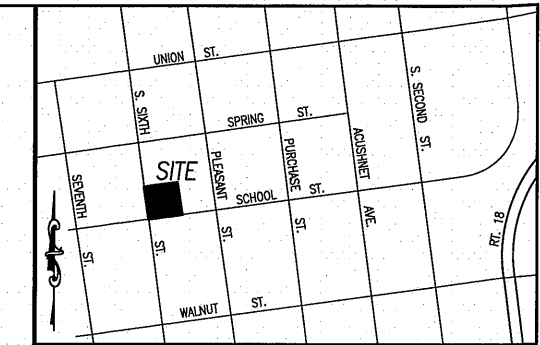
Designer: NCK	Drawing No.:
CMG	T1.01
Project No.:	
16002	
Scale:	
AS NOTED	
Date:	
12/18/2015	

Date: December 18, 2015

ZBA SUBMISSION

© Copyright 2015 Davis Square Architects, Inc. YWCA of Southeastern MA\7500100 YWCA of Southeastern MA\Drawings\CIVIL\T1.01 Cover Sheet - ZBA.dwg

LEGEND	
• DH SET	DRILL HOLE SET
+64.8	SPOT ELEVATION
TH=108.42	THRESHOLD ELEVATION
— UGC	UNDERGROUND COMMUNICATIONS
— UGE	UNDERGROUND ELECTRIC
— G	GAS MAIN
— W	WATER MAIN
— S	SEWER LINE
— D	DRAIN PIPE
○ UP	UTILITY POLE
○ GSO	GAS SHUT OFF
○ WSO	WATER SHUT OFF
○ EMH	ELECTRIC MAN HOLE
○ THH	TELEPHONE HAND HOLE
○ DMH	DRAIN MAN HOLE
○ MHC	MAN HOLE COVER
○ DS	DOWNSPOUT (TYP.)
⊙ LP	LAMP POST
□ EMTR	ELECTRIC METER
⊙ HYD	FIRE HYDRANT
⊙	SIGN (SEE DESCRIPTION)
⊙	TREE (TYPICAL)

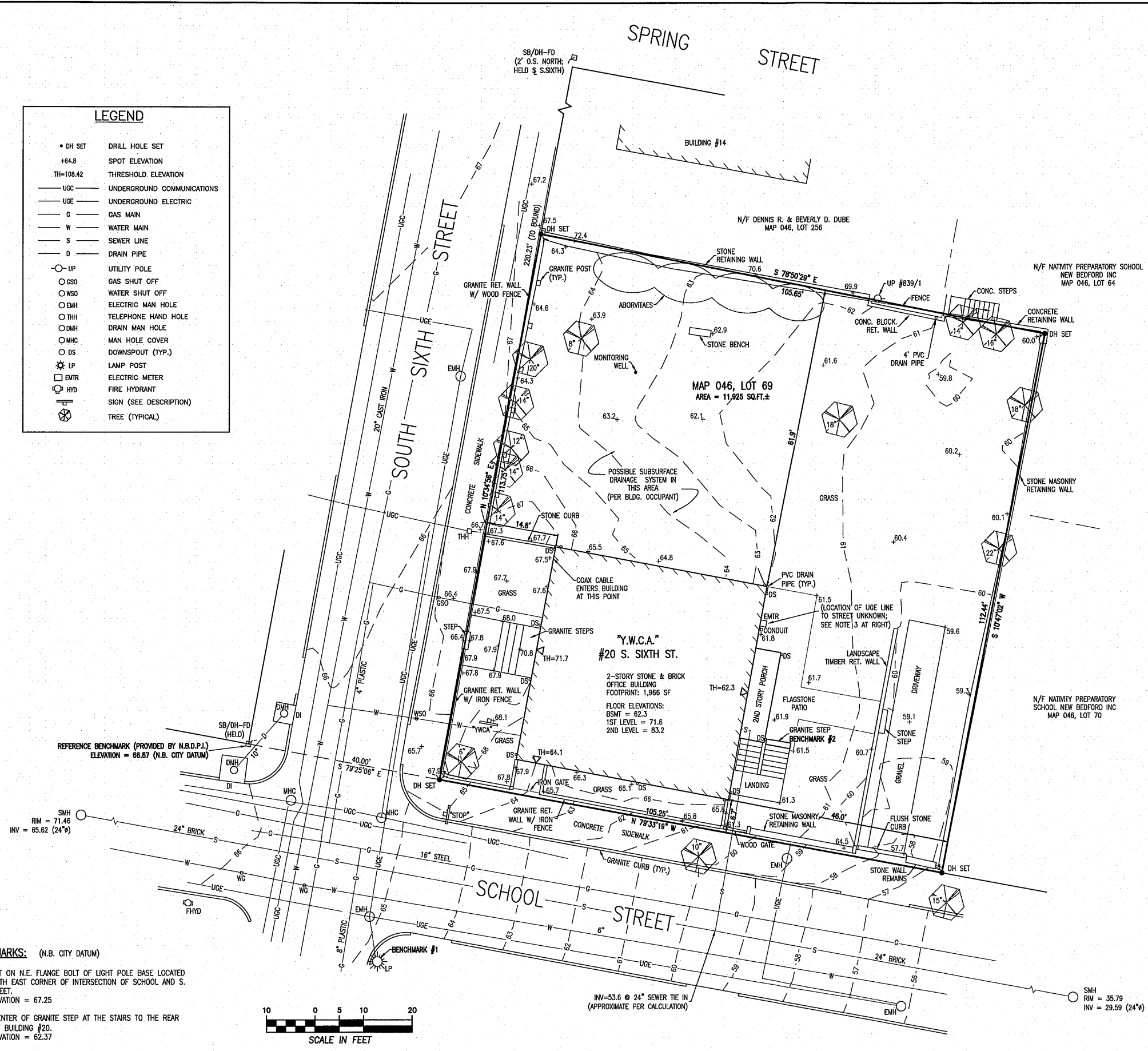


SITE LOCUS
N.T.S.



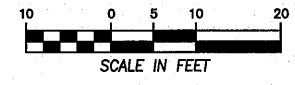
NOTES:

- BUILDING FOOTPRINT SHOWN REPRESENTS FIELD-LOCATED EXTERIOR CORNERS OF GRANITE AT GROUND LEVEL. CALCULATED SETBACKS SHOWN ARE FROM BUILDING FOOTPRINT TO SURVEYED LOT BOUNDARY.
- UTILITY LOCATIONS SHOWN ARE COMPILED FROM FIELD LOCATIONS OF VISIBLE APPURTENANCES, PAINT MARKINGS, AND PLANS PROVIDED BY N.B.D.P.I. AND EVERSOURCE ELECTRIC. LINES INDICATE APPROXIMATE CENTER OF LOCATED AND/OR SCALED FEATURES.
- SEE EASEMENT FOR ELECTRIC SERVICE, D. BK. 10371, PG. 154.
- THE LOCATION OF 8" & 4" PLASTIC GAS LINES IN SOUTH SIXTH STREET AS SHOWN ARE BASED ON INFORMATION PROVIDED BY AN EVERSOURCE CREW ON SITE DURING INSTALLATION OF SAID GAS LINES ON 11/12/15



BENCHMARKS: (N.B. CITY DATUM)

- "X" CUT ON N.E. FLANGE BOLT OF LIGHT POLE BASE LOCATED NEAR SOUTH EAST CORNER OF INTERSECTION OF SCHOOL AND S. SIXTH STREET.
ELEVATION = 67.25
- TOP CENTER OF GRANITE STEP AT THE STAIRS TO THE REAR PORCH OF BUILDING #20.
ELEVATION = 62.37



EXISTING CONDITIONS
SITE PLAN


20 SOUTH SIXTH STREET
NEW BEDFORD, MASSACHUSETTS

PREPARED FOR
YWCA OF SOUTHEASTERN MA, INC.
SCALE: 1"=10' DATE: NOVEMBER 12, 2015
REVISED THROUGH: NOVEMBER 20, 2015


PREPARED BY
Boucher & Heureux, Inc.
CIVIL ENGINEERS / LAND SURVEYORS
648 AMERICAN LEGION HIGHWAY, SUITE ONE
WESTPORT, MASSACHUSETTS 02790
tel. (508) 636-5905 - fax. (508) 636-2477
COPYRIGHT © 2015 BOUCHER & HEUREUX, INC.

NOTES

No.	REVISIONS/SUBMISSIONS	Date



DAVIS SQUARE ARCHITECTS
240A Elm St., Somerville, MA 02144
617.628.5700
www.davisquarearchitects.com



GARCIA GALUSKA DESOUSA
CONSULTING ENGINEERS INC.
370 Fenwick Corner Road, Dartmouth, MA 01928
508-699-5700 FAX 508-999-0383 E-MAIL info@g-g-c.com

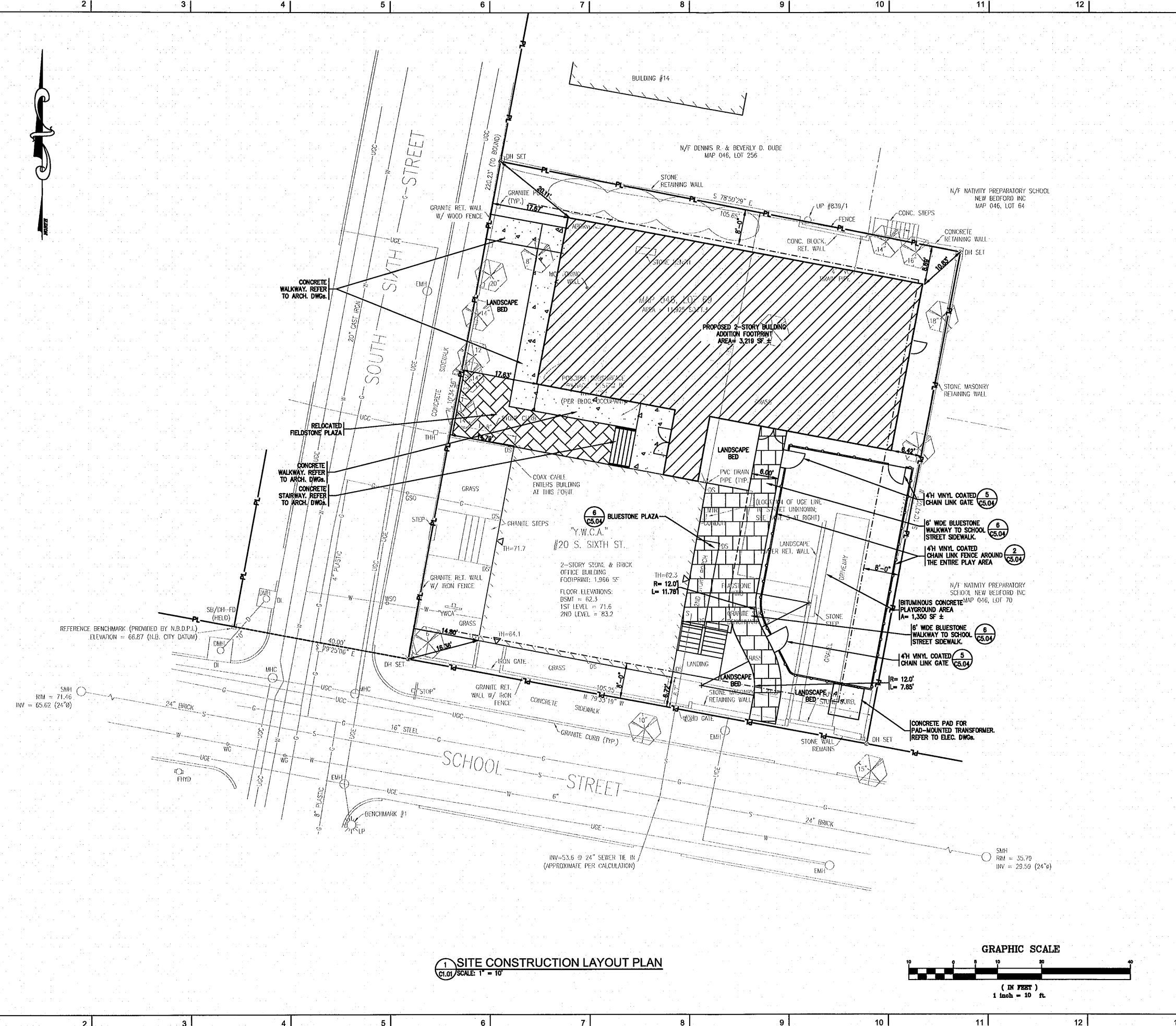
Project **RENOVATIONS TO YWCA SOUTHEASTERN MA**

Title **SITE CONSTRUCTION LAYOUT PLAN**

Design: NCK
CMG
Project No: 16002
Scale: AS NOTED
Date: 12/18/2015

Drawing No: **C1.01**

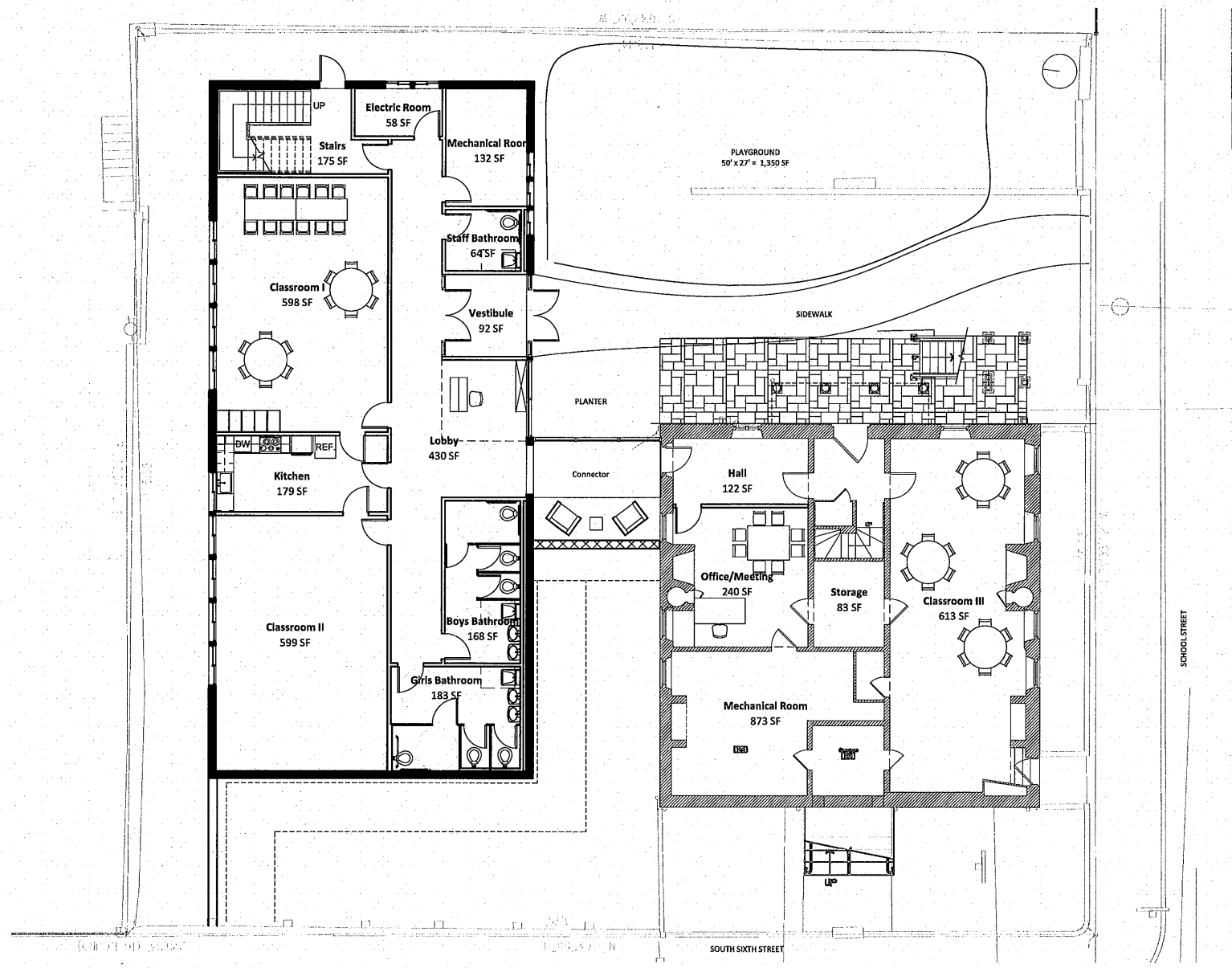
ZBA SUBMISSION



© Copyright 2015 Davis Square Architects, Inc. M:\YWCA of Southeastern MA\2560100 YWCA of Southeastern MA\Drawings\Civil\C1.01 Site Construction Layout Plan.dwg

NOTES

DO NOT SCALE DRAWINGS.



No.	REVISIONS/SUBMISSIONS	Date

DAVIS SQUARE ARCHITECTS
 240A Elm St.
 Somerville, MA 02144
 617.628.5700
 www.davisquarearchitects.com

Consultant

Project: RENOVATIONS TO
YWCA SOUTHEASTERN MA
 Enter address here

Title: **GROUND FLOOR PLAN**

Design: [Signature]	Drawing No.
Check: [Signature]	A100
Author: [Signature]	
Project No. 16002	
Scale 1/8" = 1'-0"	
Date 12/18/2015	

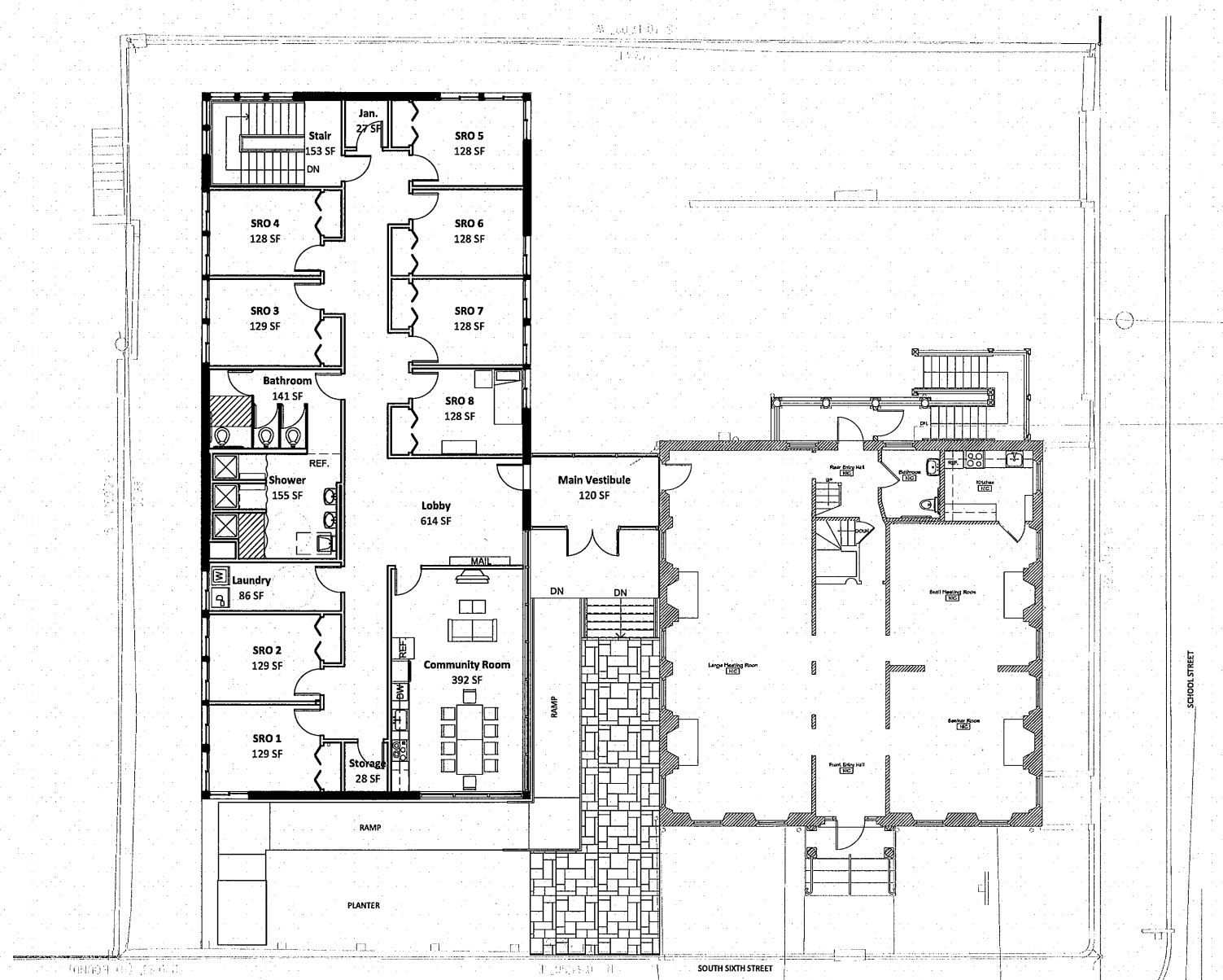
ZBA SUBMISSION

A-1 GROUND FLOOR PLAN

1/8" = 1'-0"

NOTES

DO NOT SCALE DRAWINGS.



No.	REVISIONS/SUBMISSIONS	Date

DAVIS SQUARE ARCHITECTS
 240A Elm St.,
 Somerville, MA 02144
 617.628.5700
 www.davissquarearchitects.com

Consultant

Project: RENOVATIONS TO
YWCA SOUTHEASTERN MA
 Enter address here

Title: **FIRST FLOOR PLAN**

Design	Author	Drawing No. A101
Checked	Project No. 16002	
Scale	1/8" = 1'-0"	
Date	12/18/2015	

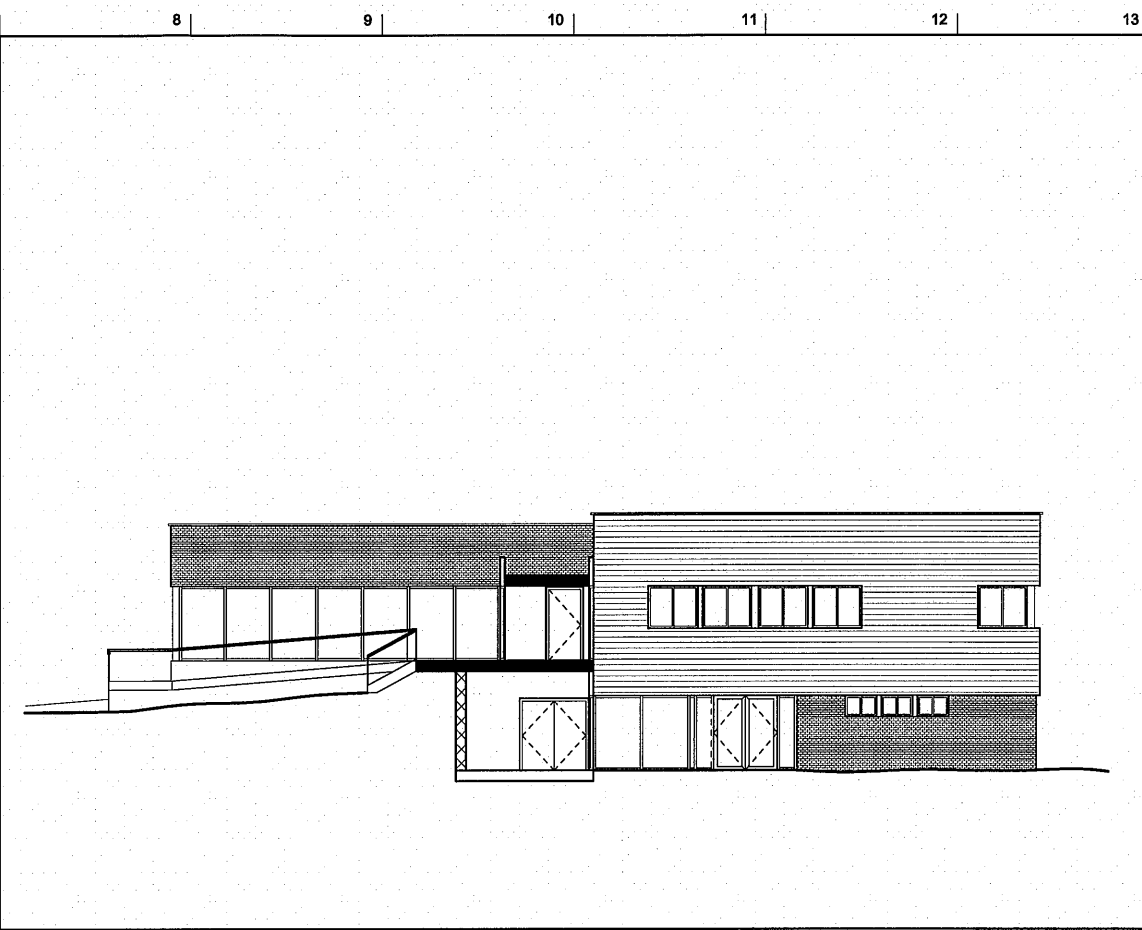
A-1 FIRST FLOOR PLAN
 1/8" = 1'-0"

ZBA SUBMISSION

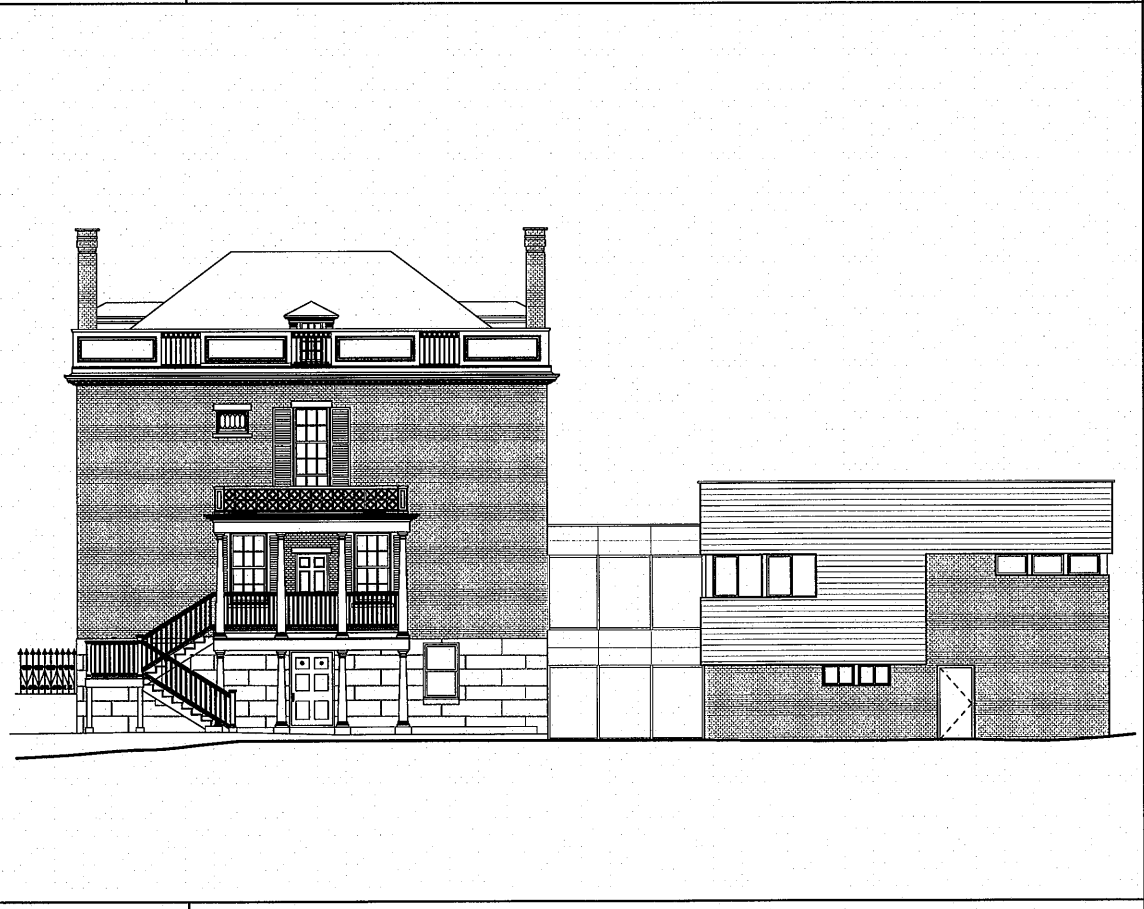
1
M
L
K
J
H
G
F
E
D
C
B
A



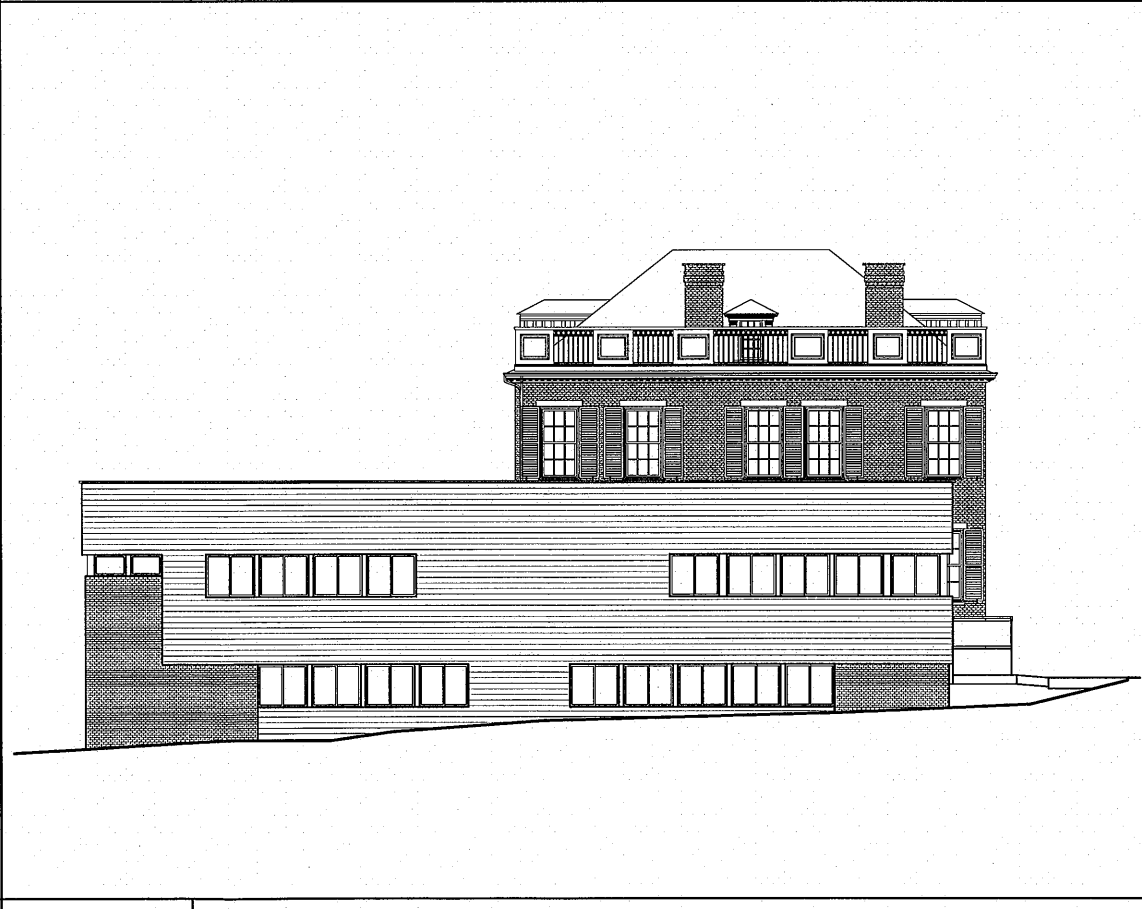
G-1 WEST ELEVATION / SOUTH SIXTH STREET
1/8" = 1'-0"



G-7 SOUTH ELEVATION / SCHOOL STREET
1/8" = 1'-0"



A-1 EAST ELEVATION / REAR
1/8" = 1'-0"



A-7 NORTH ELEVATION
1/8" = 1'-0"

NOTES

DO NOT SCALE DRAWINGS.

No.	REVISIONS/SUBMISSIONS	Date



**DAVIS
SQUARE
ARCHITECTS**
240A Elm St.,
Somerville, MA 02144
617.628.5700
www.davissquarearchitects.com

Consultant

Project **RENOVATIONS TO
YWCA SOUTHEASTERN MA**

Title **ELEVATIONS**

Designed	Drawing No.
Project No. 16002	A200
Scale 1/8" = 1'-0"	
Date 12/18/2015	

ZBA SUBMISSION

© Copyright 2015 Davis Square Architects, Inc.
G:\1616002 - YWCA Southeastern MA\YWCA-Drawings\ZBA_A200.dwg