

A
C 1.1 SITE PLAN
 SCALE: 1" = 10'-0"

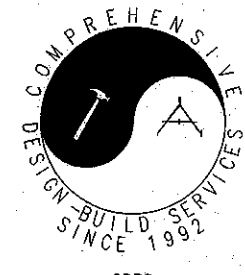
the property of Comprehensive Design/Build Services. No part thereof shall be copied, disclosed to others, or used in connection with any work or project, without the prior written consent of Comprehensive Design/Build Services. Comprehensive Design/Build Services shall not be responsible for construction means, methods, techniques, or procedures utilized by the contractors, nor for the liability for this plan is limited to the extent of its fee less third party costs.

Project
**PROPOSED
 DUPLEX
 FOR**

Drawing Title
Site Plan

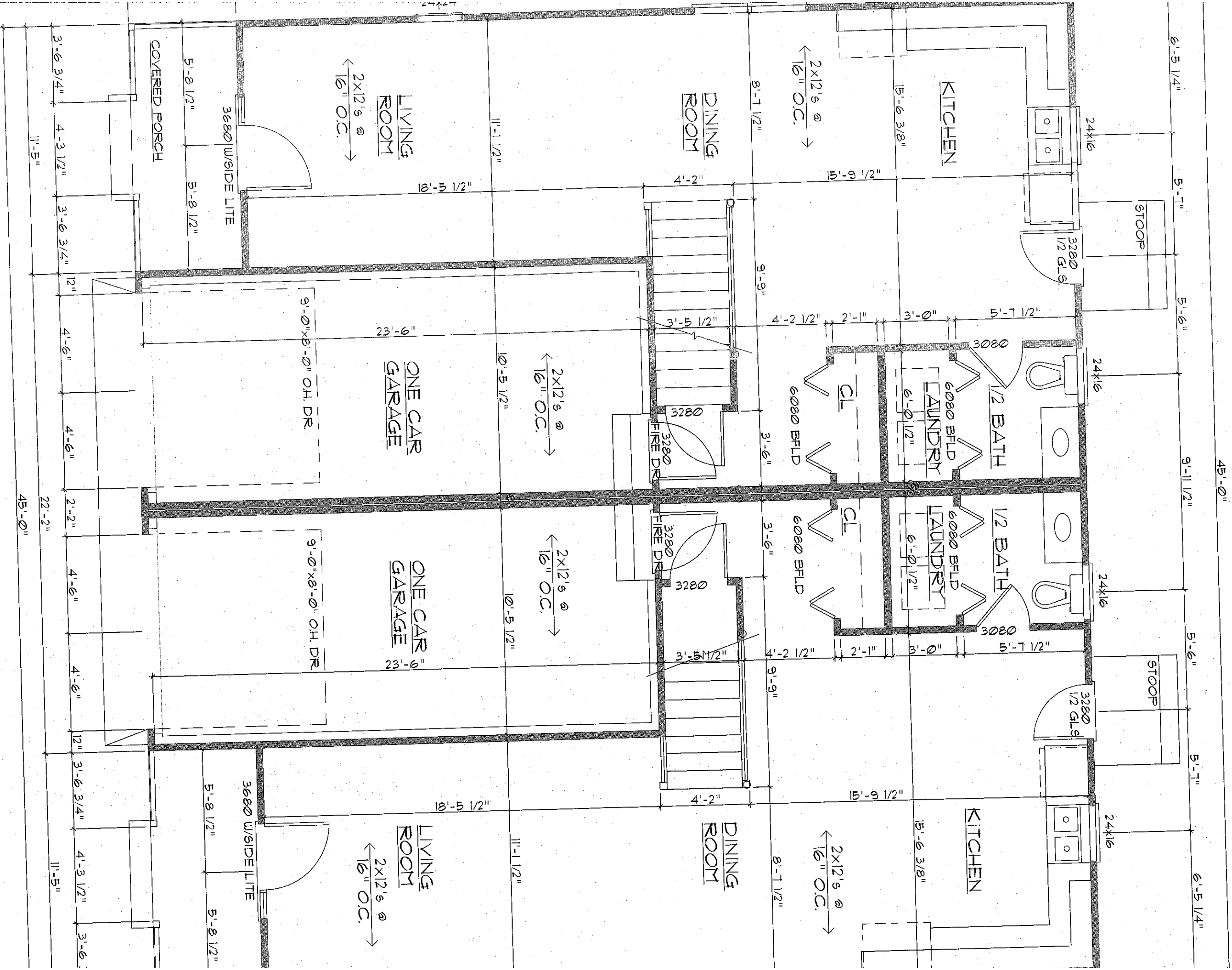
Date 4.18.2006
 Scale AS SHOWN
 Drawing No.
C1.1

No.	Date	Revision
△		
△		
△		
△		
△		
△		

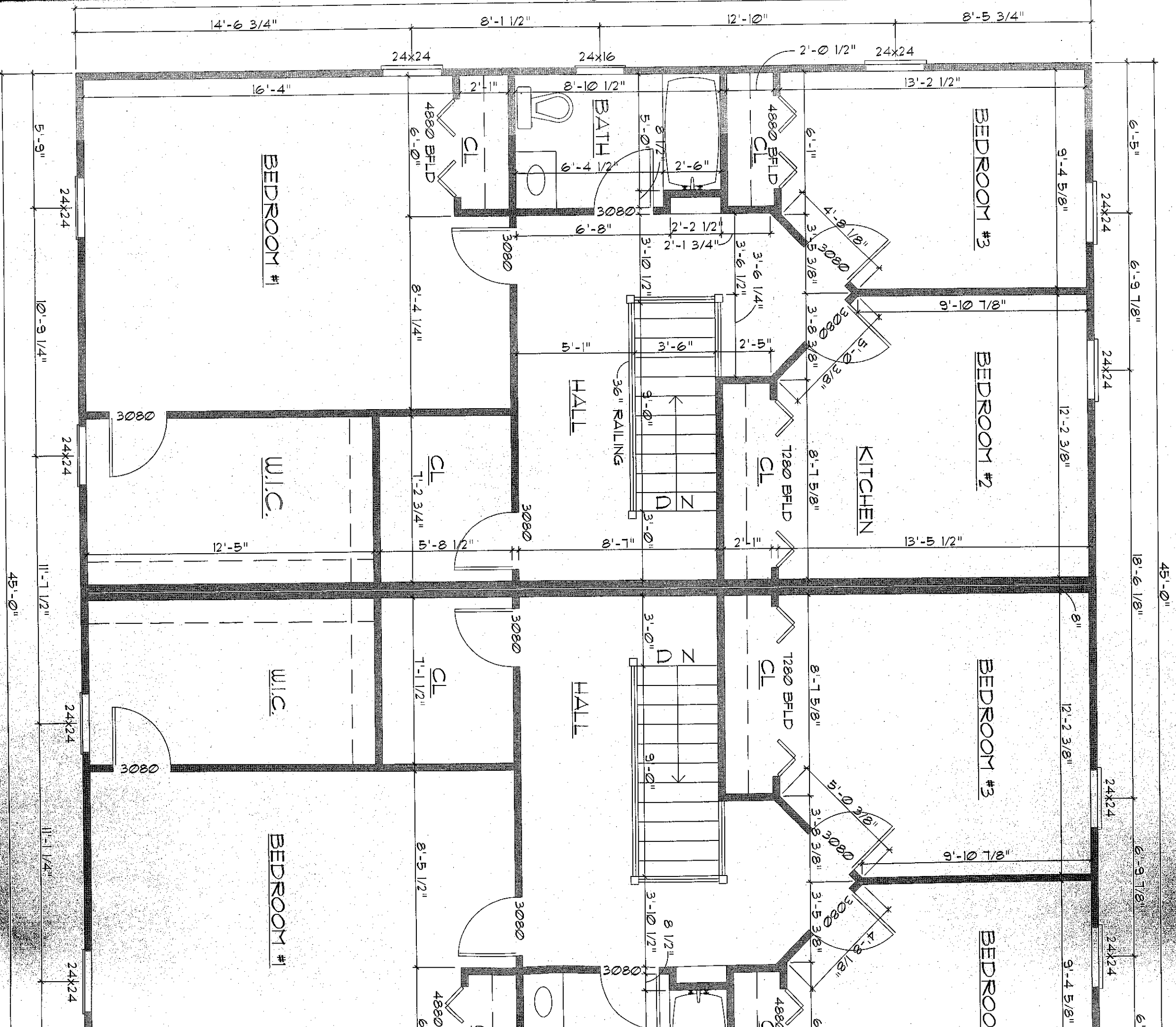


Description
 Approved
 Approved as Noted
 Date

Note:
 All ideas, designs, and specifications are the property of the designer and shall remain the property of the designer. No part of this design or any part thereof shall be reproduced, stored in a retrieval system, or transmitted in any form or by any means, electronic, mechanical, photocopying, recording, or by any information storage and retrieval system, without the prior written permission of the designer.



Comprehensive Design/Build Services. All RIGHTS RESERVED. The plans, drawings, designs, specifications and other arrangements on this sheet are and shall remain the property of Comprehensive Design/Build Services. The plans, drawings, designs, specifications and other arrangements on this sheet are and shall remain the property of Comprehensive Design/Build Services. Comprehensive Design/Build Services shall not be held liable for any errors, omissions, or for the failure of the contractor to carry out the work in accordance with the contract documents. Comprehensive Design/Build Services shall not be held liable for any errors, omissions, or for the failure of the contractor to carry out the work in accordance with the contract documents.



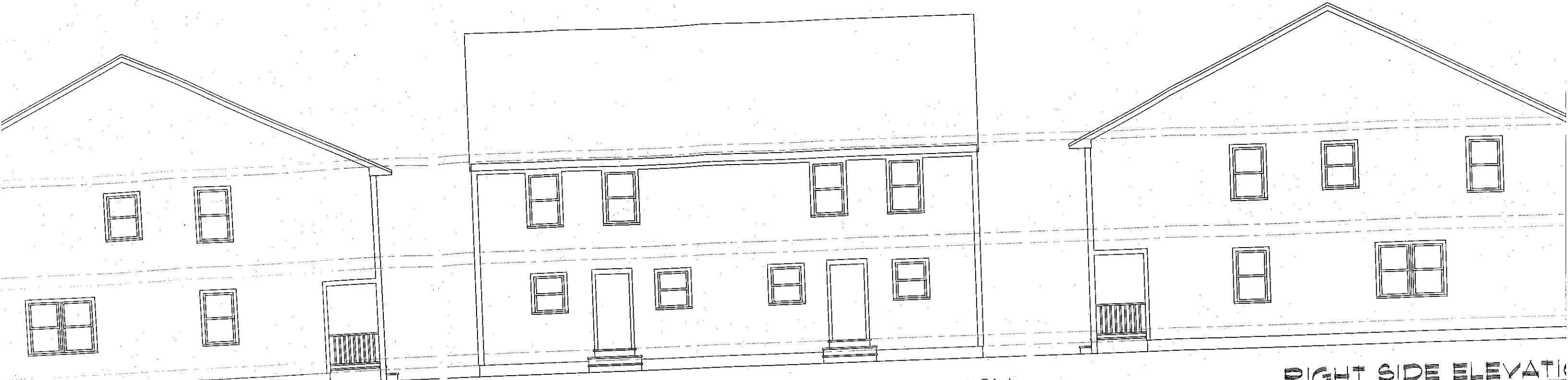
RESERVED. The plans, drawings, designs, specifications and other arrangements on this sheet are and shall remain the property of Comprehensive Design/Build Services. No part thereof shall be reproduced, stored in a retrieval system, or transmitted in any form or by any means, electronic, mechanical, photocopying, recording, or by any information storage and retrieval system, without the express knowledge and written consent of Comprehensive Design/Build Services. Comprehensive Design/Build Services shall not be responsible for construction means and methods, or for any conditions that may arise during construction, unless specifically stated otherwise. The contractor shall be responsible for obtaining all necessary permits and for carrying out the work in accordance with the contract documents. Comprehensive Design/Build Services' liability for this plan is limited to the extent of its fee. (See liquidated damages clause in contract documents.)



FRONT ELEVATION
 SCALE: 1/4" = 1'-0"

FRONT ELEVATION

SCALE: 1/4" = 1'-0"



LEFT SIDE ELEVATION

SCALE: 1/8" = 1'-0"

REAR ELEVATION

SCALE: 1/8" = 1'-0"

RIGHT SIDE ELEVATION

SCALE: 1/8" = 1'-0"

Comprehensive Design/Build Services. ALL RIGHTS RESERVED. The plans, drawings, designs, specifications and other arrangements on this sheet are and shall remain the property of Comprehensive Design/Build Services. Comprehensive Design/Build Services shall not be responsible for construction means, methods, techniques, or procedures utilized by the contractors, no matter how experienced, or for the failure of the contractor to carry out the work in accordance with the contract documents. Comprehensive Design/Build Services liability for this plan is limited to the extent of its fee less third party costs. No part thereof shall be copied, disclosed to others, or used in connection with any work.