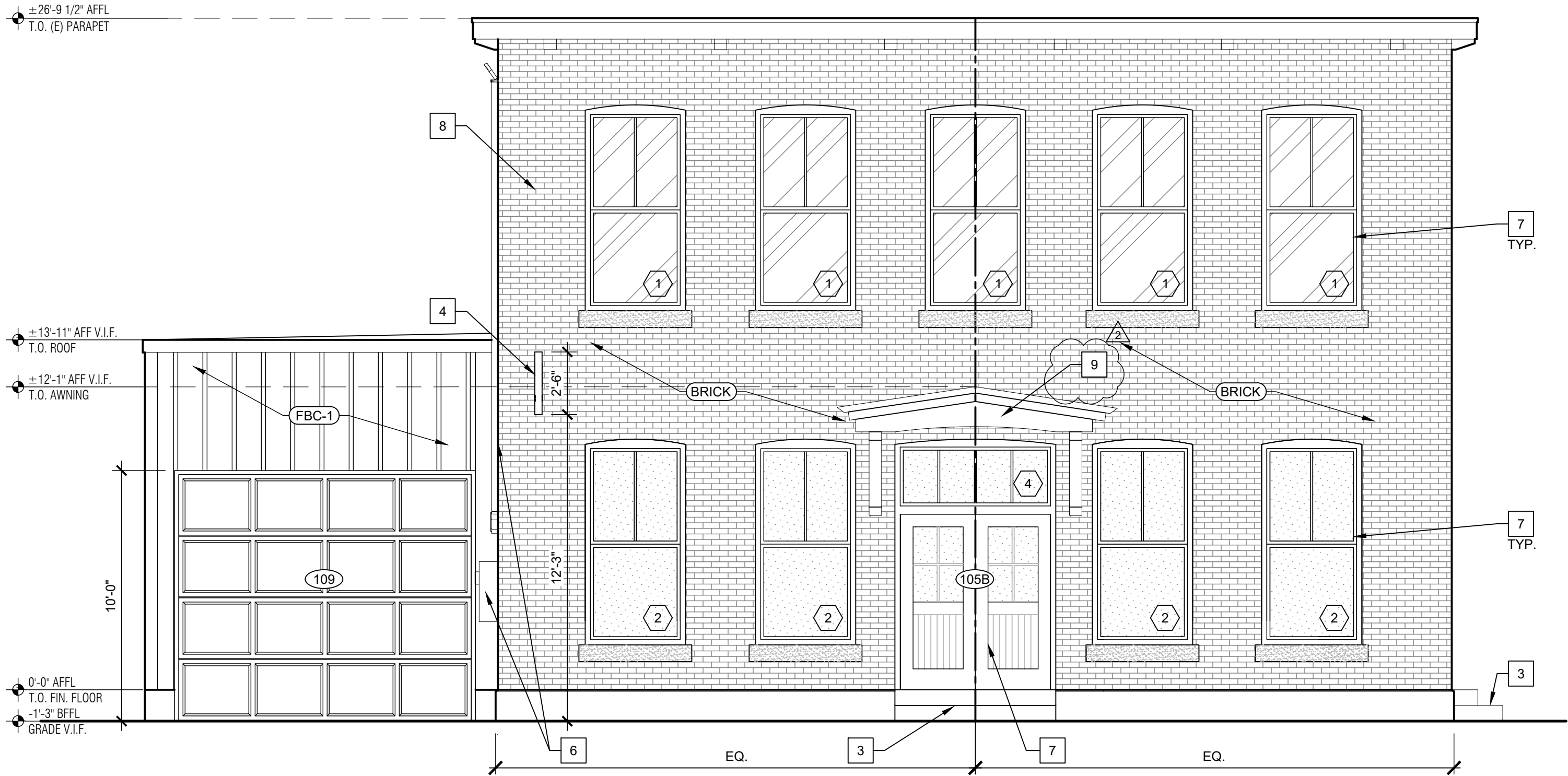


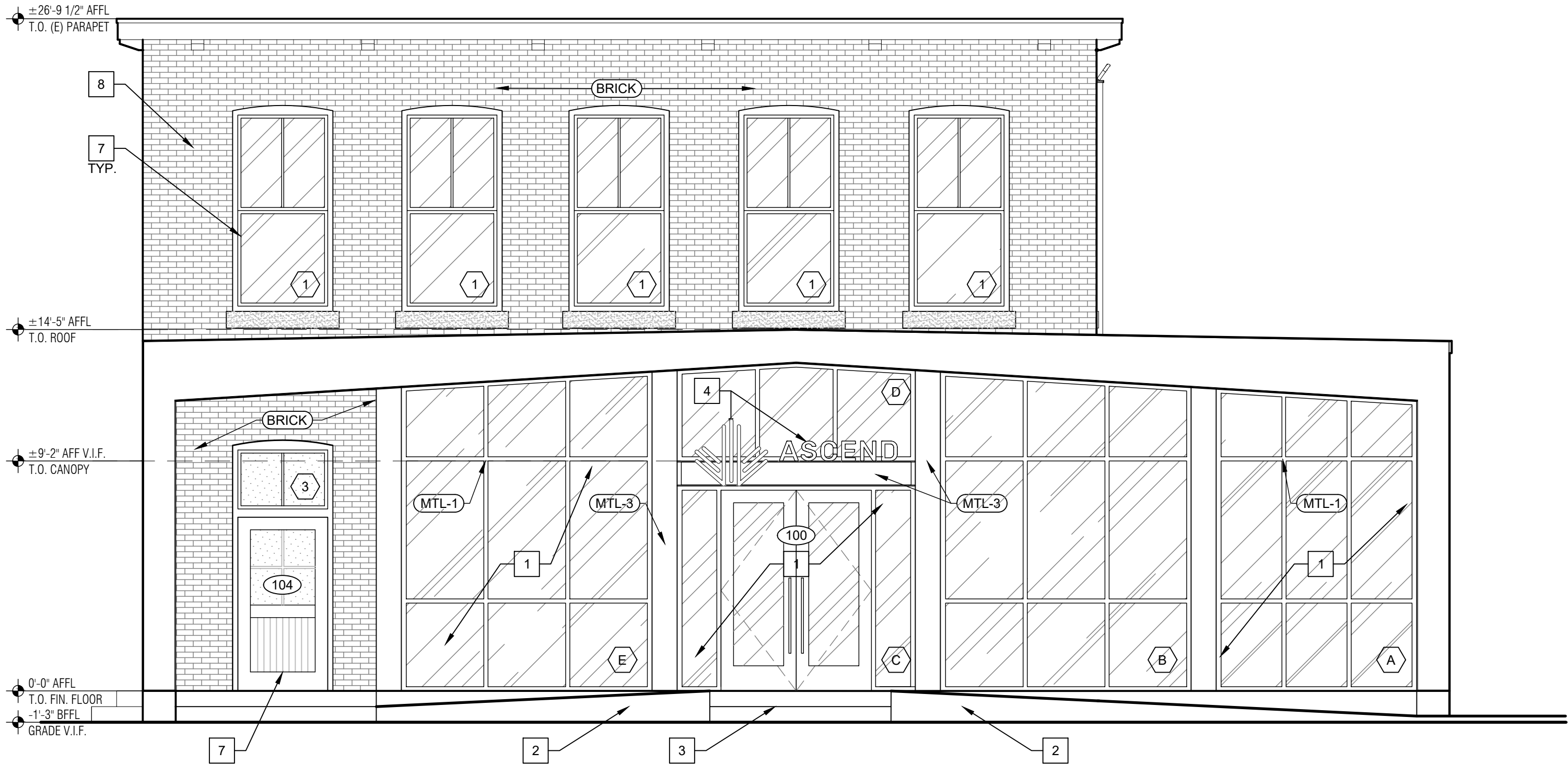
FINISH SPECIFICATIONS								
TAG	MATERIAL	MANUF.	DESCRIPTION	COLOR/FINISH	SIZE	INSTALLATION	LOCATION	REMARKS
STOREFRONT								
GL-1	CLEAR INSULATED GLASS	STOREFRONT VENDOR	TEMPERED	CLEAR	1" INSULATED ASSEMBLY	KAWNEER SYSTEM	STOREFRONT SYSTEM	REFER TO AND COORD. W/ WINDOW SCHEDULE FOR ADDITIONAL INFORMATION
GL-2	LAMINATED FROSTED GLASS	STOREFRONT VENDOR	LOW - IRON TEMPERED	FROSTED	1/2" THICK			REFER TO AND COORD. W/ WINDOW SCHEDULE FOR ADDITIONAL INFORMATION
GL-3	LAMINATED CLEAR GLASS	SF VENDOR OR G.C.	LOW - IRON TEMPERED	EXTRA-CLEAR	1/2" THICK			REFER TO AND COORD. W/ WINDOW SCHEDULE FOR ADDITIONAL INFORMATION
PT-5	EXTERIOR PAINT	BENJAMIN MOORE	REGAL EXTERIOR MOORLIFE	TBD / TBD			EXPOSED EXTERIOR ELEMENTS	
PT-6	EXTERIOR PAINT	BENJAMIN MOORE	REGAL EXTERIOR MOORLIFE	TBD / TBD			EXTERIOR	
MTL-1	ALUMINUM STOREFRONT SYSTEM	KAWNEER	TRIFAB 451T FRAMING SYSTEM	TBD	2" PROFILE, 4 1/2" DEPTH		REAR STOREFRONT	
FBC-1	FIBER CEMENT BOARD/ BATTEN / JAMES HARDIE / SMOOTH BOARD	TBD	TBD	BLACK POWDER COAT				
MTL-3	STEEL	TBD	TBD	BLACK POWDER COAT	CUSTOM			

GENERAL NOTES	
NOTE: REFER TO DOOR AND WINDOW SCHEDULE FOR ALL DOORS AND STOREFRONT SYSTEMS TYP.	
• ALL WINDOW AND DOOR GLAZING IS TO BE CLEAR / INSULATED UNLESS NOTED OTHERWISE.	
• WINDOW AND DOOR GLAZING TO BE TEMPERED AT LOCATIONS INDICATED WITH "".	
• NEW STOREFRONT FRAMING SYSTEM TO BE SUPPLIED BY G.C.	
• G.C. TO VERIFY ALL FRAMING OPENING SIZES AND MATERIALS WITH ARCHITECT PRIOR TO FABRICATION.	
• STOREFRONT SYSTEM BASED ON KAWNEER 451T WITH 1" INSULATED GLAZING, FRONT SET, COLOR: BLACK.	
KEY NOTES	
#	NOTE
1	NEW STOREFRONT SYSTEM AND ENTRY DOORS
2	NEW ACCESSIBLE SLOPED ENTRY WALKWAY & LANDING
3	NEW CONCRETE STAIR, LANDING - REFER TO DETAILS IN A400'S
4	NEW SIGNAGE SIGN FURNISHED, PERMITTED AND INSTALLED UNDER SEPARATED PERMIT.
5	NEW INSULATED HOLLOW METAL DOOR AND FRAME SYSTEM
6	REFER TO ELEC. DWGS. FOR MODIFICATIONS TO EXISTING ELEC. EQUIPMENT.
7	NEW CUSTOM HISTORICAL REPLACEMENT DOOR OR WINDOW IN EXIST. LOCATION.
8	G.C. AND MASONRY SUBCONTRACTOR TO VISUAL INSPECT EXISTING MASONRY WALLS AND IDENTIFY AREAS REQUIRING RE-POINTING. MASONRY RE-POINTING SHALL BE CARRIED AS AN ALLOWANCE. COORDINATE WITH MASONRY CLEANINGS AND RE-POINTING SPECIFICATIONS.
9	CANOPY INTENT IS TO MATCH EXISTING, SELECTIVE DEMOLITION IS REQUIRED IN ORDER TO VERIFY THE EXISTING CONDITIONS AND MATCH IT EXACTLY PER CITY REQUIREMENTS.



2 EXTERIOR ELEVATION

SCALE: 1/4" = 1'-0"



1 EXTERIOR ELEVATION

SCALE: 1/4" = 1'-0"

ARCHITECT

BKA ARCHITECTS

Boston + Brockton
142 Crescent Street
Brockton, MA 02302
508.583.5603
bkaarchitects.com

CONSULTANT

SEAL

ISSUED

DATE ISSUANCE

09/18/20 ISSUED FOR BID

10/-/20 ISSUED FOR PERMIT

12/09/20 ISSUED FOR BID

REVISIONS

1 10/28/20 RF1 #1

OWNER/CLIENT

ASCEND

PROJECT

ASCEND CANNABIS
DISPENSARY

115 COGGESHALL STREET
NEW BEDFORD, MA

DRAWING TITLE

EXTERIOR
ELEVATIONS

DRAWING INFORMATION

Job Number: 219246

Checked By: NLL

Drawn By: CMD

DRAWING NUMBER

A

300

FINISH SPECIFICATIONS								
TAG	MATERIAL	MANUF.	DESCRIPTION	COLOR/FINISH	SIZE	INSTALLATION	LOCATION	REMARKS
STOREFRONT								
GL-1	CLEAR INSULATED GLASS	STOREFRONT VENDOR	TEMPERED	CLEAR	1" INSULATED ASSEMBLY	KAWNEER SYSTEM	STOREFRONT SYSTEM	REFER TO AND COORD. W/ WINDOW SCHEDULE FOR ADDITIONAL INFORMATION
GL-2	LAMINATED FROSTED GLASS	STOREFRONT VENDOR	LOW - IRON TEMPERED	FROSTED	1/2" THICK			REFER TO AND COORD. W/ WINDOW SCHEDULE FOR ADDITIONAL INFORMATION
GL-3	LAMINATED CLEAR GLASS	SF VENDOR OR G.C.	LOW - IRON TEMPERED	EXTRA-CLEAR	1/2" THICK			REFER TO AND COORD. W/ WINDOW SCHEDULE FOR ADDITIONAL INFORMATION
PT-5	EXTERIOR PAINT	BENJAMIN MOORE	REGAL EXTERIOR MOORLIFE	TBD / TBD			EXPOSED EXTERIOR ELEMENTS	
PT-6	EXTERIOR PAINT	BENJAMIN MOORE	REGAL EXTERIOR MOORLIFE	TBD / TBD			EXTERIOR	
MTL-1	ALUMINUM STOREFRONT SYSTEM	KAWNEER	TRIFAB 451T FRAMING SYSTEM	TBD	2" PROFILE, 4 1/2" DEPTH		REAR STOREFRONT	
FBC-1	FIBER CEMENT BOARD/ BATTEN / JAMES HARDIE / SMOOTH BOARD	TBD	TBD	BLACK POWDER COAT				
MTL-3	STEEL	TBD	TBD	BLACK POWDER COAT	CUSTOM			

GENERAL NOTES	
NOTE: REFER TO DOOR AND WINDOW SCHEDULE FOR ALL DOORS AND STOREFRONT SYSTEMS TYP.	
• ALL WINDOW AND DOOR GLAZING IS TO BE CLEAR / INSULATED UNLESS NOTED OTHERWISE.	
• WINDOW AND DOOR GLAZING TO BE TEMPERED AT LOCATIONS INDICATED WITH ***.	
• NEW STOREFRONT FRAMING SYSTEM TO BE SUPPLIED BY G.C.	
• G.C. TO VERIFY ALL FRAMING OPENING SIZES AND MATERIALS WITH ARCHITECT PRIOR TO FABRICATION.	
• STOREFRONT SYSTEM BASED ON KAWNEER 451T WITH 1" INSULATED GLAZING, FRONT SET, COLOR: BLACK.	
KEY NOTES	
#	NOTE
1	NEW STOREFRONT SYSTEM AND ENTRY DOORS
2	NEW ACCESSIBLE SLOPED ENTRY WALKWAY & LANDING
3	NEW CONCRETE STAIR, LANDING - REFER TO DETAILS IN A400'S
4	NEW SIGNAGE SIGN FURNISHED, PERMITTED AND INSTALLED UNDER SEPARATED PERMIT.
5	NEW INSULATED HOLLOW METAL DOOR AND FRAME SYSTEM
6	REFER TO ELEC. DWGS. FOR MODIFICATIONS TO EXISTING ELEC. EQUIPMENT.
7	NEW CUSTOM HISTORICAL REPLACEMENT DOOR OR WINDOW IN EXIST. LOCATION.
8	G.C. AND MASONRY SUBCONTRACTOR TO VISUAL INSPECT EXISTING MASONRY WALLS AND IDENTIFY AREAS REQUIRING RE-POINTING. MASONRY RE-POINTING SHALL BE CARRIED AS AN ALLOWANCE. COORDINATE WITH MASONRY CLEANINGS AND RE-POINTING SPECIFICATIONS.
9	CANOPY INTENT IS TO MATCH EXISTING, SELECTIVE DEMOLITION IS REQUIRED IN ORDER TO VERIFY THE EXISTING CONDITIONS AND MATCH IT EXACTLY PER CITY REQUIREMENTS

