

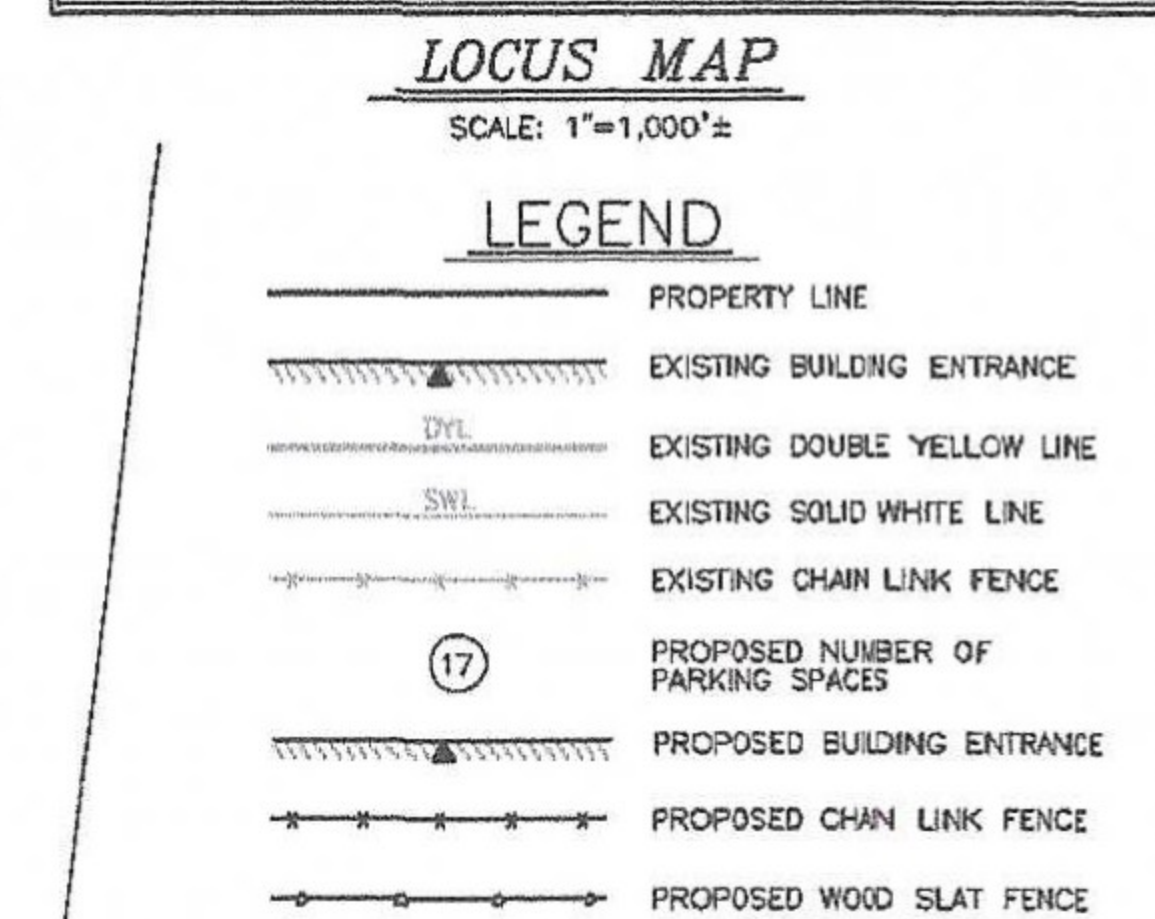
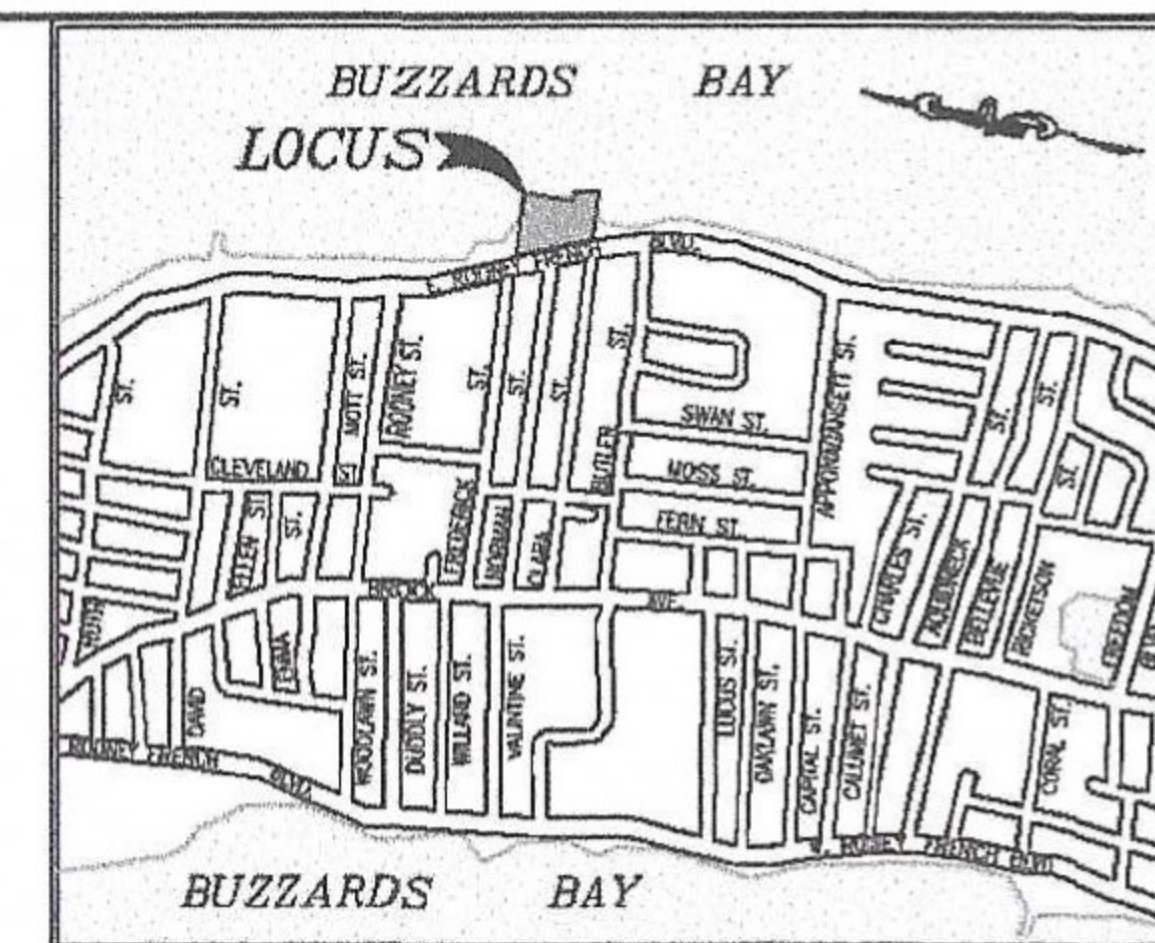
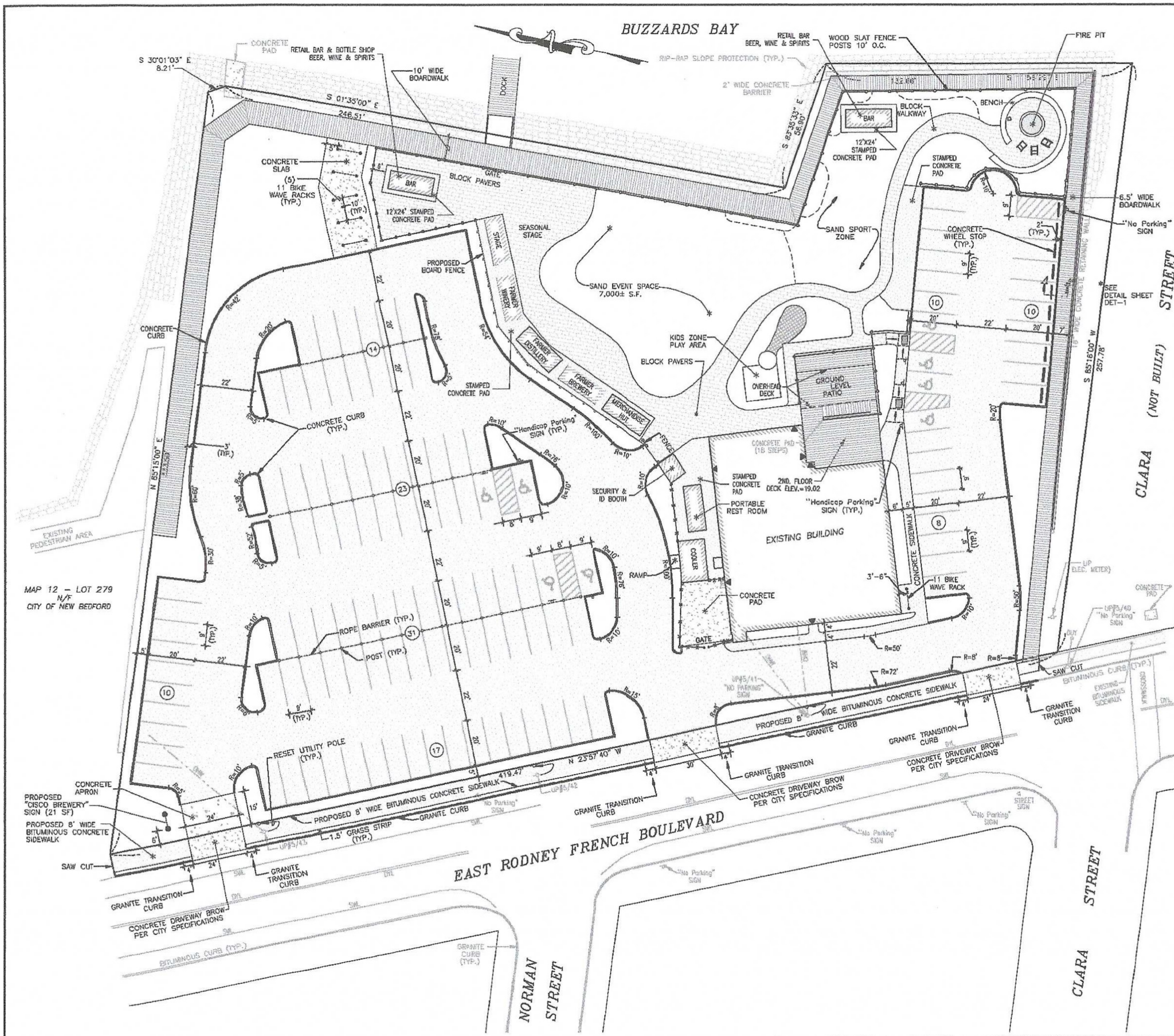


1380 East Rodney French Blvd
New Bedford MA 02744



Signature SIGNS
Visual Communication

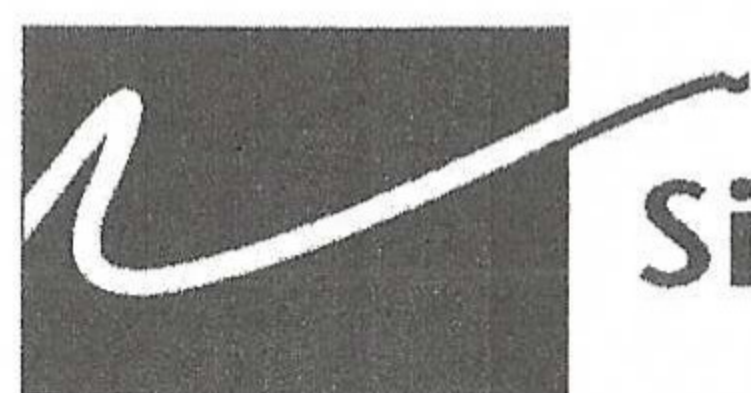
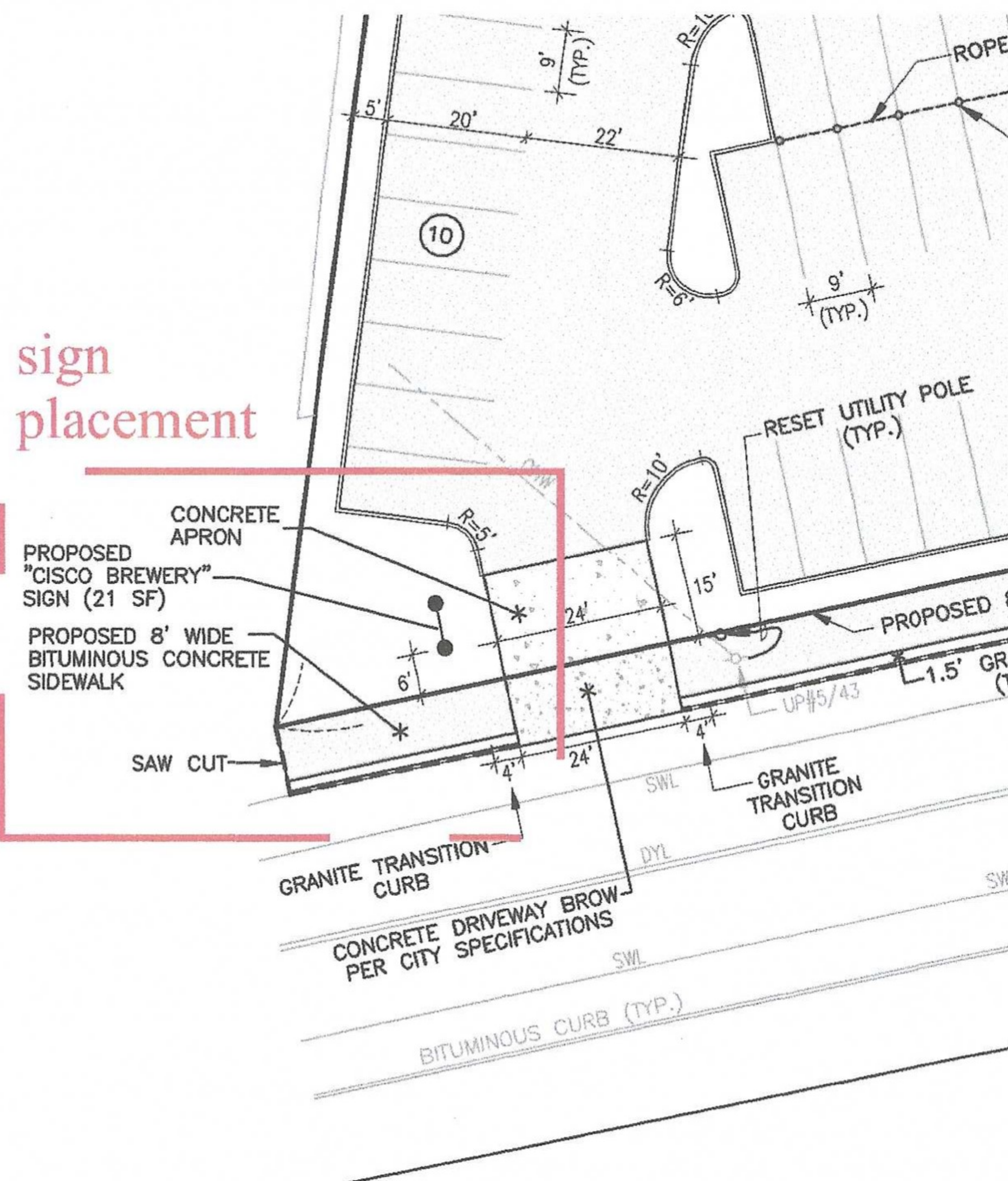
833 American Legion Hwy.
Westport, MA 02790
mysigns@msn.com | 774-309-3307



- NOTES:**
- I HEREBY CERTIFY THAT THE PROJECT AS DESIGNED MEETS THE APPLICABLE PROVISIONS OF THE AMERICANS WITH DISABILITIES ACT (ADA) AND THE MASSACHUSETTS ARCHITECTURAL ACCESS BOARD.
 - DRIVEWAY PERMIT SUBJECT TO TRAFFIC COMMISSION APPROVAL.
 - PERMITS FOR SIDEWALK, DRIVEWAYS, WATER & SEWER MUST BE OBTAINED FROM THE DEPARTMENT OF PUBLIC INFRASTRUCTURE ENGINEERING DIVISION.
 - ANY MINOR MODIFICATIONS (AS DETERMINED BY THE CITY PLANNER AND CITY ENGINEER) TO THE INFORMATION SHOWN ON THE APPROVED SITE PLANS SHALL BE SUBMITTED TO THE CITY PLANNER AND CITY ENGINEER AS A MINOR PLAN REVISION FOR APPROVAL PRIOR TO THE WORK BEING PERFORMED.
 - ANY WORK AND MATERIAL WITHIN THE CITY RIGHT-OF-WAY SHALL CONFORM TO THE CITY OF NEW BEDFORD REQUIREMENTS.
 - ALL EROSION CONTROL MEASURES SHALL BE IN PLACE PRIOR TO CONSTRUCTION.
 - ALL PAVEMENT MARKINGS AND SIGNS SHALL CONFORM TO MUTCD REQUIREMENTS.
 - BICYCLE RACKS SHALL BE 9 BIKE CAPACITY WAVE RACKS WITH IN-GROUND MOUNTING.

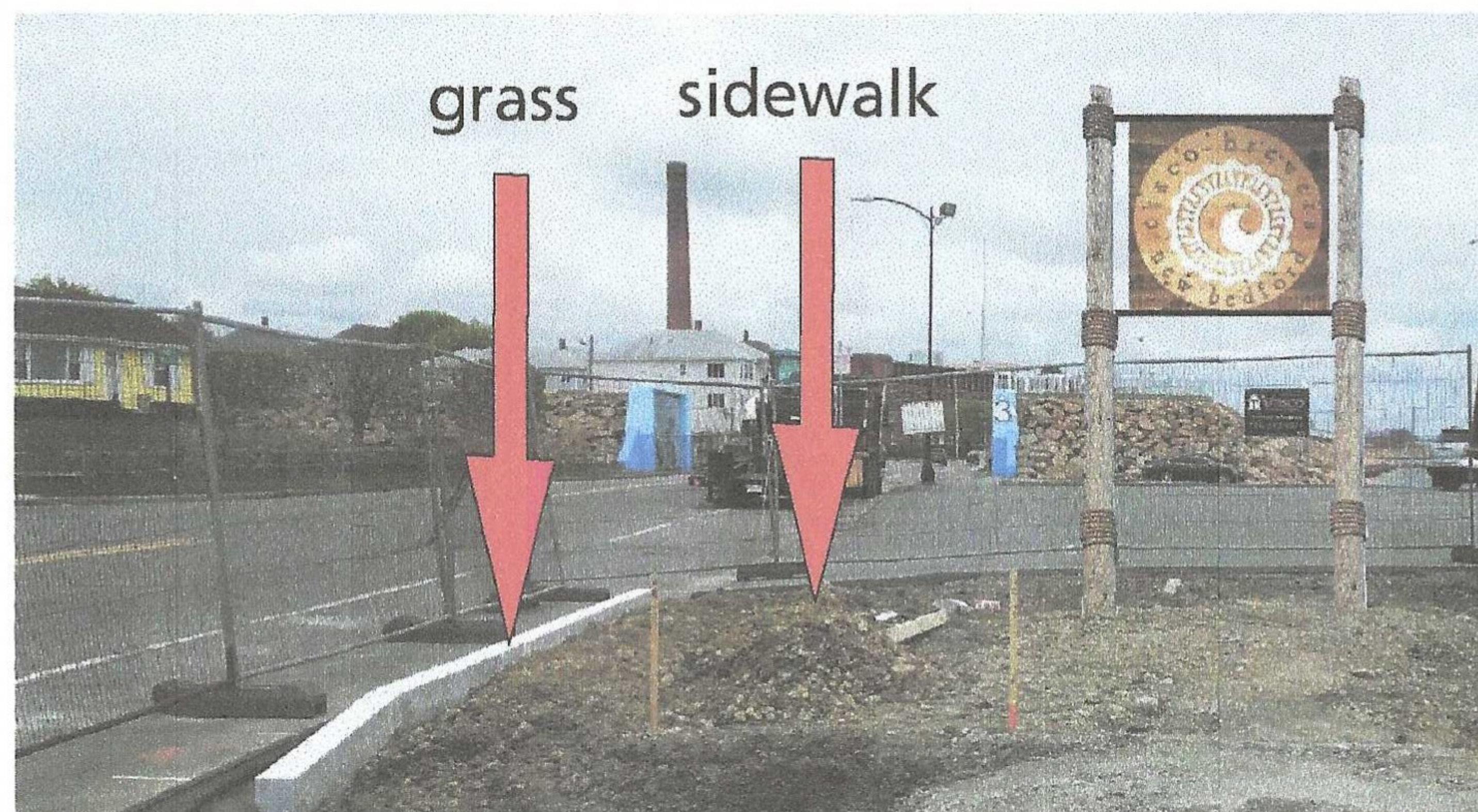
Project	Client	City	Site	Revision	Date	By	Check	App'd
CISCO NEW BEDFORD	1480 EAST RODNEY FRENCH BLVD.	NEW BEDFORD, MA 02744	SERVEDWELL NEW BEDFORD, LLC	1	MARCH 15, 2019	NAD	SDG	SDG
				2	MAY 17, 2021	ADD Pylon SIGN	SDG	SDG
				3	MARCH 12, 2021	REVISE WATER SERVICE	SDG	SDG
				4	DEC 22, 2020	REVISE LAYOUT/UTILITIES	SDG	SDG
				5	NOV 23, 2020	REVISE BUILDING LAYOUT	SDG	SDG
				6	FEB 24, 2020	CONSERVATION COMMISSION REVISIONS	SDG	SDG
				7	FEB 11, 2020	CONSERVATION COMMISSION REVISIONS	SDG	SDG
				8	SEPT. 3, 2018	REVISE PARKING	SDG	SDG
				9	JULY 5, 2019	MISCELLANEOUS PLANNING REVISIONS	SDG	SDG

sign
placement



Signature SIGNS
Visual Communication

833 American Legion Hwy.
Westport, MA 02790
mysigns@msn.com | 774-309-3307



sign will be 6 feet from property line

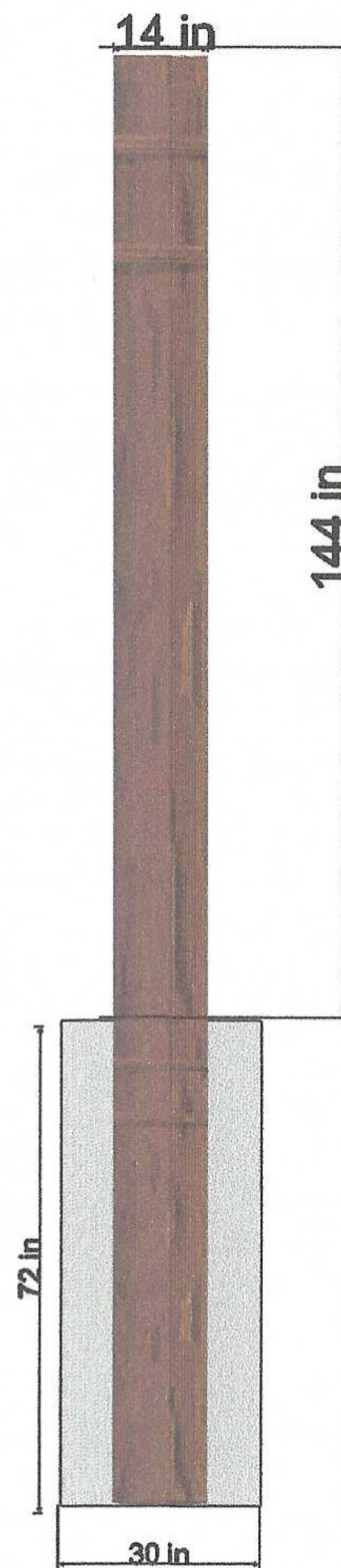
sign is 55" x 55" (21 sq ft)
 utility pole is 144" out of ground
 84" from bottom of sign to ground
 5" of pole above sign



Signature SIGNS
 Visual Communication

833 American Legion Hwy.
 Westport, MA 02790
 mysigns@msn.com | 774-309-3307



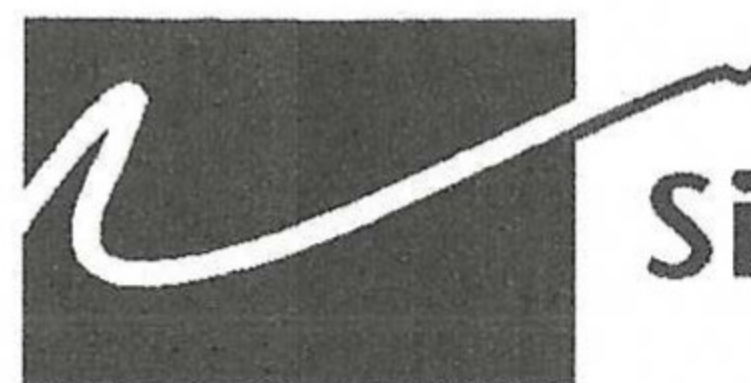


Utility poles are buried according to a particular formula
10 percent of the pole's height plus two feet equals
the appropriate depth of burial.

$18 \text{ feet} - 10\% \ 18" + 24" = 42"$

We will be putting pole in ground at 72". 30" more than required.

Concrete is not used as it rots the pole.
Pole is stamped in the ground.



Signature SIGNS
Visual Communication

833 American Legion Hwy.
Westport, MA 02790
mysigns@msn.com | 774-309-3307