

STARBUCKS COFFEE #
New Bedford MA



21-56172

***HILTON*DISPLAYS**

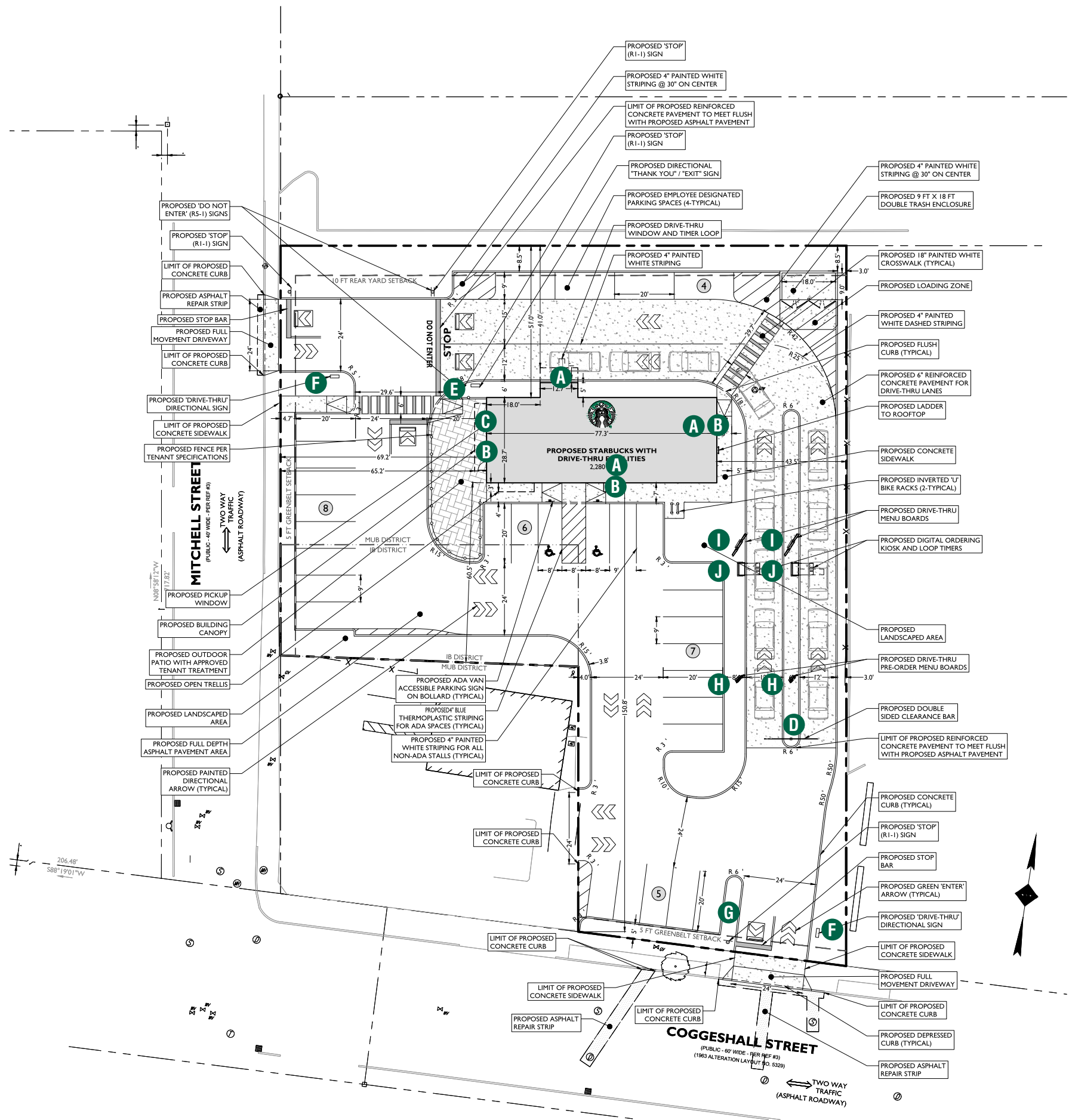
125 HILLSIDE DRIVE • GREENVILLE SC 29607

P 800 353 9132 • F 864 242 2204

www.hiltondisplays.com

SITE PLAN

- A 48" SIREN
- B 48" DRIVE THRU CABINET-RH
- C 20" CHANNEL LETTERS
- D CLEARANCE BAR
- E 46" TY/EO DIRECTIONAL
- F 46" DT DIRECTIONAL
- G PYLON
- H PRE-MENU BOARD
- I MENU BOARD
- J DOS ON CANOPY / DCB



HILTONDISPLAYS
125 HILLSIDE DRIVE • GREENVILLE SC 29607
P 800 353 9132 • F 864 242 2204
www.hiltondisplays.com

QID 21-56172
JOB NAME
Starbucks
LOCATION
New Bedford MA
CUSTOMER CONTACT
SALESMAN / PM
Joe Nolasco
DESIGNER
Glenn Miller
DWG. DATE
6-30-21
REV. DATE / REVISION
SCALE
As Noted
FILE
2021/Starbucks/Locations/ New Bedford MA/21-56172/ SB New Bedford MA 21-56172

DESIGN SPECIFICATIONS ACCEPTED BY:

EST:	CLIENT:
SLS/PM:	LANDLORD:

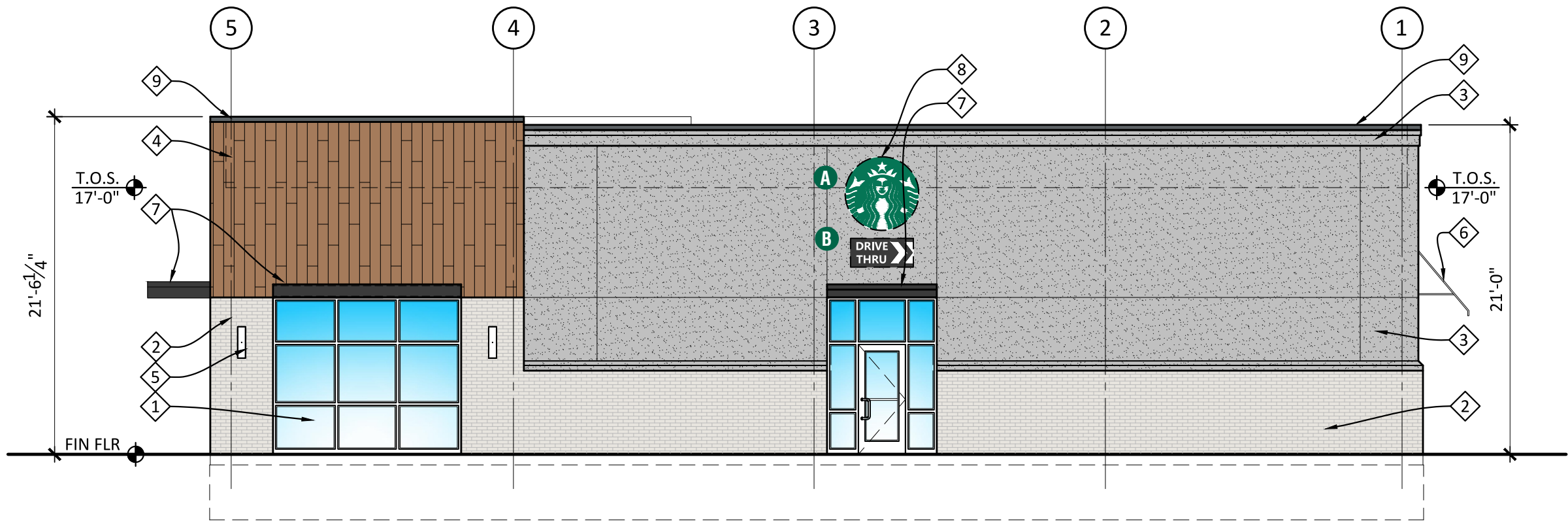
THE INTENT OF THIS DRAWING IS TO SHOW A CONCEPTUAL REPRESENTATION OF THE PROPOSED SIGNAGE. DUE TO VARIATIONS IN PRINTING DEVICES AND SUBSTRATES, THE FINISHED PRODUCT MAY DIFFER SLIGHTLY FROM DRAWING.

 Underwriters Laboratories Inc.

DRY	
DAMP	
WET	X

ELEVATION

- A 48" SIREN
- B 48" DRIVE THRU CABINET-RH
- C 20" CHANNEL LETTERS
- D CLEARANCE BAR
- E 46" TY/EO DIRECTIONAL
- F 46" DT DIRECTIONAL
- G PYLON
- H PRE-MENU BOARD
- I MENU BOARD
- J DOS ON CANOPY / DCB



PRELIMINARY SOUTH ELEVATION

SCALE: 1/8" = 1'-0"

HILTONDISPLAYS
125 HILLSIDE DRIVE • GREENVILLE SC 29607
P 800 353 9132 • F 864 242 2204
www.hiltondisplays.com

QID 21-56172

JOB NAME

Starbucks

LOCATION

New Bedford MA

CUSTOMER CONTACT

SALESMAN / PM

Joe Nolasco

DESIGNER

Glenn Miller

DWG. DATE

6-30-21

REV. DATE / REVISION

SCALE

As Noted

FILE

2021/Starbucks/Locations/
New Bedford MA/21-56172/
SB New Bedford MA 21-56172

DESIGN SPECIFICATIONS ACCEPTED BY:

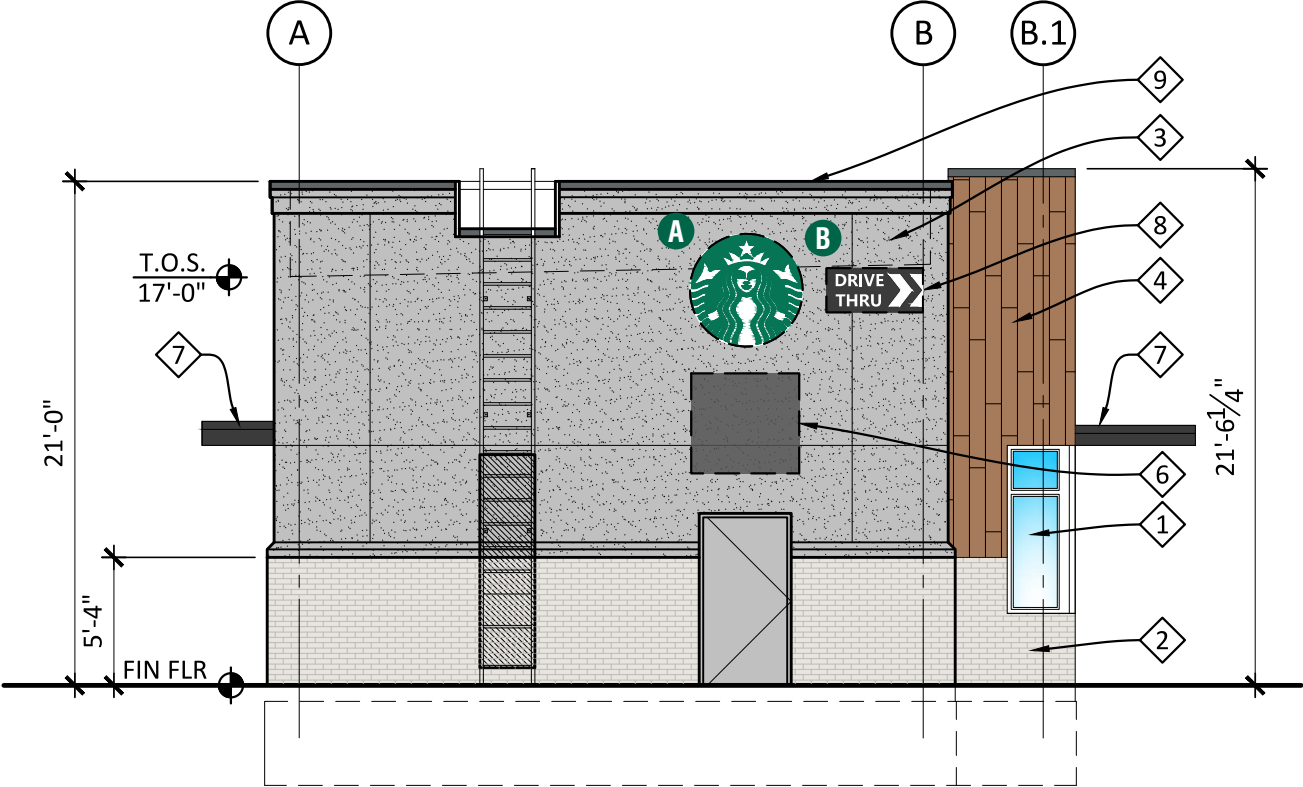
EST:	CLIENT:
SLS/PM:	LANDLORD:

THE INTENT OF THIS DRAWING IS TO SHOW A CONCEPTUAL REPRESENTATION OF THE PROPOSED SIGNAGE. DUE TO VARIATIONS IN PRINTING DEVICES AND SUBSTRATES, THE FINISHED PRODUCT MAY DIFFER SLIGHTLY FROM DRAWING.



ELEVATION

- A 48" SIREN
- B 48" DRIVE THRU CABINET-RH
- C 20" CHANNEL LETTERS
- D CLEARANCE BAR
- E 46" TY/EO DIRECTIONAL
- F 46" DT DIRECTIONAL
- G PYLON
- H PRE-MENU BOARD
- I MENU BOARD
- J DOS ON CANOPY / DCB



PRELIMINARY EAST ELEVATION

SCALE: 1/8" = 1'-0"

QID 21-56172

JOB NAME

Starbucks

LOCATION

New Bedford MA

CUSTOMER CONTACT

SALESMAN / PM

Joe Nolasco

DESIGNER

Glenn Miller

DWG. DATE

6-30-21

REV. DATE / REVISION

SCALE

As Noted

FILE

2021/Starbucks/Locations/
New Bedford MA/21-56172/
SB New Bedford MA 21-56172

DESIGN SPECIFICATIONS ACCEPTED BY:

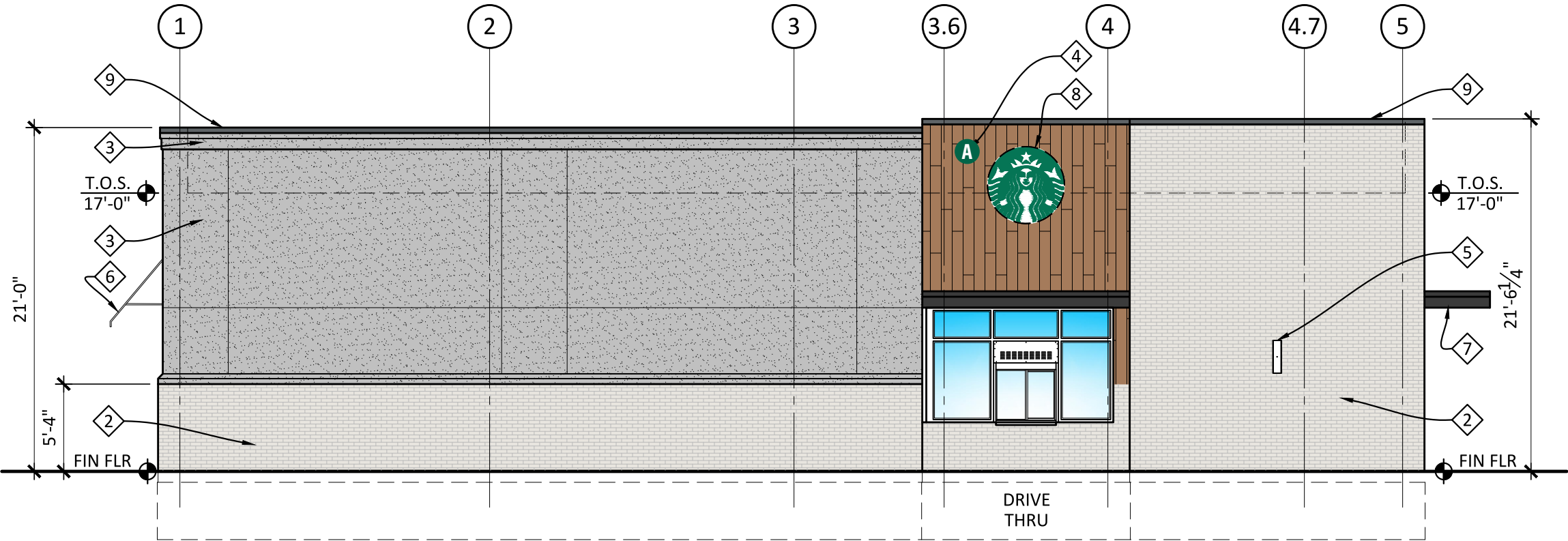
EST: CLIENT:

SLS/PM: LANDLORD:

THE INTENT OF THIS DRAWING IS TO SHOW A CONCEPTUAL REPRESENTATION OF THE PROPOSED SIGNAGE. DUE TO VARIATIONS IN PRINTING DEVICES AND SUBSTRATES, THE FINISHED PRODUCT MAY DIFFER SLIGHTLY FROM DRAWING.

ELEVATION

- A 48" SIREN
- B 48" DRIVE THRU CABINET-RH
- C 20" CHANNEL LETTERS
- D CLEARANCE BAR
- E 46" TY/EO DIRECTIONAL
- F 46" DT DIRECTIONAL
- G PYLON
- H PRE-MENU BOARD
- I MENU BOARD
- J DOS ON CANOPY / DCB



PRELIMINARY NORTH ELEVATION
SCALE: 1/8" = 1'-0"

QID 21-56172
JOB NAME
Starbucks
LOCATION
New Bedford MA
CUSTOMER CONTACT
SALESMAN / PM
Joe Nolasco
DESIGNER
Glenn Miller
DWG. DATE
6-30-21
REV. DATE / REVISION
SCALE
As Noted
FILE
2021/Starbucks/Locations/ New Bedford MA/21-56172/ SB New Bedford MA 21-56172

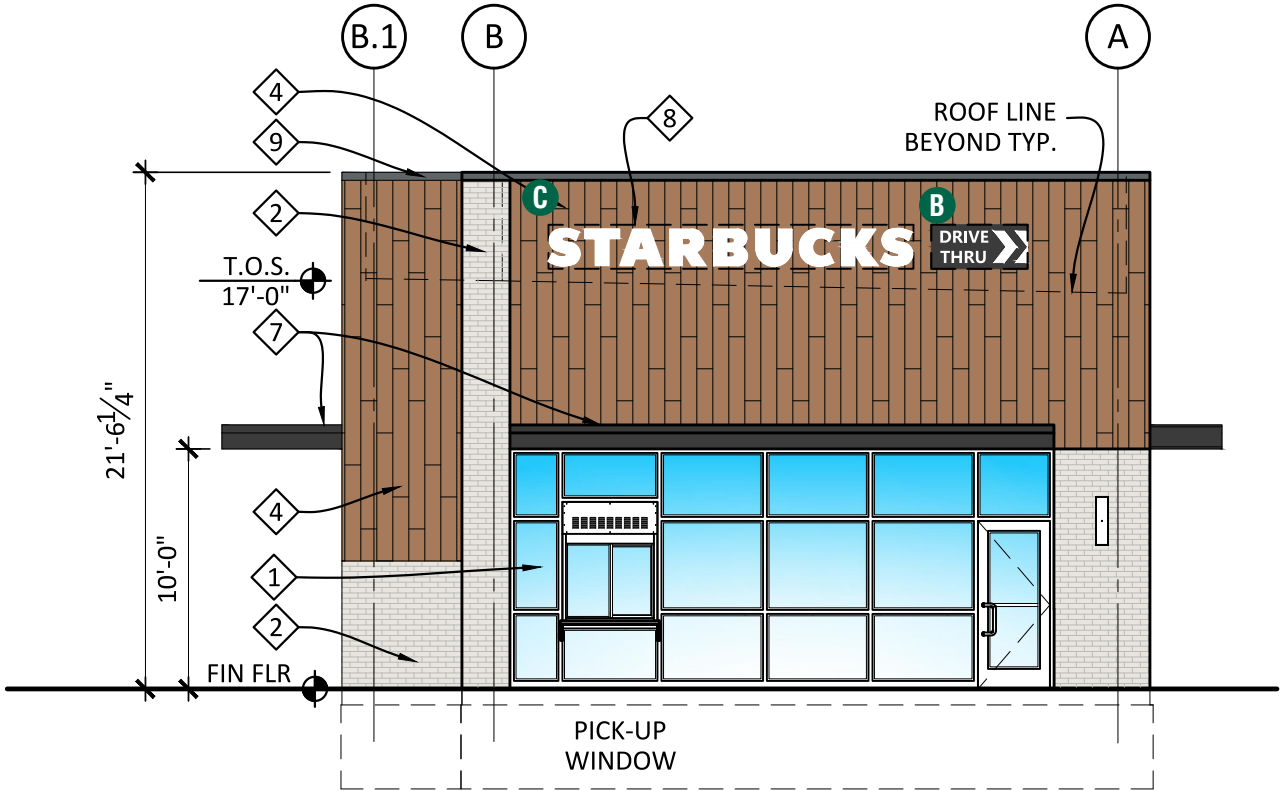
DESIGN SPECIFICATIONS ACCEPTED BY:

EST:	CLIENT:
SLS/PM:	LANDLORD:

THE INTENT OF THIS DRAWING IS TO SHOW A CONCEPTUAL REPRESENTATION OF THE PROPOSED SIGNAGE. DUE TO VARIATIONS IN PRINTING DEVICES AND SUBSTRATES, THE FINISHED PRODUCT MAY DIFFER SLIGHTLY FROM DRAWING.

ELEVATION

- A 48" SIREN
- B 48" DRIVE THRU CABINET-RH
- C 20" CHANNEL LETTERS
- D CLEARANCE BAR
- E 46" TY/EO DIRECTIONAL
- F 46" DT DIRECTIONAL
- G PYLON
- H PRE-MENU BOARD
- I MENU BOARD
- J DOS ON CANOPY / DCB



PRELIMINARY WEST ELEVATION
SCALE: 1/8" = 1'-0"

HILTONDISPLAYS
125 HILLSIDE DRIVE • GREENVILLE SC 29607
P 800 353 9132 • F 864 242 2204
www.hiltondisplays.com

QID 21-56172

JOB NAME

Starbucks

LOCATION

New Bedford MA

CUSTOMER CONTACT

SALESMAN / PM

Joe Nolasco

DESIGNER

Glenn Miller

DWG. DATE

6-30-21

REV. DATE / REVISION

SCALE

As Noted

FILE

2021/Starbucks/Locations/
New Bedford MA/21-56172/
SB New Bedford MA 21-56172

DESIGN SPECIFICATIONS ACCEPTED BY:

EST:	CLIENT:
SLS/PM:	LANDLORD:

THE INTENT OF THIS DRAWING IS TO SHOW A CONCEPTUAL REPRESENTATION OF THE PROPOSED SIGNAGE. DUE TO VARIATIONS IN PRINTING DEVICES AND SUBSTRATES, THE FINISHED PRODUCT MAY DIFFER SLIGHTLY FROM DRAWING.

 Underwriters Laboratories Inc.

DRY	
DAMP	
WET	X

48” ILLUMINATED SIREN

Qty. 3 SBC-S13163-SL

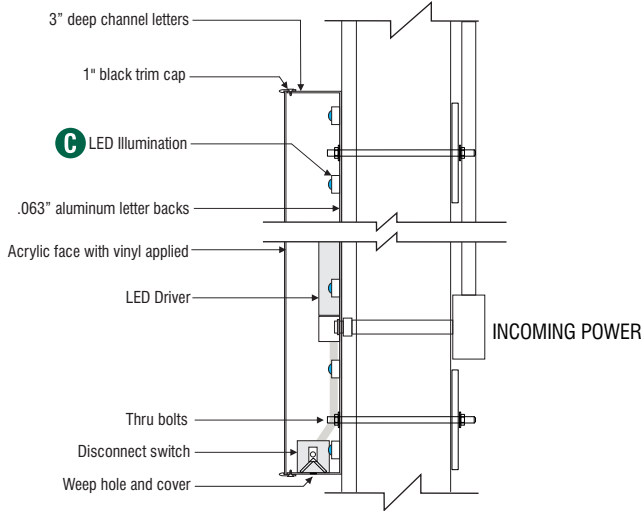
A



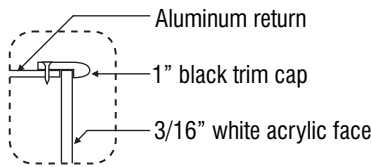
1 Front View

Scale: 3/4" = 1'-0" (11X17 Paper)

2 Side view



3 Disk Section View Typ.



4 Enlarged Detail

SPECIFICATIONS:

- A Single faced internally illuminated wall mount logo disk. Cabinet to be 3" deep, fabricated aluminum returns and back. Paint cabinet black. Faces to be 3/16" white Plex with 1" black trimcap
- B Graphics of logo to be 1st surface 3M Translucent Scotchcal vinyl- Holly Green #3630-76. Siren to show thru White.
- C Internally illuminated logo disk with Sloan Prism Enlighten 6500K white LED's

COLOR LEGEND		
	PMS/PAINT	VINYL
	PMS 3425 C	3M 3630-76
	RAL 7021M	3M 3630-22
	PMS WHITE	3M 3630-20/ 7725-10 TRANSLUCENT OPAQUE
	PMS 369 C	NA
	REFL. WHITE	3M 680-10

wall mount EVOLVED			
Size	Sq.Ft.	Sq.M.	Volts
48" (1219.2mm)	12.56	1.17	120/277

HILTONDISPLAYS
125 HILLSIDE DRIVE • GREENVILLE SC 29607
P 800 353 9132 • F 864 242 2204
www.hiltondisplays.com

QID 21-56172

JOB NAME

Starbucks

LOCATION

New Bedford MA

CUSTOMER CONTACT

SALESMAN / PM

Joe Nolasco

DESIGNER

Glenn Miller

DWG. DATE

6-30-21

REV. DATE / REVISION

SCALE

As Noted

FILE

2021/Starbucks/Locations/
New Bedford MA/21-56172/
SB New Bedford MA 21-56172

DESIGN SPECIFICATIONS ACCEPTED BY:

EST:	CLIENT:
SLS/PM:	LANDLORD:

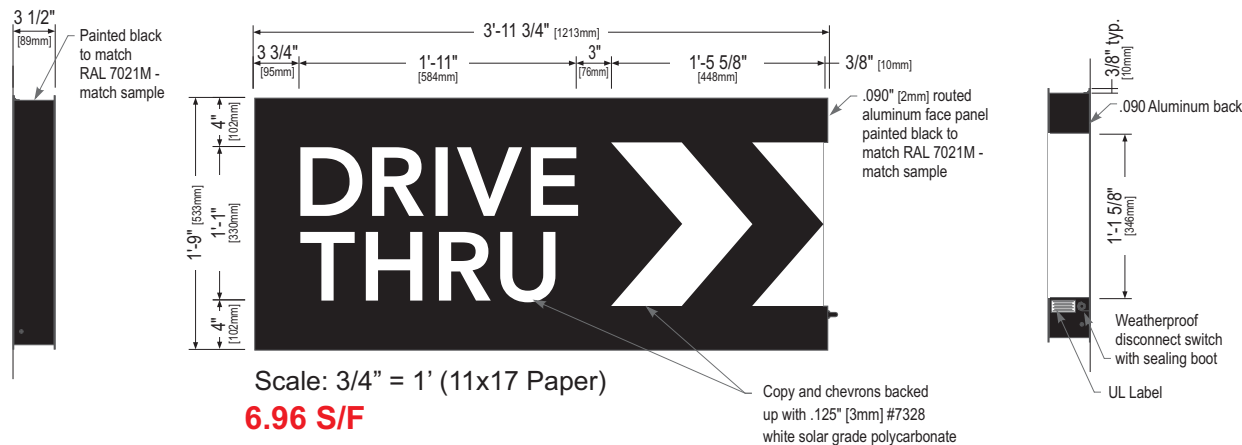
THE INTENT OF THIS DRAWING IS TO SHOW A CONCEPTUAL REPRESENTATION OF THE PROPOSED SIGNAGE. DUE TO VARIATIONS IN PRINTING DEVICES AND SUBSTRATES, THE FINISHED PRODUCT MAY DIFFER SLIGHTLY FROM DRAWING.



48” DT WALL SIGN-RH

Qty. 3 SBC-S14099-SL

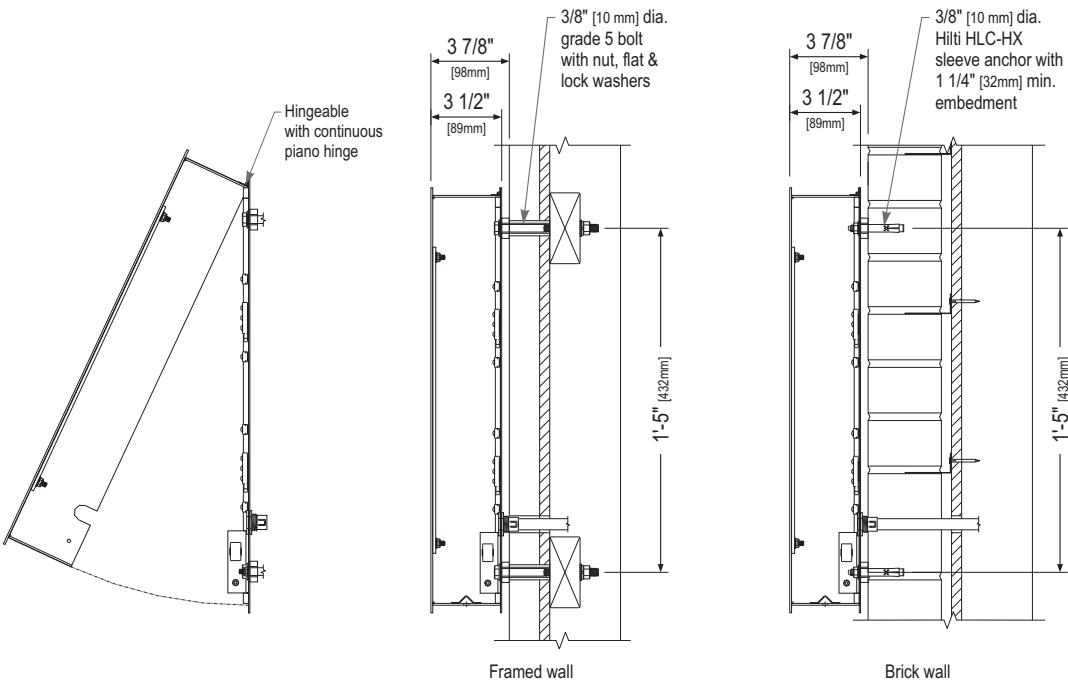
B



Left Side View

Front Elevation View

Right Side View



Service Position View
NOT TO SCALE

Section View at Installation Detail
NOT TO SCALE

COLOR LEGEND		
	PMS/PAINT	VINYL
	PMS 3425 C	3M 3630-76
	RAL 7021M	3M 3630-22
	PMS WHITE	3M 3630-20/ 7725-10 TRANSLUCENT OPAQUE
	PMS 369 C	NA
	REFL. WHITE	3M 680-10

Sign Specifications:

Cabinet:

- Fabricated .090" [2mm] aluminum housing painted black to match RAL 7021M with 3M #180-10 white vinyl end cap as shown.
- Directional copy and chevrons backed up with .125" white polycarb. All polycarb face elements to be attached to aluminum face panel with weld studs.
- Welded aluminum construction with no visible fasteners. Fasteners retaining the hinged face will be located on the bottom such that they are not visible. All fasteners used in the assembly of internal components shall be coated to prevent corrosion.
- Internal structure of cabinet shall be per approved shop drawings.
- Graphic elements are internally illuminated using Sloan Prism Enlighten LEDs. LED's to be mounted on back panel with self-contained power supply. All electrical components are removable for service.

Regulatory:

- Sign must meet all regulations in the National Electric Code as well as any local or state electrical codes.
- As per NEC 600.6, sign is equipped with a service disconnect switch.
- Sign must be listed as an Electric Sign per Underwriters Laboratories UL48 and/or CSA and bear the appropriate UL, CUL or CSA relevant certification marks.
Primary power by electrical contractor per NEC.

Size	Sq. Ft. ¹	Sq. Ft. ²	Volts	Amps
21"	4.52	6.96	120/277	0.85

1: Figured as illuminated center part
2: Figured as complete signage

HILTONDISPLAYS
125 HILLSIDE DRIVE • GREENVILLE SC 29607
P 800 353 9132 • F 864 242 2204
www.hiltondisplays.com

QID 21-56172

JOB NAME

Starbucks

LOCATION

New Bedford MA

CUSTOMER CONTACT

SALESMAN / PM

Joe Nolasco

DESIGNER

Glenn Miller

DWG. DATE

6-30-21

REV. DATE / REVISION

SCALE

As Noted

FILE

2021/Starbucks/Locations/
New Bedford MA/21-56172/
SB New Bedford MA 21-56172

DESIGN SPECIFICATIONS ACCEPTED BY:

EST:	CLIENT:
SLS/PM:	LANDLORD:

THE INTENT OF THIS DRAWING IS TO SHOW A CONCEPTUAL REPRESENTATION OF THE PROPOSED SIGNAGE. DUE TO VARIATIONS IN PRINTING DEVICES AND SUBSTRATES, THE FINISHED PRODUCT MAY DIFFER SLIGHTLY FROM DRAWING.

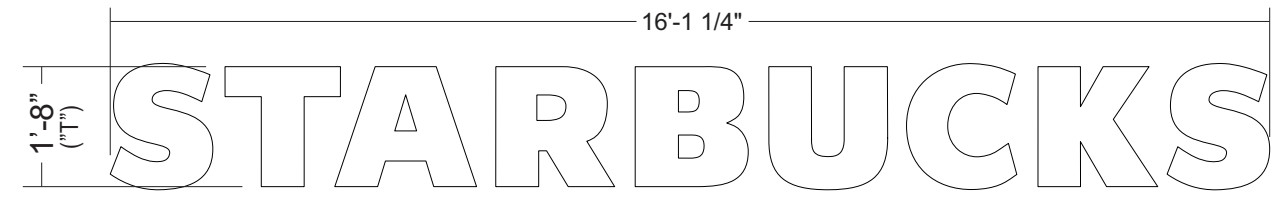


20” CHANNEL LETTERS - REMOTE

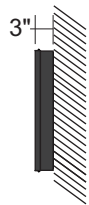
SBC-S13292-SB-W-SL

QTY. 1

C



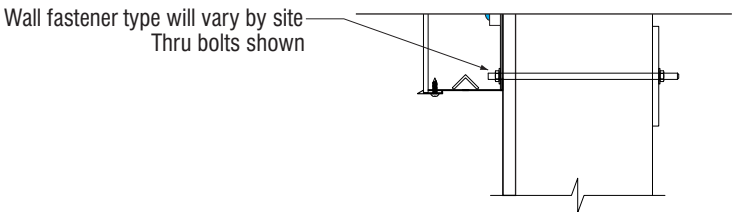
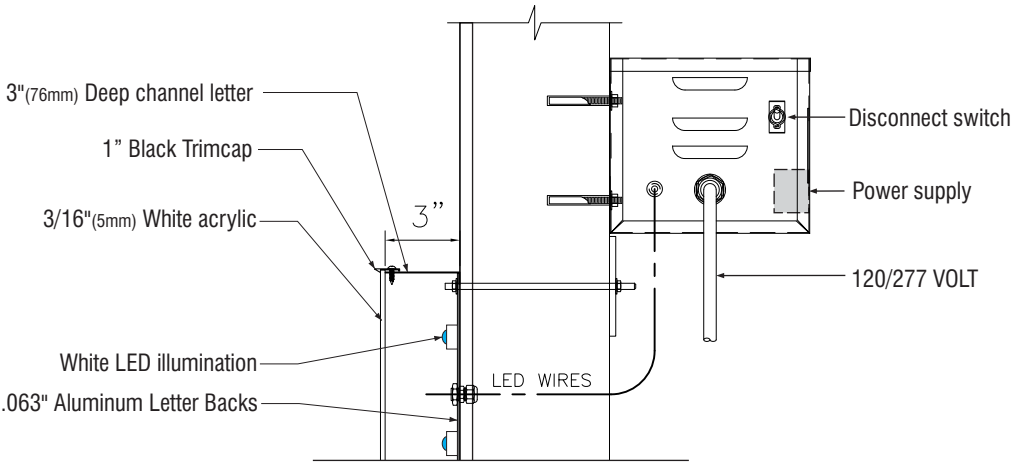
1 Front View
Scale: 3/8" = 1' (11x17 Paper)



2 Side View

SPECIFICATIONS

- A Internally illuminated channel letters to be fabricated from .040 returns aluminum with pre-painted White interiors and pre-finished Black returns. Letter backs to be aluminum stapled to sidewalls and sealed.
- B Faces to be 3/16" White acrylic with 1" Black trimcap
- C Letters illuminated w/ Sloan Prism Enlighten White 6500k LED's w/ remote power supply.
- D Letters to be installed flush to wall.



MOUNTING AND LETTER DETAIL(TYP)
SCALE: NTS

COLOR LEGEND		
	PMS/PAINT	VINYL
	PMS 3425 C	3M 3630-76
	RAL 7021M	3M 3630-22
	PMS WHITE	3M 3630-20/ 7725-10 TRANSLUCENT OPAQUE
	PMS 369 C	NA
	REFL. WHITE	3M 680-10

125 HILLSIDE DRIVE • GREENVILLE SC 29607
P 800 353 9132 • F 864 242 2204
www.hiltondisplays.com

QID 21-56172

JOB NAME

Starbucks

LOCATION

New Bedford MA

CUSTOMER CONTACT

SALESMAN / PM

Joe Nolasco

DESIGNER

Glenn Miller

DWG. DATE

6-30-21

REV. DATE / REVISION

SCALE

As Noted

FILE

2021/Starbucks/Locations/
New Bedford MA/21-56172/
SB New Bedford MA 21-56172

DESIGN SPECIFICATIONS ACCEPTED BY:

EST:	CLIENT:
SLS/PM:	LANDLORD:

THE INTENT OF THIS DRAWING IS TO SHOW A CONCEPTUAL REPRESENTATION OF THE PROPOSED SIGNAGE. DUE TO VARIATIONS IN PRINTING DEVICES AND SUBSTRATES, THE FINISHED PRODUCT MAY DIFFER SLIGHTLY FROM DRAWING.

Underwriters
Laboratories Inc.

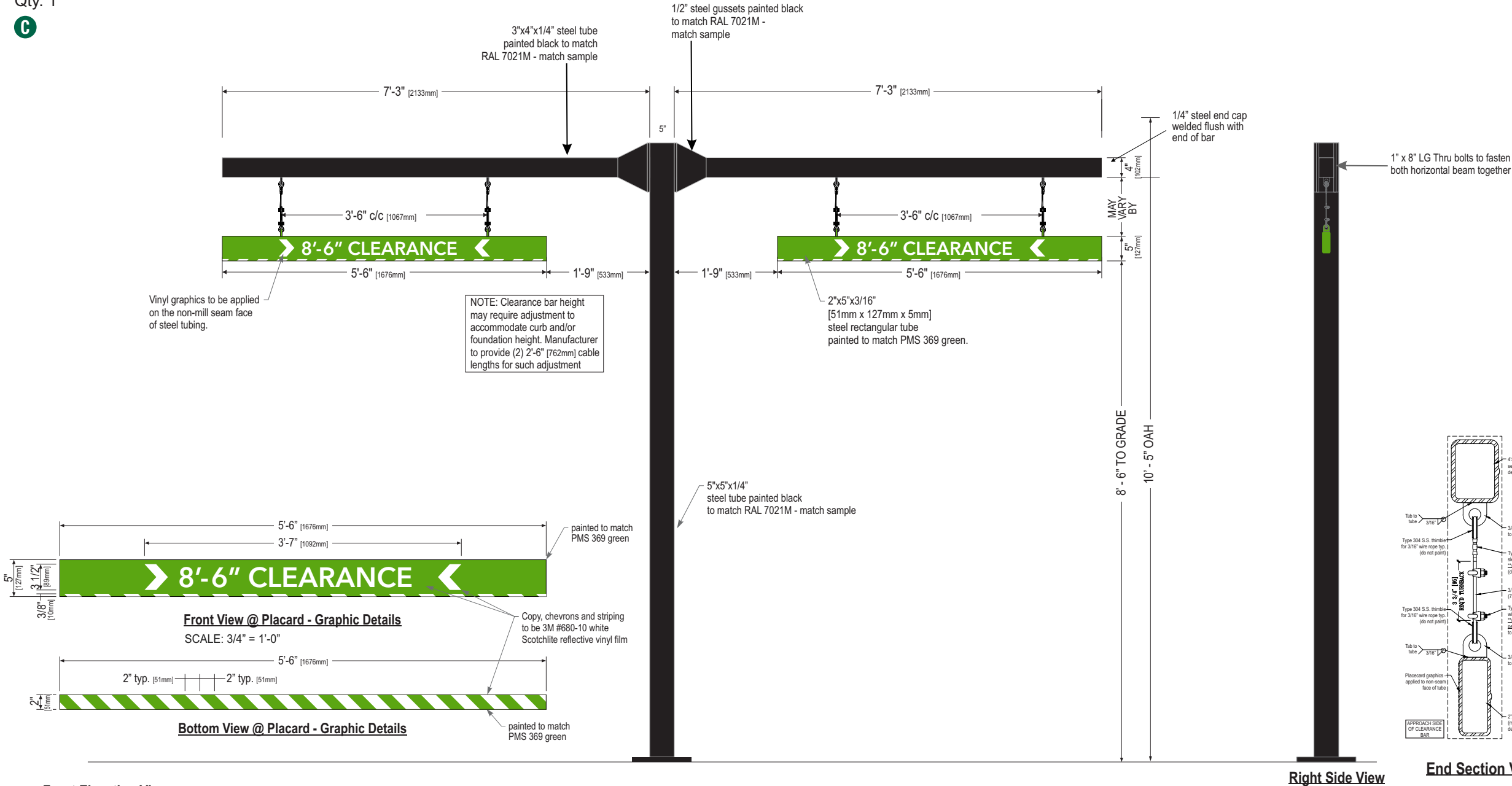
DRY
DAMP
WET

☐
☒
☒

DOUBLE CLEARANCE BAR (Standard Wind Load)

SBC-PART#

Qty. 1



Front Elevation View

SCALE: 1/2" = 1'-0"

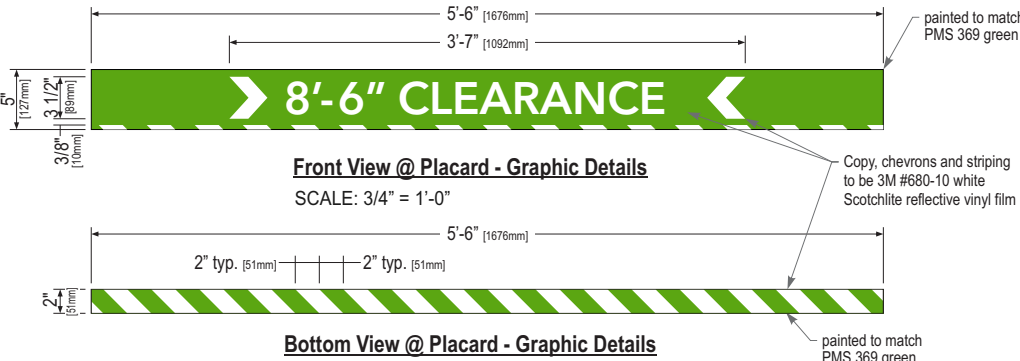
SIGN SPECIFICATIONS:

Scraper Bar:

- 2" x 5'-6" x 5" [51mm x 127mm] steel tube painted to match PMS 369 green.
- Flush steel end caps painted to match PMS 369 green.
- Copy and chevrons to be 1st surface computer cut 3M #680-10 white Scotchlite reflective vinyl film.
- Bottom striping to be 1st surface computer cut 3M #680-10 white Scotchlite reflective vinyl film. Striping extends 3/8" [10mm] onto front face.
- Suspend from support with SS cable & hardware. Cable provided requires field adjustment for proper clearance height.

Support:

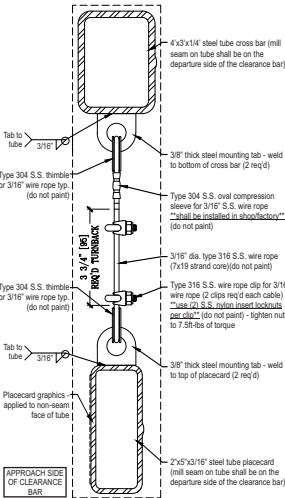
- Supporting structure will be all welded steel tube construction painted black to match RAL 7021M as per approved shop drawings.
- New foundation may be required.
- Clearance bar will be mounted on a concrete pedestal. Will be attached with anchor bolts and base plate (engineering to be confirmed)



Front View @ Placard - Graphic Details

SCALE: 3/4" = 1'-0"

Bottom View @ Placard - Graphic Details



End Section View

HILTONDISPLAYS

125 HILLSIDE DRIVE • GREENVILLE SC 29607
P 800 353 9132 • F 864 242 2204
www.hiltondisplays.com

QID 21-56172

JOB NAME

Starbucks

LOCATION

New Bedford MA

CUSTOMER CONTACT

SALESMAN / PM

Joe Nolasco

DESIGNER

Glenn Miller

DWG. DATE

6-30-21

REV. DATE / REVISION

SCALE

As Noted

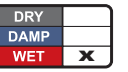
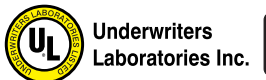
FILE

2021/Starbucks/Locations/
New Bedford MA/21-56172/
SB New Bedford MA 21-56172

DESIGN SPECIFICATIONS ACCEPTED BY:

EST:	CLIENT:
SLS/PM:	LANDLORD:

THE INTENT OF THIS DRAWING IS TO SHOW A CONCEPTUAL REPRESENTATION OF THE PROPOSED SIGNAGE. DUE TO VARIATIONS IN PRINTING DEVICES AND SUBSTRATES, THE FINISHED PRODUCT MAY DIFFER SLIGHTLY FROM DRAWING.

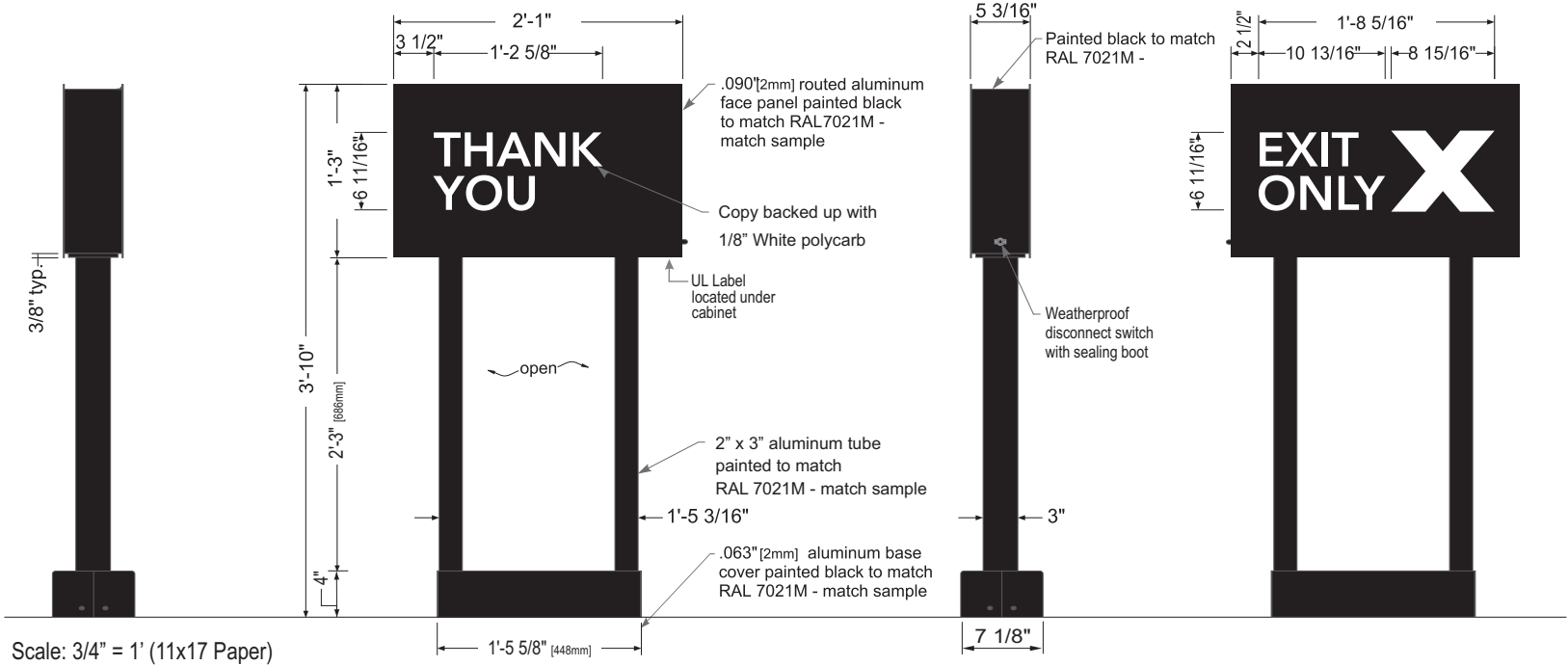


46” ILLUMINATED DIRECTIONAL TYEO

SBC-S14091-SL

Qty. 1

E



Street Side View

Front Elevation View

Store Side View

Rear Elevation View

Sign Specifications:

Fabricated .090" Aluminum cabinet painted black to match RAL 7021 as shown. Directional copy and graphics backed up with 1/8" white polycarbonate. All polycarbonate face elements to be attached to interior face panels with welded studs. All interior portions of sign cabinet painted white. Graphic elements illuminated with Sloan Prism Enlighten LEDs. LEDs mounted on internal baffle with self contained LED power supply. All components accessible through face of cabinet.

Support:

Support structure to be welded aluminum tube and plate construction painted black to match RAL 7021 Plate to be constructed to be retro-fittable to existing sign foundations. All foundations new and used to be analyzed for suitability and must meet all local city or state code regulations.

HILTONDISPLAYS

125 HILLSIDE DRIVE • GREENVILLE SC 29607
P 800 353 9132 • F 864 242 2204
www.hiltondisplays.com

QID 21-56172

JOB NAME

Starbucks

LOCATION

New Bedford MA

CUSTOMER CONTACT

SALESMAN / PM

Joe Nolasco

DESIGNER

Glenn Miller

DWG. DATE

6-30-21

REV. DATE / REVISION

SCALE

As Noted

FILE

2021/Starbucks/Locations/
New Bedford MA/21-56172/
SB New Bedford MA 21-56172

DESIGN SPECIFICATIONS ACCEPTED BY:

EST:	CLIENT:
SLS/PM:	LANDLORD:

THE INTENT OF THIS DRAWING IS TO SHOW A CONCEPTUAL REPRESENTATION OF THE PROPOSED SIGNAGE. DUE TO VARIATIONS IN PRINTING DEVICES AND SUBSTRATES, THE FINISHED PRODUCT MAY DIFFER SLIGHTLY FROM DRAWING.



COLOR LEGEND		
	PMS/PAINT	VINYL
	PMS 3425 C	3M 3630-76
	RAL 7021M	3M 3630-22
	PMS WHITE	3M 3630-20/ 7725-10 TRANSLUCENT OPAQUE
	PMS 369 C	NA
	REFL. WHITE	3M 680-10

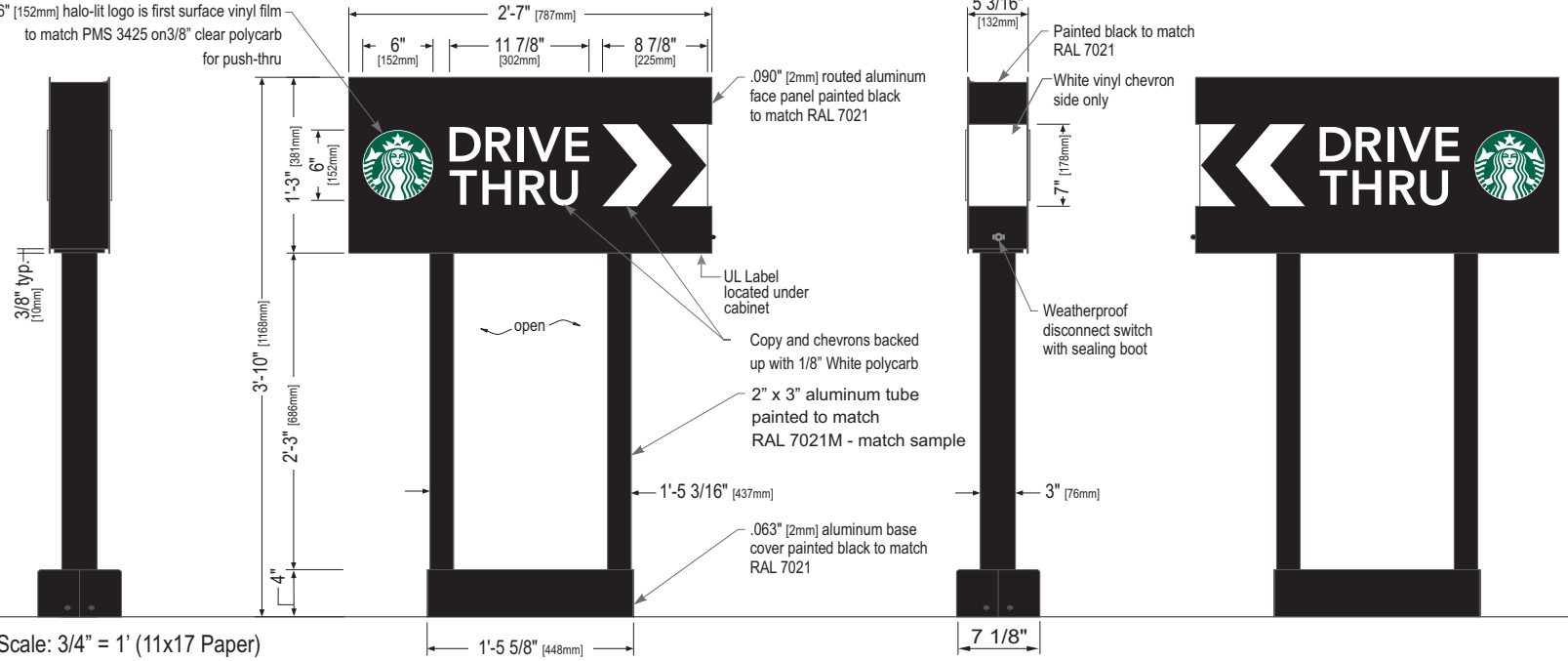
Size	Sq. Ft. ¹	Sq. Ft. ²	Volts	Amps
46" (1168mm)	2.60	7.99	120	0.85

46” ILLUMINATED DIRECTIONAL <DT / DT>

Qty. 2

SBC-S14104-DT-SL

F



Street Side View

Front Elevation View

Store Side View

Rear Elevation View

Sign Specifications:

Fabricated .090” Aluminum cabinet painted black to match RAL 7021 with white end cap as shown. Directional copy and chevrons backed up with 1/8” white polycarbonate. Siren logo is 6” dia. , 3/8” clear polycarbonate routed push thru aluminum face. Logo decorated with 1st surface applied vinyl film to match PMS 3425. All polycarbonate face elements to be attached to interior face panels with welded studs. All interior portions of sign cabinet painted white. Graphic elements illuminated with Sloan Prism Enlighten LEDs. LEDs mounted on internal baffle with self contained LED power supply. All components accessible through face of cabinet.

Support:

Support structure to be welded aluminum tube and plate construction painted black to match RAL 7021 Plate to be constructed to be retro-fittable to existing sign foundations. All foundations new and used to be analyzed for suitability and must meet all local city or state code regulations.



6” dia. halo lit logo has 3M 3630-76 Holly Green and 3630-20 White translucent vinyl film applied first surface to 3/8” Clear polycarbonate push thru with 3M 3735-60 White diffuser applied to second surface.

COLOR LEGEND		
	PMS/PAINT	VINYL
	PMS 3425 C	3M 3630-76
	RAL 7021M	3M 3630-22
	PMS WHITE	3M 3630-20/ 7725-10 TRANSLUCENT OPAQUE
	PMS 369 C	NA
	REFL. WHITE	3M 680-10

Size	Sq. Ft. ¹	Sq. Ft. ²	Volts	Amps
46" (1168mm)	3.23	9.90	120	0.85

HILTONDISPLAYS
125 HILLSIDE DRIVE • GREENVILLE SC 29607
P 800 353 9132 • F 864 242 2204
www.hiltondisplays.com

QID 21-56172

JOB NAME

Starbucks

LOCATION

New Bedford MA

CUSTOMER CONTACT

SALESMAN / PM

Joe Nolasco

DESIGNER

Glenn Miller

DWG. DATE

6-30-21

REV. DATE / REVISION

SCALE

As Noted

FILE

2021/Starbucks/Locations/
New Bedford MA/21-56172/
SB New Bedford MA 21-56172

DESIGN SPECIFICATIONS ACCEPTED BY:

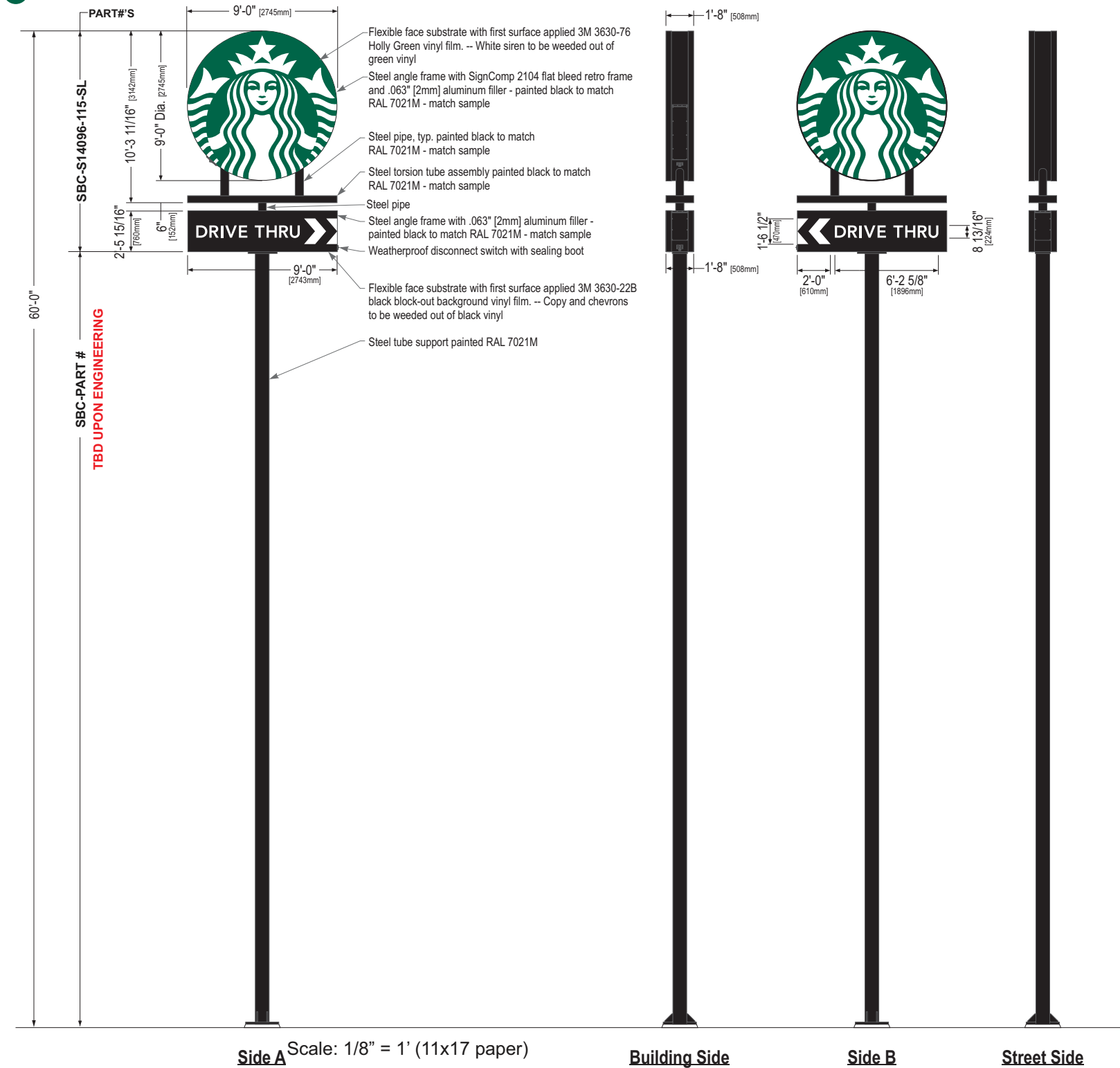
EST:	CLIENT:
SLS/PM:	LANDLORD:

THE INTENT OF THIS DRAWING IS TO SHOW A CONCEPTUAL REPRESENTATION OF THE PROPOSED SIGNAGE. DUE TO VARIATIONS IN PRINTING DEVICES AND SUBSTRATES, THE FINISHED PRODUCT MAY DIFFER SLIGHTLY FROM DRAWING.



Qty. 1

G








Disk Cabinet:

- Drive Thru Cabinet:**

- Support:

- Support structure and foundation type are subject to change upon review by licensed engineer if wind speeds based on geographic location of structure are greater than 115mph. Alternate wind speeds and soil conditions will result in alternate foundation type, structural tubing and/or pipe size used to support it.

COLOR LEGEND		
	PMS/PAINT	VINYL
	PMS 3425 C	3M 3630-76
	RAL 7021M	3M 3630-22
	PMS WHITE	3M 3630-20/ 7725-10 TRANSLUCENT OPAQUE
	PMS 369 C	NA
	REFL. WHITE	3M 680-10



QID 21-56172

JOB NAME

Starbucks

LOCATION

New Bedford MA

CUSTOMER CONTACT

SALESMAN / PM

Joe Nolasco

DESIGNER

Glenn Miller

DWG. DATE

6-30-21

REV. DATE / REVISION

SCALE

As Noted

FILE

2021/Starbucks/Locations/
New Bedford MA/21-56172/
SB New Bedford MA 21-56172

DESIGN SPECIFICATIONS ACCEPTED BY:

EST:	CLIENT:
------	---------

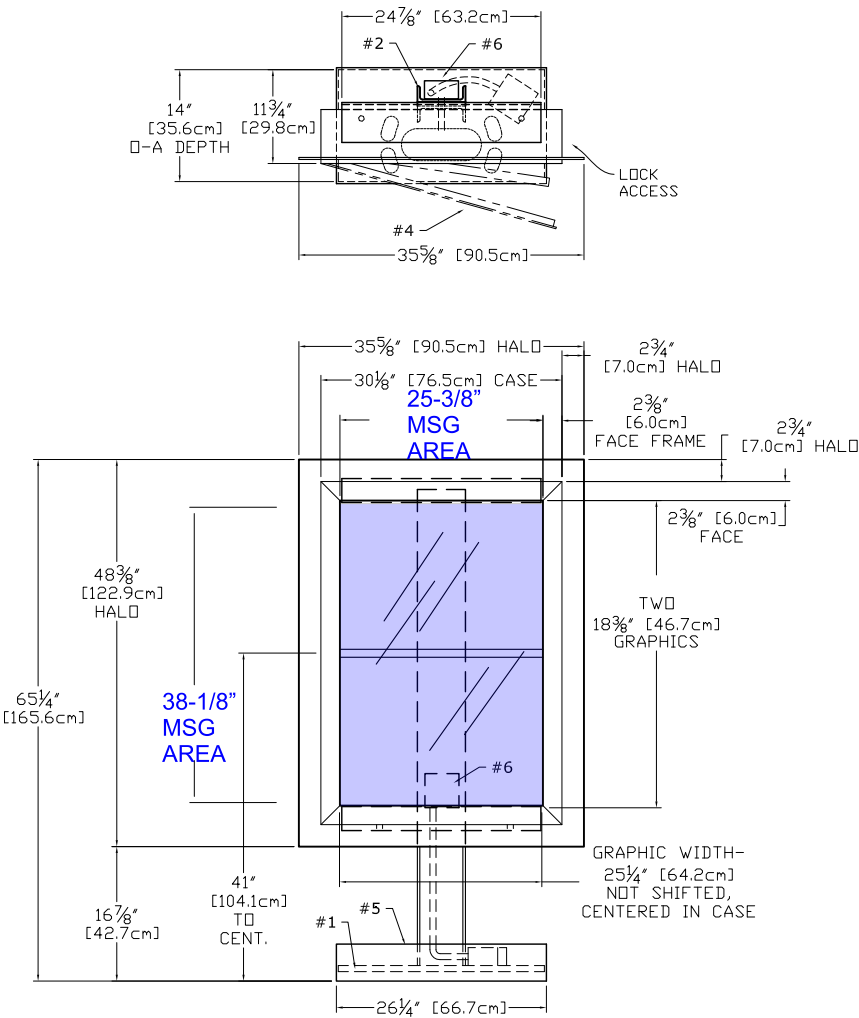
SLS/PM:	LANDLORD:
---------	-----------

THE INTENT OF THIS DRAWING IS TO SHOW A CONCEPTUAL REPRESENTATION OF THE PROPOSED SIGNAGE. DUE TO VARIATIONS IN PRINTING DEVICES AND SUBSTRATES, THE FINISHED PRODUCT MAY DIFFER SLIGHTLY FROM DRAWING.



PRE-MENU BOARD - FREESTANDING

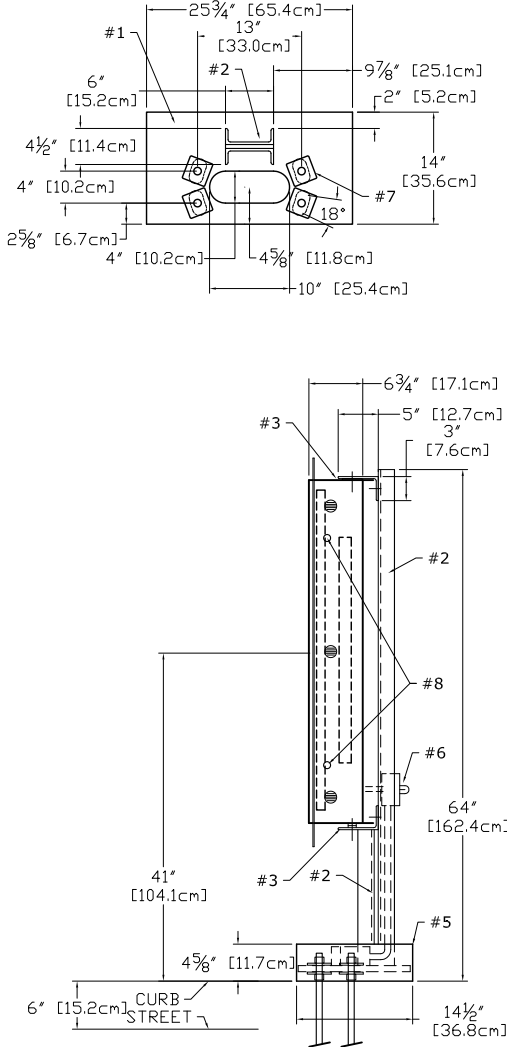
Qty. 2



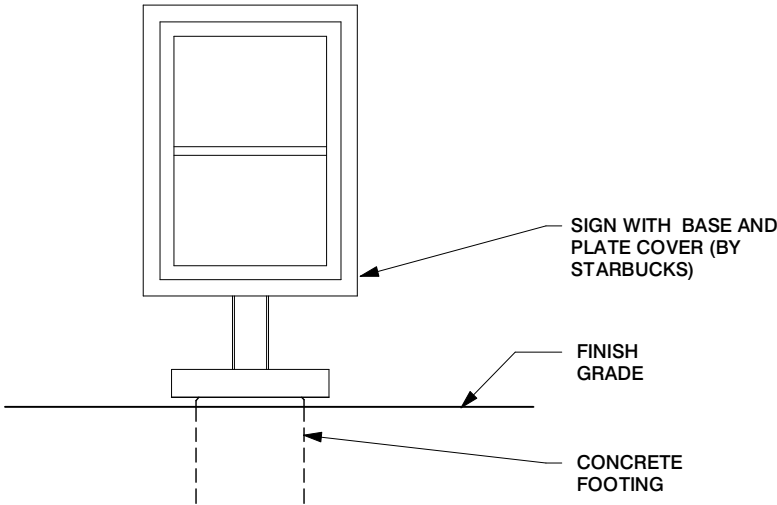
MESSAGE AREA = (25.375 * 38.125) / 144 = 6.72 SQ FT

DTE - PRE-MENU FREESTANDING

Scale: 1/2" = 1' (11x17 paper)



- #1 - 3/4" [19mm] STEEL BASE PLATE w/ 18deg HOLES PATTERN LEFT SQUARE / SYMETRICAL
- #2 - C6X10.5 (6"x2"x5/16") STEEL POST (1x)
- #3 - 5"x3"x1/4" STEEL SUPPORT ANGLES (2x) (WELDED TO STEEL POST)
- #4 - EXTRUDED ALUMINUM MENU BOARD (1x) ONE SPLIT PANEL LIGHTBOX TWO 25 1/4"x18 3/8" GRAPHICS GRAPHIC ASSEMBLY CENTERED, NOT SHIFTED STANDARD LED TUBE LIGHTING, SIDE LOCKS
- #5 - WELDED ALUMINUM BASE COVER
- #6 - WATER-TIGHT BOX w/SWITCHES & SENSOR, RIDGID CONDUIT RUN TO SECOND EXT BOX BELOW BASE COVER, 120 WATT, 0.30Aac
- #7 - 8 BASE WASHERS, 1/4" THICK
- #8 - TWO SIDE MOUNT LOCKS, RETAIN EXISTING KEY #E3-26-819-15



DTE - PRE-MENU FREESTANDING

Scale: 3/8" = 1' (11x17 paper)

QID 21-56172

JOB NAME

Starbucks

LOCATION

New Bedford MA

CUSTOMER CONTACT

SALESMAN / PM

Joe Nolasco

DESIGNER

Glenn Miller

DWG. DATE

6-30-21

REV. DATE / REVISION

SCALE

As Noted

FILE

**2021/Starbucks/Locations/
New Bedford MA/21-56172/
SB New Bedford MA 21-56172**

DESIGN SPECIFICATIONS ACCEPTED BY:

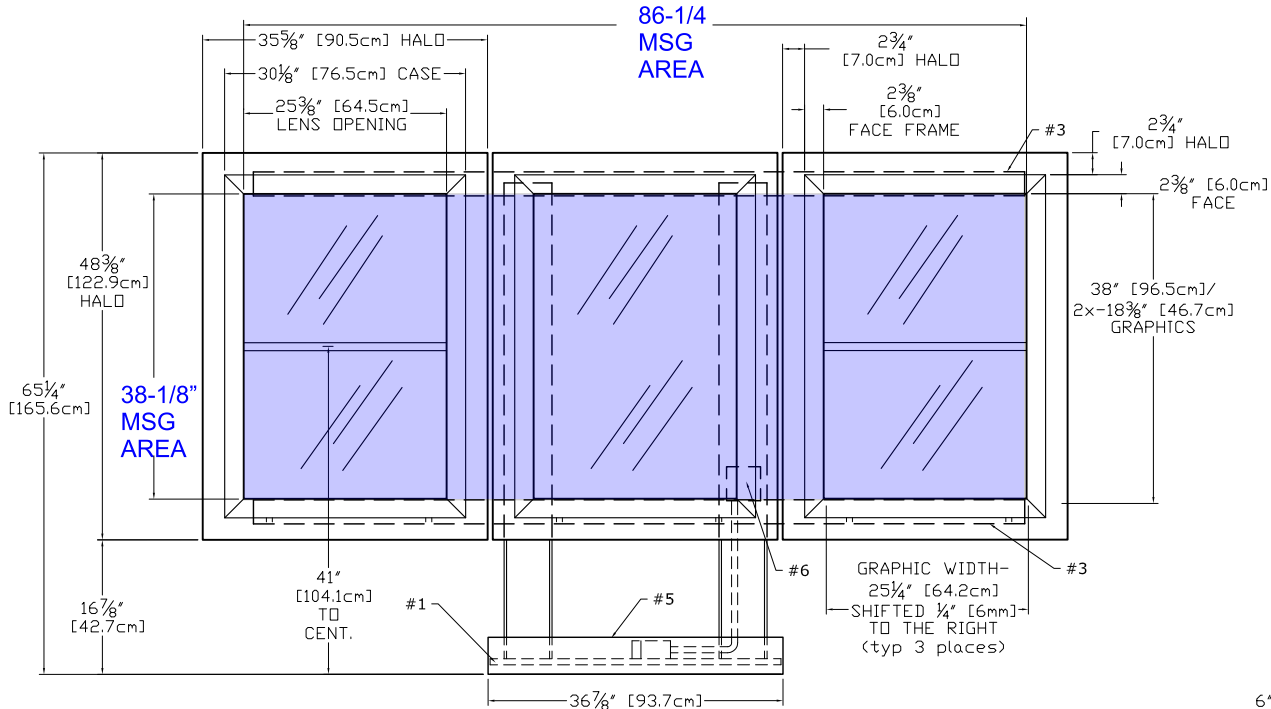
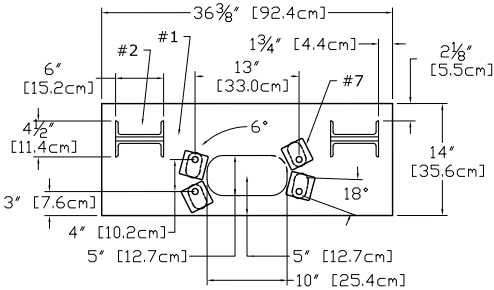
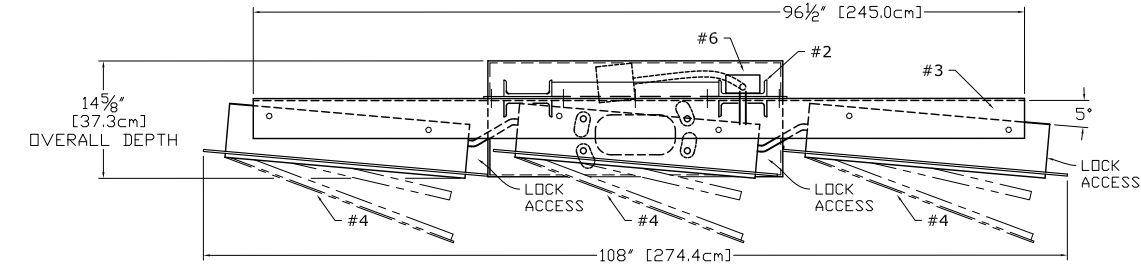
EST:	CLIENT:
SLS/PM:	LANDLORD:

THE INTENT OF THIS DRAWING IS TO SHOW A CONCEPTUAL REPRESENTATION OF THE PROPOSED SIGNAGE. DUE TO VARIATIONS IN PRINTING DEVICES AND SUBSTRATES, THE FINISHED PRODUCT MAY DIFFER SLIGHTLY FROM DRAWING.

5-PANEL MENU - FREESTANDING

Qty. 2

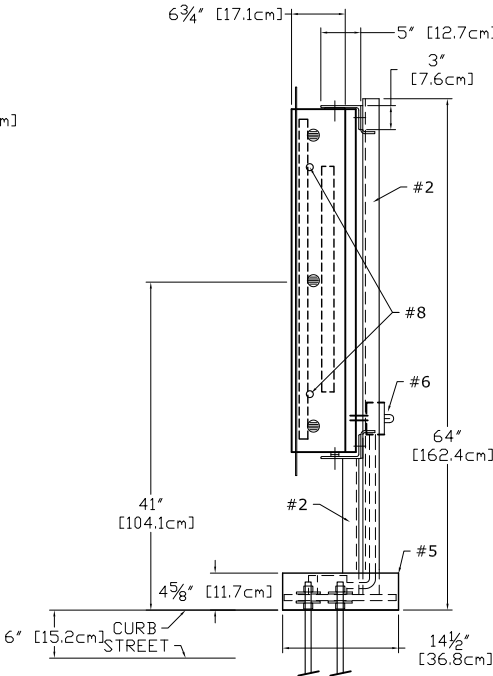
1



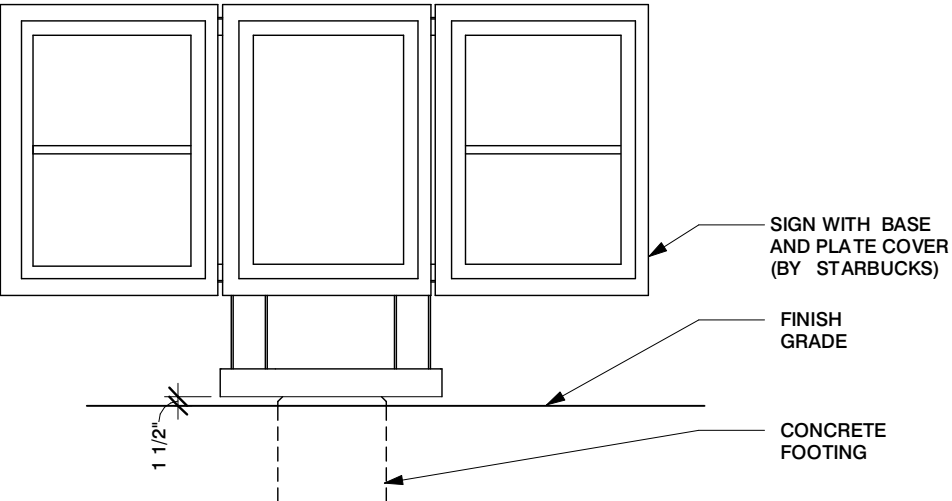
MESSAGE AREA = (86.25 * 38.125) / 144 = 22.9 SQ FT

DTE - MENU 5 PANEL FREESTANDING

Scale: 1/2" = 1' (11x17 paper)



- #1 - 3/4" [19mm] STEEL BASE PLATE w/ 18deg HOLES PATTERN ROTATED FOR 15deg THRU 3deg POSITION
- #2 - C6X10.5 (6"x2"x5/16") STEEL POST (2x)
- #3 - 5"x3"x1/4" STEEL SUPPORT ANGLES (2x) (BOLTED TO WELDED 1/4" STEEL CROSSBARS)
- #4 - EXTRUDED ALUMINUM MENU BOARDS (3x) ONE FULL AND TWO SPLIT PANEL LIGHTBOXES ONE - 25 1/4"x38" AND FOUR 25 1/4"x18 3/8" GRAPHICS ALL GRAPHIC ASSEMBLIES SHIFTED 1/4" TO RIGHT STANDARD LED TUBE LIGHTING, SIDE LOCKS
- #5 - WELDED ALUMINUM BASE COVER
- #6 - WATER-TIGHT BOX w/SWITCH & SENSOR, RIDGID CONDUIT RUN TO SECOND EXT BOX BELOW BASE COVER, 120 WATT, 0.90Aac
- #7 - 8 BASE WASHERS, 1/4" THICK
- #8 - TWO SIDE MOUNT LOCKS per MENUBOARD RETAIN EXISTING KEY #E3-26-819-15



DTE - MENU 5 PANEL FREESTANDING

Scale: 3/8" = 1' (11x17 paper)

HILTONDISPLAYS
125 HILLSIDE DRIVE • GREENVILLE SC 29607
P 800 353 9132 • F 864 242 2204
www.hiltondisplays.com

QID 21-56172

JOB NAME

Starbucks

LOCATION

New Bedford MA

CUSTOMER CONTACT

SALESMAN / PM

Joe Nolasco

DESIGNER

Glenn Miller

DWG. DATE

6-30-21

REV. DATE / REVISION

SCALE

As Noted

FILE

2021/Starbucks/Locations/
New Bedford MA/21-56172/
SB New Bedford MA 21-56172

DESIGN SPECIFICATIONS ACCEPTED BY:

EST:	CLIENT:
SLS/PM:	LANDLORD:

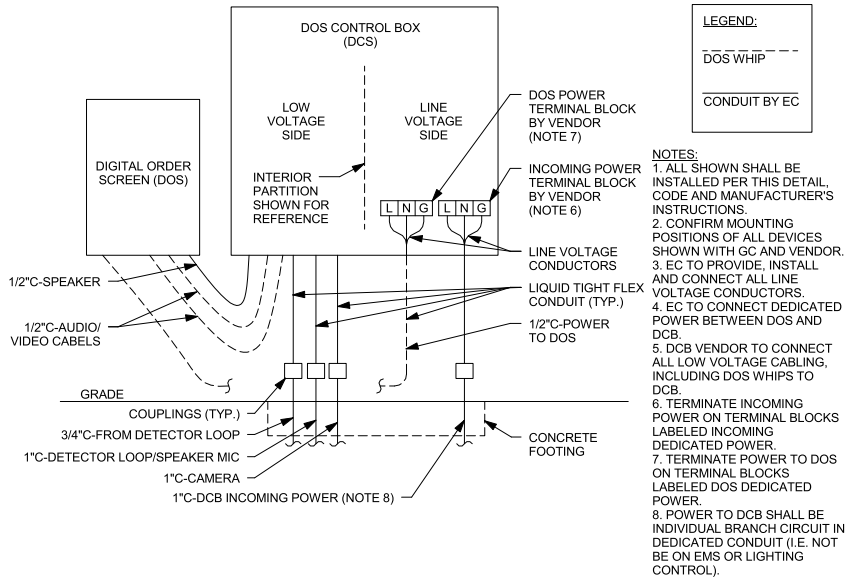
THE INTENT OF THIS DRAWING IS TO SHOW A CONCEPTUAL REPRESENTATION OF THE PROPOSED SIGNAGE. DUE TO VARIATIONS IN PRINTING DEVICES AND SUBSTRATES, THE FINISHED PRODUCT MAY DIFFER SLIGHTLY FROM DRAWING.



DOS ON CANOPY - DCB ON UNISTRUT

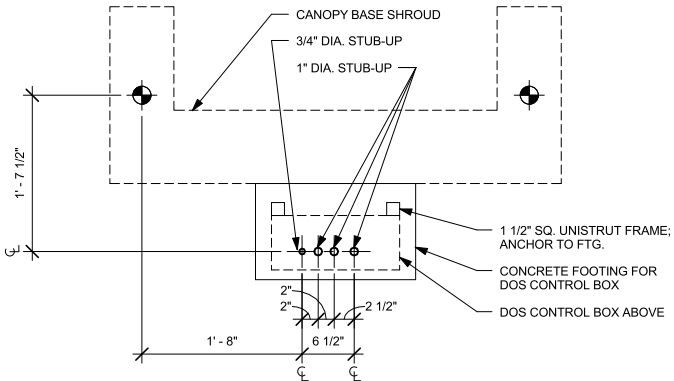
Qty. 2

J



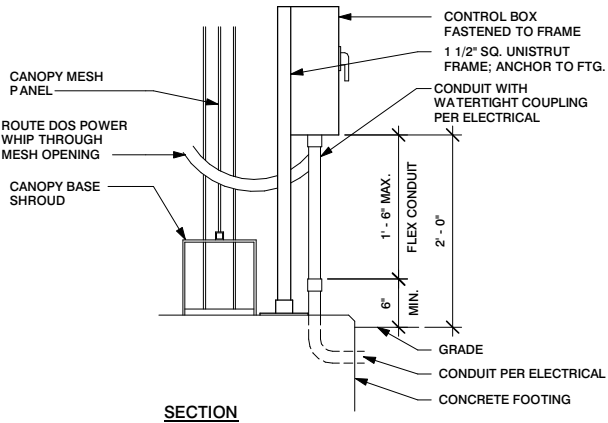
DTE - DOS CONTROL BOX WIRING

Scale: 1/2" = 1' (11x17 paper)



DTE - DOS CONTROL BOX CONDUIT STUB-UPS AT CANOPY

Scale: 1/2" = 1' (11x17 paper)

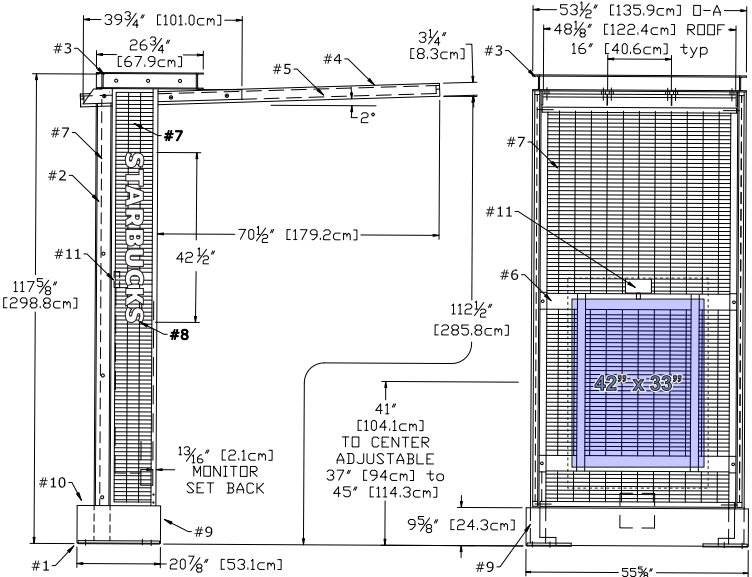
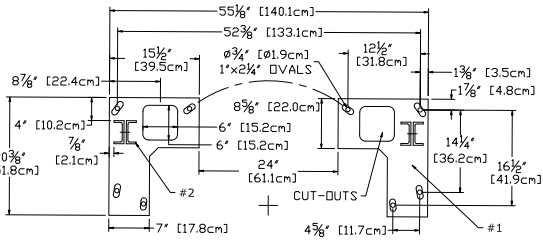
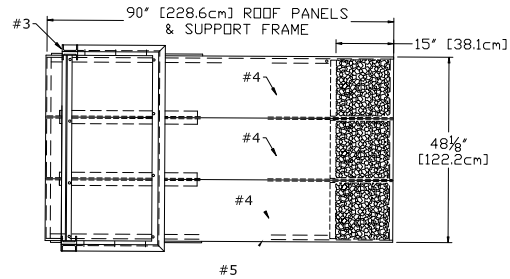
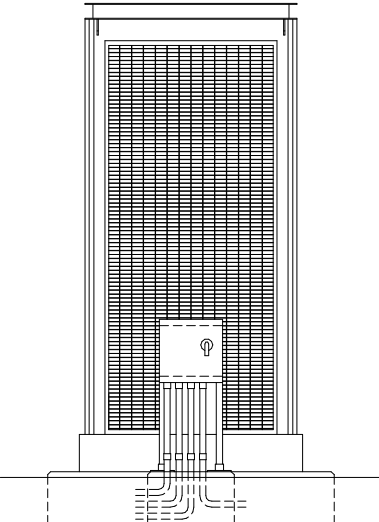


DTE - DOS CONTROL BOX AT CANOPY

Scale: 1/2" = 1' (11x17 paper)

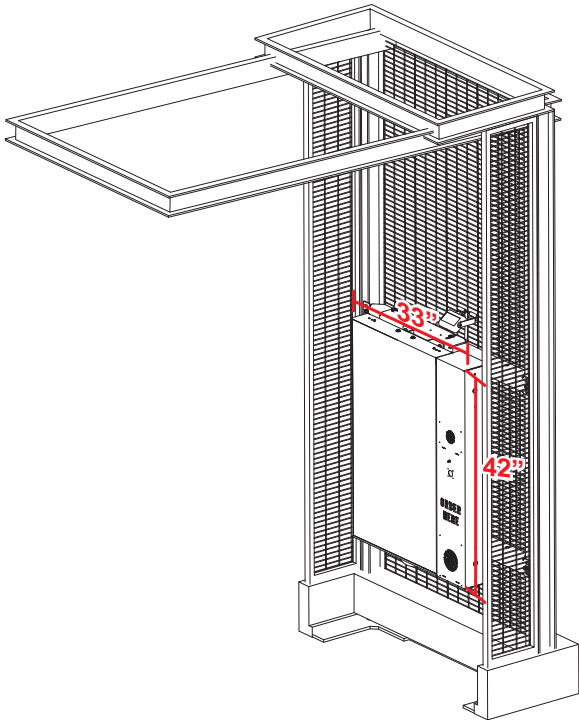


- #1 - TWO - 3/4" [19mm] STEEL BASE PLATES w/ OVAL HOLES FOR SWIVEL/POSITION
- #2 - TWO - BACK TO BACK C4X7.25 (4"x13 1/4"x5 1/16") STEEL POSTS
- #3 - WELDED ALUMINUM HEADER, C4"x1.58" CHANNEL
- #4 - THREE - ALUMINUM ROOF PANELS SEAMLESS RAISED SIDE EDGES 15" OF LASERED PATTERN W/ DRIP EDGE BEHIND
- #5 - WELDED STEEL PERIMETER ROOF FRAME
- #6 - WELDED 3/16" STEEL [5mm] MONITOR SUPPORT FRAME WITH HGT ADJUSTMENT
- #7 - WELDED STEEL 1" [25.4mm] O-C WIRE GRID BACK & SIDE PANELS IN WELDED RECTANGULAR STEEL TUBE FRAMES
- #8 - 4 7/16" X 1 1/2" [11.3cmX12.7mm] WHITE ACRYLIC LETTERS. FIXED TO LH GRID PANEL w/ANTI-TAMPER SCREWS
- #9 - WELDED ALUMINUM BASE COVERS
- #10 - WELDED ALUMINUM WATER-TIGHT ELECTRIC ENCLOSURE (REAR HATCH)
- #11 - LED CEILING FLOODLIGHT, WIRED COMPLETE



DTE - CANOPY

Scale: 1/4" = 1' (11x17 paper)



HILTONDISPLAYS

125 HILLSIDE DRIVE • GREENVILLE SC 29607
P 800 353 9132 • F 864 242 2204
www.hiltondisplays.com

QID 21-56172

JOB NAME

Starbucks

LOCATION

New Bedford MA

CUSTOMER CONTACT

SALESMAN / PM

Joe Nolasco

DESIGNER

Glenn Miller

DWG. DATE

6-30-21

REV. DATE / REVISION

SCALE

As Noted

FILE

2021/Starbucks/Locations/
New Bedford MA/21-56172/
SB New Bedford MA 21-56172

DESIGN SPECIFICATIONS ACCEPTED BY:

EST:	CLIENT:
SLS/PM:	LANDLORD:

THE INTENT OF THIS DRAWING IS TO SHOW A CONCEPTUAL REPRESENTATION OF THE PROPOSED SIGNAGE. DUE TO VARIATIONS IN PRINTING DEVICES AND SUBSTRATES, THE FINISHED PRODUCT MAY DIFFER SLIGHTLY FROM DRAWING.

