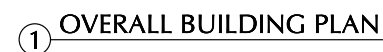
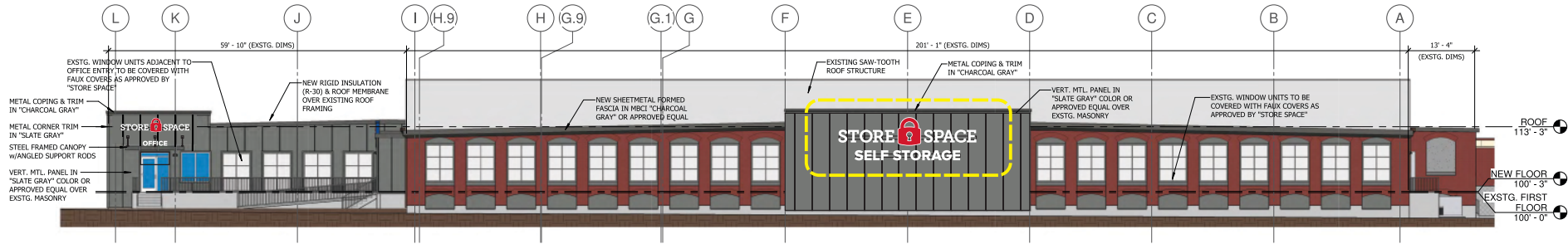


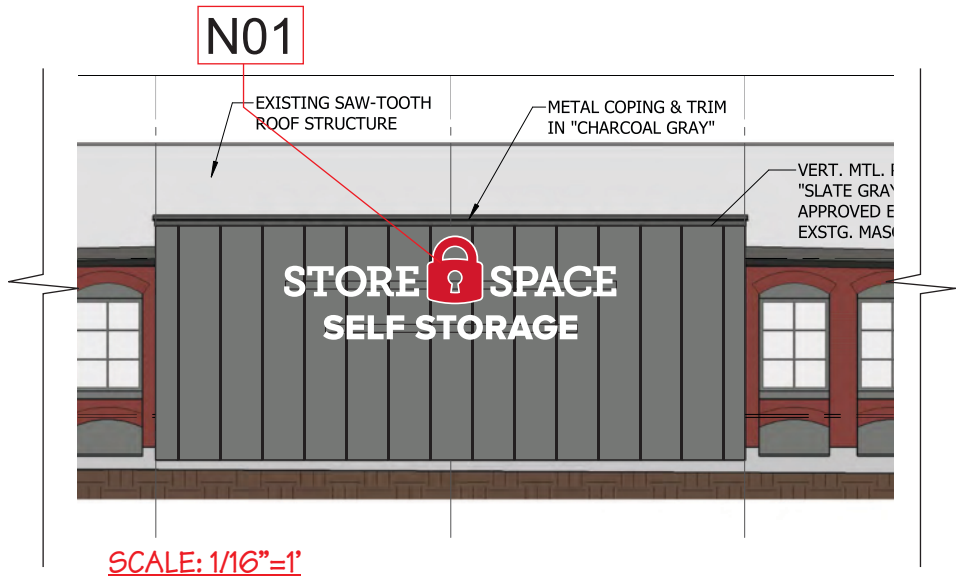
N05 - LOADING Non-Illum Letters



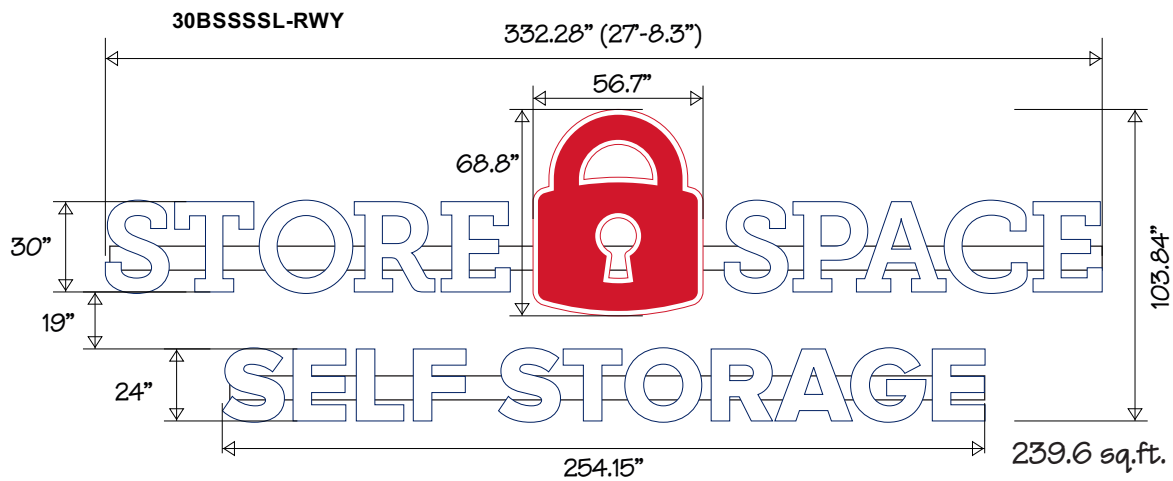
N01



③ SOUTH ELEVATION
SCALE: 1/32"=1'



SCALE: 1/16"=1'



SCALE: 3/16"=1'

COLORS:

- BLUE: 3M 3630-36 / MP 2075
- RED: 3M 3630-73 / MP 2172
- WHITE

GENERAL NOTES:

FRONT LIT CHANNEL LETTERS ON RACEWAY

- > 4" DEEP RETURNS - .040" ALUMINUM(WHITE)
- > .063" ALUMINUM BACKS
- > 3/16" WHITE ACRYLIC FACES
- > 1" TRIMCAP (WHITE - MATCH RETURN COLOR)
- > SLOAN WHITE LED_s
- > WEEPHOLES
- > MOUNTED TO EXISTING ALUMINUM RACEWAY
- > POWER SUPPLIES LOCATED IN RACEWAY

FRONT LIT LOGO(LOCK)

CHANNEL LETTER ON RACEWAY

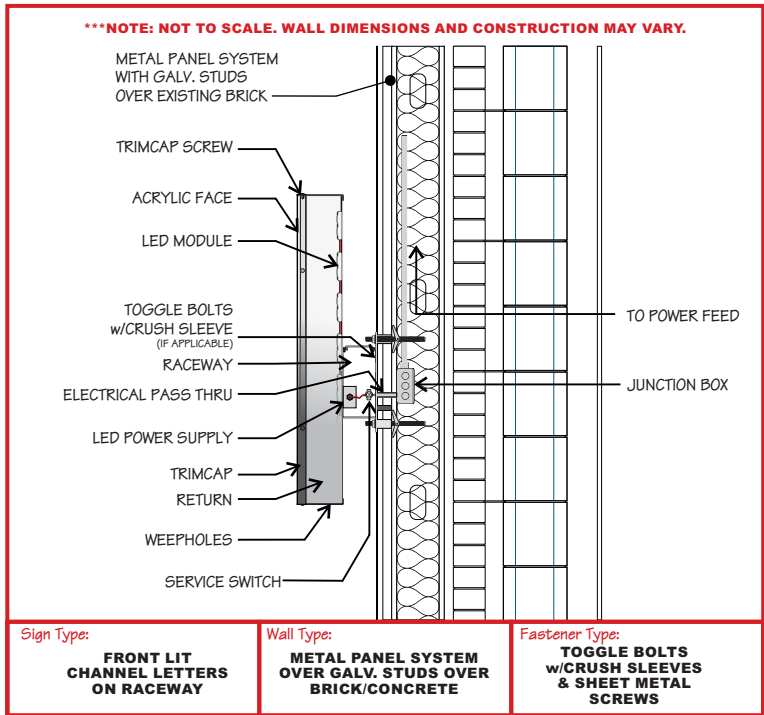
- > 4" DEEP RETURNS - .063" ALUMINUM (RED)
- > .125" ALUMINUM BACKS
- > 3/16" WHITE LEXAN FACE w/ RED VINYL
- > 1" TRIMCAP (MATCH RETURN COLOR)
- > SLOAN WHITE LED_s
- > WEEPHOLES
- > MOUNTED TO EXISTING ALUMINUM RACEWAY
- > POWER SUPPLIES LOCATED IN RACEWAYS

POWER REQUIREMENTS:

- * (1) 20 AMP-120 VOLT CIRCUIT

SIGN CALCULATIONS

- > PROPOSED: 239.6 sq.ft.



Sign Type:

FRONT LIT
CHANNEL LETTERS
ON RACEWAY

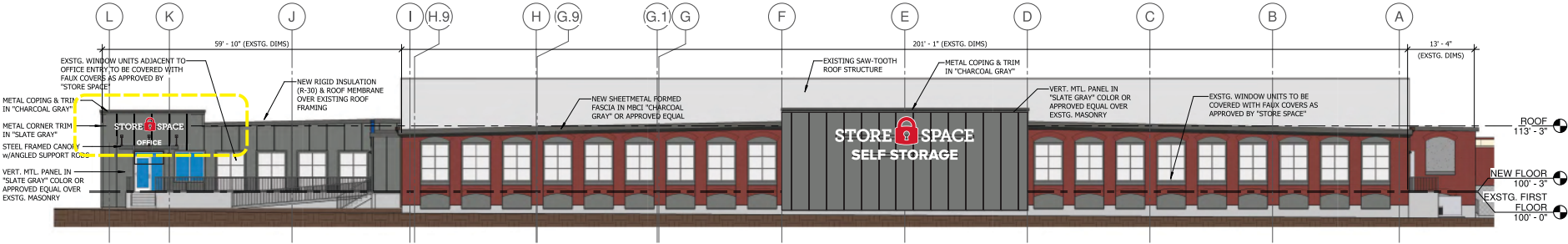
Wall Type:

METAL PANEL SYSTEM
OVER GALV. STUDS OVER
BRICK/CONCRETE

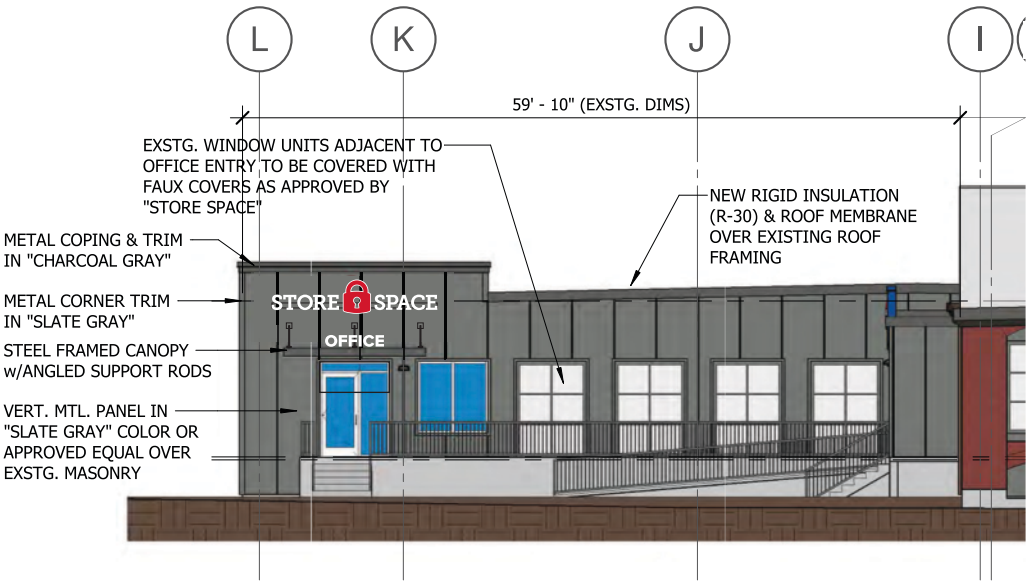
Fastener Type:

TOGGLE BOLTS
w/CRUSH SLEEVES
& SHEET METAL
SCREWS

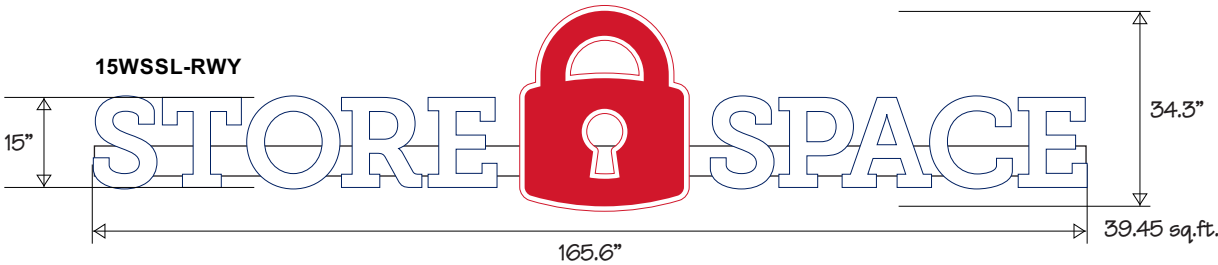
NO2A



3 SOUTH ELEVATION
SCALE: 1/32"=1'



3 SOUTH ELEVATION
SCALE: 1/16"=1'



COLORS:

- BLUE: 3M 3630-36 / MP 2075
- RED: 3M 3630-73 / MP 2172
- WHITE

GENERAL NOTES:

- FRONT LIT CHANNEL LETTERS ON RACEWAY
- > 3" DEEP RETURNS - .040" ALUMINUM(WHITE)
 - > .063" ALUMINUM BACKS
 - > 3/16" WHITE ACRYLIC FACES
 - > 1" TRIMCAP (WHITE - MATCH RETURN COLOR)
 - > SLOAN WHITE LED_s
 - > WEEPHOLES
 - > MOUNTED TO EXISTING ALUMINUM RACEWAY
 - > POWER SUPPLIES LOCATED IN RACEWAY

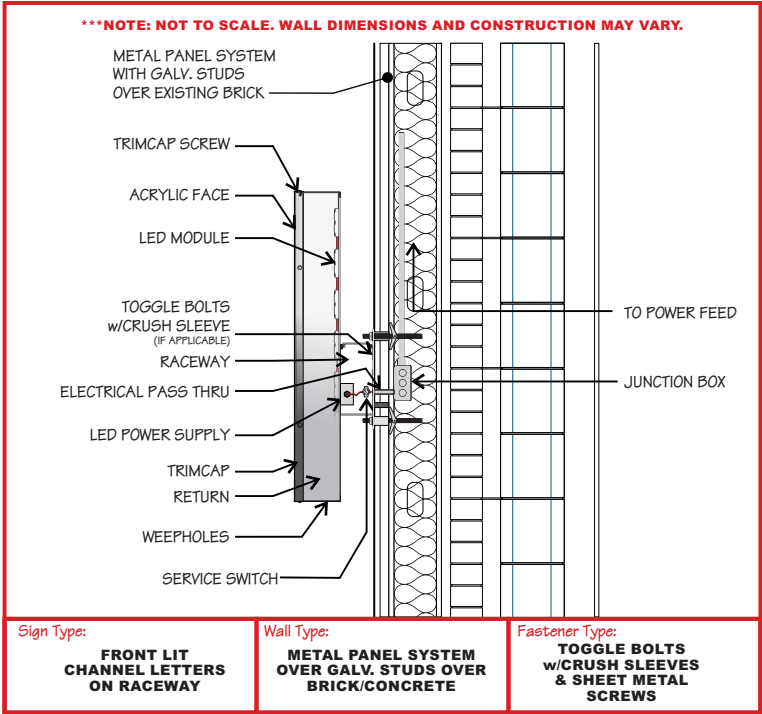
- FRONT LIT LOGO(LOCK)
CHANNEL LETTER ON RACEWAY
- > 3" DEEP RETURNS - .063" ALUMINUM (RED)
 - > .125" ALUMINUM BACKS
 - > 3/16" WHITE LEXAN FACE w/ RED VINYL
 - > 1" TRIMCAP (MATCH RETURN COLOR)
 - > SLOAN WHITE LED_s
 - > WEEPHOLES
 - > MOUNTED TO EXISTING ALUMINUM RACEWAY
 - > POWER SUPPLIES LOCATED IN RACEWAYS

POWER REQUIREMENTS:

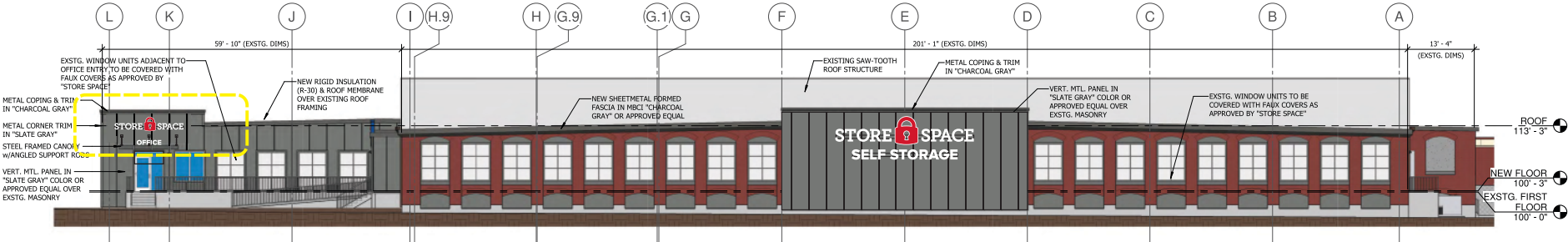
- * (1) 20 AMP-120 VOLT CIRCUIT

SIGN CALCULATIONS

- > PROPOSED: 39.45 sq.ft.

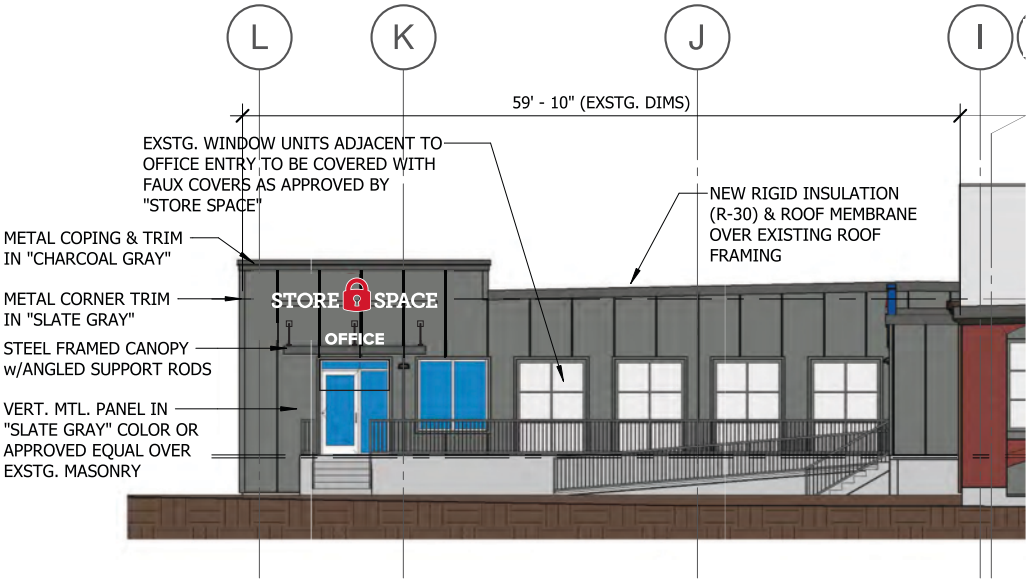


N02a

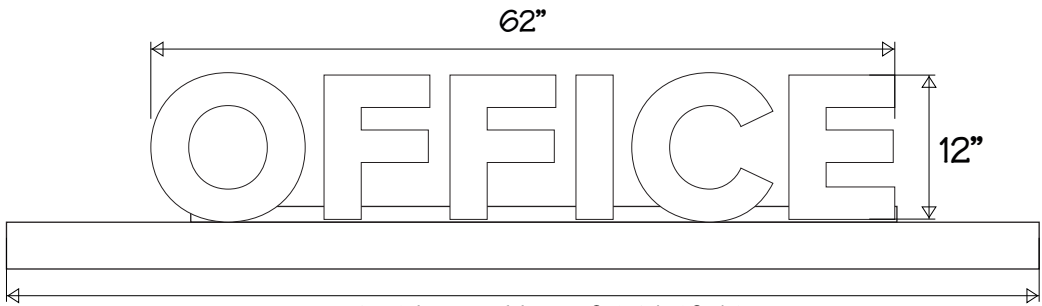


3 SOUTH ELEVATION

SCALE: 1/32"=1'

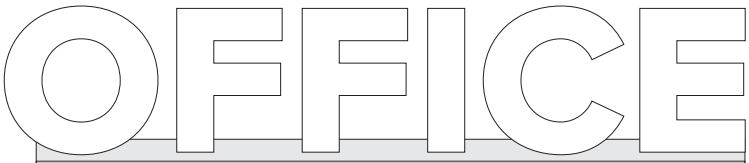


3 SOUTH ELEVATION

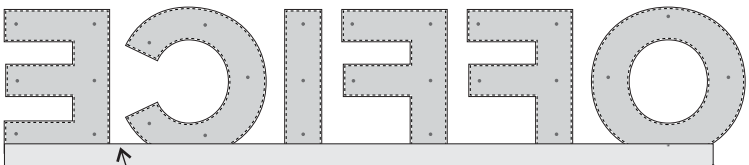


SCALE: 3/4"=1'

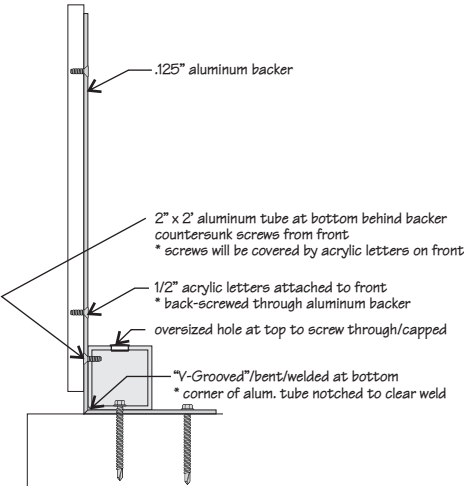
CENTER LETTERS ON CANOPY



1/2" acrylic letters attached to front
* back-screwed through aluminum backer
* letters cover screws from backer to tube



2" x 2" aluminum tube at bottom
behind backer/countersunk screws from front
* screws will be covered by acrylic letters on front



* ATTACHMENT TO CANOPY TBV
* CANOPY DETAILS TBD

COLORS

WHITE

POWER REQUIREMENTS:

* N/A - NON- ILLUMINATED

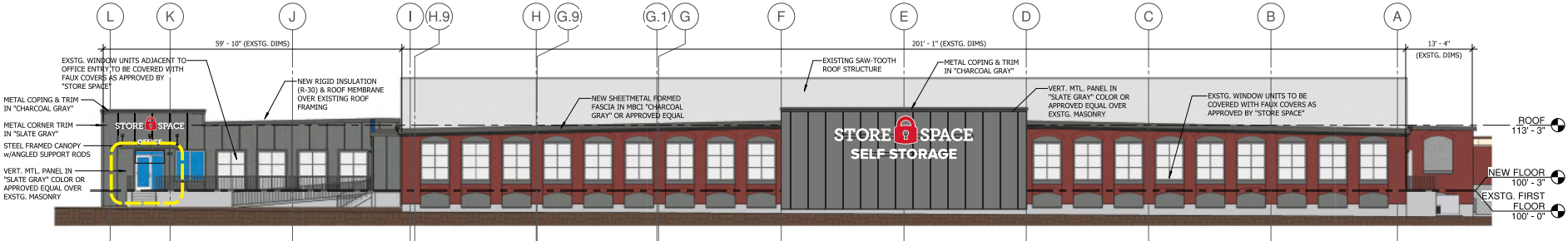
SIGN CALCULATIONS

> OFFICE: 5.17 sq. ft.

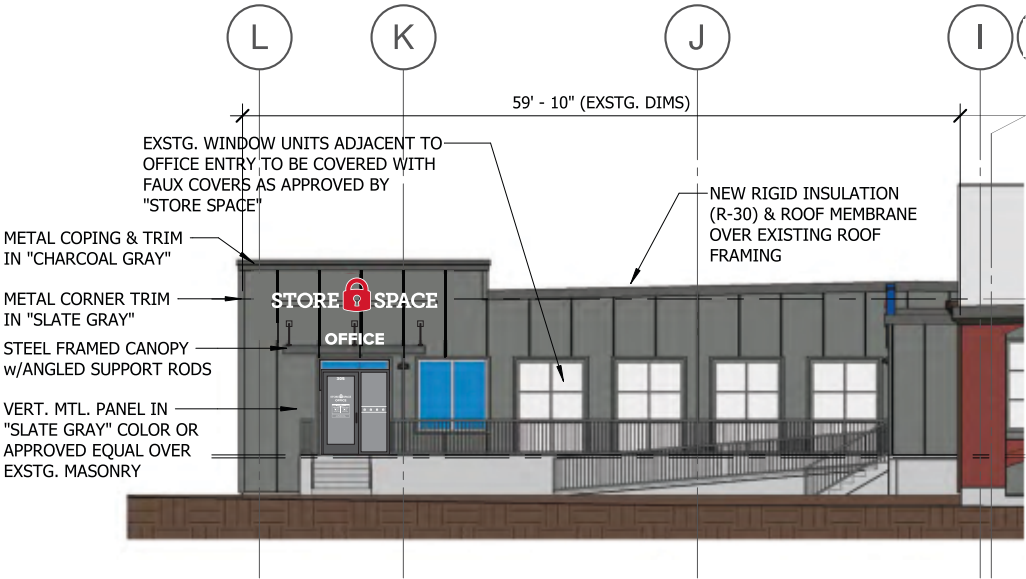
GENERAL NOTES

- > 1/2" ACRYLIC LETTERS
- > LETTERS MOUNTED TO ALUMINUM BACKER
 - * BACK SCREWED WITH COUNTERSUNK SCREWS
- > SIGNS INSTALLED ON TOP OF CANOPY
 - * CANOPY DETAILS TBD
- > NON-ILLUMINATED
- > ALUMINUM BACKER/FRAME/TUBE PAINTED TO MATCH COLOR OF WALL BEHIND IT
- > LETTERS PAINTED MATTE WHITE

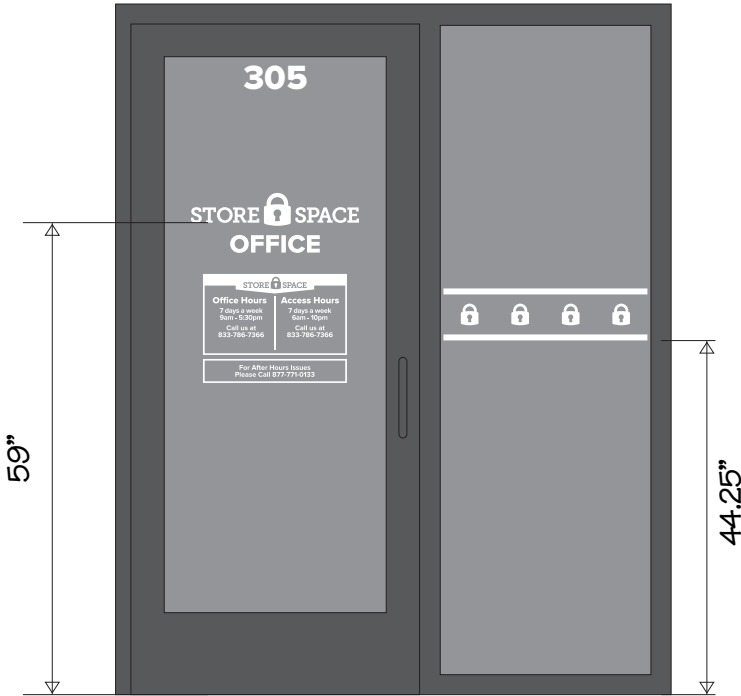
N02b



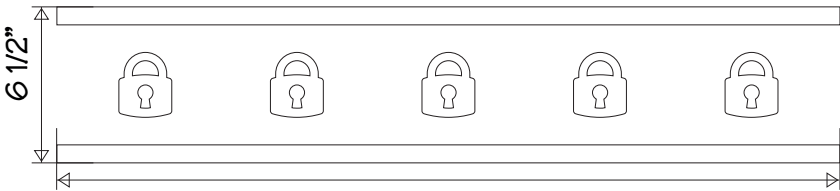
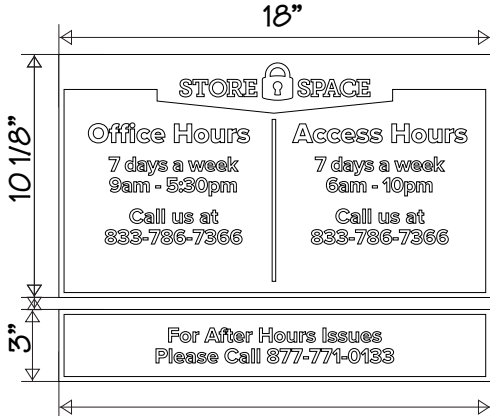
3 SOUTH ELEVATION
SCALE: 1/32"=1'



3 SOUTH ELEVATION
SCALE: 1/16"=1'

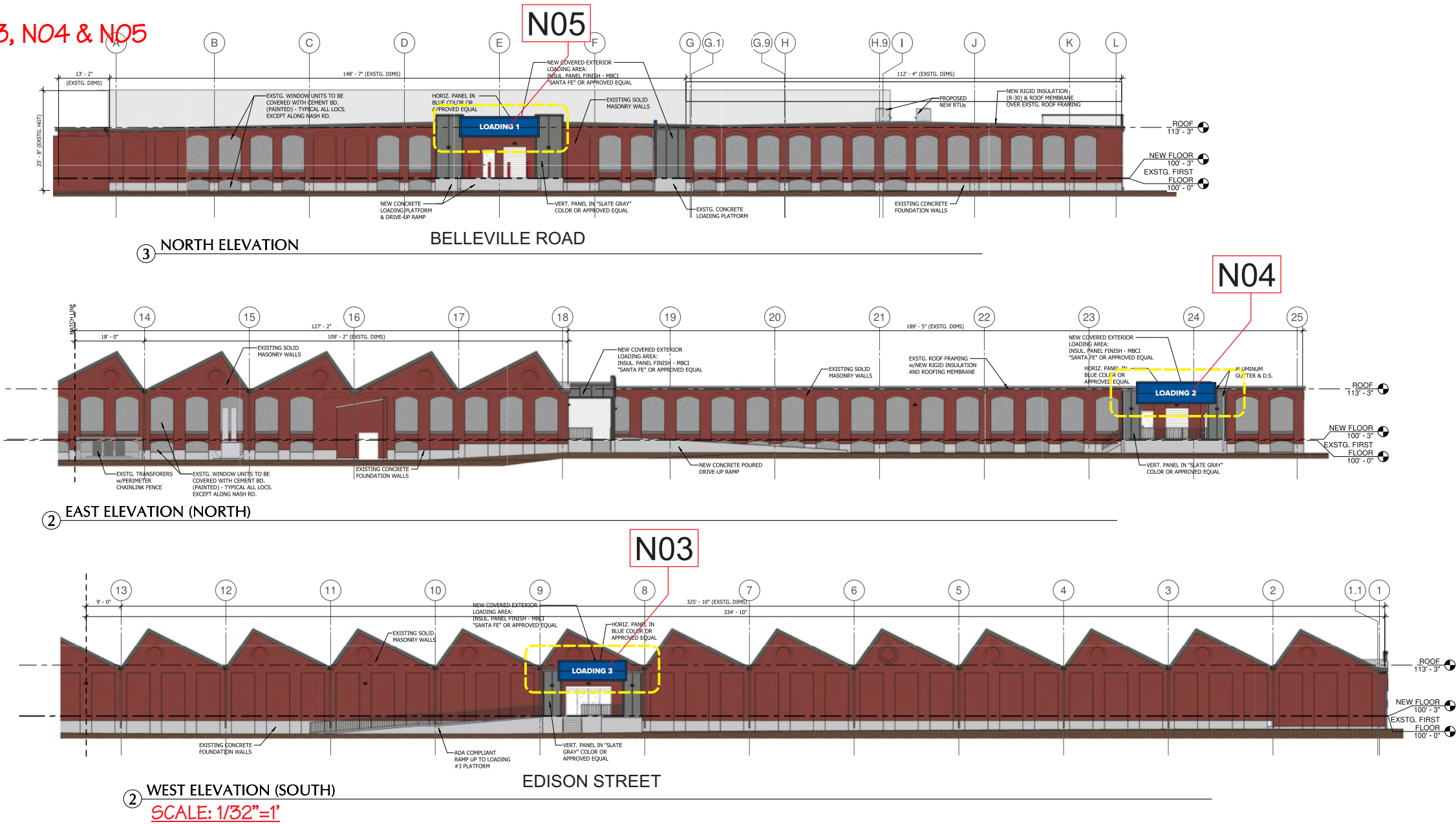


3" 305



SCALE: 1 1/2"=1'

N03, N04 & N05



COLORS:

WHITE

GENERAL NOTES

- > 1/2" ACRYLIC LETTERS
- > LETTERS MOUNTED TO WALL
- > MOUNTED w/ 2" 10-24 ALUMINUM STUDS
- > NON-ILLUMINATED SIGNAGE

* (3) SETS OF LETTERS

SIGN CALCULATIONS

* SIGN PROPOSED:

N05

LOADING 1

119.9"

16"

13.3 sq.ft.

SCALE: 1/2"=1'

N04

LOADING 2

124"

16"

13.7 sq.ft.

N03

LOADING 3

124.1"

16"

13.8 sq.ft.