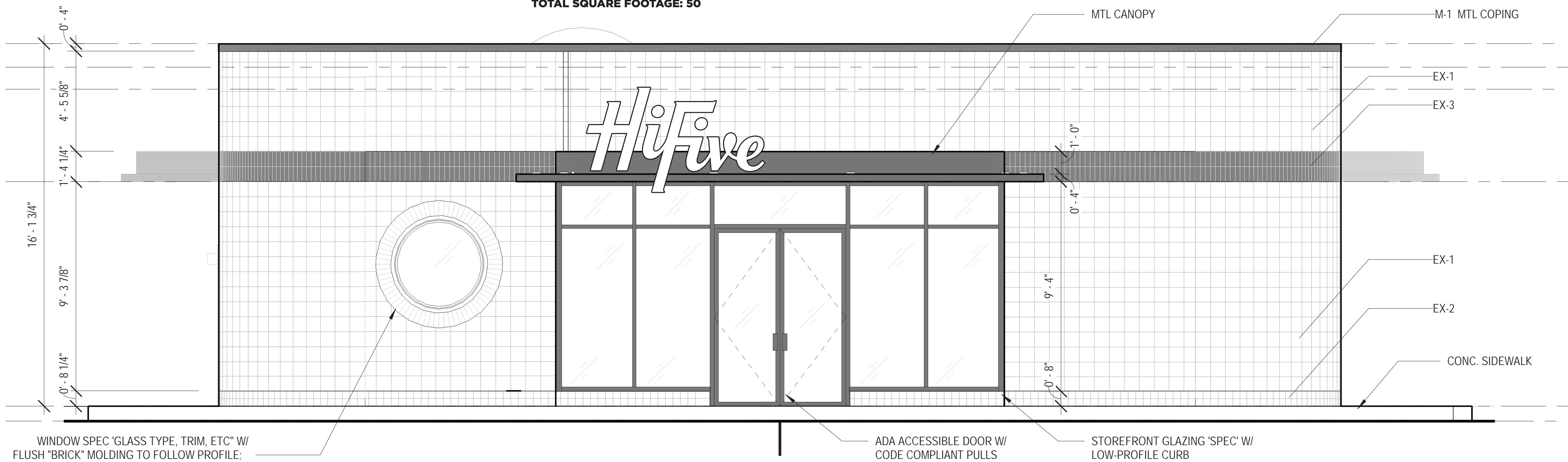
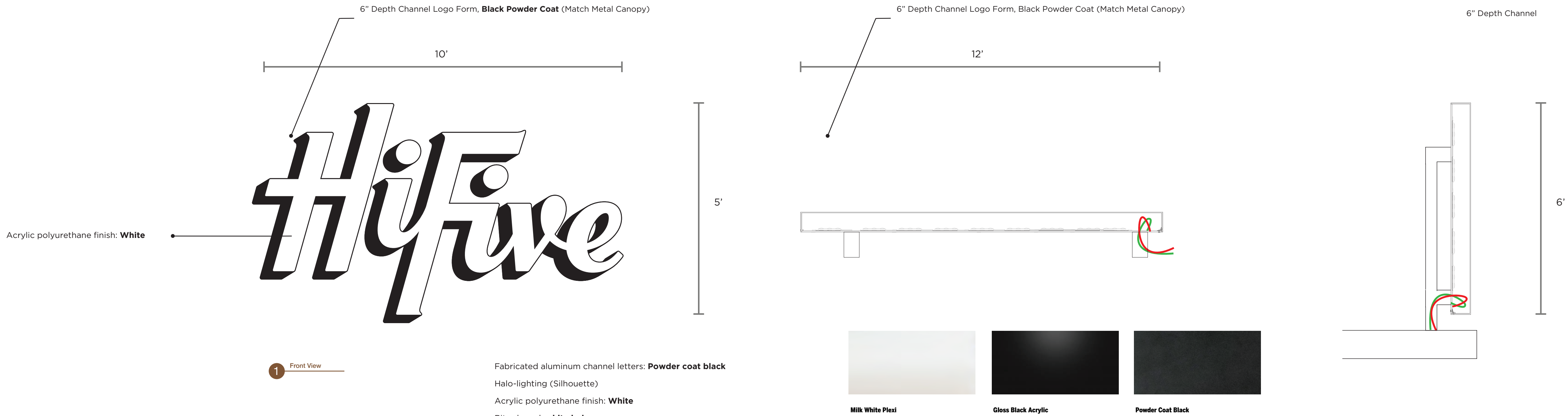




HiFive Dispensary Signage
366 Hathaway Road, New Bedford MA



1 OVERALL NORTH ELEVATION
1/4" = 1'-0"

SRPSIGN
CORPORATION

236 PEARL STREET
SOMERVILLE, MA 02145
(617) 623-6222

PROJECT: Hi Five Entrance Signage
ADDRESS: 366 Hathaway Rd, New Bedford MA

CLIENT: Beacon Compassion Inc. d/b/a HiFive

DRAWN BY: SRP DATE: 7/28/21

DESCRIPTION: Halo lit channel letters at entrance

FILE LOCATION: Clients/hi five/framingham/main id/shop 1.pdf

PROPRIETARY NOTICE:
THIS DRAWING SHEET AND CONTENTS
HEREIN ARE THE PROPERTY OF SRP
SIGN CORPORATION. USE OF THIS
DRAWING'S CONTENTS OR DESIGN
CONCEPTS FOR PURPOSES OTHER
THAN ESTIMATING, DRAWING
PREPARATION, AND/OR
MANUFACTURING FOR SRP SIGN
CORPORATION SHALL BE CAUSE FOR
LEGAL RECOURSE BY SRP SIGN
CORPORATION

DATE:	BY:	REVISION:	REV#:
//	//	//	//

2



EXISTING SIGN 1

Single Face, Illuminated/Light Box, Sign Cabinet
Fluorescent Task Light HON, Stack-On- Units
TO BE DEMOLISHED
4'H X 10'W, TOTAL SQUARE FOOTAGE: 40



EXISTING SIGN 2

Double Face, Illuminated/Light Box, Sign Cabinet
Internally illuminated Fluorescent Task Light
Welded bottom plates and footing and rebar
J bolt connected to footings.
TO BE DEMOLISHED
PYLON: APPROX 36'H, SIGN: 8'H X 10'W, TOTAL SQUARE FOOTAGE: 80

<div><div>SRPSIGN</div><div>CORPORATION</div><div>236 PEARL STREET</div><div>SOMERVILLE, MA 02145</div><div>(617) 623-6222</div></div>	PROJECT: Hi Five Entrance Signage		<div>PROPRIETARY NOTICE: THIS DRAWING SHEET AND CONTENTS HEREIN ARE THE PROPERTY OF SRP SIGN CORPORATION. USE OF THIS DRAWING'S CONTENTS OR DESIGN CONCEPTS FOR PURPOSES OTHER THAN ESTIMATING, DRAWING PREPARATION, AND/OR MANUFACTURING FOR SRP SIGN CORPORATION SHALL BE CAUSE FOR LEGAL RECOURSE BY SRP SIGN CORPORATION</div>		DATE:	BY:	REVISION:	REV#:	<div><div></div><div>4</div></div>
	ADDRESS: 366 Hathaway Rd, New Bedford MA				//	//	//	//	
	CLIENT: Beacon Compassion Inc. d/b/a HiFive								
	DRAWN BY: SRP	DATE: 7/28/21							
	DESCRIPTION: Halo lit channel letters ar entrance								
	FILE LOCATION: Clients/hi five/framingham/main id/shop 1.pdf								