



EAST ELEVATION

NORTH ELEVATION

WEST ELEVATION

GENERAL NOTES:

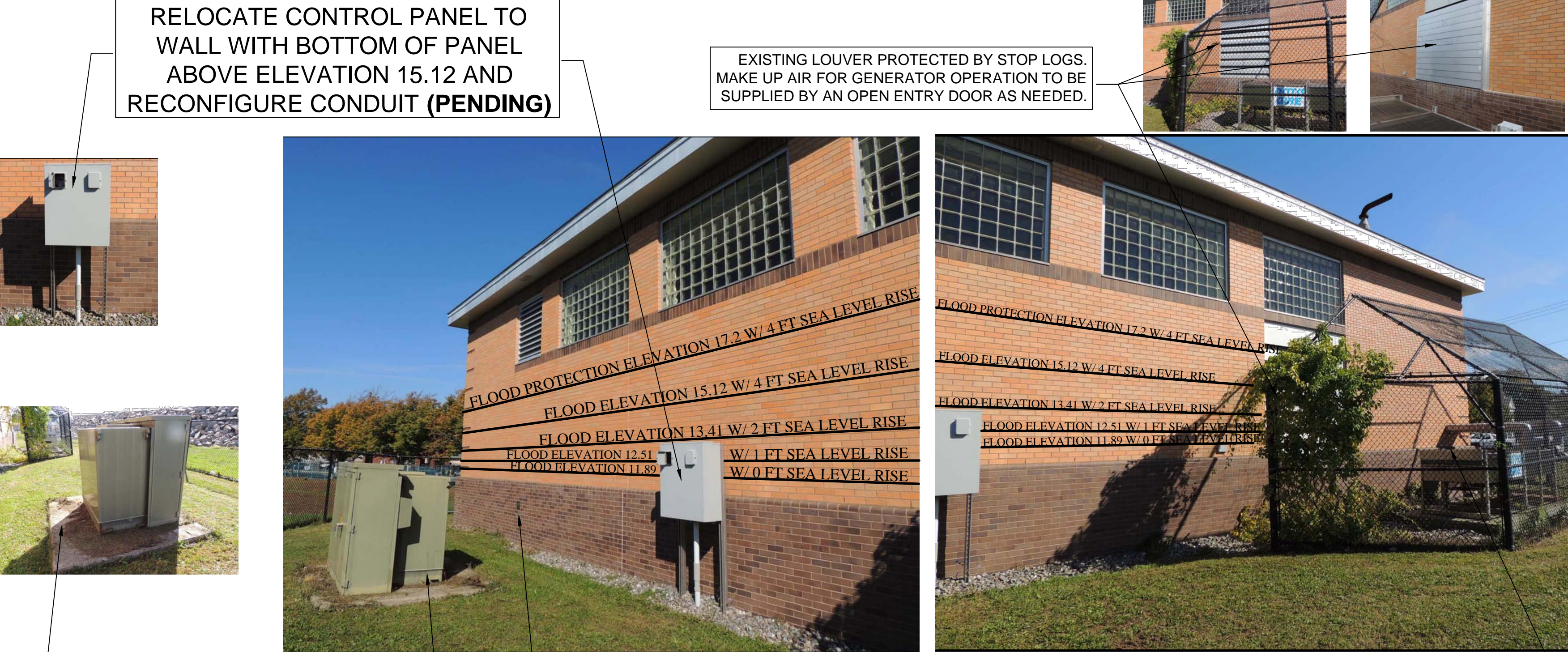
1. FLOOD PROTECTION ELEVATIONS:  
Inundation w/ 0' Sea Level Rise ELEVATION 11.89  
Inundation w/ 1' Sea Level Rise ELEVATION 12.51  
Inundation w/ 2' Sea Level Rise ELEVATION 13.41  
Inundation w/ 4' Sea Level Rise ELEVATION 15.12

FLOOD PROTECTION LEVEL:

1. THE ESTIMATED STANDING STILL WATER FLOOD PROTECTION LEVEL ASSOCIATED WITH THE WORK COMPLETED TO DATE FOR THE PUMP STATION DRY WELL FACILITY IS TO AT LEAST THE TOP OF THE STOP LOG RAILS AT BUILDING ENTRIES AND LOUVER SET AT APPROXIMATE ELEVATION 17.2 WHICH EXCEEDS THE EXPECTED MAXIMUM FLOOD LEVEL OF 15.12.
2. THE ESTIMATED STANDING WATER FLOOD PROTECTION LEVEL ASSOCIATED WITH THE WORK COMPLETED TO DATE FOR THE PUMP STATION WET WELL FACILITY IS UNCHANGED WITH THE WET WELL OPEN TO FLOOD WATERS DUE TO THE CONNECTION TO THE FLOOD WATERS THROUGH THE COLLECTION SYSTEM WITH THE EXCEPTION THAT THE INFLUENT CHANNEL CAN BE CUT OFF BY CLOSING THE INLET SLUICE GATE.
3. NONE OF THE FLOOD-PROOFING MEASURES TO DATE ARE COMPLETELY WATERTIGHT NOR EXPECTED TO HANDLE SURGING CURRENTS OR DEBRIS COLLISION WITH THE BUILDING NOTING THAT THE PUMP STATION BUILDING IS A COMBINATION REINFORCED CONCRETE AND CONCRETE BLOCK AND MASONRY STRUCTURE.

AS-BUILT

SEPTEMBER 16, 2016



SOUTH ELEVATION



GENERATOR COOLING SYSTEM

1	9/16/16	CONVERT DRAWING TO AS-BUILT	DJF
NO.	DATE	DESCRIPTION	BY
CITY OF NEW BEDFORD DEPARTMENT OF PUBLIC INFRASTRUCTURE			
Cove Road Pump Station Map 20 Lot 376 1095 Cove Road, New Bedford MA 02745			
DESIGNED BY : DJF		SCALE: NTS	
CHECKED BY :		DATE : March 31_16	
		SHEET 3	